

DOWN THE  
SANTA FÉ  
TRAIL  
&  
INTO MEXICO



MAGOFFIN

F786

M22





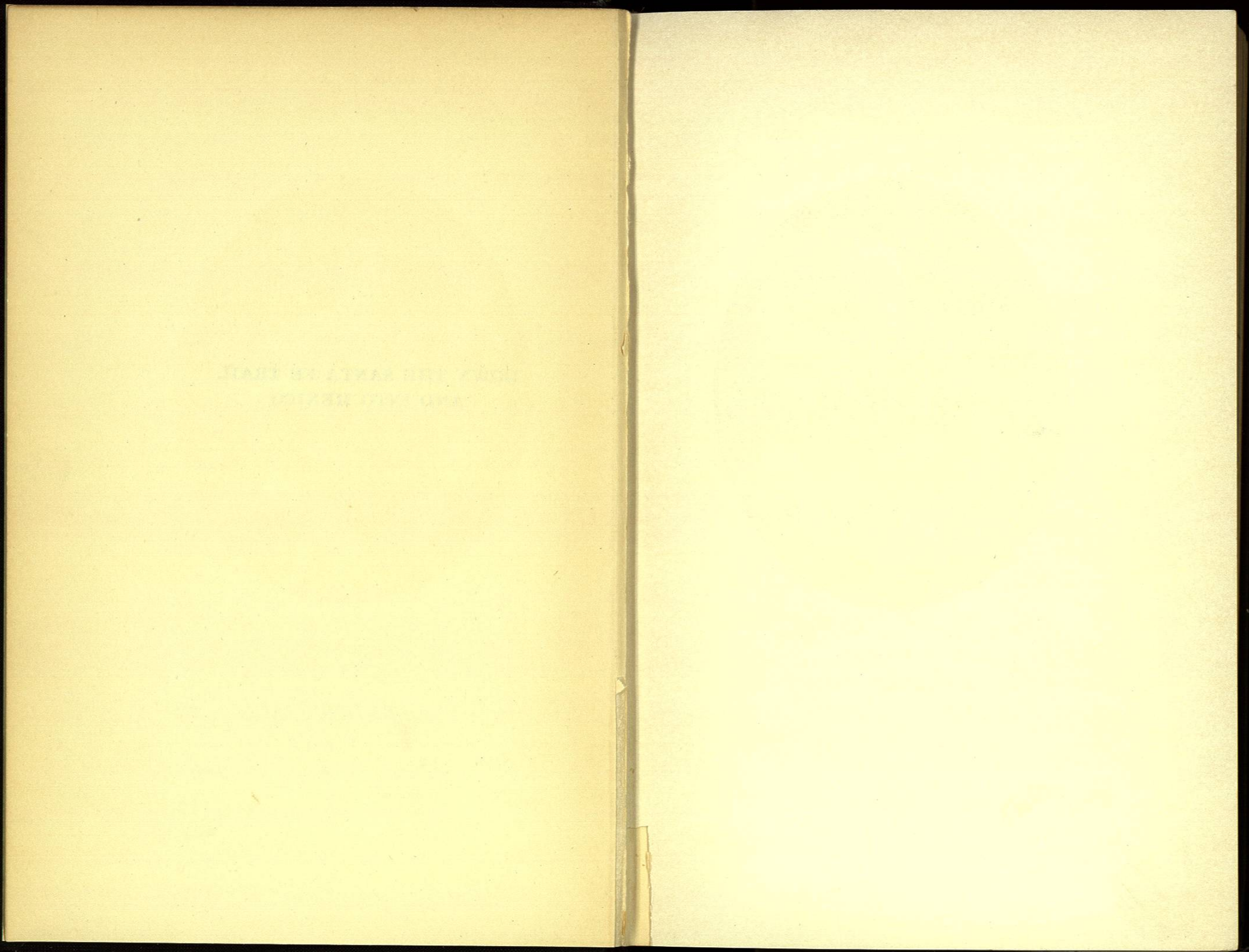
1020000885

*Santa Fe*  
*July 12, 1933.*



107826

INTERNATIONAL BOOKFINDERS INC.  
You name it - we find it  
Box 1, Pacific Palisades, Cal. 90272 USA





SUSAN SHELBY MAGOFFIN, IN 1845  
*From a daguerreotype.*

DOWN THE SANTA FÉ  
TRAIL  
AND INTO MEXICO

*The Diary of  
Susan Shelby Magoffin  
1846-1847*

EDITED BY  
STELLA M. DRUMM  
*Librarian, Missouri Historical Society*



NEW HAVEN  
YALE UNIVERSITY PRESS

LONDON • HUMPHREY MILFORD • OXFORD UNIVERSITY PRESS

MDCCCXXVI