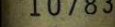
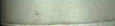
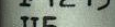
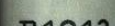


MEXICAN WAR

1846



MEXICAN

WAR

1846

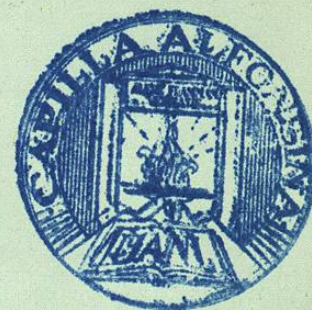
F1213

U5

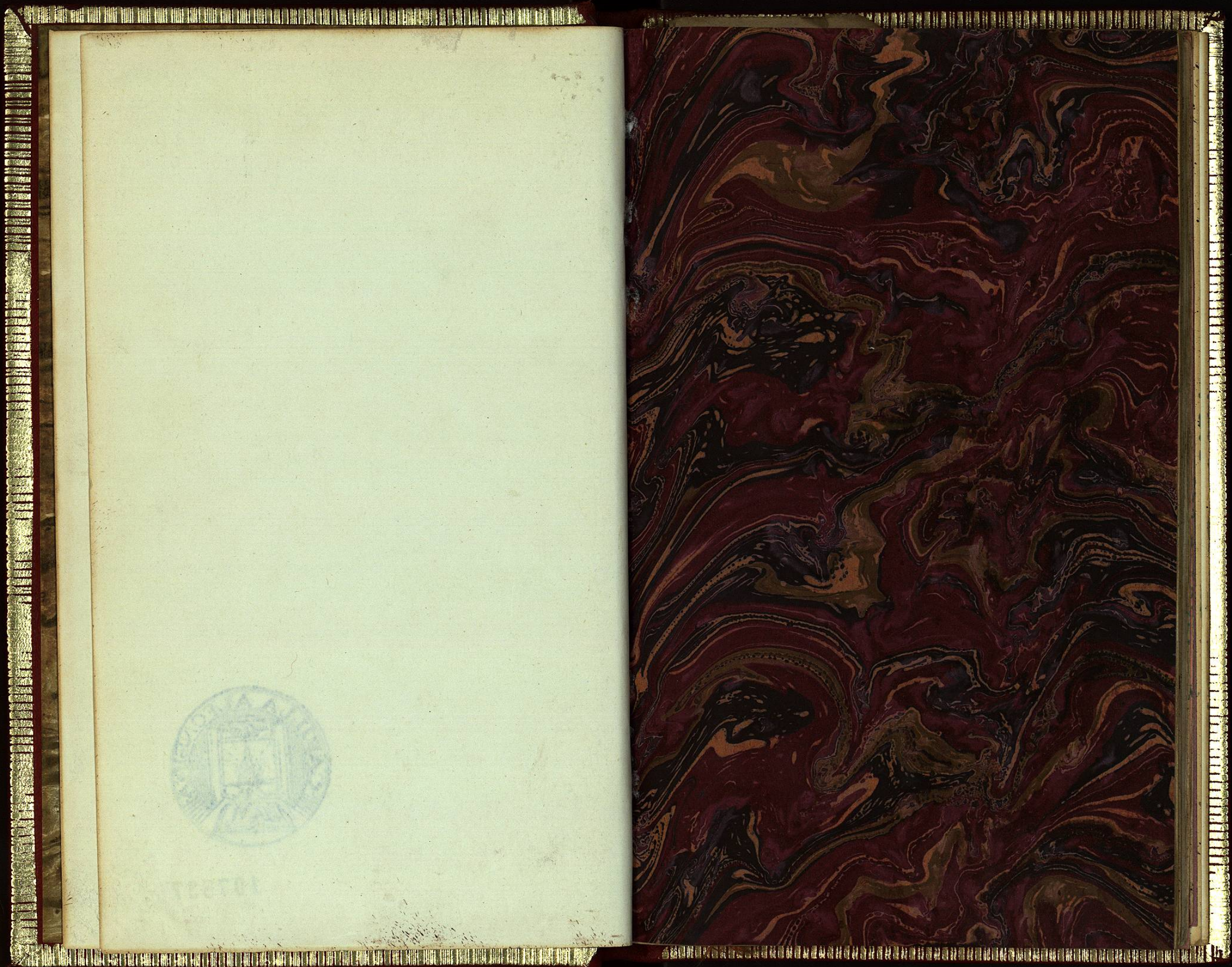
107837



1020001196



107837



F1213
US



FONDO
FERNANDO DIAZ RAMIREZ

31st CONGRESS,
1st Session.

[SENATE.]

Ex. Doc.
No. 32.

REPORT
OF
THE SECRETARY OF WAR,

COMMUNICATING,

In compliance with a resolution of the Senate, a map showing the operations of the army of the United States in Texas and the adjacent Mexican states on the Rio Grande; accompanied by astronomical observations, and descriptive and military memoirs of the country.

MARCH 1, 1849.

Read.

FEBRUARY 18, 1850.

Ordered to be printed, and that 250 additional copies be printed for the use of the Topographical Bureau.

WAR DEPARTMENT,
Washington, February 28, 1849.

SIR: I have the honor to submit herewith a report, with accompanying papers and maps, from the colonel of the corps of topographical engineers, prepared in pursuance of a resolution of the Senate of the 8th of August last, requiring the Secretary of War to furnish to Congress "a general map from the reconnaissance and surveys of the topographical engineers, showing the operations of the army of the United States in Texas and the adjacent Mexican states on the Rio Grande; to be accompanied with the astronomical observations, and descriptive and military memoirs of the country traversed by the troops of the United States."

Very respectfully, your obedient servant,

W. L. MARCY, *Secretary of War.*

Hon. GEO. M. DALLAS,
President of the Senate.

BUREAU OF TOPOGRAPHICAL ENGINEERS,
Washington, February 28, 1849.

SIR: I have the honor to submit the report and maps of Major George W. Hughes, of the corps of topographical engineers, being a compliance in part with a resolution of the Senate of the 8th August, 1848. The general map required by that resolution is not yet completed.

Respectfully, sir, your obedient servant,

J. J. ABERT, *Col. Corps Top. Eng'rs.*

Hon. W. L. MARCY, *Secretary of War.*

MEMOIR

DESCRIPTIVE OF THE MARCH OF

A DIVISION OF THE UNITED STATES ARMY,

UNDER THE COMMAND OF

BRIGADIER GENERAL JOHN E. WOOL,

FROM

SAN ANTONIO DE BEXAR, IN TEXAS, TO SALTILLO, IN MEXICO.

By GEORGE W. HUGHES,

CAPTAIN CORPS TOPOGRAPHICAL ENGINEERS, CHIEF OF THE TOPOGRAPHICAL STAFF.

1846.