

THE  
WORKS  
OF

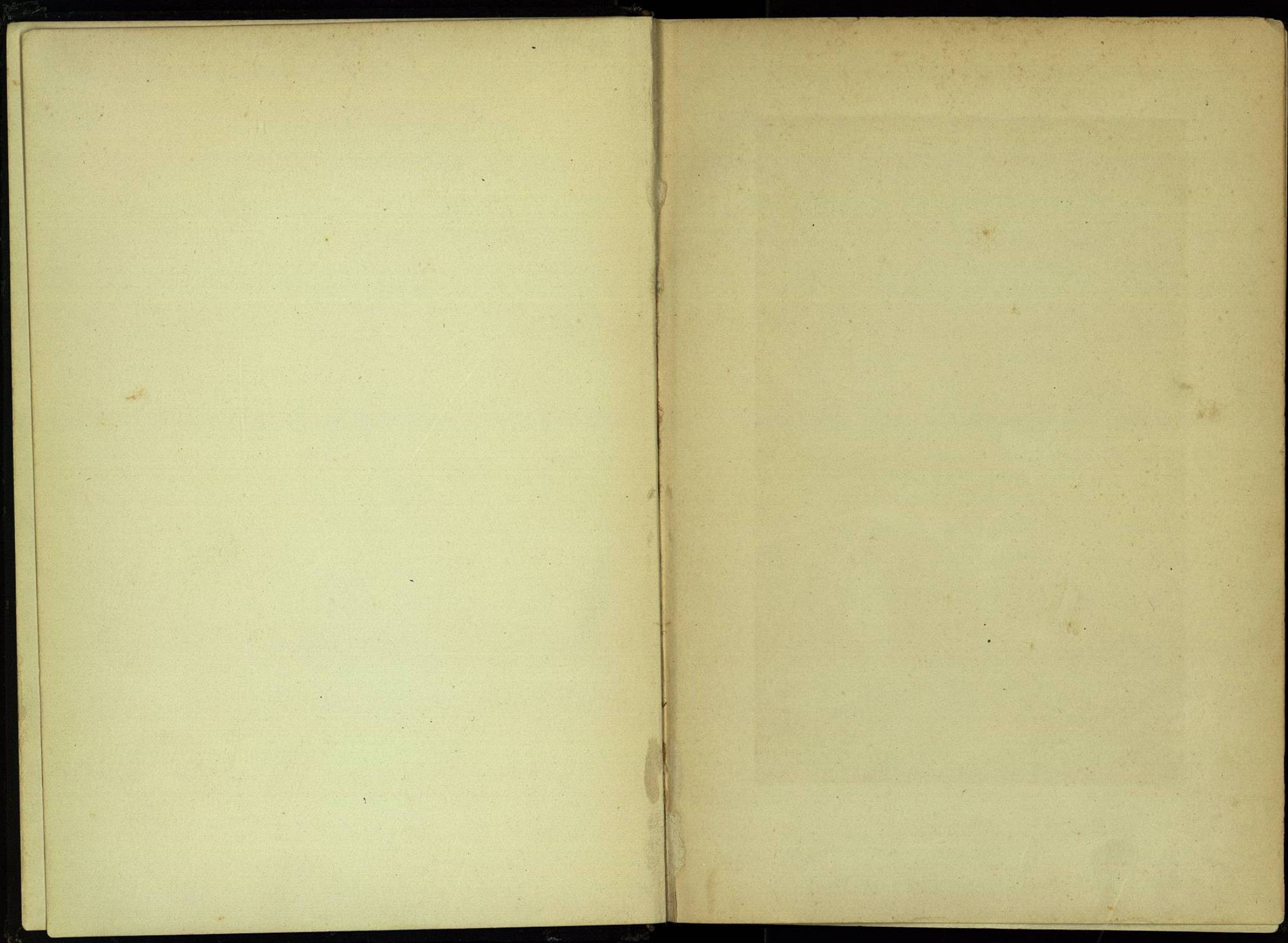
EDGAR  
ALLAN  
POE

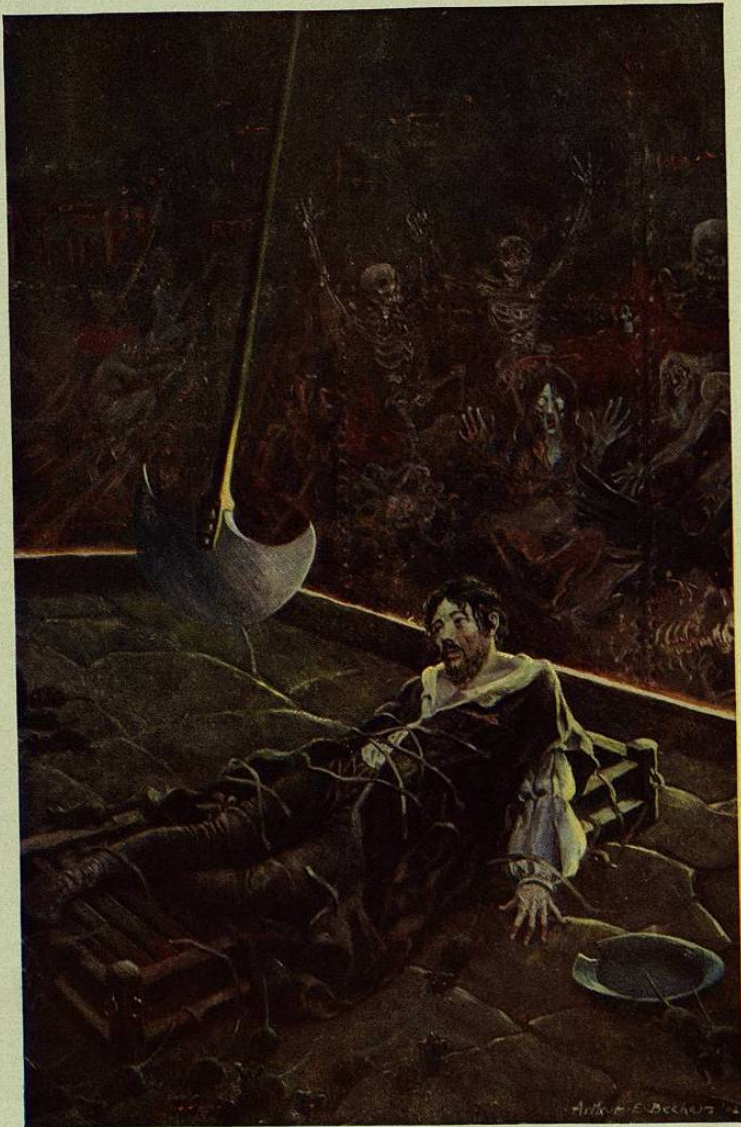
PS2600  
E50  
v.2



1020023838

*Gertrude Curran*





Raven Edition

THE WORKS OF

EDGAR ALLAN POE

Vol. II. P. 229

Vol. II. P. 229

1844

The Raven Edition

THE WORKS OF  
EDGAR ALLAN POE

IN FIVE VOLUMES

FRONTISPIECE IN COLOR FROM PAINTING  
By ARTHUR E. BECHER

VOLUME TWO



NEW YORK  
P. F. COLLIER & SON  
MCMIII

13558

*The Pit and the Pendulum*

*"The moment of escape had arrived."*

Vol. II, p. 253

820  
P



BIBLIOTECA

COPYRIGHT 1903  
By P. F. COLLIER & SON



ACERVO DE LITERATURA

128488

3004A

THE WORKS OF  
EDGAR ALLAN POE

PS 2600

E 50

v. 2

## CONTENTS

---

|   |     |
|---|-----|
| THE PURLOINED LETTER . . . . .                              | 5   |
| THE THOUSAND-AND-SECOND TALE OF SCHEHE-<br>RAZADE . . . . . | 35  |
| A DESCENT INTO THE MAELSTROM . . . . .                      | 64  |
| VON KEMPELEN AND HIS DISCOVERY . . . . .                    | 90  |
| MESMERIC REVELATION . . . . .                               | 101 |
| THE FACTS IN THE CASE OF M. VALDEMAR . . . . .              | 116 |
| THE BLACK CAT . . . . .                                     | 130 |
| THE FALL OF THE HOUSE OF USHER . . . . .                    | 145 |
| SILENCE—A FABLE . . . . .                                   | 173 |
| THE MASQUE OF THE RED DEATH . . . . .                       | 178 |
| THE CASK OF AMONTILLADO . . . . .                           | 188 |
| THE IMP OF THE PERVERSE . . . . .                           | 198 |
| THE ISLAND OF THE FAY . . . . .                             | 208 |
| THE ASSIGNATION . . . . .                                   | 216 |
| THE PIT AND THE PENDULUM . . . . .                          | 234 |
| THE PREMATURE BURIAL . . . . .                              | 257 |
| THE DOMAIN OF ARNHEIM . . . . .                             | 279 |
| LANDOR'S COTTAGE . . . . .                                  | 302 |
| WILLIAM WILSON . . . . .                                    | 321 |
| THE TELL-TALE HEART . . . . .                               | 352 |
| BERENICE . . . . .  | 360 |
| ELEONORA . . . . .  | 373 |