



A HISTORY  
OF  
FRANCE

—  
DURUY

II

*ILLUSTRATED*

DC39

D93

1896

v. 2

TYCROVE & CO  
NEW YORK

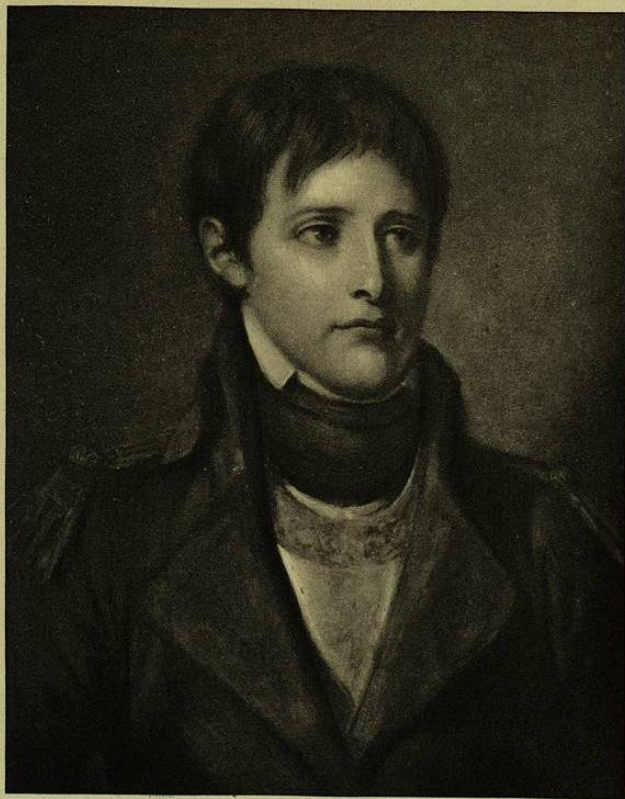




1020043450







A  
**HISTORY OF FRANCE**

BY  
**VICTOR DURUY**

MEMBER OF THE FRENCH ACADEMY

*ABRIDGED AND TRANSLATED FROM THE  
SEVENTEENTH FRENCH EDITION*

BY **MRS. M. CAREY**

WITH AN INTRODUCTORY NOTICE AND A CONTINUATION  
TO THE YEAR 1896

BY **J. FRANKLIN JAMESON, Ph.D.**

PROFESSOR OF HISTORY IN BROWN UNIVERSITY

VOLUME II

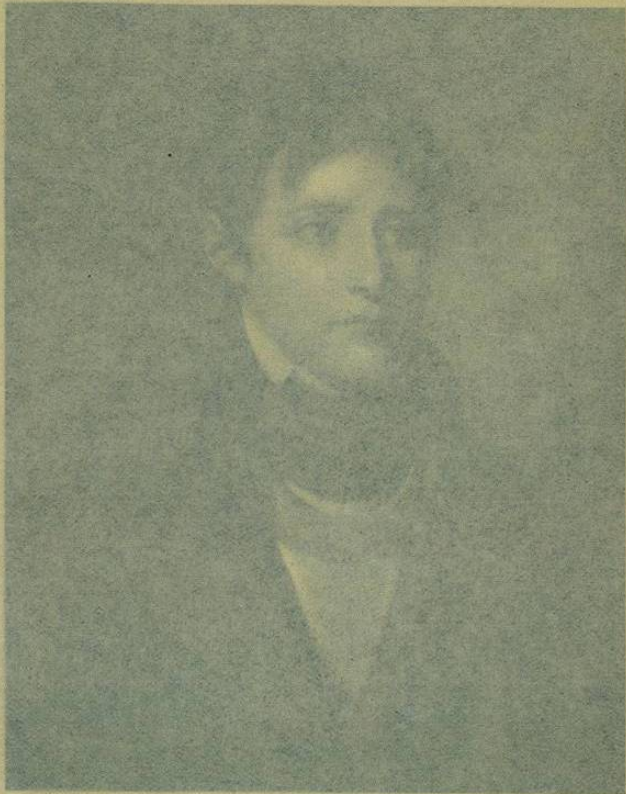
NEW YORK: 49 East 16th Street

**THOMAS Y. CROWELL & COMPANY**

BOSTON: 100 PURCHASE STREET

13500





A

# HISTORY OF FRANCE

BY

VICTOR DURUY

MEMBER OF THE FRENCH ACADEMY

*ABRIDGED AND TRANSLATED FROM THE  
SEVENTEENTH FRENCH EDITION*

By MRS. M. CAREY

WITH AN INTRODUCTORY NOTICE AND A CONTINUATION  
TO THE YEAR 1896

By J. FRANKLIN JAMESON, Ph.D.

PROFESSOR OF HISTORY IN BROWN UNIVERSITY

VOLUME II

NEW YORK: 46 EAST 14TH STREET

**THOMAS Y. CROWELL & COMPANY**

BOSTON: 100 PURCHASE STREET

13500





BIBLIOTECA

934.03

9

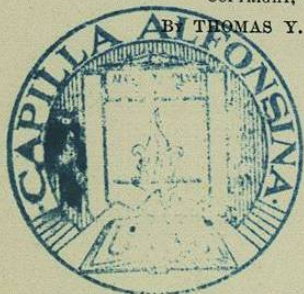
DC39

D93

1896

v. 2

COPYRIGHT, 1889 AND 1896,  
BY THOMAS Y. CROWELL & CO.



ACERVO GENERAL

129543

TYPOGRAPHY BY J. S. CUSHING & Co., NORWOOD, MASS.  
PRESSWORK BY THE WRIGHT & POTTER PRINTING Co., BOSTON.

## LIST OF ILLUSTRATIONS.

### VOLUME II.

	PAGE
PORTRAIT OF NAPOLEON (from a painting by Greuze), <i>Frontispiece</i>	
CARDINAL RICHELIEU (from a painting by Champaigne in the Louvre) . . . . .	402
MAZARIN (from a print in the National Library) . . . . .	404
LOUIS XIV. IN HIS YOUTH (from the statuette of Chapu) . . . . .	417
TURENNE (from a print in the National Library) . . . . .	435
THE DUKE OF VENDÔME (from a print in the National Library) . . . . .	454
MOLIÈRE (Mignard) . . . . .	472
MADAME DE POMPADOUR (C. Cochin) . . . . .	505
MONTESQUIEU (Saint-Aubin) . . . . .	519
MARIE ANTOINETTE (from a painting by Madame Vigée Le- brun in the Palace at Versailles) . . . . .	531
TAKING OF THE BASTILE (Prieur) . . . . .	539
MIRABEAU . . . . .	547
ASSIGNATS (from a print in the National Library) . . . . .	566
NAPOLEON . . . . .	586
WATERLOO — LA BELLE ALLIANCE (from photograph) . . . . .	627
LOUIS PHILIPPE (Baron Gérard) . . . . .	636
GAMBETTA (from a photograph) . . . . .	670