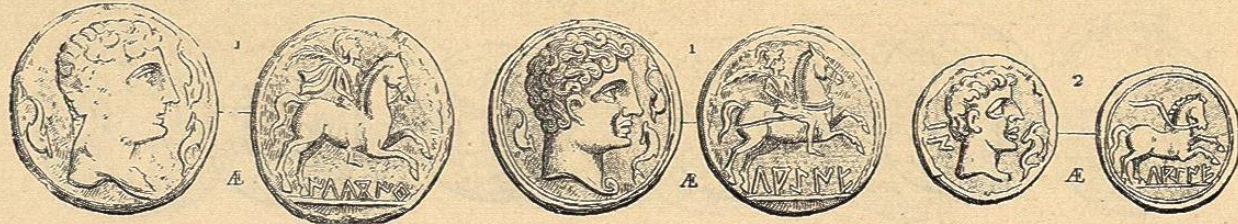


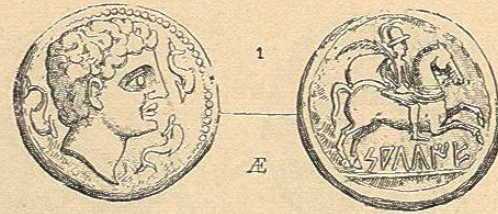
ILAUGIT (OLITE)?



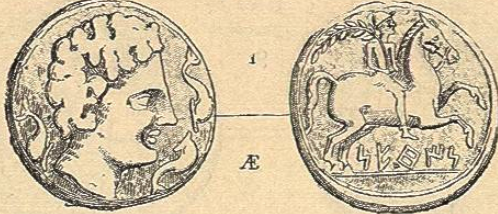
LAGUNA (LOCALIDAD INCIERTA)



SALVIE (LOCALIDAD INCIERTA)



SETISACUM (SÁSTAGO)



ERE (HERES)?

ALAVONA (ALAGON)



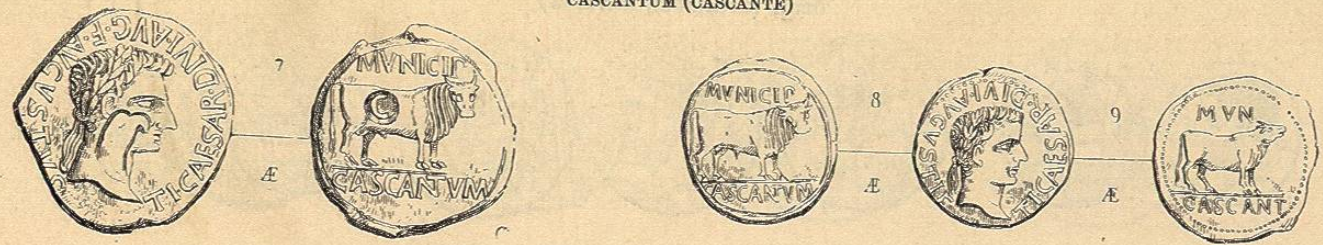
CALAGVERRIS JULIA NASSICA (CALAHORRA)



CASCANTUM (CASCANTE)



CASCANTUM (CASCANTE)



ECALA



ERALA (ERLA)?



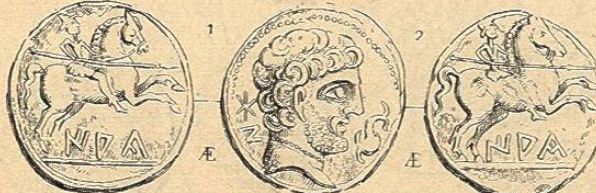
ERCAVICA (MILAGRO)



ESERA (LOCALIDAD INCIERTA)



IACA (JACA)



OLAIS (LOCALIDAD INCIERTA)



ETZCAS (EZCA)?



GRACURRIS (CERCA DE CORELLA)

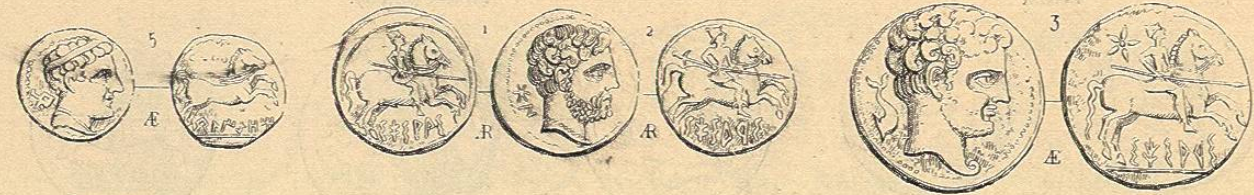


CAPILLA ALFONSO...
1882

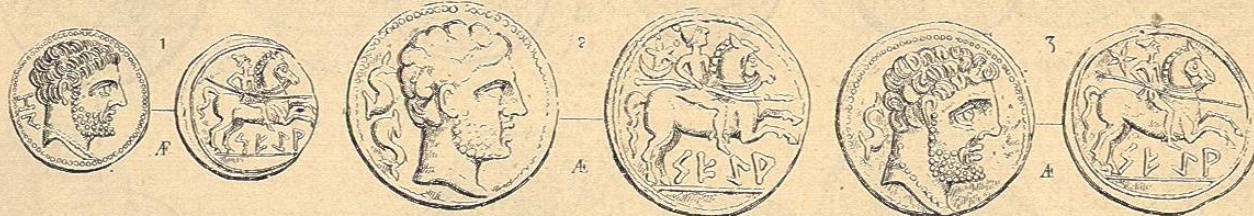
OLIGE (LOCALIDAD INCIERTA)



SESARS (LOCALIDAD INCIERTA)



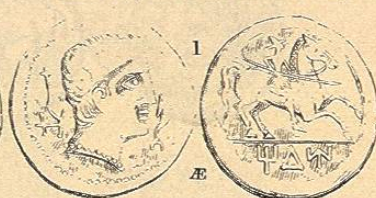
SEGEA Ó SEGIA (EJEA DE LOS CABALLEROS)



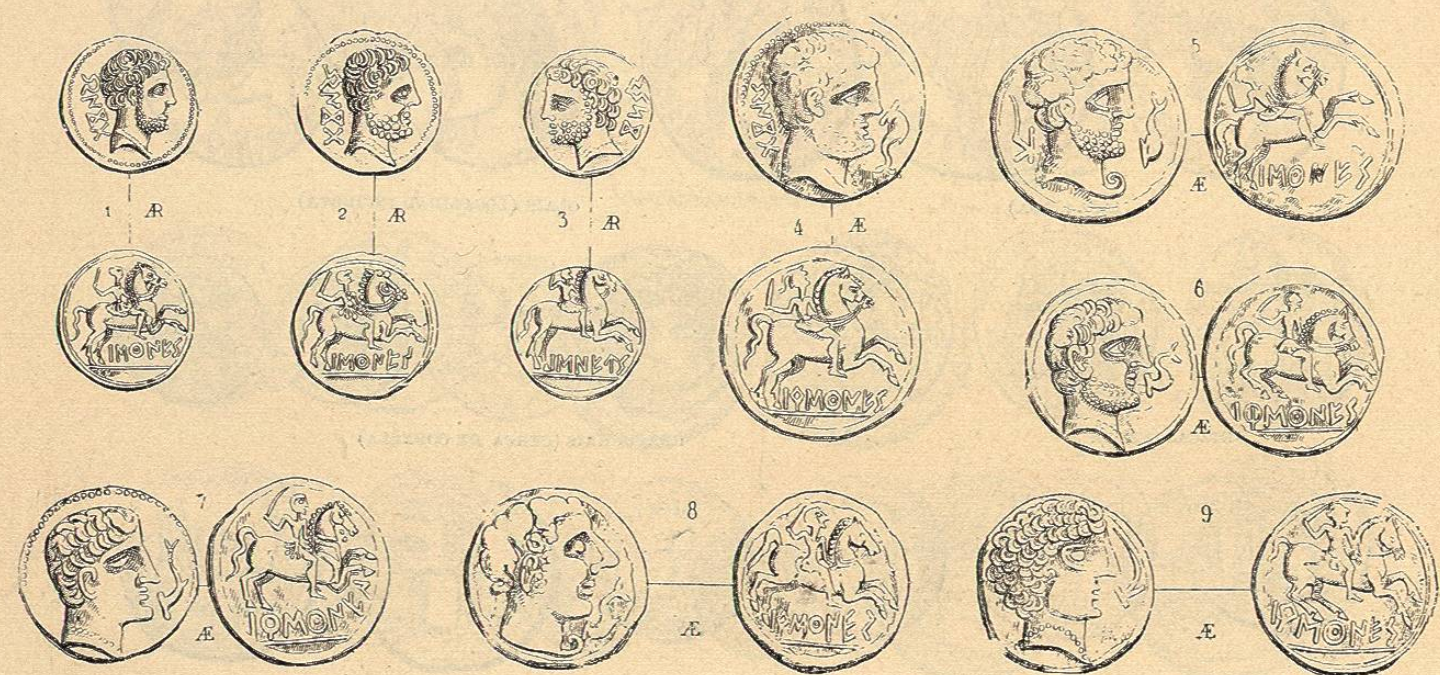
AINTZON Ó ONTZAN (LOCALIDAD INCIERTA)



TZOUM (LOCALIDAD INCIERTA)



BELSIUM (CERCA DE MALLÉN)



BELSIUM (CERCA DE MALLÉN)



BURSAO (BORJA)



CARAVI (CERCA DE MAGALLÓN)



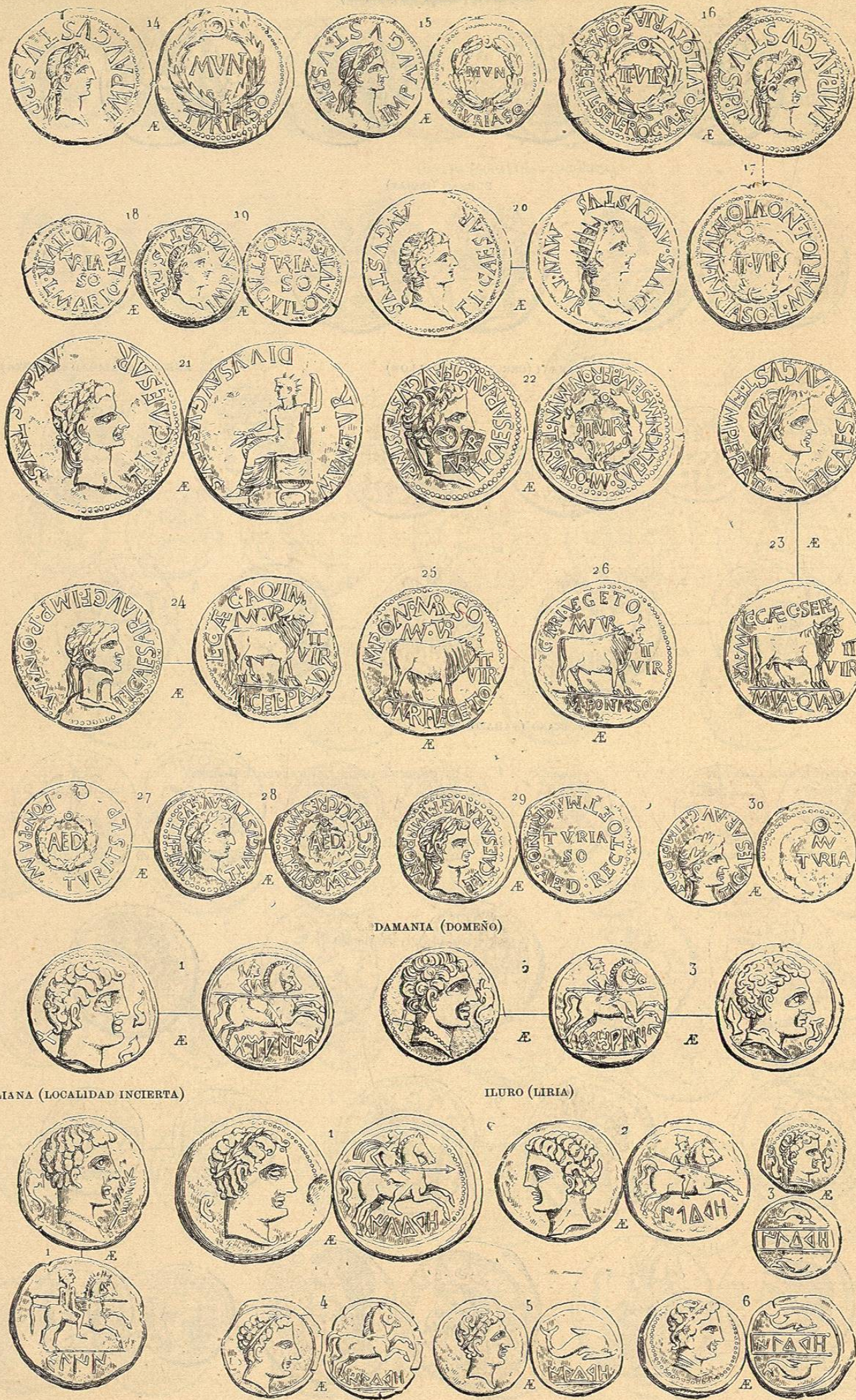
EBESI (LOCALIDAD INCIERTA)



TURIASO (TARAZONA)



TURIASO (TARAZONA)



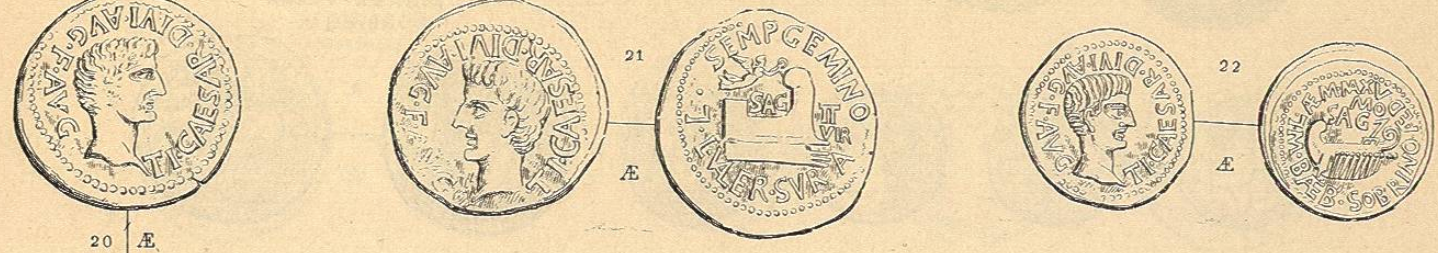
LAIES (LOCALIDAD INCIERTA)



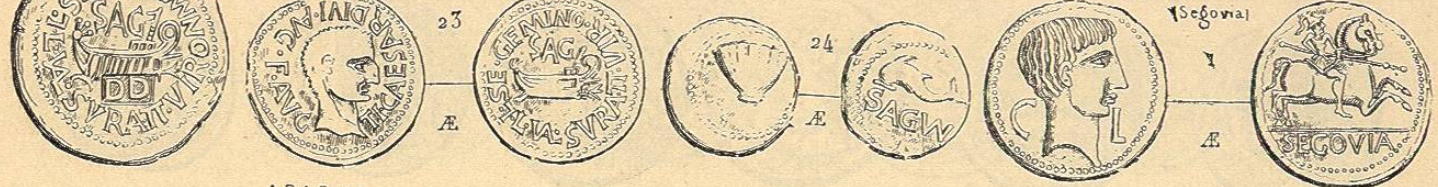
OSICERDA (LOCALIDAD INCIERTA)



SAGUNTO



SECOVIA



ARACILI (Medinaceli)



ARATZA (Aranda de Duero)

BARA Ó VARA (LOCALIDAD INCIERTA)



CISESA Ó CESADA (CERCA DE CARRASCOSA)

CLUNIA (CORUÑA DEL CONDE)

