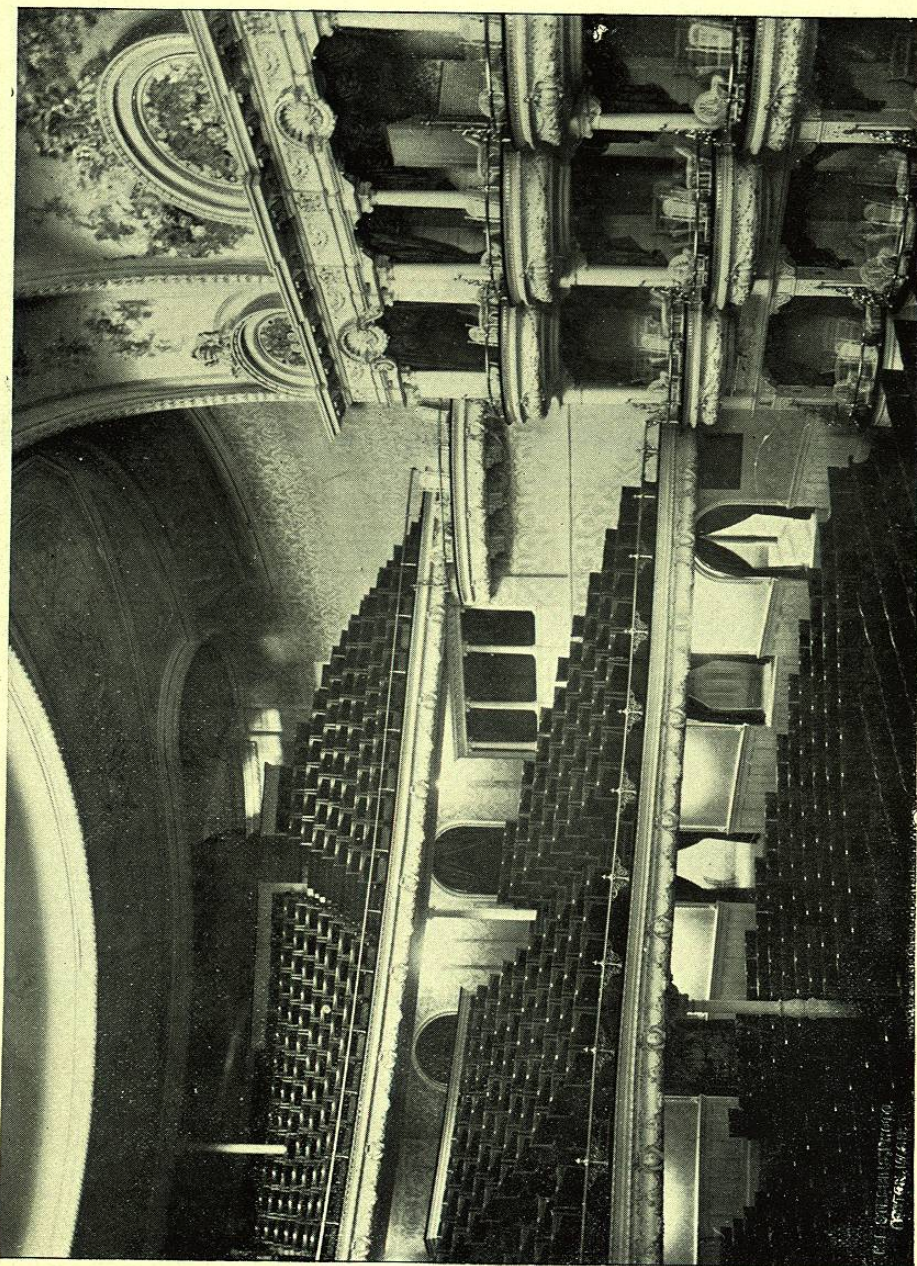




CEILING OF FOYER, CASTLE SQUARE THEATRE.





VIEW FROM STAGE, CASTLE SQUARE THEATRE.

If we now turn to a view of the stage, we find that the proscenium arch is 40 feet wide and 34 feet high to the overhead girders, and its soft velvet curtain hides an ideal stage, 68 feet wide and 45 feet in depth.

Almost every appliance known to the theatrical world has entered into the construction of this theatre. Its electrical equipment of one thousand 32-candle-power lamps is as nearly perfect as modern science can make it.

Broad entrances on each side lead to the streets adjoining, and a cavalcade of horses can enter at one side, make a circuit of the stage and return.

The switchboard which controls the light effects is a marvellous piece of mechanism. It is similar to that used at the Metropolitan Opera House, N. Y.

The theatre is fully equipped with the most approved fire-apparatus. Instead of single standpipes, a complete duplicate set is used. Adequate standpipes on each side of the stage are augmented by axes, hooks, brackets, and fire-extinguishers on each fly-gallery, paint-bridge, gridiron, and roof. In the construction only iron, marble, and brick have been used. There are no wooden beams, bracings, or floors; in fact, no wood-work of any kind, even composition mouldings taking the place of wood in the door-trimmings.

The seating capacity is from 1600 to 1800.

The general outlay of the Castle Square Theatre is shown by the plan, which fully describes the main floor or parquette, and parquette circle, with all the necessary entrances and stairways leading to the various portions of the house.

The main entrance to the grand foyer is from Castle Square, the entrance to the right from Chandler Street, and that from the left an alley leading to Tremont Street. The main entrance, from Castle Square, is 16 feet wide, the Chandler Street entrance 10 feet wide, and that from Tremont Street also 10 feet.



The balcony is reached from the grand foyer; the gallery from stairways to the right and left adjoining the Chandler Street and alley entrances. These latter stairways are each 6 feet wide and built of iron and slate.

From the foyer and lobbies the auditorium is reached by ten wide doorways. The auditorium is 79 feet 6 inches wide, 85 feet 6 inches deep, and 70 feet in height to the top of the dome ceiling. All calculations are taken from the curtain line. The outer line of the footlights from the curtain-line is 6 feet, the orchestra rail 11 feet, and the latter is drawn from a point upon the centre-line of the opening extending backward 58 feet, and from the same point the seat-rows of the parquette, 2 feet 8 inches apart, are drawn.

The parquette circle is arranged in steps which are described from a point upon the centre-line extending into the auditorium 9 feet 6 inches. (See the plan, upon which these figures are clearly shown.)

The first stepping of the circle is 2 inches, and each successive step is increased by  $\frac{1}{2}$  inch for 13 steps.

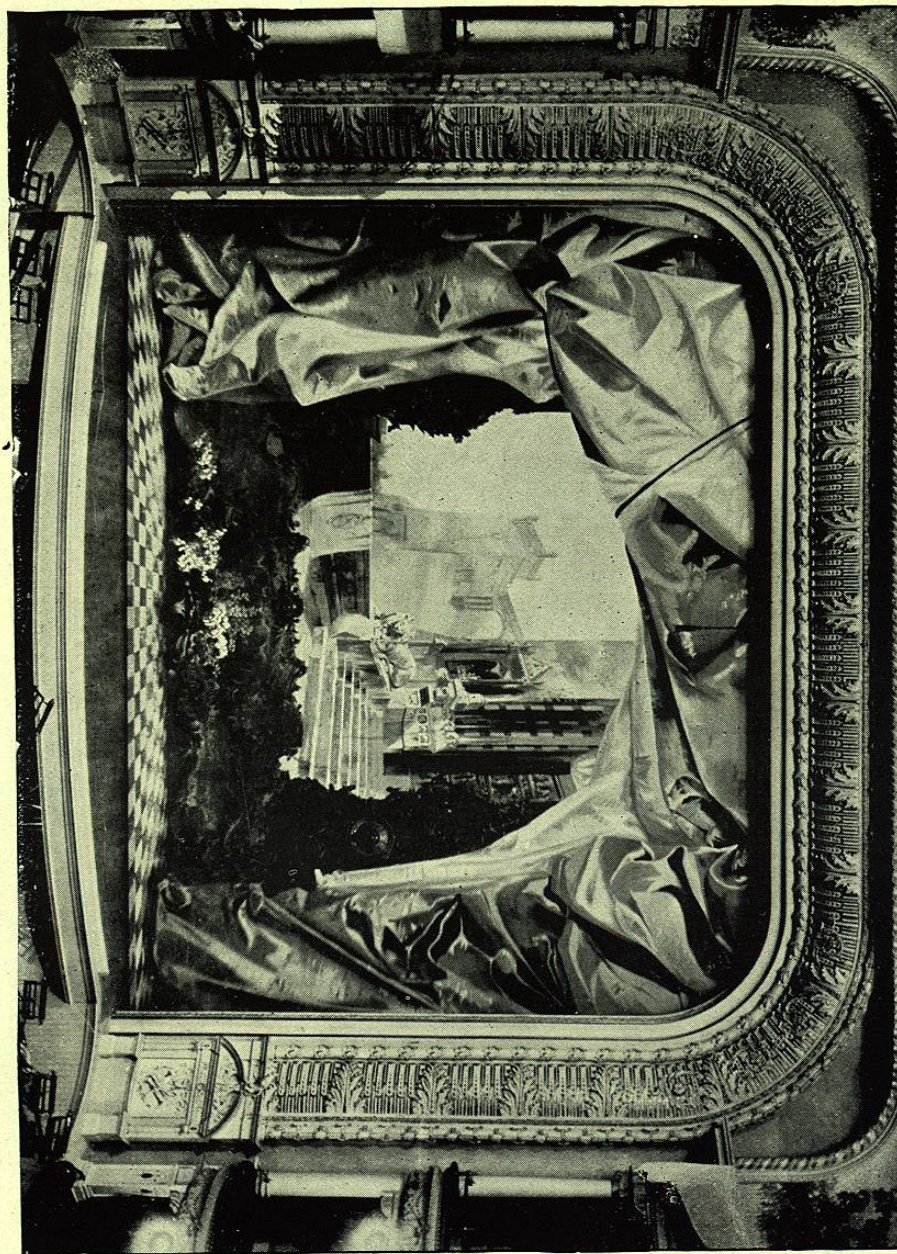
The various aisles of this main floor are divided as shown, 3 feet wide at the orchestra-rail and 5 feet nearest the outer circle.

The boxes, six in number, are reached through small reception-rooms connected by a passage leading to the lobby on the right and the left of the entrance from Tremont Street.

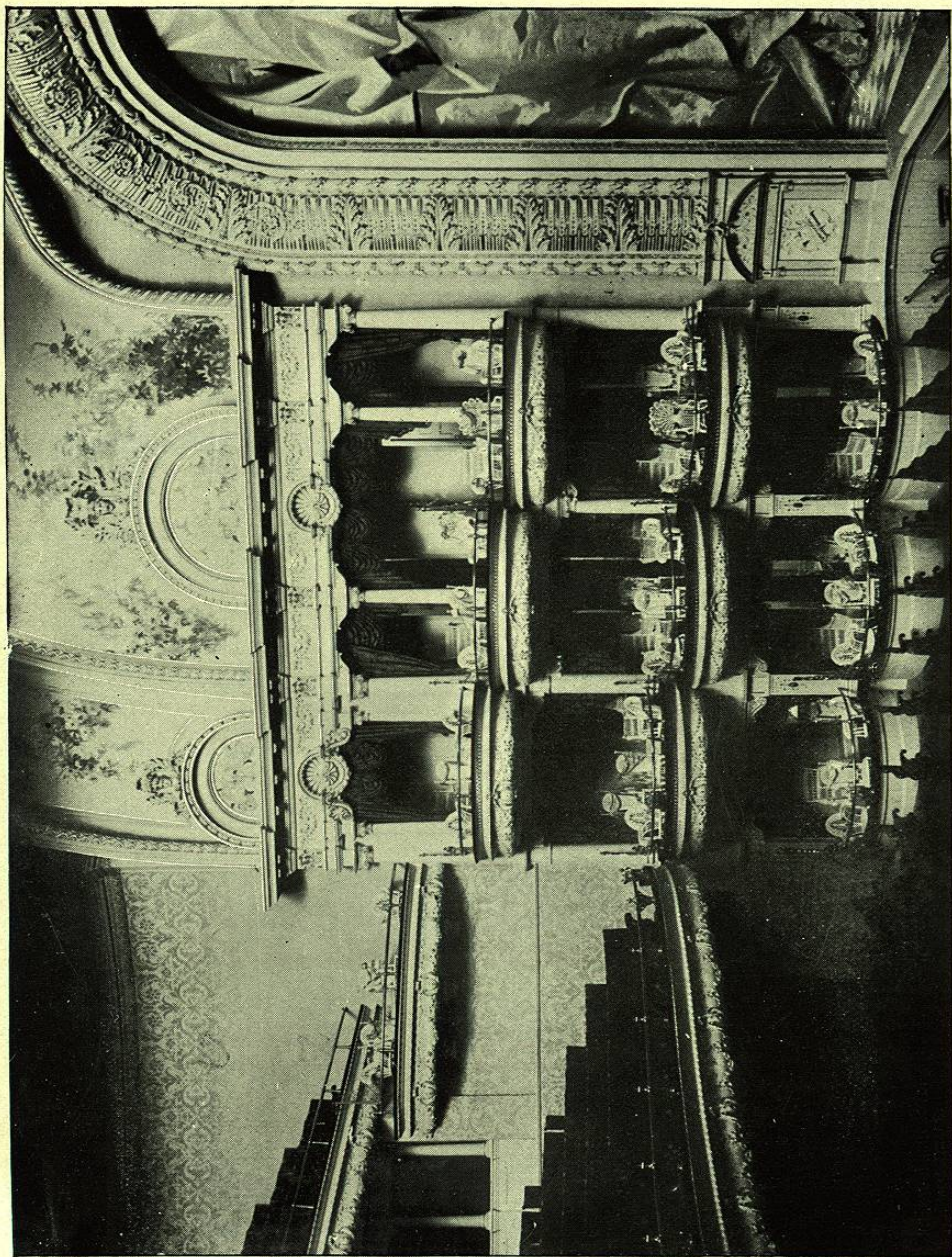
There are also upon this floor, connected to the lobbies, check-rooms, writing-room, telephone-room, and toilets attached to the ladies' parlor and the smoking-room.

The check-room to the right under the balcony staircase is 7 feet 6 inches wide by 14 feet long, and the left check-room, under the corresponding staircase, is the same size. Adjoining this left check-room are the telephone and writing rooms, 7 feet 6 inches wide by 16 feet long. The toilet

VIEW OF STAGE, CASTLE SQUARE THEATRE.







PROSCENIUM ARCH AND BOXES, CASTLE SQUARE THEATRE.

adjoining the ladies' parlor is 7 feet 6 inches by 16 feet, and that of the smoking-room 10 feet 6 inches by 12 feet.

The boxes are each 8 feet deep, with a portion of the circle deducted, by 8 feet in width, and the passages leading to the reception-rooms of the boxes are 3 feet 9 inches wide.

The stage is commodious and easy of access to the street, at the right through a passage 10 feet wide, and at the left through the alley or court. The dressing-rooms, in addition to those shown upon this plan adjoining the office, are placed upon the floor above.