

8.14.217

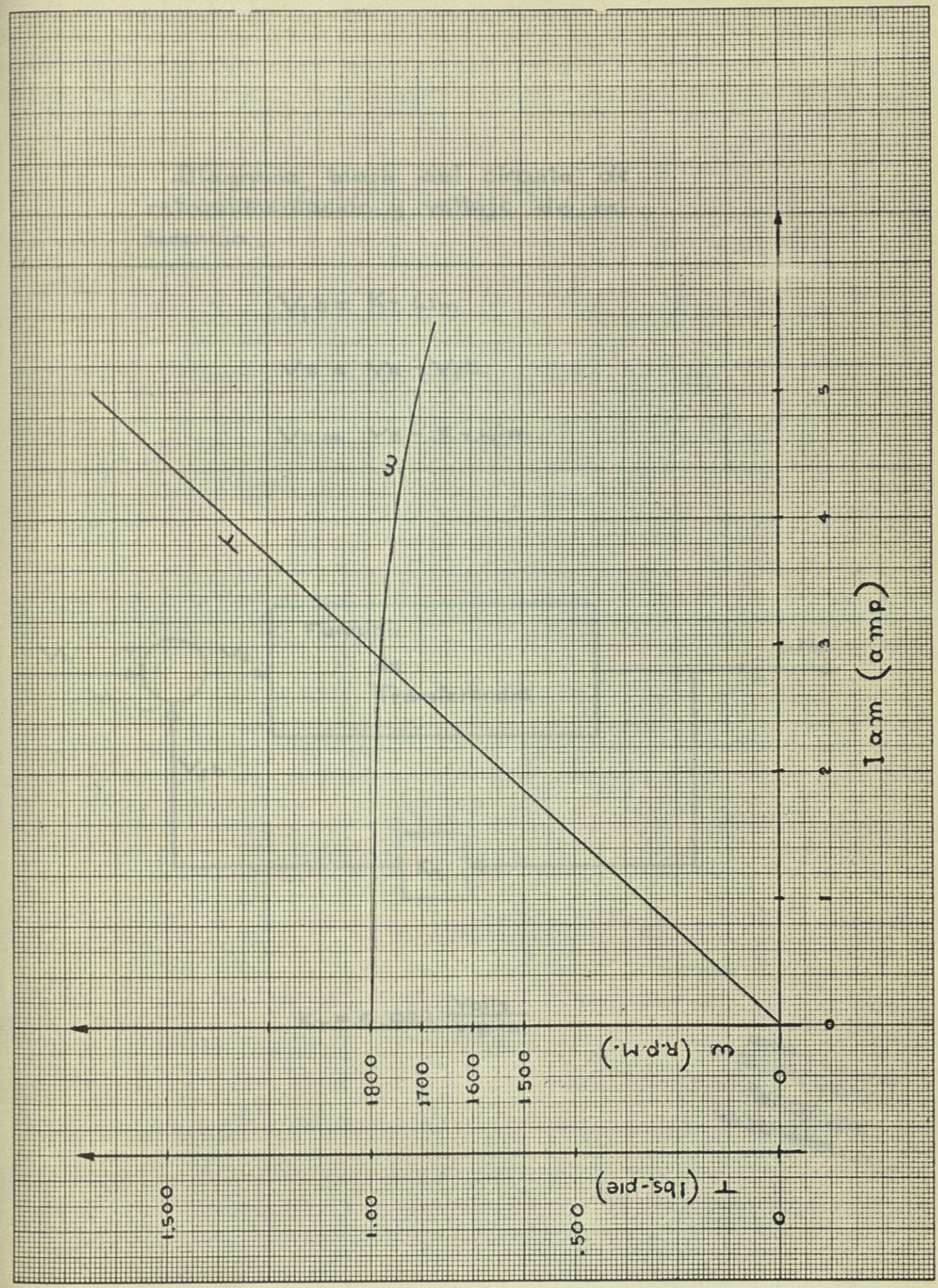
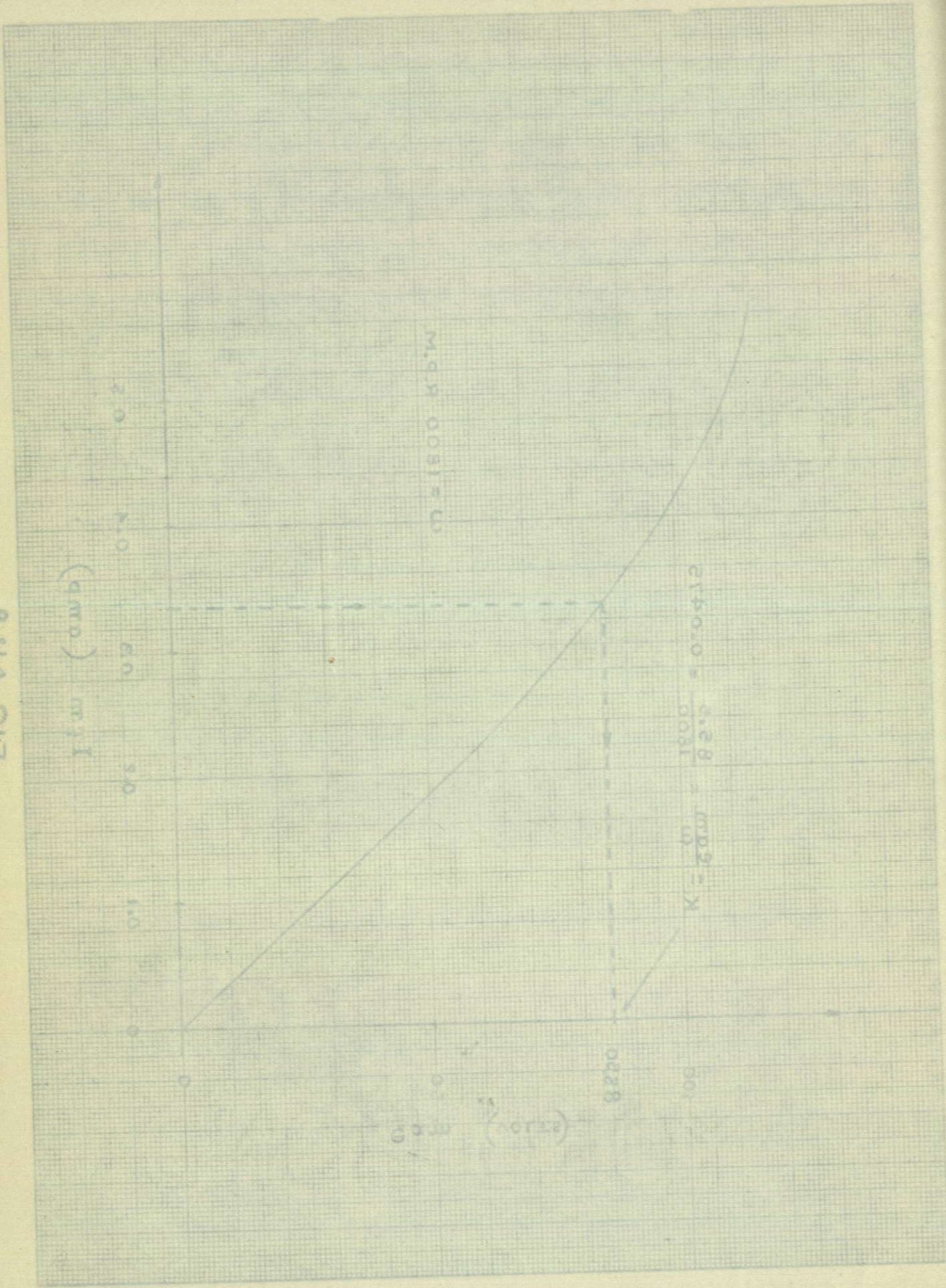


FIG. N° 9



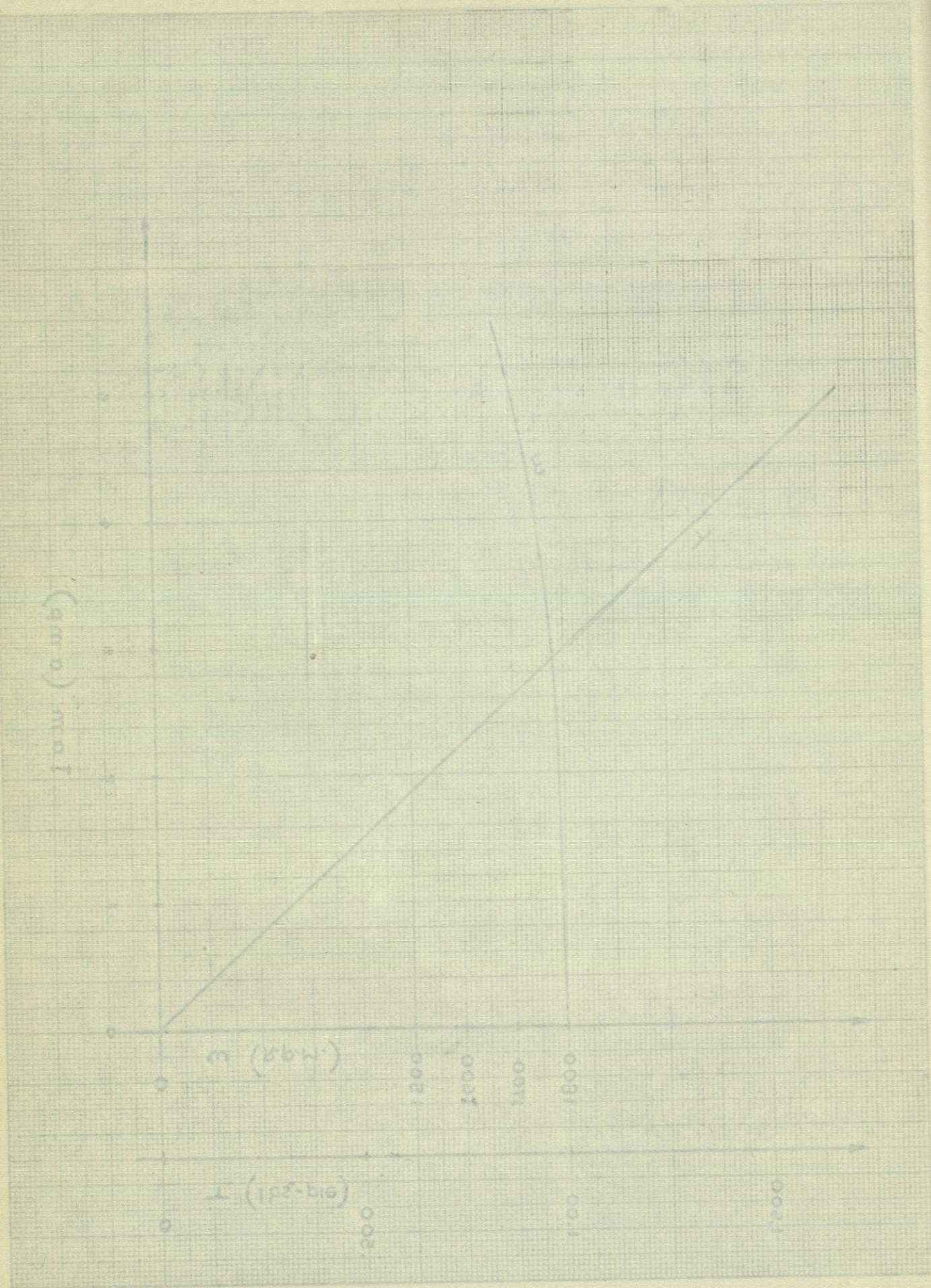
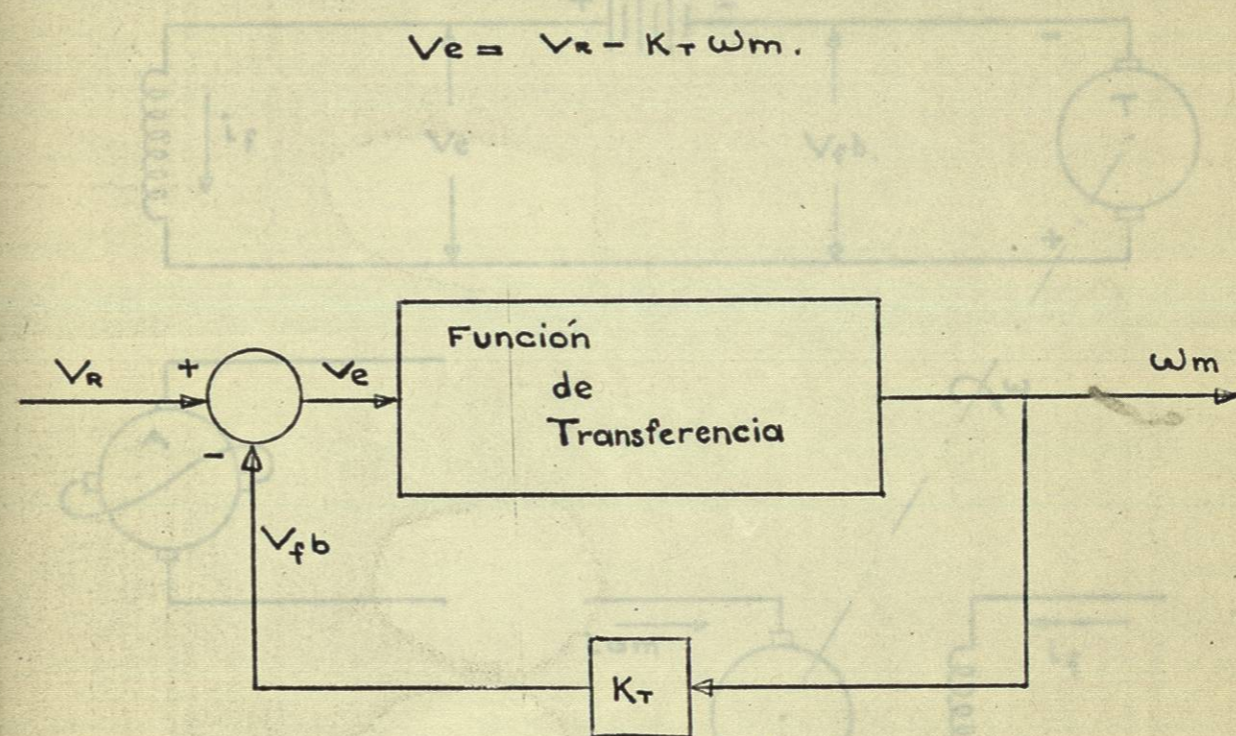


Diagrama block del circuito de retroalimentación y voltaje de referencia.

$$V_{fb} = K_T \omega_m$$

$$V_e = V_R - V_{fb}$$

$$V_e = V_R - K_T \omega_m$$



$$K_T = 0.021 \frac{\text{Volts.}}{\text{r.p.m.}}$$

FIG. N° 10

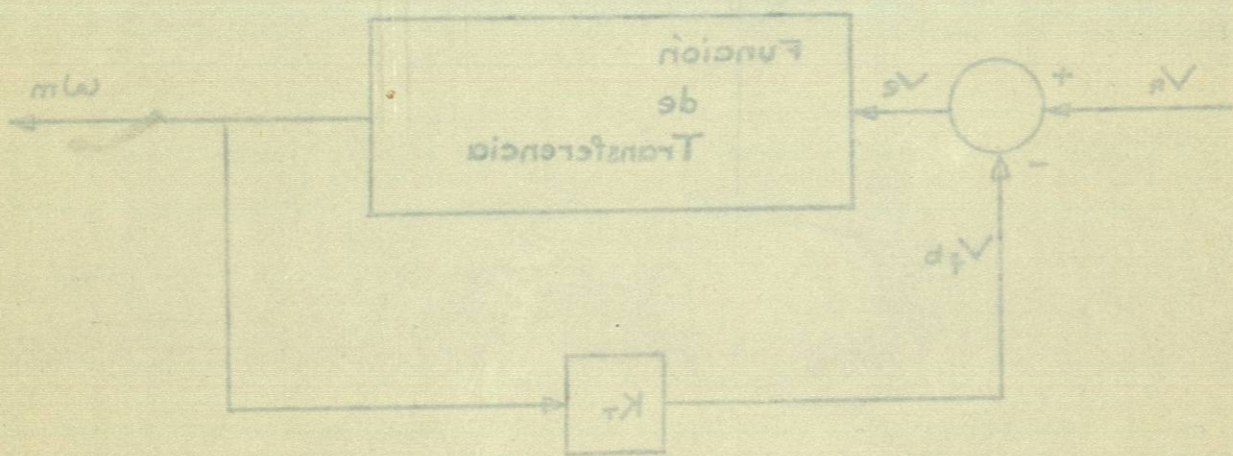


Diagrama block del circuito de retroalimentación y voltaje de referencia.

$$V_{fb} = K_T \omega_m$$

$$V_e = V_a - V_{fb}$$

$$V_e = V_a - K_T \omega_m$$



$$K_T = 0.051 \frac{\text{Volts}}{\text{r.p.m.}}$$

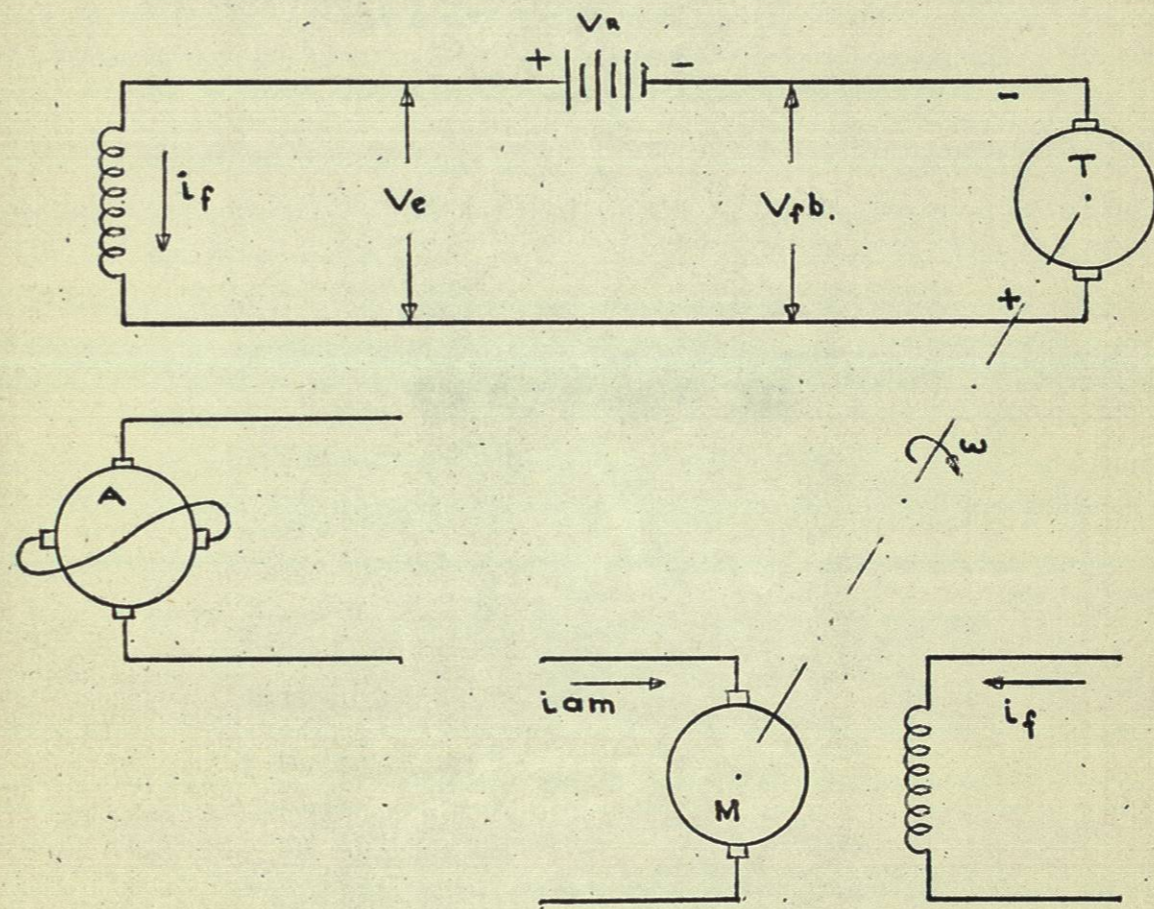


FIG. N° 10