

Task 1

Read the article through, then consider the underlined statements-sentences or phrases — and decide whether they are facts or opinions, (write down in the second column which words mostly influenced your decision.)

New Victim in South Africa: The Ecology

By SUE ARMSTRONG

New Scientist

Fact or Opinion Words turning statements into an opinion

JOHANNESBURG, South Africa —South Africa has squandered its natural resources for decades and let a legacy of environmental problems for future generations, according to a recently released report for the government.

It is vital to halt these trends, the report's authors says, but at a time of high expectations they warn that people may see environmental protection as a brake on development rather than a necessity.

The African National Congress commissioned Canada's International Development Research Center (IDRC) to assess the country's environmental problems and recommend actions. Six specialists from South Africa and six from other countries worked on the report, led by Anne Whyte of the IDRC.

The report shows that South African President Nelson Mandela has inherited a country with some of the worst environmental problems in the world. Many are the legacy of apartheid.

For example, under the previous regime black people, who make up 80 percent of the population, were allocated only 13 percent of the land. This led to chronic overcrowding in the "homelands" reserved for black people, and plundering of natural resources.

Today this land is widely deforested, deeply eroded, and only marginally fertile.

Poor farming practices in both black and white farming areas have led to the loss of 400 million tons of topsoil a year for a decade.

Until 1986, black people who left the impoverished countryside for the cities in search of work were considered "sojourners," so no formal plans were made to provide proper housing or services.

For decades, urbanization has been rapid and chaotic, and today millions live in shanty dwellings without access to clean water, sanitation, refuse disposal or electricity, in conditions of chronic pollution.

Mandela's government must also tackle industries using outdated equipment. The country's electricity, for example comes mainly from aging coal-fired power plants.

The new government has made the right noises about sustainable development in its policy documents, but critics say it is weak on specifics and faces formidable obstacles in translating principles into practice.

It has inherited a system of fragmented responsibility for the environment, toothless laws and few environmental inspectors.

Countrywide there are only seven air pollution and nine soil conservation officers. Another problem is that the idea of environmental protection has deeply negative connotations for most black South Africans, after decades in which it was used by whites to justify evicting hundreds of thousands from their land to protect wildlife.

The IDRC report recommends that responsibility for enforcing environmental laws should be removed from the many government departments that now play a role and given to a central inspectorate.

Task 2

Read the text on page 210 *New Victim in...* and answer. There could be more than one answer.

- After reading the text, can you recognize whether it is
 - an article about Nelson Mandela?
 - an article about environment?
 - an article about racism?
 - an article about one of the legacies of apartheid?

- The author's intention in this article is
 - to inform about the environmental consequences of an unequal society
 - to predict what will happen in South Africa
 - to increase awareness about what is happening in South Africa
 - to criticize certain kind of social organization

- The author's attitude towards the issue she writes about is

admiration	<input type="checkbox"/>	concern	<input type="checkbox"/>
commitment	<input type="checkbox"/>	reflexion	<input type="checkbox"/>

- According to the article's title *New Victim in South Africa: The Ecology*, the tone used by the author is

ironic	<input type="checkbox"/>	realistic	<input type="checkbox"/>
funny	<input type="checkbox"/>	sympathetic	<input type="checkbox"/>

Discuss your answers with a partner. Make in your classroom a bulletin board with some data from South Africa and from Nelson Mandela.

Skill: Fact vs Opinion

Task

Read the following statements and decide whether they are Facts or Opinions

		<u>Fact</u>	<u>Opinion</u>
1	South Africa is a long, dark road with no light and few sign posts	<input type="checkbox"/>	<input type="checkbox"/>
2	Long before whites arrived, South Africa was composed of numerous tribes, including Bantu-speaking farmers	<input type="checkbox"/>	<input type="checkbox"/>
3	Mandela won the first free election hold in South Africa	<input type="checkbox"/>	<input type="checkbox"/>
4	Now, people expect the moon from Mandela	<input type="checkbox"/>	<input type="checkbox"/>
5	Some people think that black violence is going to get much, much worse unless black lives get much much better	<input type="checkbox"/>	<input type="checkbox"/>
6	"You have to be black to get anything now" says white Lionel, a 24 year-old trainee accountant.	<input type="checkbox"/>	<input type="checkbox"/>
7	Up in the hill, a black vendor of wool says, "Mr. Mandela is a friend of the people"	<input type="checkbox"/>	<input type="checkbox"/>
8	It's amazing how serene Nelson Mandela looks when people expect nothing short of salvation from him	<input type="checkbox"/>	<input type="checkbox"/>
9	"Houses, schools and jobs." One can hear these three wishes again and again -not always in the same order, but never without total urgency	<input type="checkbox"/>	<input type="checkbox"/>

Learning it up Review

Write sentences from the texts in different tenses

e.g.: Present tense: **Mandela wins the first free election in South Africa**

Present tense	_____
Future tense	_____
Present Perfect tense	_____
Past Perfect tense	_____
Passive Voice	_____

Words at work Verb and noun endings

Task 1

Complete this chart of verbs taken from the texts.

Infinitive	Past tense	Present Participle	Past Participle
Shock			known
	held		
support		enforcing	
short			
			inherited
			been
provide			
			made
		announcing	
lose			
	left		
spread			led

Task 2
Complete the table.

Verb	Noun
_____	development
_____	government
_____	movement
legislate	_____
organize	_____
urbanize	_____
pollute	_____
describe	_____
_____	information
_____	instruction
advertise	_____
request	_____
_____	expression
judge	_____

What have you noticed? What endings change a verb into a noun? _____

Time to read!⁽⁴⁾

Choose three advertisements that you like.

- 1 _____
- 2 _____
- 3 _____

Tick the feature(s) you like the most of each one

	models	ad	character(s)	setting	slogan	music/ jingle	product	text
1								
2								
3								

Compare with 2 or 3 partners.

Task 1

Imagine you are going to buy a watch. What kind of characteristics would you look for? Below there is a list of features you might consider important.

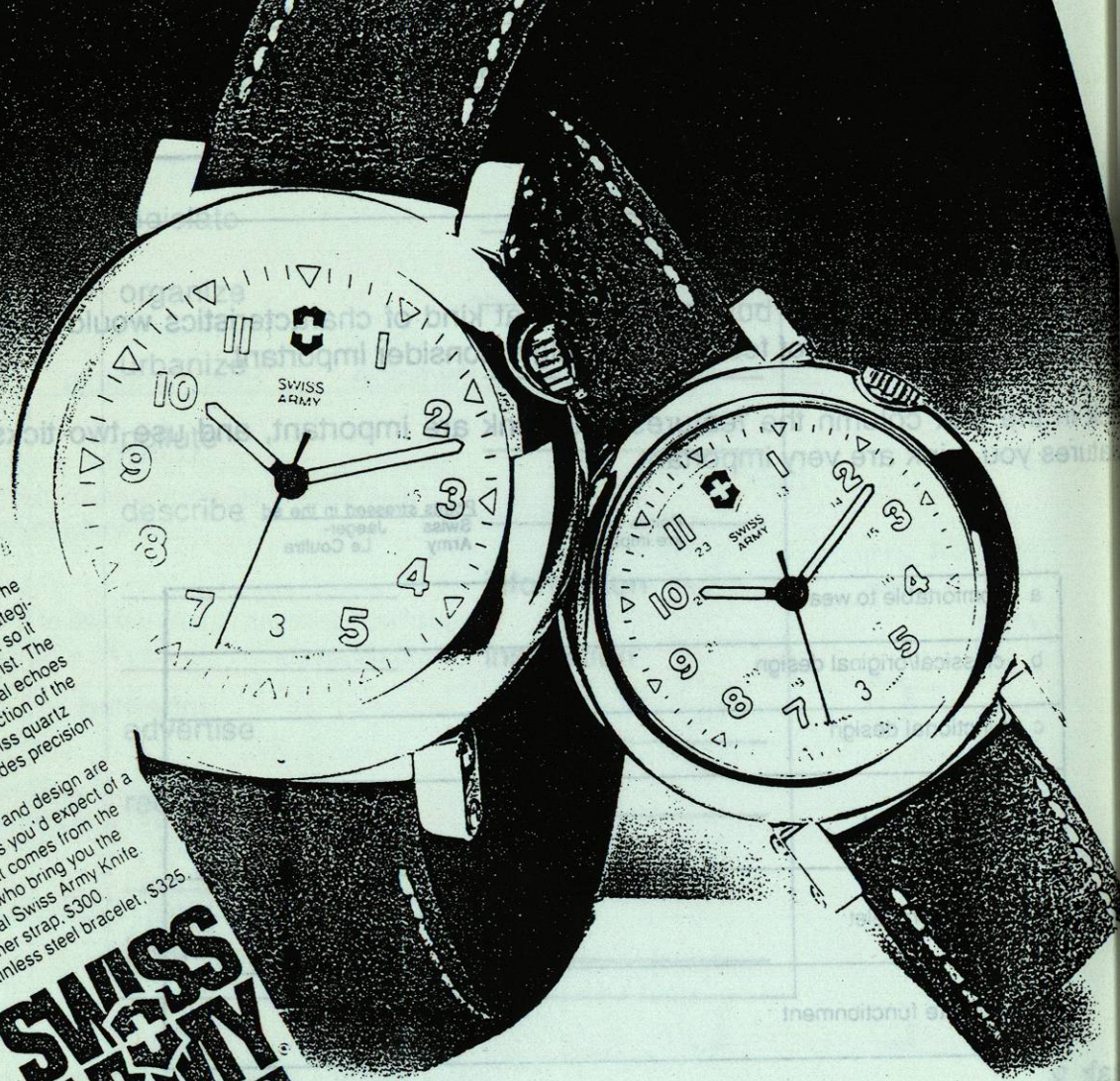
Tick in the first column the features you think are important, and use two ticks the features you think are very important.

	Points you feel are important	Points stressed in the ad Swiss Army Jaeger- Le Coultre
a comfortable to wear		
b classical/original design		
c functional design		
d metal bracelet		
e leather bracelet		
f accurate functionment		

Task 2

Now read the following two ads for watches. As you read tick the points in the table which are mentioned (✓) or stressed (✓✓)

BUILT LIKE OUR SWISS ARMY KNIFE.



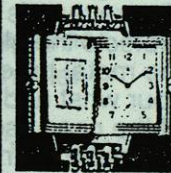
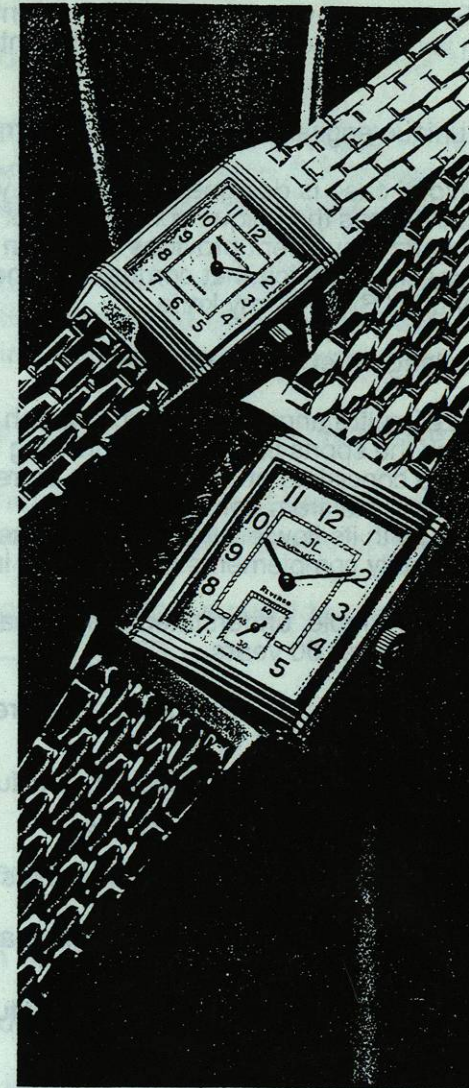
Introducing the unique engineering of the Swiss Army Brand Delta™ Watch. Its innovative pivotal case is designed to flex with you. The stem is recessed and strategically placed at 2 o'clock so it never digs into your wrist. The domed mineral crystal echoes the unique construction of the case. And the Swiss quartz movement provides precision accuracy.

Function and design are one. Just as you'd expect of a watch that comes from the people who bring you the Original Swiss Army Knife. Leather strap, \$300. Stainless steel bracelet, \$325.



REVERSO. AVANT-GARDE SINCE 1931.

IN 1931 JAEGER-LECOULTRE ANNOUNCED A WRISTWATCH DESIGNED TO BE EQUALLY AT HOME ON THE SPORTS FIELD OR IN THE DRAWING ROOM. THE REVERSO'S CASE, CONSISTING OF 37 PARTS, CAN BE REVERSED WHICH PROTECTS THE GLASS AND DIAL FROM DAMAGE. THE METAL BRACELET, WITH ITS FLAWLESSLY MACHINED LINKS, FITS SNUGLY TO YOUR WRIST AND PERFECTLY COMPLEMENTS THE ART-DECO INSPIRED LINES OF THE CASE ITSELF. A CLASSIC EXAMPLE OF SIMPLE, UNDERSTATED STYLING THAT HAS WITHSTOOD CHANGES IN FASHION FOR OVER 60 YEARS.



ORIGINALLY DESIGNED TO PROTECT THE GLASS, THE MECHANISM TURNS THE WATCH SMOOTHLY THROUGH 180° TO REVEAL THE WATCH'S OTHER FACE, HIGHLY SUITABLE FOR ONE'S FAMILY CREST, COAT OF ARMS OR INITIALS.

