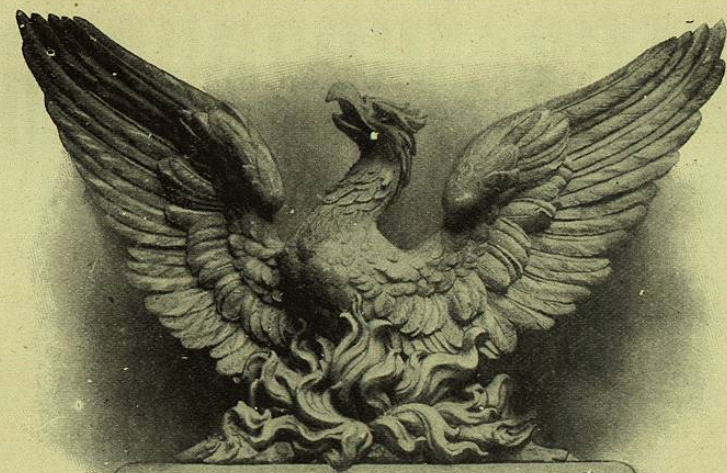


ADVERTISEMENTS.

PHENIX ASSURANCE COMPANY LIMITED
 COMPAÑIA INGLESA DE SEGUROS CONTRA INCENDIO.
 Establecida en 1782.



Esta Compañia es conocida especialmente por la eficacia, prontitud y liberalidad en el pago de sus siniestros.

Seguros sobre toda clase de propiedades asegurables bajo las condiciones mas favorables á tipos reducidos.

Capital enteramente suscrito y Fondos acumulados, mas de ... \$50,000,000.
 Ingreso anual por primas de Seguros, mas de ... \$15,000,000.
 Pérdidas pagadas por siniestros desde su fundacion, mas de ... \$295,000,000.

AGENCIA GENERAL PARA LA REPUBLICA MEXICANA,
 Calle de Cadena, No. 14. MEXICO, D.F. Correo Apartado 832.
 HUGO MARQUARD, Gerente.

ROSING BROTHERS & CO.,
 10, Basinghall Street, E.C., Londres.

COMISIONES - IMPORTACIÓN - EXPORTACIÓN.

Representante en la Ciudad de México—HUGH MARQUARD.

P. SANDOVAL.

A. SANDOVAL.

P. SANDOVAL Y CA.

BANKERS.

NÓGALES, SONORA, MEXICO.

Branch at Nogales, Arizona, U.S.A.

P. SANDOVAL Y CO.

Cable Address Lavodnas.

Agentes del Banco Nacional de Mexico.

Agentes del Banco de Sonora.

ESTABLISHED IN THE YEAR 1841.

**THE MERCANTILE AGENCY,
 R. G. DUN & CO.**

Mercantile Reports on the Credit standing of Firms, Individuals, and Companies, etc.

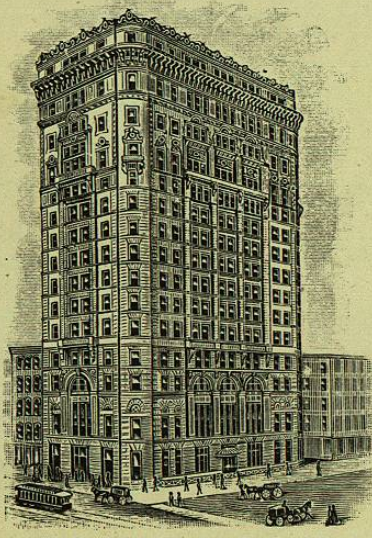
COLLECTIONS UNDERTAKEN IN ALL PARTS OF THE WORLD.

160 OFFICES

In the United States, Canada, Europe, Australia, Africa, Cuba, South America, Mexico.

Mexico, D.F., Guadalajara, Torreon and Monterey.

EDWIN W. SOURS, General Manager, San Agustin, No. 7, Mexico, D.F.



DUN BUILDING, NEW YORK.

ADVERTISEMENTS.

PAUL S. LIETZ,
 President and General Manager.

W. A. L. SCHAEFER,
 Vice-President and Treasurer.

Cable—"BUILDER."

H. C. A. WOORT,
 Secretary.

LIC. F. GONZALEZ MENA,
 Attorney.

**THE MEXICAN
 Construction and Engineering Co., Ltd.**

Compania Mexicana de Construcciones y Obras de Ingenieria (S.A.)
 Organizada conforme á las leyes de México.

General Contractors and Builders,

Offices: Third Floor, 17 and 18, CENTRO MERCANTIL,

Apartado 2 B, CITY OF MEXICO.

This Company undertakes the erection and construction of all classes of PUBLIC AND PRIVATE BUILDINGS, SEWERS, WATERWAYS and SUBWAY CONDUITS, &c. They employ a large corps of competent engineers and draughtsmen, and will be pleased to give estimates on all classes of construction work.

CORRESPONDENCE SOLICITED.

WILLIAM YOUNG & CO.

COMERCIANTES Y COMISIONISTAS.

Representantes de Casas Extranjeras.

Importadores y Exportadores.

Calle de Gante No. 11 - - MEXICO.

(Apartado Postal No. 485).

Especialidad en toda clase de material para Ferrocarriles y para Minas etc.; Productos Quimicos para la Industria y la Minería etc.; Material para Telégrafos; Fierro Acanalado Galvanizado; Tubería de Fierro y Acero etc. etc.

Maquinaria para beneficiar Cafe y Arroz etc.

Importadores (por mayor y en comision) de Abarrotos y licores Extranjeros etc.

Corresponsales en

Nueva York, Londres, Liverpool, Glasgow, etc. etc.

A. J. PEYTON & CO.,

Bankers,

69, Wall Street,

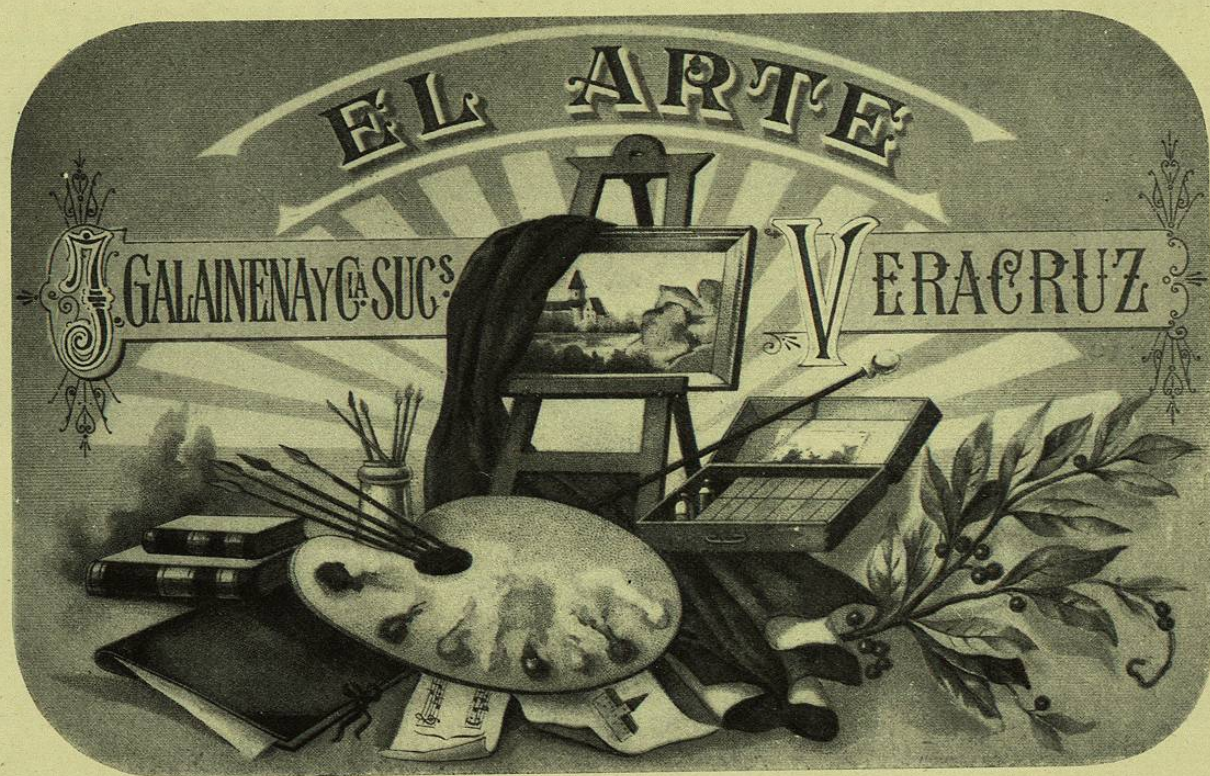
NEW YORK, U.S.A.

1st San Francisco Street No. 7,

MEXICO, D.F.

“EL ARTE”

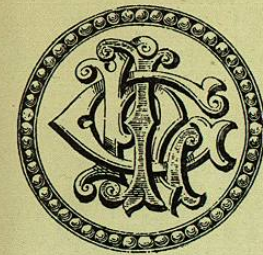
Gran Fábrica de Puros y Cigarros elaborados con rama de las



mejores vegas de Valle Nacional, Ozumacín y San Andrés Tuxtla.

PROPIETARIOS:—

J. GALAINENA Y CIA SUCOS
VERACRUZ, MÉXICO.



GEORGE HENRY LEE & CO., LTD.,

22 to 36, BASNETT STREET,

LIVERPOOL.

The Leading Fashion Emporium

In the North of England.

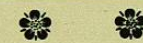
Specialités:

Foreign Outfits. . .

Wedding Outfits.

Layettes.

Dressmaking. . .



Show Rooms.

- Robes
- Costumes
- Millinery
- Mantles
- Furs
- Tea Gowns
- Boots and Shoes
- Furnishing
- Carpets
- Bedsteads, &c.



Departments.

- Silks
- Dress Fabrics
- Laces
- Handkerchiefs
- Gloves
- Ribbons
- Flowers
- Umbrellas
- Waterproofs
- Linens
- Damasks
- Silver Goods
- Electro Plate
- China
- Smallwares
- Dress Trunks
- Portmanteaux
- &c.

Dressmaking. Dresses made to order from Pattern Bodice and Skirt Measures.

Orders by Mail accompanied by Remittance or Bank Reference receive Prompt Attention.

Patterns of Silks and Dress Materials sent by Return Mail on request.

Address all Orders to—

George Henry Lee & Co., Ltd.,

22 to 36, Basnett Street, LIVERPOOL,

ENGLAND.

ADVERTISEMENTS.

**BRINGING MEXICO . .
 . . UP TO DATE.**

Everyone who is interested in Mexico will be interested in the Blue Book of Mexico, a unique and distinctly valuable directory-guide to the Mexican capital. The book has just been published by the Massey-Gilbert Co., of 3a Independencia 6, Mexico City, and 309 North Third Street, St. Louis, Mo. It is a neat, cloth-bound, gold-lettered affair, 5¼ x 7½, containing in concise, condensed form a mass of valuable information about Mexico City, her Government, Banks, Railroads, Theatres, Bull Fights, Churches, Schools, Public Buildings, etc. One great value of the book to Americans generally, and to business men particularly, lies in the accurate classified business directory of all Mexico City firms, indexed in Spanish and in English, embracing 3,000 names and 450 classifications. There is also a directory of all English-speaking people in Mexico City—5,000 in all—and a club and social directory of more than a thousand names in which all prominent clubs and society people of Mexico are included. Incidentally, there is a directory of the lodges, the diplomatic corps, a late map of the city and a score of those little features which make a book of this sort thorough and complete. It is the first directory to be published in English in Mexico, and most of its subject-matter has never been compiled before in either language. Sent anywhere by the publishers on receipt of the price, \$3.00, U.S. currency.

**THE MASSEY GILBERT CO. Sucs.,
 Publishers, Apdo. 2024,
 MEXICO, D.F.**

**NEW YORK & CUBA MAIL STEAMSHIP CO.
 WARD LINE.**

Two Scheduled Sailings Every Week Between

NEW YORK

— AND —

MEXICAN GULF PORTS.

Lowest Through Passenger and Freight Rates Between All Points in MEXICO, UNITED STATES and EUROPE, via TAMPICO or VERACRUZ.

O'KELLEY & CO., JOSE I. ISUSI,
 Agents, Veracruz. Agent, Tampico.

J. E. CATES, Traffic Manager.

Mexico City Office, Ganto No. 12.

Encino, Fresno, Avellano, Maple Nogal, Poplar, Caoba, Cerezo, Sabino, Madera Roja de California, Pino y Tea, y Maderas Nacionales.

INTERNATIONAL

Duela Americana para piso, de Maple, Encino al Hilo y Sego, Cerezo, Etc., Etc. Puertas y Ventanas, Molduras.

HARDWOOD CO., S. A.

(Compañía Internacional de Maderas Finas, S.A.)

COMERCIANTES

EN

MADERAS FINAS AMERICANAS y DEL

PAIS, PINO y TEA, &c.

DEPOSITO y DESPACHO:

CALLE DE RAMON FERNANDEZ No. 1.

Frente á la Estación del Ferrocarril Central

Teléfono, No. 1351. MEXICO, D.F.

"O wad some power the giftie gi'e us
 To see oursel's as ithers see us."

HENRY ROMEIKE

PRESS CLIPPING BUREAU,

THE FIRST ESTABLISHED

AND

MOST COMPLETE

Newspaper Cutting Bureau in
 the World.

110, FIFTH AVENUE,

NEW YORK.

Cable Address:—"ROMEIKE," NEW YORK.

ADVERTISEMENTS.

CHARLES CAMMELL & CO., Ltd.

Talleres de Acero y Hierro "Cyclops," en SHEFFIELD, Inglaterra.

Oficina en Londres; Calle Victoria, Num. 1, Westminster, S.W.

Talleres de Acero y Hierro, "YORKSHIRE," en PENISTONE, cerca Sheffield.
 Talleres de Artillería, Acero, Llantas y Resortes, "GRIMESTHORPE," en SHEFFIELD.
 Talleres de Hierro y Acero "DERWENT," en WORKINGTON, Cumberland. Talleres de Hierro, "SOLWAY," en MARYPORT, Cumberland.
 Agentes:—Señores SAMUEL HERMANOS Y CIA., Apartado 241, Mexico, D.F. MEXICO.

ZAPATOS

Y

DADOS

Forjadas

Especial de Acero

PARA

Maquinaria de Minas,

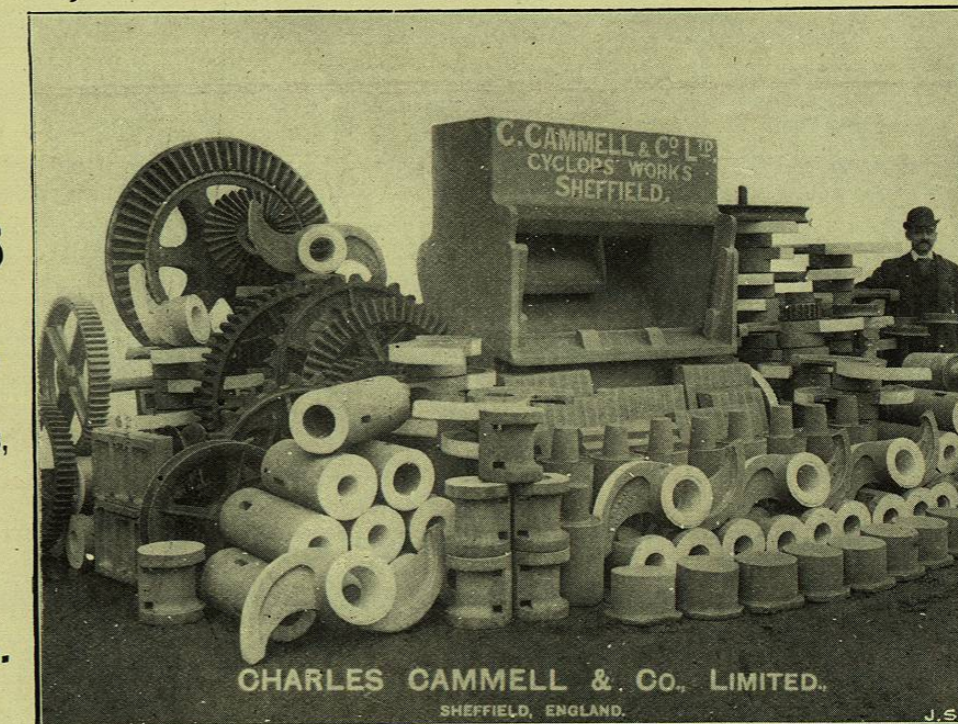
TAMBIEN

Acero Especial

PARA

Barrenas

de Minero.



CHARLES CAMMELL & Co. LIMITED.
 SHEFFIELD, ENGLAND.

Obras de
 Fundicion
 de cualquier
 tamaño ó modelo
 para
 Artilleria,
 Marina,
 Locomotoras
 y
 Dinamos,
 &c.

Fabricantes de **RIELES** de Acero Endurecido de "BESSEMER" de Mejor Calidad.

Eclisas de Acero dulce. PIEZAS FORJADAS PARA ARTILLERIA, Ejes Siguenales y de Helices, Barras de Union, Barras de Piston, Pistones y otras piezas forjadas para MAQUINAS MARINAS.

Simple y Doble Acero, Especial "TEMPLADO POR SI SOLO," para Herramientas. Acero Especial de la Marca "Cyclone," para Tornos de Corte Rapido y

Limas Sopladas de Arenas del Patente "Tilghman's."

Las Celebradas **LIMAS DE ACERO** colado y mejor refinado de las Marcas "Camel" y "Cyclops." Planchas de Armadura de Acero "Krupped," Acero Solido, Acero Niqueleado y Acero "Harveyed."

Los Unicos que tienen Privilegio y son Fabricantes en Inglaterra, del Systema "ABT" para Ferrocarriles "RACK," (Rieles dentados) en lugares montanosos y terrenos accidentados.

Ejes derechos y acomodados para Locomotoras, Barras de Union, "Coupling" y de Piston Llantas de Acero "Weldless" fundido al Crisol, "Siemens-Martin" y de "Bessemer." Resortes de suspencion, tracción y Espirales todas clases para Locomotoras.