

PART SECOND.

DERMOID AND MUSCULAR

SYSTEM:

NINETY-ONE FIGURES.

PART SECOND.

DERMOID AND MUSCULAR

SYSTEM:

NINETY-ONE FIGURES.



FIG. 129.

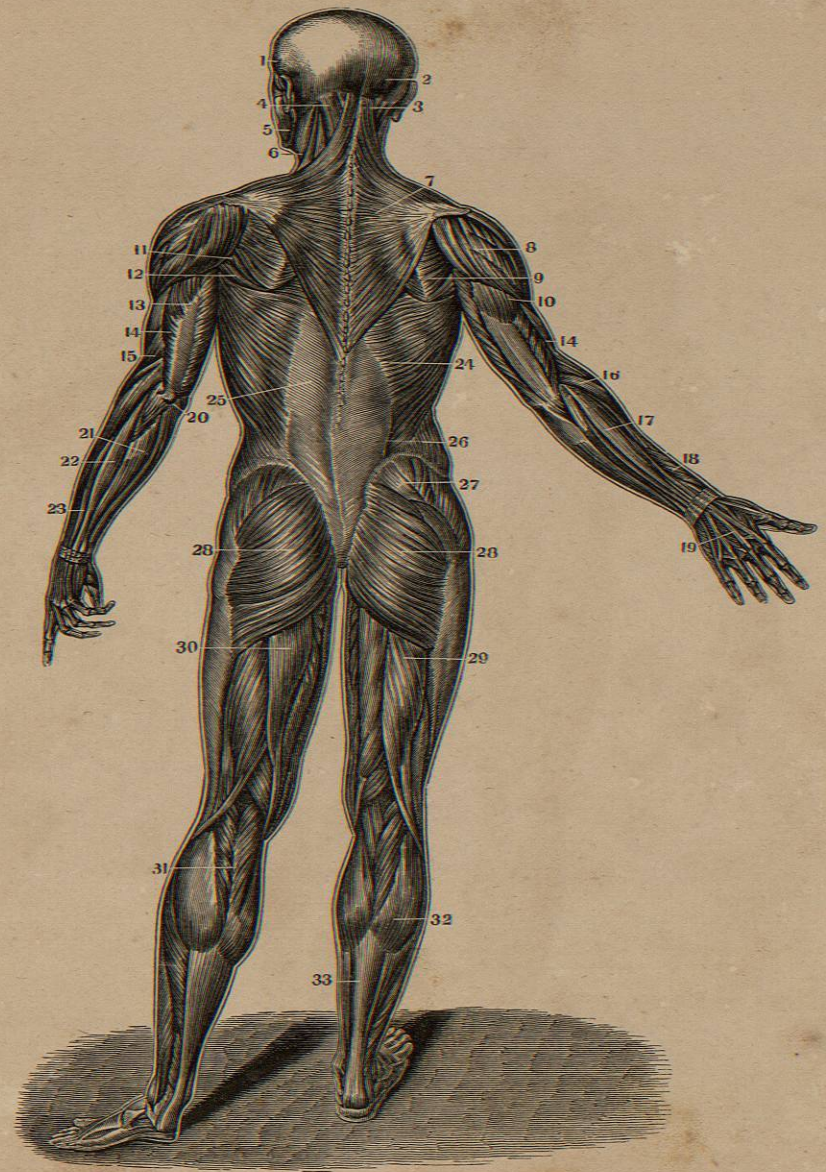


THE MUSCLES.

FIG. 129.  
ANTERIOR VIEW OF THE  
MUSCLES OF THE  
BODY.

- |   |  |  |                                       |
|---|--|--|---------------------------------------|
| 1. Frontal Bellies of the Occipito Frontalis. | 7. Orbicularis Oris.                                 | 16. Supinator Radii Longus.            | 25. Section of the Spermatic Cord.    |
| 2. Orbicularis Palpebrarum.                   | 8. Depressor Labii Inferioris.                       | 17. Pronator Radii Teres.              | 26. Psoas Magnus.                     |
| 3. Levator Labii Superioris Alaque Nasi.      | 9. Platysma Myodes.                                  | 18. Extensor Carpi Radialis Longior.   | 27. Adductor Longus.                  |
| 4. Zygomaticus Minor.                         | 10. Deltoid.   | 19. Extensor Ossis Metacarpi Pollicis. | 28. Sartorius.                        |
| 5. Zygomaticus Major.                         | 11. Pectoralis Major.                                | 20. Annular Ligament.                  | 29. Rectus Femoris.                   |
| 6. Masseter.                                  | 12. Axillary portion of the Latissimus Dorsi.        | 21. Palmar Fascia.                     | 30. Vastus Externus.                  |
|   | 13. Serratus Major Anticus.                          | 22. Obliquus Externus Abdominis.       | 31. Vastus Internus.                  |
|   | 14. Biceps Flexor Cubiti.                            | 23. Linea Alba.                        | 32. Tendon Patellæ.                   |
|   | 15. Anterior portion of the Triceps Extensor Cubiti. | 24. Tensor Vaginæ Femoris.             | 33. Gastrocnemius.                    |
|   |  |  | 34. Tibialis Anticus.                 |
|   |  |  | 35. Tibia.                            |
|   |  |  | 36. Tendons of the Extensor Communis. |

FIG. 130.



THE MUSCLES.

FIG. 130.  
 POS-TERIOR VIEW OF THE  
 MUSCLES OF THE BODY.  
 1. Temporalis.  
 2. Occipital portion of the  
 Occipito Frontalis.  
 3. Complexus.  
 4. Splenius.  
 5. Masseter.  
 6. Sterno - Cleido Mastoi-  
 deus.

7. Trapezius.  
 8. Deltoid.  
 9. Infra-Spinatus.  
 10. Triceps Extensor.  
 11. Teres Minor.  
 12. Teres Major.  
 13. Tendinous portion of  
 the Triceps.  
 14. Anterior Edge of the  
 Triceps.  
 15. Supinator Radii Lon-  
 gus.

16. Pronator Radii Teres.  
 17. Extensor Communis  
 Digitorum.  
 18. Extensor Ossis Meta-  
 carpi Pollicis.  
 19. Extensor Communis  
 Digitorum Tendons.  
 20. Olecranon and Inser-  
 tion of the Triceps.  
 21. Extensor Carpi Ulna-  
 ris.  
 22. Auricularis.

23. Extensor Communis.  
 24. Latissimus Dorsi.  
 25. Its Tendinous Origin.  
 26. Posterior part of the  
 Obliquus Externus.  
 27. Gluteus Medius.  
 28. Gluteus Magnus.  
 29. Biceps Flexor Cruris.  
 30. Semi-Tendinosus.  
 31. Gastrocnemius.  
 32. Tendo Achillis.  
 33.

FIG. 131.

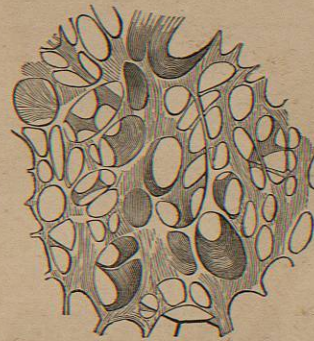


FIG. 133.

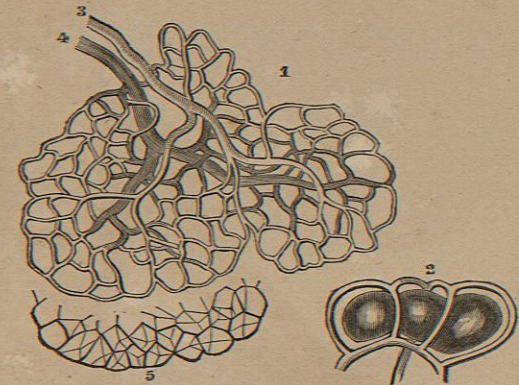


FIG. 132.

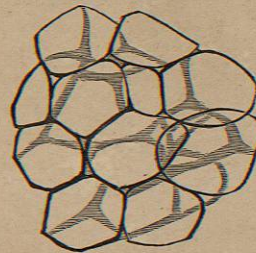
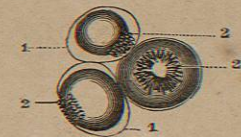


FIG. 134.



THE CELLULAR AND ADIPOSE TISSUES.

FIG. 131.

A VIEW OF A PORTION OF AREOLAR OR CELLULAR TISSUE, INFLATED AND DRIED, SHOWING THE GENERAL CHARACTER OF ITS LARGER MESHES; MAGNIFIED TWENTY DIAMETERS.

FIG. 133.

THE BLOOD-VESSELS OF FAT, MAGNIFIED 100 DIAMETERS.

- 1. Minute flattened Fat Lobules, in which the Vessels only are represented.
- 2. Plan of the arrangement of the Capillaries of the exterior of the Vesicles, more highly magnified.
- 3. The Terminal Artery.
- 4. The Primitive Vein.
- 5. The Fat Vesicles of one border of the Lobule separately represented.

FIG. 132.

FAT VESICLES FROM THE OMENTUM, MAGNIFIED ABOUT 300 DIAMETERS, AND ASSUMING THE POLYPHEDRAL FORM, FROM PRESSURE AGAINST ONE ANOTHER. THE CAPILLARY VESSELS ARE NOT REPRESENTED.

FIG. 134.

FAT VESICLES FROM AN EMACIATED SUBJECT.

- 1.1. The Cell Membrane.
- 2.2.2. The solid portion collected as a star-like mass, with the Elaine in connexion with it, but not filling the Cell.