

FIG. 400.

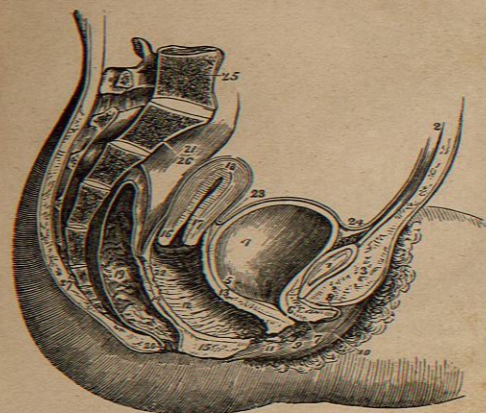


FIG. 401.

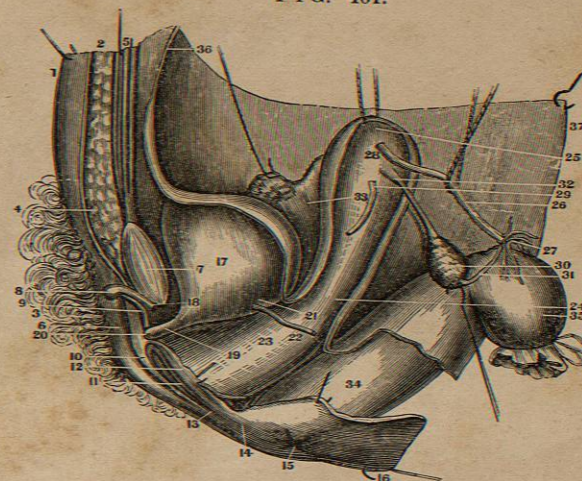
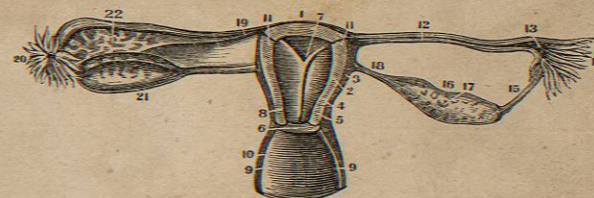


FIG. 402.



FEMALE ORGANS OF GENERATION.

FIG. 400.

A SIDE VIEW OF THE VISCERA OF THE FEMALE PELVIS.

1. Symphysis Pubis.
2. Abdominal Parietes.
3. The Fat forming the Mons Veneris.
4. The Bladder.
5. Entrance of the Left Ureter.
6. Canal of the Urethra.
7. Meatus Urinarius.
8. The Clitoris and its Prepuce.
9. Left Nympha.
10. Left Labium Majus.
11. Orifice of the Vagina.
12. Its Canal and Transverse Rugæ.
13. The Vesico - Vaginal Septum.
14. The Vagino - Rectal Septum.
15. Section of the Perineum.
16. Os Uteri.
17. Cervix Uteri.
18. Fundus Uteri.
19. The Rectum.
20. The Anus.
21. Upper Portion of the Rectum.
22. Recto-Uterine Fold of the Peritoneum.
23. Utero Vesical Reflection of the Peritoneum.
24. The Peritoneum reflected on the Bladder from the Abdominal Parietes.
25. Last Lumbar Vertebra.
26. The Sacrum.
27. The Coccyx.

FIG. 401.

A VERTICAL SECTION THROUGH THE LINEA ALBA AND SYMPHYSIS PUBIS SO AS TO SHOW THE BLADDER, VAGINA, UTERUS AND RECTUM IN SITU.— THE PERITONEUM HAS BEEN CUT AT THE POINTS WHERE IT IS REFLECTED.

1. Anterior Parietes of the Abdomen.
2. Sub-Cutaneous Cellular Tissue.
3. Hairs on the Mons Veneris.
4. Cellular Tissue on the Mons Veneris.
5. Rectus Abdominis of the Right Side.
6. Right Labia Majora.
7. Symphysis Pubis.
8. The Clitoris.
9. Its opposite Crus.
10. Right Labia Minora.
11. Orifice of the Vagina.
12. Portion of the Left Labia Minora.
13. The Fourchette, or Posterior Commissure of the Vulva.
14. The Perineum.
15. The Anus.
16. A Portion of the Integuments of the Buttock.
17. Left Side of the Bladder.
18. Neck of the Bladder.
19. The Urethra.
20. Meatus Urinarius.

21. Entrance of the Left Ureter into the Bladder.
22. Left Ureter cut off.
23. Left Side of the Vagina.
24. Left Side of the Neck of the Uterus outside of the Vagina.
25. Fundus of the Uterus.
26. Left Fallopian Tube separated from the Peritoneum.
27. Its Fimbriated Extremity.
28. Its Entrance into the Uterus.
29. Left Round Ligament.
30. Left Ovary.
31. Fimbriated Portion which unites the Tube to the Ovary.
32. Insertion of the Ligament of the Ovary to the Uterus.
33. Right Broad Ligament of the Uterus.
34. Lower Portion of the Rectum.
35. Rectum turned off and tied.
36. The Peritoneum lining the Anterior Parietes of the Abdomen.
37. The Peritoneum which covers the Posterior Parietes of the Abdomen.

TUBE AND OVARY IS DIVIDED VERTICALLY; THE OTHER SIDE IS UNTOUCHED. THE ANTERIOR PORTION OF THE UTERUS AND VAGINA HAVE ALSO BEEN REMOVED.

1. Fundus of the Uterus.
2. Thickness of its Parietes anteriorly.
3. External Surface of the Uterus.
4. Section of the Neck of the Uterus.
5. Section of the Anterior Lip.
6. Its Posterior Lip untouched.
7. Cavity of the Uterus.
8. Cavity of its Neck.
9. Thickness of the Walls of the Vagina.
10. Its Cavity and Posterior Parietes.
11. Openings of Fallopian Tubes into the Uterus.
12. Cavity of the Left Tube.
13. Its Pavilion.
14. Corpus Fimbriatum.
15. Its Union with the Ovary.
16. Left Ovary vertically divided.
17. The Vesicles in its Tissue.
18. Ligament of the Ovary.
19. Right Fallopian Tube, untouched.
20. Its Corpus Fimbriatum.
21. Right Ovary.
22. The Broad Ligament.

FIG. 402.

THE UTERUS, FALLOPIAN TUBES, OVARIES AND A PART OF THE VAGINA OF A FEMALE OF SIXTEEN YEARS. ON ONE SIDE THE

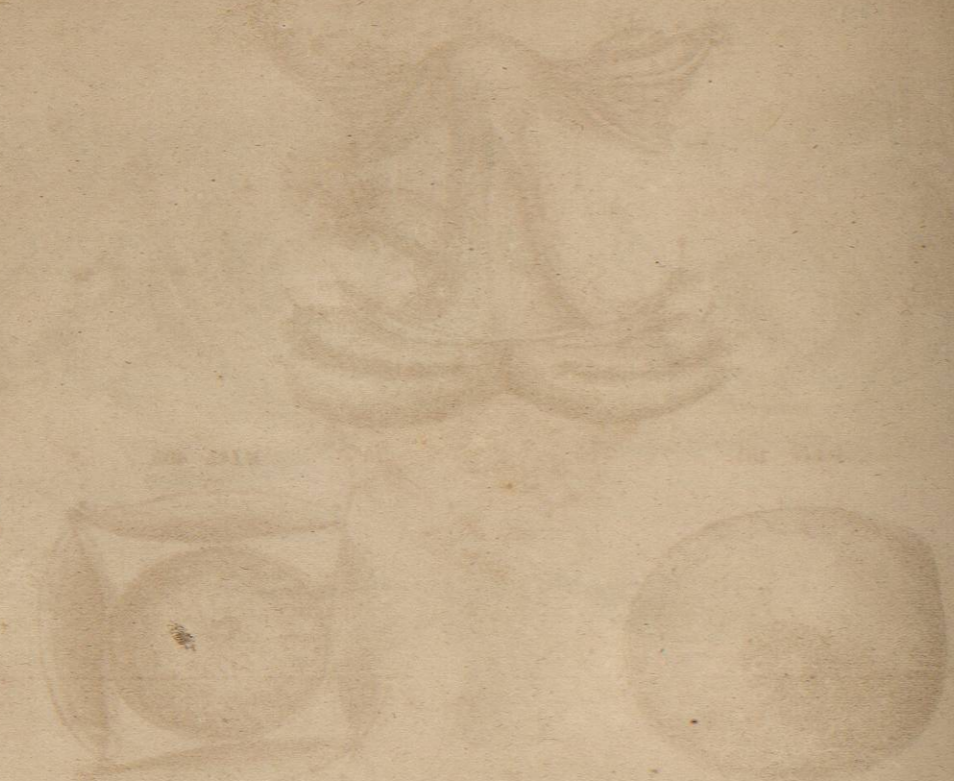


FIG. 403.

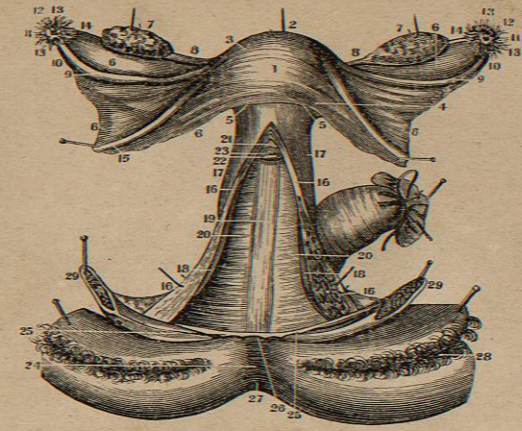


FIG. 404.

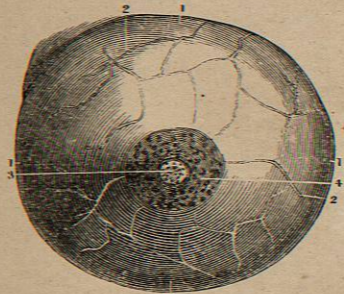
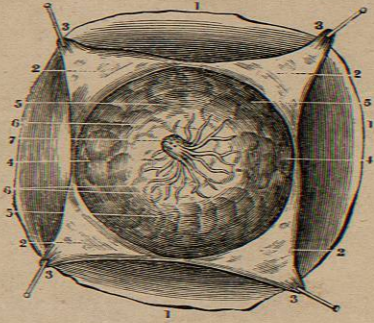


FIG. 405.



FEMALE ORGANS OF GENERATION.

FIG. 403.

A VIEW OF THE UTERUS, OVARIES, FALLOPIAN TUBES, ROUND LIGAMENTS, VAGINA AND A PORTION OF THE EXTERNAL PARTS OF THE FEMALE.

- 1. Anterior Face of the Uterus covered by the Peritoneum.
- 2. Its Fundus.
- 3. One of its Superior Lateral Angles near the Origin of the Fallopian Tubes.
- 4. Sides of the Uterus.
- 5. Its Neck embraced by the Upper End of the Vagina.
- 6. Portion of the Broad Ligaments.
- 7. The Ovaries drawn up by Hooks above their natural position.
- 8. The Ligaments which unite the Ovaries to the Uterus.
- 9. Fallopian Tubes.
- 10. The Enlargement near their Extremities.
- 11. Their Trumpet-shaped Mouths.
- 12. The Pavilion.
- 13. Corpus Fimbriatum.
- 14. A Portion of the Fimbriated Processes running to the Ovary.
- 15. Section of the Round Ligaments.
- 16. A Longitudinal Section of the Vagina.
- 17. Portion of the External Surface of the Vagina.
- 18. A Portion of its Internal Anterior Parietes.
- 19. Longitudinal Lines forming a sort of Raphe on its Posterior Part.
- 20. Transverse Wrinkles or Folds.
- 21. Anterior Lip of the Os Uteri.
- 22. Its Posterior Lip.
- 23. Os Externum.

- 24. Perineum.
 - 25. Caruncula Myrtiformes drawn out.
 - 26. Posterior Commissure of the Vulva forcibly drawn out.
 - 27. The Anus.
 - 28. Labia Majora everted.
 - 29. The two Halves of the Clitoris and the Labia Minora forcibly separated.
- The Rectum, cut off and tied, is seen behind, and the Bladder and other parts have been removed in front.

FIG. 404.

A FRONT VIEW OF THE MAMMARY GLAND OF A FEMALE RECENTLY DELIVERED.

- 1.1. Circumference of the Gland.
- 2.2. The Sub-Cutaneous Veins as seen through the Skin.
- 3.3. The Nipple pierced by the Lactiferous Tubes.
- 4. The Areola.

FIG. 405.

THE MAMMARY GLAND AFTER THE REMOVAL OF THE SKIN, AS TAKEN FROM THE SUBJECT THREE DAYS AFTER DELIVERY.

- 1. The Surface of the Chest.
- 2. Sub-Cutaneous Fat.
- 3. The Skin covering the Gland.
- 4. Circumference of the Gland.
- 5. Its Lobules separated by Fat.
- 6. The Lactiferous Ducts converging to unite in the Nipple.
- 7. The Nipple slightly raised and showing the openings of the Tubes at its Extremity.

FIG. 406.



FIG. 407.



FIG. 408.

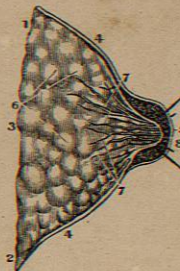
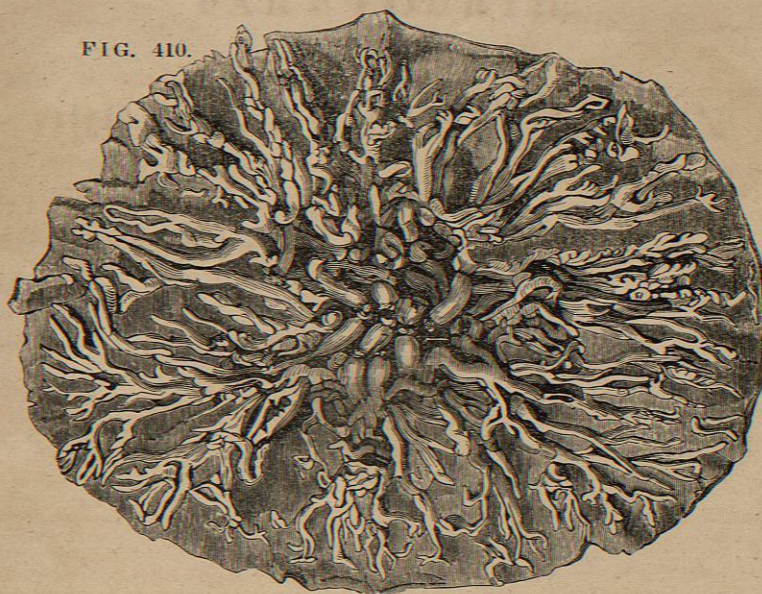


FIG. 409.

FIG. 410.



THE LACTIFEROUS GLANDS.

FIG. 406.
A SIDE VIEW OF THE GLAND AS BEFORE SHOWN IN FIG. 404.

FIG. 407.
A VERTICAL SECTION OF THE MAMMARY GLAND, SHOWING ITS THICKNESS AND THE ORIGINS OF THE LACTIFEROUS DUCTS.

- 1.2.3. Its Pectoral Surface.
- 4. Section of the Skin on the Surface of the Gland.
- 5. The thin Skin covering the Nipple.
- 6. The Lobules and Lobes composing the Gland.

- 7. The Lactiferous Tubes coming from the Lobules.
- 8. The same Tubes collected in the Nipple.

FIG. 408.
A PREPARATION OF THE LACTIFEROUS TUBES, DURING LACTATION.

- 1.2. Top and Base of the Nipple.
- 3. Lactiferous Tubes in the Natural State.
- 4. Two in the Nipple which are injected.
- 5. These Tubes dilated and forming a kind of Sinus at the Base of the Nipple.

- 6. The Roots of the Lactiferous Ducts.
- 7. Lobules of the Gland.
- 8. The Orifices of the prepared Tubes.

FIG. 409.
TERMINATION OF A PORTION OF A LACTIFEROUS DUCT IN THE CELLS OF THE LOBULES, FROM A MERCURIAL INJECTION BY SIR A. COOPER; ENLARGED FOUR TIMES.

FIG. 410.
THE DISTRIBUTION OF THE LACTIFEROUS DUCTS DURING LACTATION; INJECTED WITH WAX, (AFTER SIR A. COOPER).