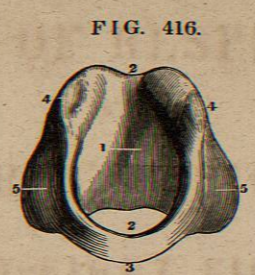
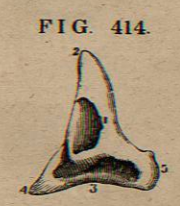
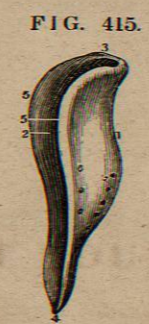
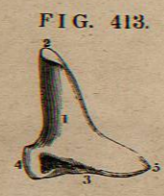
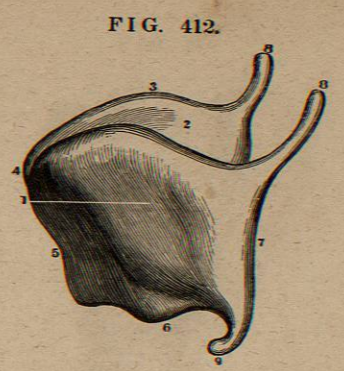
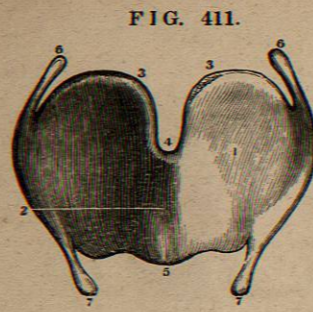
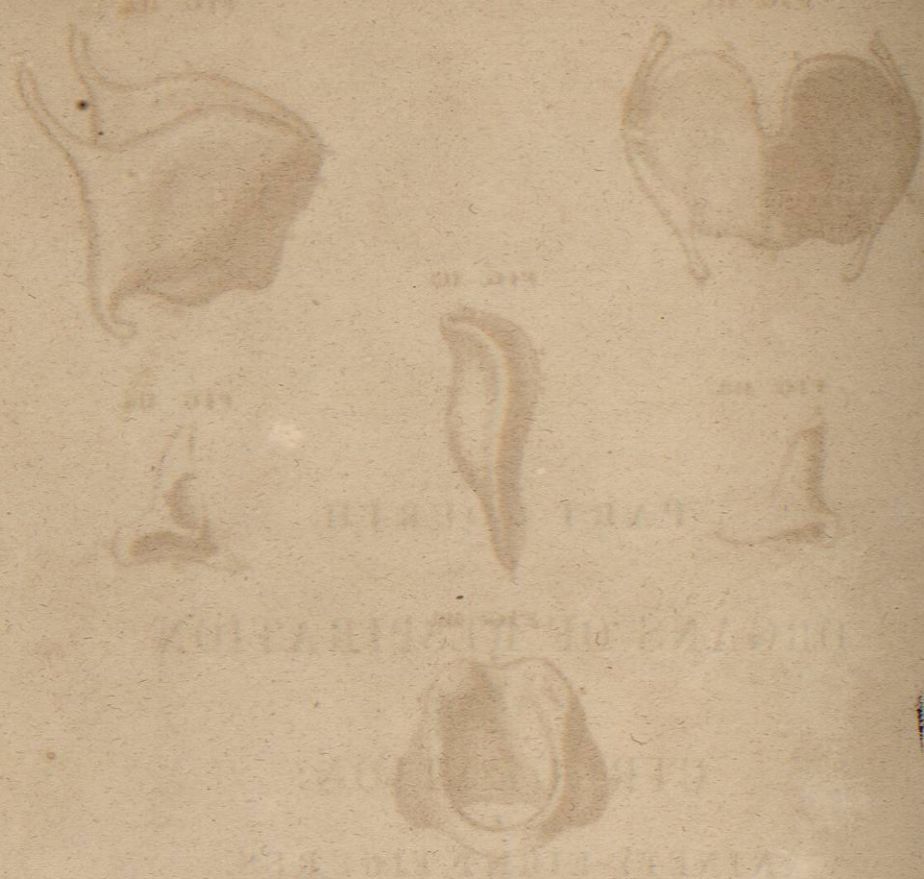


PART FOURTH.
ORGANS OF RESPIRATION
AND
CIRCULATION:
NINETY-EIGHT FIGURES.

PART FOURTH.
ORGANS OF RESPIRATION
AND
CIRCULATION:
NINETY-EIGHT FIGURES.



THE LARYNX.

FIG. 411.
A FRONT VIEW OF THE THYROID CARTILAGE.
 1. Left Half of the Cartilage.
 2. Anterior projecting Angle.
 3. Superior Margin.
 4. Its Notch.
 5. Inferior Margin.
 6.6. Cornu Majus of each Half.
 7.7. Cornu Minus of each Half.

FIG. 412.
A LATERAL VIEW OF THE THYROID CARTILAGE.
 1. Its Left Half.
 2. Its Right Half.
 3. The Superior Margin.
 4. The Notch.
 5. Anterior Angle.
 6. Inferior Margin.
 7. Posterior Margin.
 8.8. Cornu Majus of each Side.
 9. Cornu Minus.

FIG. 413.
A POSTERIOR VIEW OF THE LEFT ARYTENOID CARTILAGES.
 1. Its Posterior Face.
 2. The Summit.
 3. The Base and Cavity for Articulating with the Cricoid Cartilage.

4. Its External Angle.
 5. Its Internal Angle.

FIG. 414.
AN ANTERIOR VIEW OF THE LEFT ARYTENOID CARTILAGES.
 1. Its Anterior Face.
 The other References as in Fig. 413.

FIG. 415.
A LATERAL VIEW OF THE EPIGLOTTIS CARTILAGE.
 1. Anterior or Convex Surface.
 2. Posterior or Concave Surface.
 3. Superior Margin.
 4. Inferior Margin or Pedicle.
 5. Its Sides. The Openings of the Muciparous Ducts are also shown.

FIG. 416.
A FRONT VIEW OF THE CRICOID CARTILAGE.
 1. Its Internal Face.
 2. The Cavity of the Larynx as formed by this Cartilage.
 3. Its Inferior Surface.
 4. The little Head or Convexity for Articulating with the Arytenoids.
 5. The Surface of the Superior Edge for the Attachment of the Lateral Crico Arytenoid Muscles.

FIG. 417.

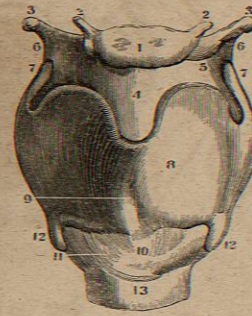


FIG. 418.

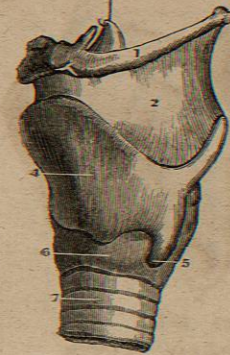
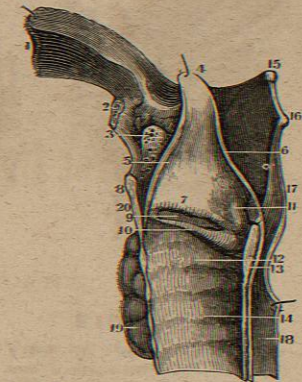


FIG. 419.



FIG. 420.



THE LARYNX.

FIG. 417.

A FRONT VIEW OF THE LIGAMENTS OF THE LARYNX.

1. Body of the Os Hyoides.
2. Its Appendices.
3. Its Cornua.
- 4.5. Thyreo-Hyoid Ligament.
6. Lateral Thyreo-Hyoid Ligament.
7. Cornu Majus of each Half of the Thyroid Cartilage.
8. Sides of the Thyroid Cartilage.
9. Its Projecting Angle.
- 10.11. Crico-Thyroid Ligament.
12. Cornu Minus of each Side of the Thyroid Cartilage.
13. First Ring of the Trachea.

FIG. 418.

A LATERAL VIEW OF THE SAME.

1. Os Hyoides.
2. Thyreo-Hyoid Ligament.
3. Cornu Majus of the Thyroid Cartilage.
4. Its Angle and Side.
5. Cornu Minus.
6. Lateral Portion of the Cricoid Cartilage.
7. Rings of the Trachea.

FIG. 419.

A FRONT VIEW OF THE THYROID GLAND IN SITU.

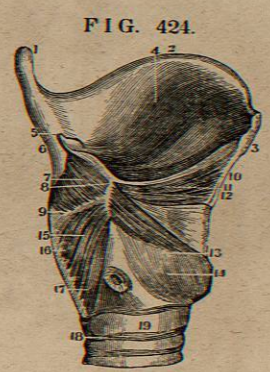
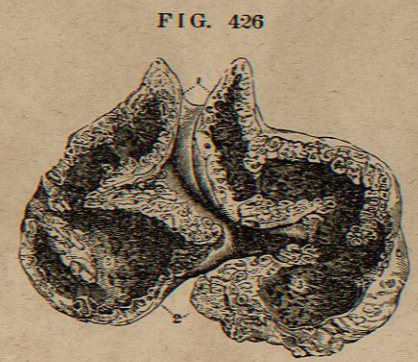
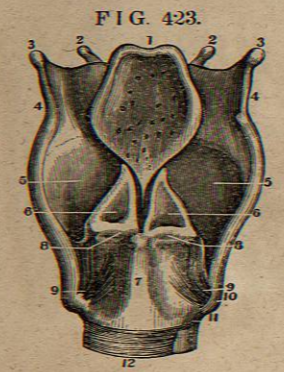
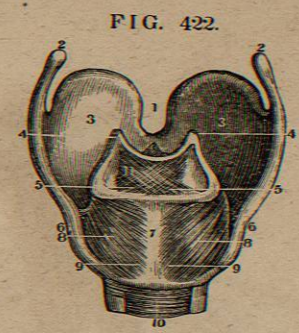
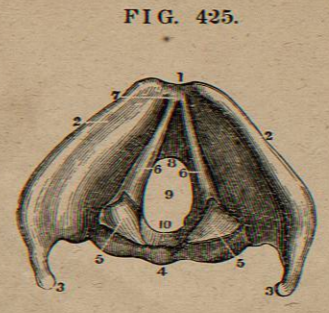
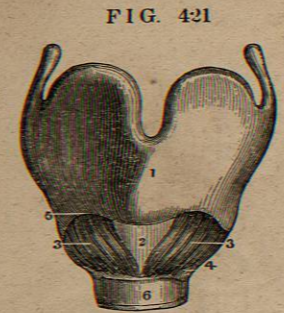
1. Os Hyoides.

2. Thyreo-Hyoid Ligament.
3. Thyroid Cartilage.
4. Crico-Thyroid Ligament.
5. Cricoid Cartilage.
6. Thyroid Gland.
7. Trachea.

FIG. 420.

A VERTICAL SECTION OF THE LARYNX TO SHOW ITS INTERNAL SURFACE.

1. Section of the Root of the Tongue.
2. Os Hyoides.
3. The Muciparous Gland of the Epiglottis.
4. Top of the Epiglottis Cartilage.
5. A Section of its Anterior Face.
6. A Fold of Mucous Membrane from the Arytenoids to the Epiglottis.
7. Superior Vocal Ligament.
8. Section of Thyroid Cartilage.
9. Ventricle of Galen or Morgagni.
10. Lower Vocal Ligament.
11. Arytenoid Cartilages.
12. Inside of the Cricoid Cartilage.
13. Its Posterior Portion.
14. Lining Membranes of the Trachea.
15. End of the Cornu Majus of the Os Hyoides.
16. Cornu Majus of the Thyroid Cartilage.
17. Mucous Membrane of the Pharynx.
18. Oesophagus.
19. Thyroid Gland.



THE LARYNX AND THYMUS GLAND.

FIG. 421.
A FRONT VIEW OF THE CRICO-THYROID MUSCLES.
 1. Thyroid Cartilage.
 2. Crico-Thyroid Ligament.
 3. Right Crico-Thyroid Muscle.
 4. Its Origin.
 5. Its Insertion.
 6. First Ring of the Trachea.

FIG. 422.
A POSTERIOR VIEW OF THE ARYTENOID AND CRICO-ARYTENOID MUSCLES.
 1.2.3. Thyroid Cartilage.
 4. Summit of the Arytenoid Cartilages.
 5. Insertion of Arytenoid Muscles.
 6. Cricoid Cartilage.
 7. Its Middle Portion.
 8.9. Crico-Arytenoid Muscles.
 10. Posterior Portion of the Trachea.
 11. Arytenoid Muscles.

FIG. 423.
A POSTERIOR VIEW OF THE ARTICULATIONS OF THE CARTILAGES OF THE LARYNX.
 1. Posterior Face of the Epiglottis.
 2. Appendices of the Os Hyoides.
 3. Its Cornua.
 4. Lateral Thyreo-Hyoid Ligaments.

5. Posterior Face of the Thyroid Cartilage.
 6. Arytenoid Cartilages.
 7. Cricoid Cartilage.
 8. Crico-Arytenoid Articulation.
 9. Posterior Crico-Thyroid Ligament.
 10. Cornu Minus of the Thyroid Cartilage.
 11. Anterior Crico-Thyroid Ligament.
 12. Ligamentous Portion of the first Ring of the Trachea.

FIG. 424.
A VERTICAL SECTION OF THE LARYNX TO SHOW SOME OF ITS MUSCLES.
 1. Cornu Majus of the Thyroid Cartilage.
 2. Its Superior Border.
 3. Section of its Body.
 4. Its Internal Surface.
 5. Arytenoid Cartilage.
 6. Posterior Surface of the Thyroid Cartilage.
 7.8.9. Arytenoid Muscles.
 10.11.12. Thyreo-Arytenoid Muscle.
 13. Crico-Arytenoid Lateral Muscle.
 14. Cricoid Cartilage.
 15.16.17. Crico - Arytenoid Posticus.
 18.19. First Rings of the Trachea as united by Ligament.

FIG. 425.
A VIEW OF THE LARYNX FROM ABOVE, SHOWING THE THYREO-ARYTENOID OR VOCAL LIGAMENTS.
 1. Superior Edge of the Larynx.
 2. Its Anterior Face.
 3. Cornua Majores of the Thyroid Cartilage.
 4. Posterior Face of the Cricoid Cartilage.
 5.5. Arytenoid Cartilages.
 6.6. Thyreo-Arytenoid Ligam'ts.
 7. Their Origin within the Angle of the Thyroid Cartilage.
 8. Their Terminations at the Base of the Arytenoid Cartilages.
 9. The Glottis.
 10. Anterior Part of the Inferior Surface of the Cricoid Cartilage.

FIG. 426.
A SECTION OF THE THYMUS GLAND AT THE 8TH MONTH.
 1. Cervical Portion of the Gland.
 2. Secretory Cells seen upon its Surface.
 3. The Pores or Openings of the Cells and Pouches. The continuity of the Reservoir of the Lower and Cervical Portion of the Gland is also seen.

FIG. 427.

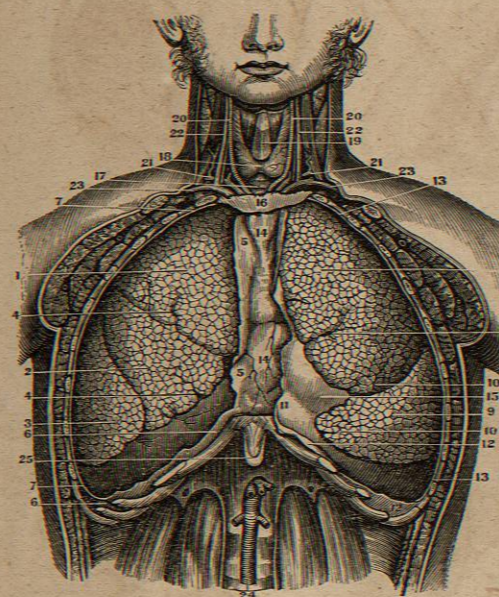
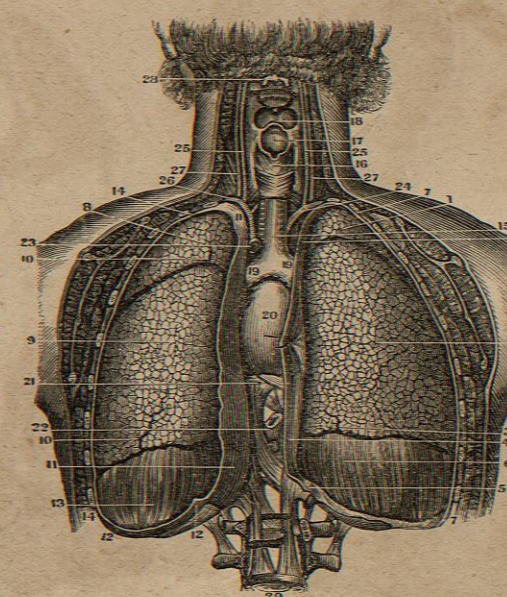


FIG. 428.



ORGANS OF RESPIRATION.

FIG. 427.

AN ANTERIOR VIEW OF THE THORACIC VISCERA IN SITU, AS SHOWN BY THE REMOVAL OF THEIR ANTERIOR PARIETES.

1. Superior Lobe of the Right Lung.
2. Its Middle Lobe.
3. Its Inferior Lobe.
- 4.4. Lobular Fissures.
- 5.5. Internal Layer of the Costal Pleura forming the Right Side of the Anterior Mediastinum.
- 6.6. The Right Diaphragmatic Portion of the Pleura Costalis.
- 7.7. The Right Pleura Costalis on the Ribs.
8. Superior Lobe of the Left Lung.
9. Its Inferior Lobe.
- 10.10. Interlobular Fissures.
11. The Portion of the Pleura Costalis which forms the Left Side of the Anterior Mediastinum.
12. The Left Diaphragmatic Portion of the Pleura Costalis.
13. Left Pleura Costalis.
- 14.14. The Middle Space between the Pleurae, known as the Anterior Mediastinum.
15. The Pericardium.
16. Fibrous Partition over which the Pleurae are reflected.
17. The Trachea.
18. Thyroid Gland.
19. Anterior Portion of the Thyroid Cartilage.
20. Primitive Carotid Artery.
21. Subclavian Vein.
22. Internal Jugular Vein.
23. Brachio-Cephalic Vein.
24. Abdominal Aorta.
25. Xyphoid Cartilage.

FIG. 428.

A POSTERIOR VIEW OF THE THORACIC VISCERA, SHOWING THEIR RELATIVE POSITIONS BY THE REMOVAL OF THE POSTERIOR PORTION OF THEIR PARIETES.

- 1.2. Upper and Lower Lobes of the Right Lung.
3. Interlobular Fissures.
4. Internal Portion of the Pleura Costalis, forming one of the Sides of the Posterior Mediastinum.
5. Twelfth Rib and Lesser Diaphragm.
6. Reflection of the Pleura over the Greater Muscle of the Diaphragm on the Right Side.
- 7.7. Right Pleura Costalis adhering to the Ribs.
- 8.9. The two Lobes of the Left Lung.
- 10.10. Interlobular Fissures.
- 11.11. The Left Pleura, forming the Parietes of the Posterior Mediastinum.
- 12.13. Its Reflections over the Diaphragm on this side.
- 14.14. The Left Pleura Costalis on the Parietes of the Chest.
15. The Trachea.
16. The Larynx.
17. Opening of the Larynx and the Epiglottis Cartilage in Situ.
18. Root and Top of the Tongue.
- 19.19. Right and Left Bronchia.
20. The Heart enclosed in the Pericardium.
21. Upper Portion of the Diaphragm on which it rests.
22. Section of the Oesophagus.
23. Section of the Aorta.
24. Arteria Innominata.
25. Primitive Carotid Arteries.
26. The Subclavian Arteries.
27. Internal Jugular Veins.
28. Second Cervical Vertebra.
29. Fourth Lumbar.



FIG. 429.

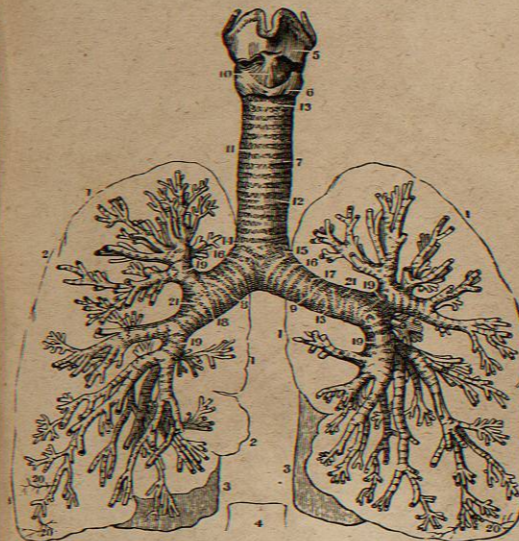
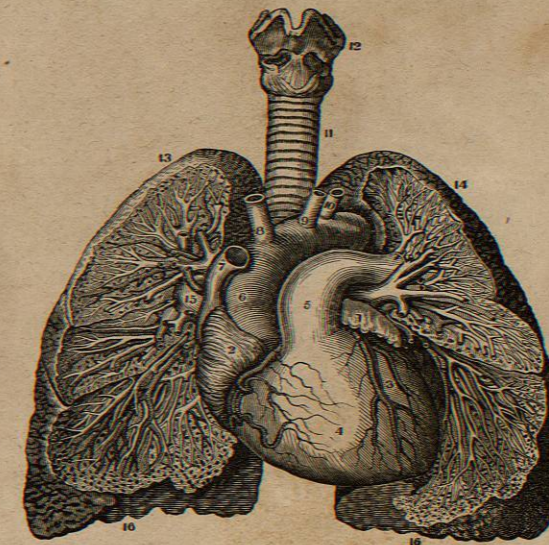


FIG. 430.



ORGANS OF RESPIRATION.

FIG. 429.

THE LARYNX, TRACHEA AND BRONCHIE, DEPRIVED OF THEIR FIBROUS COVERING, AND WITH THE OUTLINE OF THE LUNGS.

- 1.1. Outline of the Upper Lobes of the Lungs.
- 2. Outline of the Middle Lobe of the Right Lung.
- 3.3. Outline of the Inferior Lobes of both Lungs.
- 4. Outline of the 9th Dorsal Vertebra, showing its relation to the Lungs and the Vertebral Column.
- 5. Thyroid Cartilage.
- 6. Cricoid Cartilage.
- 7. Trachea.
- 8. Right Bronchus.
- 9. Left Bronchus.
- 10. Crico-Thyroid Ligament.
- 11.12. Rings of the Trachea.
- 13. First Ring of the Trachea.
- 14. Last Ring of the Trachea, which is Corset-shaped.
- 15.16. A complete Bronchial Cartilaginous Ring.
- 17. One which is Bifurcated.
- 18. Double Bifurcated Bronchial Rings.
- 19.19. Smaller Bronchial Rings.
- 20. Depressions for the Course of the large Blood-Vessels.

FIG. 430.

A VIEW OF THE BRONCHIE AND BLOOD-VESSELS OF THE LUNGS AS SHOWN BY DISSECTION, AS WELL AS THE RELATIVE POSITION OF THE LUNGS TO THE HEART.

- 1. End of the Left Auricle of the Heart.
- 2. The Right Auricle.
- 3. The Left Ventricle with its Vessels.
- 4. The Right Ventricle with its Vessels.
- 5. The Pulmonary Artery.
- 6. Arch of the Aorta.
- 7. Superior Vena Cava.
- 8. Arteria Innominata.
- 9. Left Primitive Carotid Artery.
- 10. Left Sub-Clavian Artery.
- 11. The Trachea.
- 12. The Larynx.
- 13. Upper Lobe of the Right Lung.
- 14. Upper Lobe of the Left Lung.
- 15. Trunk of the Right Pulmonary Artery.
- 16. Lower Lobes of the Lungs.

The Distribution of the Bronchia and of the Arteries and Veins, as well as some of the Air-Cells of the Lungs, are also shown in this dissection.