



FIG. 450.

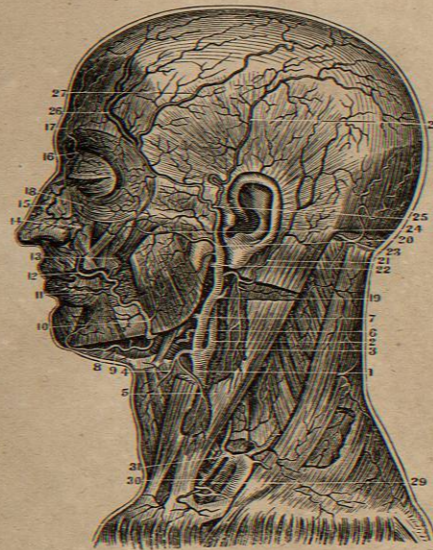
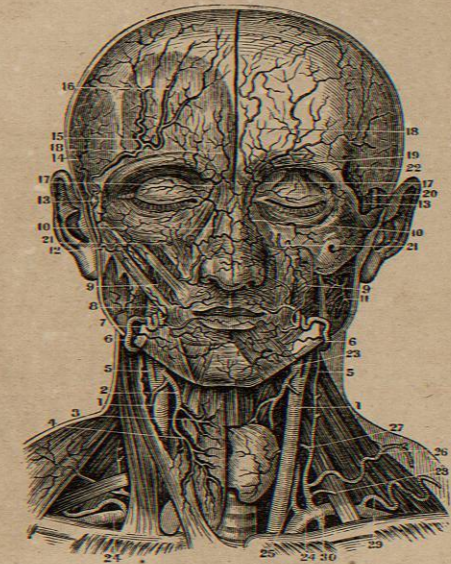


FIG. 451.



THE CAROTID ARTERY AND ITS BRANCH.

FIG. 450.

A VIEW OF THE EXTERNAL CAROTID ARTERY AND ITS BRANCHES.

1. Left Primitive Carotid Artery, seen through a Section of the Sterno-Cleido Mastoid Muscle.
2. Internal Carotid Artery.
3. External Carotid Artery.
4. Superior Thyroid Artery.
5. A Branch to the Sterno-Cleido Muscle.
6. Lingual Artery.
7. Origin of the Facial Artery.
8. Sub-Mental Branch.
9. Branch to the Sub-Maxillary Gland.
10. Facial Artery passing over the Jaw.
11. Inferior Coronary Artery.
12. Superior Coronary.
13. Branch to anastomose with the Infra-Orbital.
14. Branch to the Alæ Nasi.
15. Anastomosis of Facial with Ophthalmic.
16. Nasal Branch of Ophthalmic.
17. Its Frontal Branch.
18. Branch to the Orbicularis Palpebrarum Muscle.
19. Origin of the Occipital Artery.
20. Point where it passes under the Splenius Muscle.
21. Posterior Auricular Artery.
22. Origin of the Internal Maxillary.
23. Temporal Artery.
24. Transverse Facial.
25. Point of Division of the Temporal Artery.
26. Anterior Temporal Artery.
27. Middle Temporal Artery.
28. Posterior Temporal Artery.
29. Internal Mammary Artery.
30. Inferior Thyroid Artery.
31. Transversalis Cervicis Artery.

FIG. 451.

A FRONT VIEW OF THE ARTERIES OF THE HEAD AND NECK.

1. Primitive Carotid Artery.
2. Superior Thyroid Artery.
3. Its Muscular Branches.
4. Its Main Branch to the Gland.
5. External Carotid Artery.
6. Facial Artery passing over the Jaw.
7. Inferior Coronary Artery.
8. Superior Coronary Artery.
9. Buccalis Ascendens.
10. Anastomosis of the Facial with the Ophthalmic Artery.
11. Branches of the External Carotid to the Masseter Muscle.
12. Temporal Artery where it divides.
13. Anterior Temporal Artery.
14. } Its principal Branches.
15. }
16. }
17. Nasal Branch of the Ophthalmic Artery.
18. A Branch to the Forehead.
19. Supra-Orbital Artery.
20. Temporal Artery.
21. Infra-Orbital Artery.
22. Deep Temporal Artery.
23. Anterior Cervical Artery.
24. Sub-Clavian Artery.
25. Vertebral Artery.
26. Transverse Cervical.
27. Inferior Thyroid Artery.
28. Anterior Cervical.
29. Superior Scapular.
30. Internal Mammary.

FIG. 454.



FIG. 453.

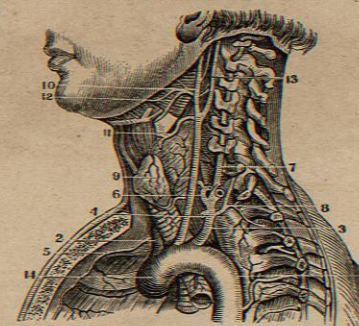
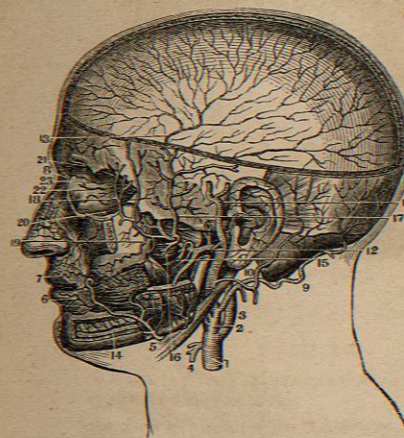


FIG. 452.



THE CAROTID AND SUBCLAVIAN ARTERIES.

FIG. 452.
A VIEW OF THE INTERNAL MAXILLARY ARTERY, AS GIVEN BY SECTIONS OF THE BONES OF THE HEAD AND FACE.

1. Primitive Carotid Artery.
2. External Carotid.
3. Internal Carotid.
4. Section of the Superior Thyroid Artery.
5. Point where the Facial Artery crosses the Lower Jaw.
6. Inferior Coronary Artery.
7. Superior Coronary Artery.
8. Point of anastomosis of Facial with the Nasal Branch of Ophthalmic.
9. The Occipital Artery.
10. Posterior Auricular.
11. Temporal Artery.
12. Origin of the Internal Maxillary Artery.
13. Meningea Magna of the Dura Mater ramifying over its Surface.
14. Inferior Dental Artery in the Alveolar Processes of the Lower Jaw.
15. The Pterygoid Arteries.
16. The Masseter Arteries.
17. Deep-seated Posterior Temporal Artery.

18. Deep-seated Anterior Temporal Artery.
19. Buccal Arteries.
20. Infra-Orbital.
21. Posterior Palatine.
22. Origin of the Pterygoid Artery.
23. Origin of the Spheno-Palatine.

- a common Trunk with the Facial.
13. Internal Carotid.
 14. Origin of the Aorta.

FIG. 453.
A VIEW OF THE VERTEBRAL ARTERY, CAROTID AND ARCH OF THE AORTA, AS GIVEN BY A VERTICAL SECTION OF THE NECK.

1. Commencement of the Thoracic Aorta.
2. The Innominate at its Origin.
3. The Left Sub-Clavian.
4. The Internal Mammary Artery.
5. The Artery of the Right Side.
6. The Inferior Thyroid.
7. The Vertebral in the Transverse Processes of the Cervical Vertebrae.
8. Superior Inter-Costal Artery.
9. Left Primitive Carotid.
10. External Carotid Artery.
11. Superior Thyroid.
12. The Lingual, which has here

FIG. 454.
THE AXILLARY AND BRACHIAL ARTERIES WITH THEIR BRANCHES.

1. The Deltoid Muscle.
2. The Biceps.
3. The Tendinous Process from the Tendon of the Biceps.
4. Brachialis Internus Muscle.
5. The Supinator Longus.
6. The Coraco-Brachialis.
7. The Middle Portion of the Triceps Muscle.
8. Its Inner Head.
9. The Axillary Artery.
10. The Brachial Artery.
11. The Thoracica Acromialis Artery.
12. The Superior and Inferior Thoracic Arteries.
13. The Serratus Magnus Muscle.
14. The Subscapular Artery.
15. The Profunda Major Artery.
16. The Profunda Minor.
17. The Anastomotica.
18. The Profunda Major inosculating with the Radial Recurrent Artery.

FIG. 455.

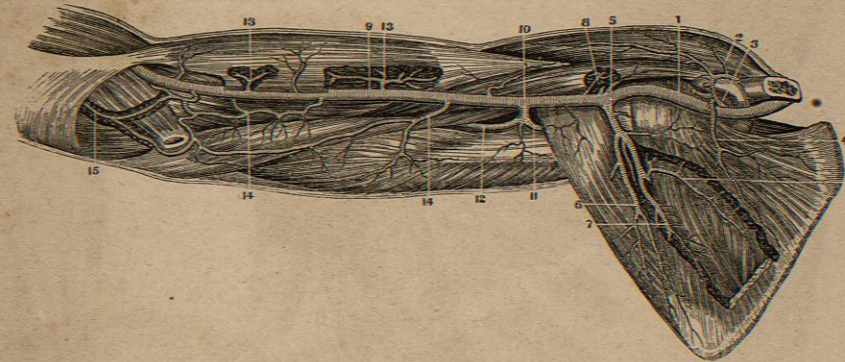


FIG. 456.

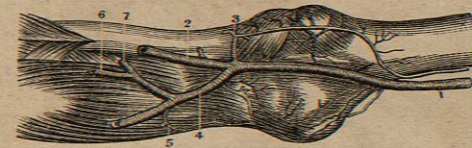
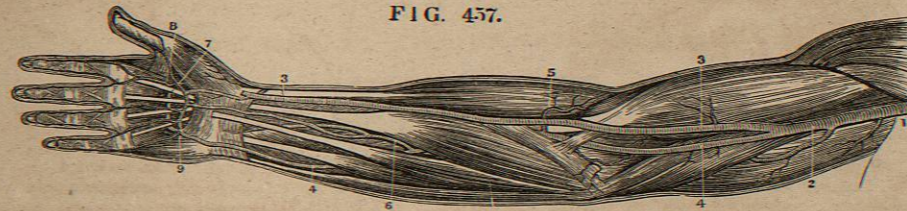


FIG. 457.



THE AXILLARY AND BRACHIAL ARTERIES.

FIG. 455.

A VIEW OF THE ARTERIES ON THE ANTERIOR PORTION OF THE ARM AND SHOULDER.

1. Axillary Artery.
2. Thoracica Acromialis Artery.
3. Thoracica Superior.
4. Sub-Scapularis Branch.
5. Inferior Scapulae.
- 6.7. Branches to the Teres and Sub-Scapularis Muscles.
8. Anterior Circumflex.
9. Brachial Artery.
10. Profunda Major Humeri.
11. Posterior Circumflex.
12. Main Trunk of the Profunda Major.
13. Muscular Branches of the Brachial to the Biceps Muscle.
14. Branches to the Brachialis Internus.
15. Recurrens Ulnaris anastomosing with the Anastomota of the Brachial.

2. The Radial Artery.
3. Recurrens Radialis.
4. The Ulnar Artery.
5. Recurrens Ulnaris.
6. Interosseus Anterior Artery.
7. Interosseus Posterior Artery.

FIG. 457.

A VIEW OF ONE OF THE ANOMALIES IN THE ARRANGEMENT OF THE BRACHIAL ARTERY.

1. Termination of the Axillary Artery.
2. The Brachial Artery.
- 3.3. Radial Artery.
- 4.4. Ulnar Artery.
5. A Recurrent Branch.
6. Anterior Interosseus Artery.
7. Superficial Palmar Arch formed by the Ulnar Artery.
8. Deep-Seated Palmar Arch.
9. The Anastomosis of the two Arteries, much enlarged.

FIG. 456.

THE ANTERIOR SURFACE OF THE ELBOW-JOINT WITH ITS VESSELS.

1. The Brachial Artery.

FIG. 458.



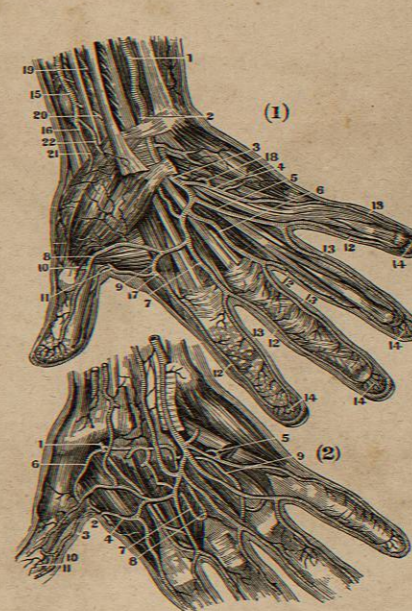
FIG. 458.
A VIEW OF THE ARTERIES OF THE LOWER PORTION OF THE SUPERIOR EXTREMITY, AS SEEN AFTER THE REMOVAL OF THE INTEGUMENTS.

1. Lower part of the Brachial Artery.
2. Arteria Anastomotica.
3. Aponeurotic Expansion of the Tendon of the Biceps.
4. Recurrens Radialis Artery.
5. Radial Artery.
6. Muscular Branches.
7. Superficialis Volæ giving off a Branch to the Arcus Sublimis.
8. The Tendons passing under the Annular Ligament of the Wrist-Joint.
9. Branch of the Superficialis Volæ on the Ball of the Thumb.
10. Points to the Palmaris Profunda.
11. Magna Pollicis Artery.
12. Radialis Indicis.
13. Cubito-Muscular Arteries.
14. Lower part of the Ulnar Artery.
15. Branches to the Palm and Muscles of the Little Finger.
16. The Arcus Sublimis.
17. Branches running to supply the Fingers.
18. The Digital Arteries.

FIG. 459.
THE ARTERIES OF THE FORE-ARM AFTER THE REMOVAL OF A PORTION OF THE MUSCLES.

1. Lower part of the Brachial Artery.

FIG. 460.



2. Inter-Muscular Aponeurosis.
3. Recurrens Radialis.
4. Division of the Brachial into the Radial and Ulnar, as usually seen.
5. Recurrens Ulnaris.
6. Ulnar Artery.
7. Radial Artery.
8. Interosseous Anterior Artery.
9. Dorsalis Carpi Artery.
10. Magna Pollicis Artery.
11. Arcus Profundus formed by the Palmaris Profundus and anastomosing with a Branch from the Arcus Sublimis.
12. The Digital Arteries.

FIG. 460.
(1.) A VIEW OF THE MINUTE DIVISIONS OF THE ARCUS SUB-LIMIS AND ITS BRANCHES.

1. The Ulnar Artery at the lower portion of the Fore-Arm.
2. Point where it passes between the Anterior Annular Ligament and the Aponeurosis Palmaris.
3. Point where it reaches the Palm of the Hand.
- 4.5. } The Digital Branches which
- 6.7. } it gives off in the Palm of the
- 8.9. } Hand.
10. Point of Anastomosis of its branch No. 8 with the branch from the Arcus Profundus.
11. The termination of the Radial Artery in sending a branch to the Thumb and Fore-Finger.

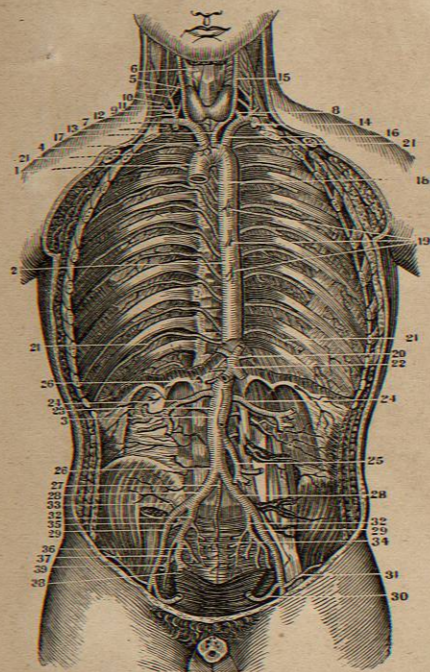
- 12.12. Digo-to-Radial Branches of the Arcus Sublimis.
- 13.13. Digo-to-Ulnar Branches of the same.
- 14.14. Anastomosis and Capillary Terminations of these Arteries in the Pulp of the Fingers.
15. The Radial Artery.
16. Point where it passes to the back and outside of the Hand under the Extensor Tendons of the Thumb.
17. Last Branch of the Radial Artery, called Radialis Indicis.
18. End of the Arcus Profundus on the Ulnar side of the Hand.
- 19.20. Superficial Muscular Branches of the Radial at the Wrist.
- 21.22. Superficialis Volæ and Branches to the Ball of the Thumb.

(2.) THE MINUTE DIVISIONS OF THE ARCUS PROFUNDUS AND ITS BRANCHES.

1. Point where the Radial comes into the Palm of the Hand.
2. Anastomosing Branch to give off.
3. A Branch on the side of the Thumb.
4. A Branch to the Fore-Finger.
5. Anastomosis of the Arcus Profundus and a Digital Branch of the Ulnar.
6. The Magna Pollicis Artery.
7. A succession of Interosseous
8. Branches which anastomose
9. with the Digital Branches of
10. the Ulnar before their bifur-
11. cations to each finger. The
12. Anastomoses are in Arches



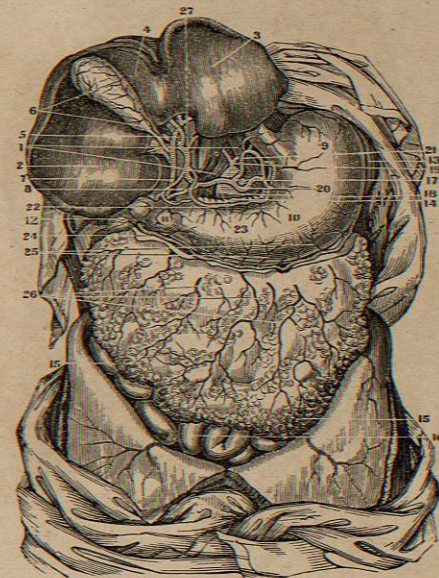
FIG. 461.



- FIG. 461.
A VIEW OF THE AORTA IN ITS WHOLE LENGTH, AND OF ITS BRANCHES, AS GIVEN BY A SECTION OF THE ANTERIOR PARTS OF THE TRUNK.
1. Commencement and Arch of the Aorta.
 2. Thoracic Aorta.
 3. Abdominal Aorta.
 4. Arteria Innominate.
 5. Right Primitive Carotid.
 6. Superior Thyroid.
 7. Right Sub-Clavian.
 8. Vertebral.
 9. Inferior Thyroid.
 10. Anterior Cervical.
 11. Transverse Cervical.
 12. Superior Scapular.
 13. Superior Intercostal.
 14. Section of Internal Mammary.
 15. Left Primitive Carotid.
 16. Left Sub-Clavian.
 17. A small Artery to the Superior Mediastinum.
 18. Some of the Upper Intercostal Arteries.

19. Oesophageal Arteries.
20. Phrenic Arteries, here coming off from the Cœliac.
21. Remains of the Diaphragm and commencement of the Cœliac Artery.
22. Tripod of Haller, or Division of the Cœliac, into Hepatic, Gastric and Splenic Arteries.
23. Superior Mesenteric, cut off.
24. Emulgent Arteries.
25. Inferior Mesenteric.
26. Division of the Aorta into Iliacs.
27. Middle Sacral—last Branch of the Aorta.
28. Primitive Iliacs.
29. External Iliacs.
30. Epigastric Artery.
31. Circumflex Ilii.
32. Internal Iliac Artery.
33. Ileo-Lumbar.
34. Lateral Sacral.
35. Gluteal.
36. Vesical Arteries.
37. Obturator.
38. Ischiatic.
39. Internal Pudic.

FIG. 462.



- FIG. 462.
A VIEW OF THE ARTERIES OF THE STOMACH AND LIVER.
- 1.1. Crura of the Diaphragm.
 2. The Liver turned upwards.
 3. Its Left Lobe.
 4. Its Right Lobe.
 5. Lobulus Spigelii.
 6. Porta of the Liver.
 7. Ductus Choledocus.
 8. Vena Portarum.
 - 9.10.11. The Stomach.
 12. The Duodenum.
 13. The Spleen.
 14. The Pancreas.
 15. The Great Omentum.
 16. The Small Intestines.
 17. Tripod of Haller.
 18. Abdominal Aorta.
 19. Phrenic Arteries.
 20. Coronary Artery of the Stomach.
 21. Splenic Artery.
 22. Gastric Artery.
 23. Hepatic Artery.
 24. Right Gastro-Epiploic Artery.
 25. Branches to the Greater Curvature of the Stomach.
 26. Branches to the Omentum Majus.
 27. Main Trunk of the Hepatic dividing into Right and Left Branches, and giving off the Cystic Artery.