

FIG. 505.

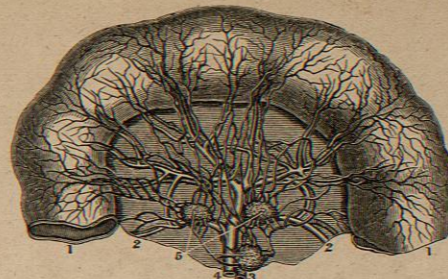


FIG. 506.

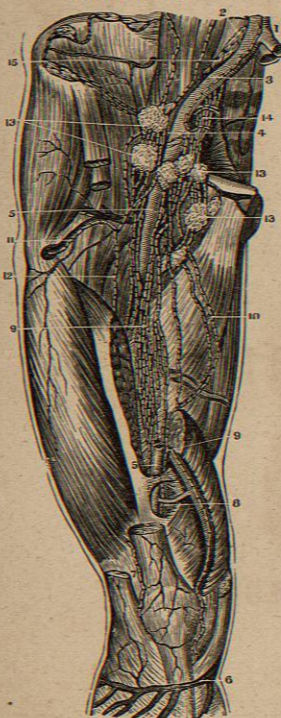


FIG. 508.



FIG. 507.



THE LYMPHATICS.

- FIG. 505.**
A VIEW OF THE LYMPHATICS OF THE JEJUNUM AND MESENTERY, INJECTED: THE ARTERIES ARE ALSO INJECTED.
1. Section of the Jejunum.
 2. Section of the Mesentery.
 3. Branch of the Superior Mesenteric Artery.
 4. Branch of the Superior Mesenteric Vein.
 5. Mesenteric Glands receiving the Lymphatics of this Intestine.

- FIG. 506.**
A FRONT VIEW OF THE DEEP-SEATED LYMPHATICS OF THE THIGH.
1. Lower End of the Aorta.
 2. Primitive Iliac Vein.
 - 3.4. External Iliac Artery and Vein.
 5. Femoral Artery.
 6. Section of the Femoral Vein.
 7. Vena Saphena on the Leg.
 8. Lymphatics near the Knee.
 9. Lymphatics accompanying the Femoral Vessels.
 10. Deep Lymphatics going from the inside of the Thigh to the Glands in the Groin.

11. Lymphatics of the External Circumflex Vessels.
12. Lymphatics on the outer side of the Femoral Vessels.
13. A Lymphatic Gland always found outside of the Vessels.
14. A collection of Vessels and Glands from the Internal Iliac Vessels.
15. The Lymphatics of the Primitive Iliac Vessels.

- FIG. 507.**
THE SUPERFICIAL LYMPHATICS OF THE INNER SIDE OF THE FOOT AND LEG.
1. The Venous Anastomosis on the Phalangeal Ends of the Metatarsal Bones.
 2. The Saphena Magna Vein.
 3. Lymphatics on the back of the Leg.
 4. The same Vessels on the lower part of the Thigh.
 - 5.5. Lymphatics coming from the Sole of the Foot.
 - 6.6. Lymphatics from the Dorsal Surface of the Foot.
 7. The Lymphatics which accompany the Saphena Vein.

8. Branches of Lymphatics from the Front and Outside of the Leg.
9. Branches from the Posterior and Internal side of the Calf of the Leg.

- FIG. 508.**
THE DEEP-SEATED LYMPHATIC VESSELS AND GLANDS ON THE BACK OF THE LEG.
1. Popliteal Artery.
 2. Popliteal Vein.
 3. Posterior Tibial Vessels: the Artery is between its two Veins.
 4. Peroneal Artery and Veins.
 5. Lymphatic Vessels from the Front of the Leg, coming through the Opening in the Interosseous Ligament.
 6. Deep-seated Lymphatic Vessels which arise in the Sole of the Foot and accompany the Blood-Vessels.
 7. Anastomosis of the Superficial and Deep-seated Lymphatics.
 - 8.9. Uniting Branches of Posterior Tibial Lymphatics.
 - 10.10. Popliteal Ganglions which receive the Deep Lymphatics of the Leg and Foot.
 - 11.11. Efferent Popliteal Trunks which accompany the Blood-Vessels to the Femoral Ganglions.