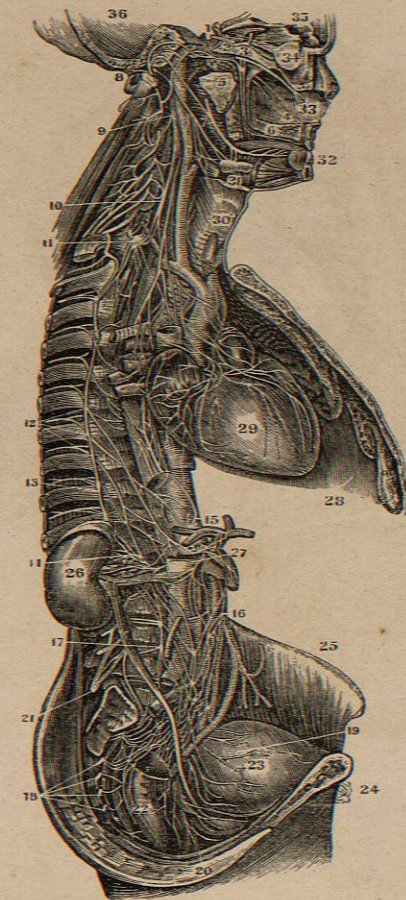


FIG. 624.



THE GREAT SYMPATHETIC NERVE.

FIG. 624.

A VIEW OF THE GREAT SYMPATHETIC NERVE.

- | | |
|--|---|
| 1. The Plexus on the Carotid Artery in the Carotid Foramen. | 14. The Renal Plexus. |
| 2. Sixth Nerve (Motor Externus). | 15. The Solar Plexus. |
| 3. First Branch of the Fifth or Ophthalmic Nerve. | 16. The Mesenteric Plexus. |
| 4. A Branch on the Septum Narium going to the Incisive Foramen. | 17. The Lumbar Ganglia. |
| 5. The Recurrent Branch or Vidian Nerve dividing into the Carotid and Petrosal Branches. | 18. The Sacral Ganglia. |
| 6. Posterior Palatine Branches. | 19. The Vesical Plexus. |
| 7. The Lingual Nerve joined by the Corda Tympani. | 20. The Rectal Plexus. |
| 8. The Portio Dura of the Seventh Pair or the Facial Nerve. | 21. The Lumbar Plexus (Cerebro-Spinal). |
| 9. The Superior Cervical Ganglion. | 22. The Rectum. |
| 10. The Middle Cervical Ganglion. | 23. The Bladder. |
| 11. The Inferior Cervical Ganglion. | 24. The Pubis. |
| 12. The Roots of the Great Splanchnic Nerve arising from the Dorsal Ganglia. | 25. The Crest of the Ileum. |
| 13. The Lesser Splanchnic Nerve. | 26. The Kidney. |
| | 27. The Aorta. |
| | 28. The Diaphragm. |
| | 29. The Heart. |
| | 30. The Larynx. |
| | 31. The Sub-Maxillary Gland. |
| | 32. The Incisor Teeth. |
| | 33. Nasal Septum. |
| | 34. Globe of the Eye. |
| | 35, 36. Cavity of the Cranium. |



FIG. 625.

FIG. 626.



FIG. 627.



NERVES OF THE UPPER EXTREMITY.

FIG. 625.

A VIEW OF THE BRACHIAL PLEXUS OF NERVES AND ITS BRANCHES TO THE ARM.

- 1.1. The Scalenus Anticus Muscle.
- 2.2. The Median Nerve.
- 3. The Ulnar Nerve.
- 4. The Branch to the Biceps Muscle.
- 5. The Thoracic Nerves.
- 6. The Phrenic Nerve, from the Third and Fourth Cervical.

FIG. 626.

A VIEW OF THE NERVES ON THE FRONT OF THE FORE-ARM.

- 1. The Median Nerve.
- 2. Anterior Branch of the Musculo-Spiral or Radial Nerve.
- 3. The Ulnar Nerve.

- 4. Division of the Median Nerve in the Palm to the Thumb, First, Second and Radial side of the Third Finger.
- 5. Division of the Ulnar Nerve to the Ulnar side of the Third and both sides of the Fourth Finger.

FIG. 627.

A VIEW OF THE NERVES ON THE BACK OF THE FORE-ARM AND HAND.

- 1.1. The Ulnar Nerve.
- 2.2. The Ramus Profundus Dorsalis Nerve.
- 3. Termination of the Nervus Cutaneus Humeri.
- 4. The Dorsalis Carpi, a Branch of the Radial Nerve.
- 5.5. A back view of the Digital Nerves.
- 6. Dorsal Branch of the Ulnar Nerve.

W. B. SAUNDERS



FIG. 629.



FIG. 628.

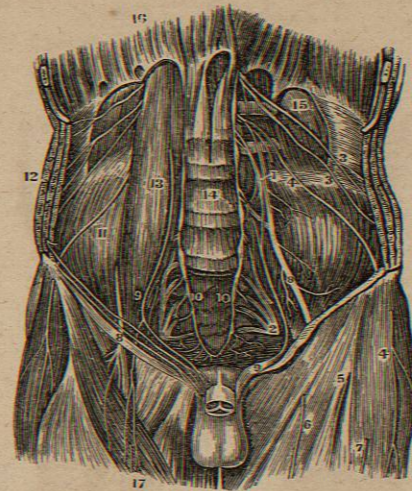


FIG. 630.



NERVES OF THE LOWER EXTREMITY.

FIG. 628.

A VIEW OF THE LUMBAR AND ISCHIATIC PLEXUSES AND THE BRANCHES OF THE FORMER.

- 1. The Lumbar Plexus.
- 2. The Ischiatic Plexus.
- 3.3. Abdomino-Crural Nerves.
- 4. The External Cutaneous Nerve (Inguino-Cutaneous).
- 5.6.7. Cutaneous Branches from
- 8. The Anterior Crural Nerve.
- 9. The Genito-Crural Nerve, or Spermaticus Externus.
- 10.10. The lower termination of the Great Sympathetic.
- 11. The Iliacus Internus Muscle.
- 12. The three broad Muscles of the Abdomen.
- 13. The Psoas-Magnus Muscle.
- 14. Bodies of the Lumbar Vertebrae.
- 15. The Quadratus Lumborum Muscle.
- 16. The Diaphragm.
- 17. The Sartorius.

FIG. 629.

A VIEW OF THE BRANCHES OF THE ISCHIATIC PLEXUS TO THE HIP AND BACK OF THE THIGH.

- 1.1. Posterior Sacral Nerves.
- 2. Nervi Glutei.
- 3. The Internal Pudic Nerve.
- 4. The Lesser Ischiatic Nerve, giving off the Perineal Cutaneous, and
- 5. The Ramus Femoralis Cutaneus Posterior.
- 6. Great Ischiatic Nerve.

FIG. 630.

A VIEW OF THE ANTERIOR CRURAL NERVE AND ITS BRANCHES.

- 1. Point where the Nerve comes out under Poupert's Ligament.
- 2. Division of the Nerve into its Branches.
- 3. The Femoral Artery.
- 4. The Femoral Vein.
- 5. The Branches of the Obturator Nerve.
- 6. The Nervus Saphenus.



FIG. 631.



A VIEW OF THE ANTERIOR TIBIAL NERVE.

- 1. The Peroneal Nerve.
- 2.3. The Anterior Tibial Nerve accompanying the Artery of the same name.

FIG. 632.



FIG. 632.

A VIEW OF SOME OF THE BRANCHES OF THE POPLITEAL NERVE.

- 1. The Popliteal Nerve.
- 2.3. Terminations of the Ramus Femoralis Cutaneus Posterior.
- 4.5. The Saphenous Nerve.
- 6.6. The External Saphenous or Communicans Tibia.

FIG. 633.



A VIEW OF THE POSTERIOR TIBIAL NERVE, IN THE BACK OF THE LEG.

- 1.2. Indicate its course; the upper part of the Peroneal Nerve being seen to the Right.

FIG. 634.



A VIEW OF THE TERMINATION OF THE POSTERIOR TIBIAL NERVE IN THE SOLE OF THE FOOT.

- 1. Inside of the Foot.
- 2. Outer side of the Foot.
- 3. The Heel.
- 4. Internal Plantar Nerve.
- 5. External Plantar Nerve.
- 6. Branch to the Flexor Brevis Muscle.
- 7. Branch to the outside of the Little Toe.
- 8. Branch to the space between the Fourth and Fifth Toes.
- 9.9. Digital Branches to the remaining Spaces.
- 10. Branch to the internal side of the Great Toe.

NERVES OF THE LOWER EXTREMITY.