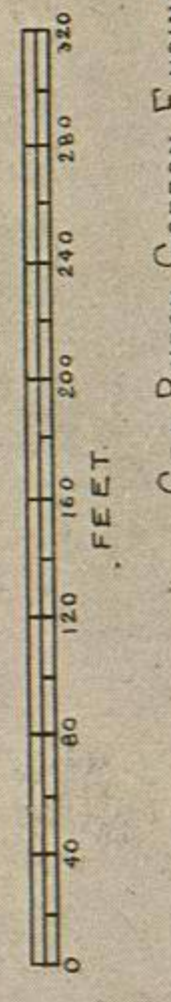


RUINS OF COPAN

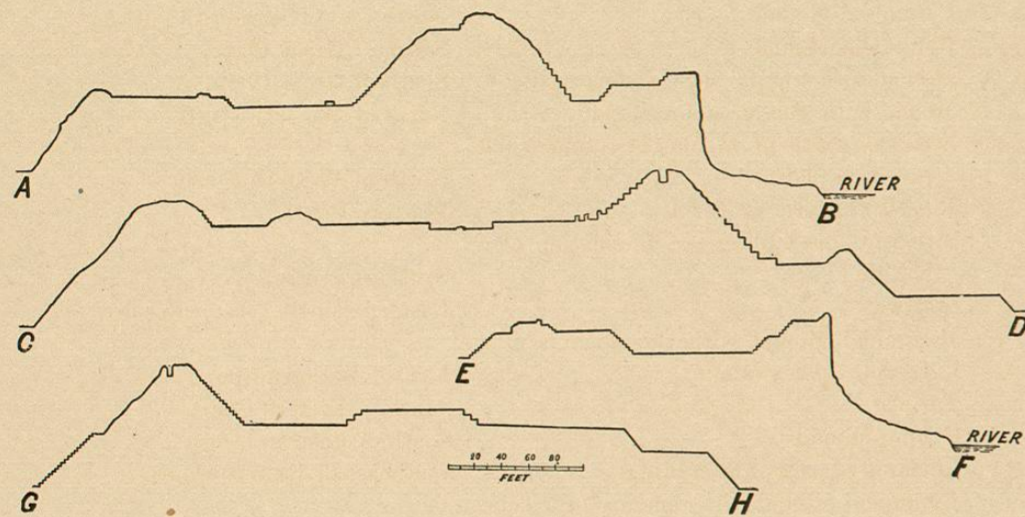
PEABODY MUSEUM EXPEDITION

PLAN OF THE PRINCIPAL STRUCTURES



Geo. Byron Gordon Engineer

PLATE I. PLAN OF THE RUINS. — *Continued.*



SECTIONS THROUGH MAIN STRUCTURE. See Plate I.

PLATE I. PLAN OF THE RUINS.

NUMBER.	CHARACTER OF RUINS.	LOCATION.
1	Pyramidal Mound	West of Great Plaza.
2	Pyramidal Mound	North of Great Plaza.
3	Pyramidal Mound	East of Great Plaza.
4	Pyramidal Mound	Great Plaza.
5	Small Mound (not numbered on plan)	West of Mound 9.
6	Oblong Mound with ruins of buildings upon summit	Southwest of Great Plaza.
7	Pyramidal Mound	Southwest of Great Plaza.
8	Pyramidal Mound	Northwest of Western Court.
9	Pyramidal Mound	South of Great Plaza.
10	Mound with angular northern extension	South of Great Plaza.
11*	Mound with Temple upon summit	North of Western Court.
12	Stairway south of Mound 11 (number not given on plan)	North of Western Court.
13	Raised Platform or Terrace	Western Court.
14	Structure resembling the foundation of a building	Southern Part of Western Court.
15	Stairway	Eastern side of Western Court.
16	Pyramidal Mound with the remains of a Temple upon summit	East of Western Court.
17	Terrace	South of Eastern Court.
18	Oblong Mound	South of Eastern Court.
19	Remains of part of a building	Southeast of Eastern Court.
20	Pyramidal Mound with remains of a Temple upon summit	East of Eastern Court.
21	Mound with ruined Temple upon summit	Northeast of Eastern Court.
21 a	Building between Mounds 21 and 22	North of Eastern Court.
22	Mound with remains of Temple upon summit	North of Eastern Court.
23	The Jaguar stairway (not numbered on plan = 24 of Maudslay)	West of Eastern Court.
24	Stairway. (This is 23 of Maudslay's plan.)	Southwestern corner of Eastern Court.
25	Probable stone foundation of oblong building	Elevation between Eastern and Western Courts.
26	Pyramidal Mound once crowned with a Temple	North of Eastern Court.
27	Hieroglyphic Steps on western slope of Mound 26	North of Eastern Court.
28	Tunnel leading from Eastern Court to the river wall. (Not numbered on plan, but shown by dotted lines.)	East of Eastern Court.
29	Terrace and Angular Mound	South of Pyramid 16.

* The same number is used to designate a Temple or the mound upon which it stands.

NUMBER.	CHARACTER OF RUINS.	LOCATION.
30 to 35	Group of small Mounds, No. 32 having the remains of a building upon summit	Southeast of Pyramid 16.
36 to 40	Group of small Mounds	South of Western Court.
41	Remains of a long building	South of Pyramid 16.
42	Inclined Plane leading down from terrace	South of Western Court.
43, 44, 45	Mounds forming portion of group	South of Pyramid 16.
46	Group of small Mounds	Southwest of Western Court.
47	Mounds enclosing court. Probably the remains of stone houses	West of Western Court.
48	The largest of a group of small Mounds	Southwest of Great Plaza.
49	Pyramidal Mound	Southwest of Great Plaza.
50	Ruined Buildings	Northern side of Pyramid 16.
51 to 53	Small Mounds	Southwest of Great Plaza.
54 to 56	Small Pyramidal Mounds	West of Great Plaza.

STELAE.	ALTARS.	LOCATION.
Stela A		North of Mound 4, Great Plaza.
Stela B		Near centre of Great Plaza.
Stela C	Altar of Stela C	Near centre of Great Plaza.
Stela D	Altar of Stela D	Northern part of Great Plaza.
Stela E		On Terrace west of Great Plaza.
Stela F	Altar of Stela F	Eastern part of Great Plaza.
Stela H*	Altar of Stela H	Eastern part of Great Plaza.
Stela I	Altar of Stela I	In niche at southern end of range of steps east of Great Plaza.
Stela J	Altar of Stela J	Near southeast corner of Mound 3, east of Great Plaza.
	Altar K	Near northern end of Oblong Mound southwest of Great Plaza.
	Altar L	Upon angular extension of Mound 10, south of Great Plaza.
Stela M	Altar of Stela M	Near foot of Hieroglyphic Steps, west of Mound 26.
Stela N	Altar of Stela N	At foot of steps north of Mound 11, north of Western Court.
Stela P †		Eastern side of Western Court.
	Altar Q	Eastern side of Western Court.
Stela 1	Altar of Stela 1	Western base of Mound 9, south of Great Plaza.
Stela 2		At southern base of angular extension of Mound 10, south of Great Plaza.
Stela 3		South of Mound 4, Great Plaza.
Stela 4	Altar of Stela 4	Near centre of Great Plaza.
Stela 11 ‡		In passage south of Eastern Court.

* G is used by Maudslay to designate a group of sculptures north of Stela H.
 † O is a sculpture at foot of stairway leading to Mound 7.
 ‡ Stelae 5, 6, 7, 8, 9, 10 are situated beyond the limits of the plan.

PLATE II.

FIG. 1. Main structure from eastern side of Copan River, looking north-northwest, showing underground walls of faced stone exposed by the undermining action of the river floods. Mound 16 is at the left, and the summit of Mound 20 is seen at the right of the centre of the illustration. (Pages 9-10.)

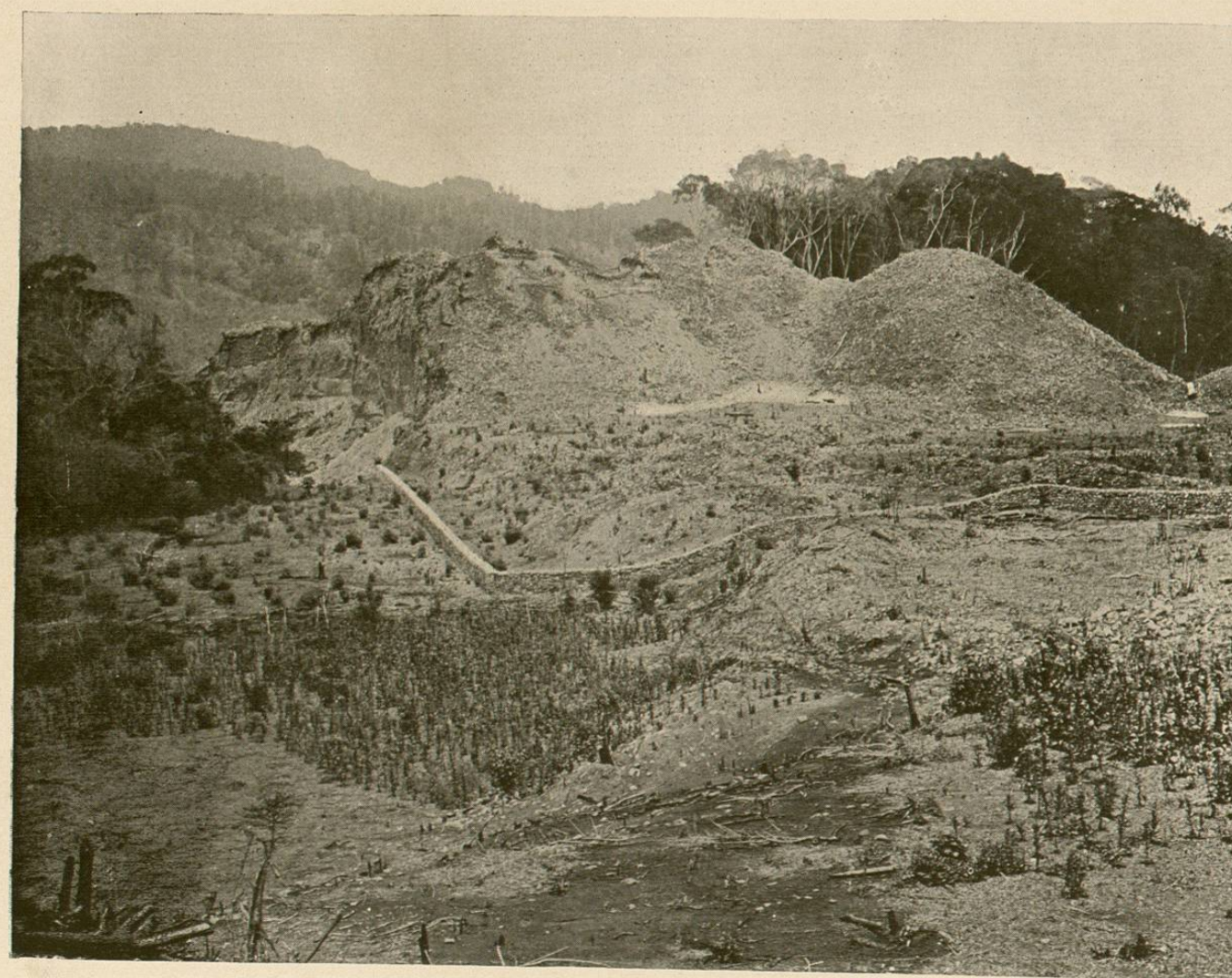
FIG. 2. Northeastern slope of Main Structure, looking southwest, showing, near centre of illustration, the elevations upon which stand Temples 21, 21a, and 22. To the right is Mound 26, and to the left is Mound 20 overhanging the river front. The stone wall in the foreground was built by the Peabody Museum Honduras Expedition for the protection of the ruins.



16

FIG. 1.

20



20

21

21a

22

26

10

FIG. 2.