

PLATE III.

FIG. 1. From summit of Mound 26, looking south. Pyramid 16 is in the middle distance with walls of buildings (50) against its northern base. (Pages 13-15.)

FIG. 2. From summit of Pyramid 16, looking northeast. A portion of Eastern Court is seen with the northern flight of steps leading up to Temples 21, 21a, and 22. The northern end of the eastern flight of steps is covered by the debris from Mound 20 at the extreme right. The Jaguar steps (23) are at the left in the foreground. Mound 21 with its ruined temple is shown at the right above the flight of steps. Mound 22 at the left. Temple 21a occupies the space between 21 and 22. (Pages 17-19. See also Plate II. 2, and Plate IV. 1.)

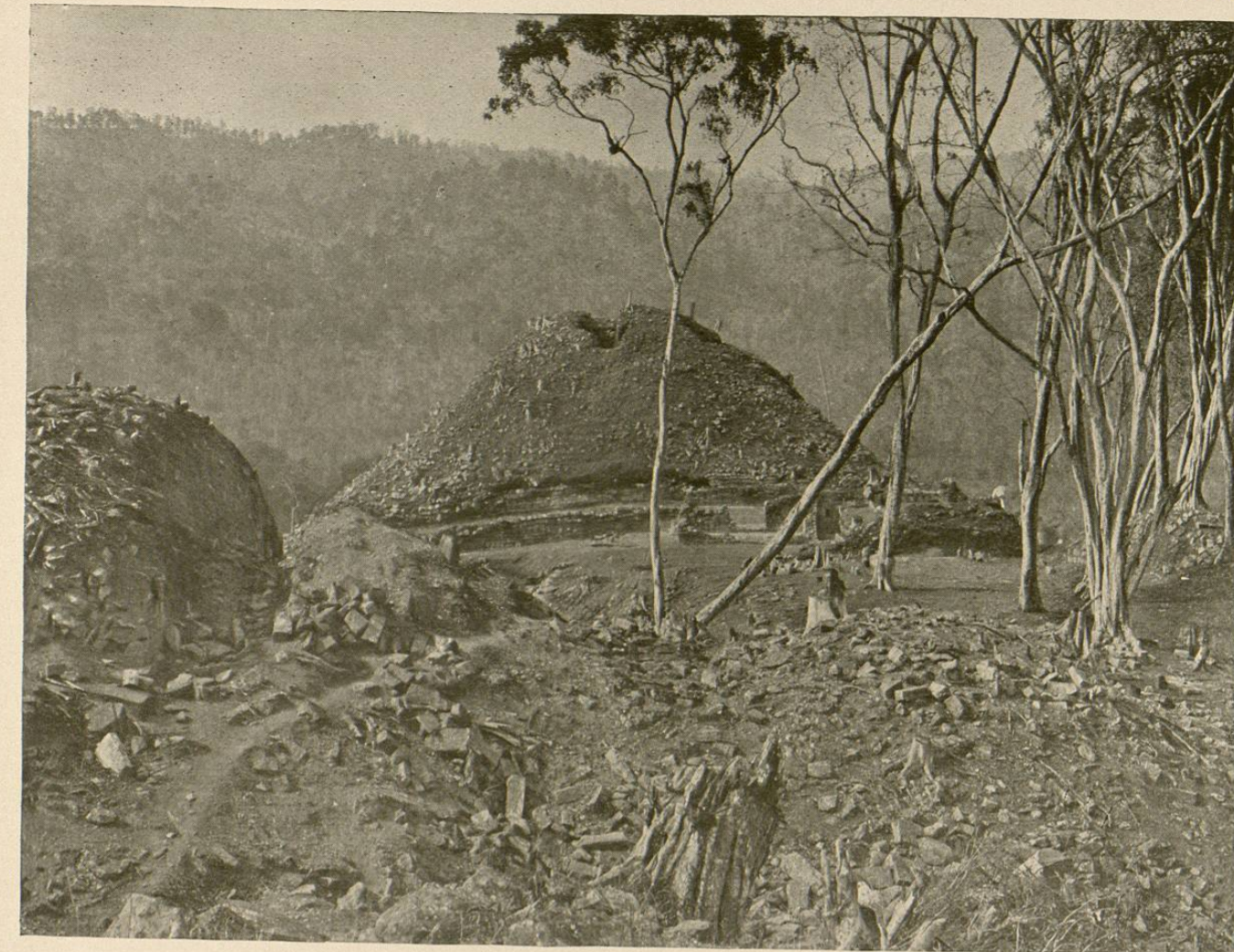


FIG. 1.

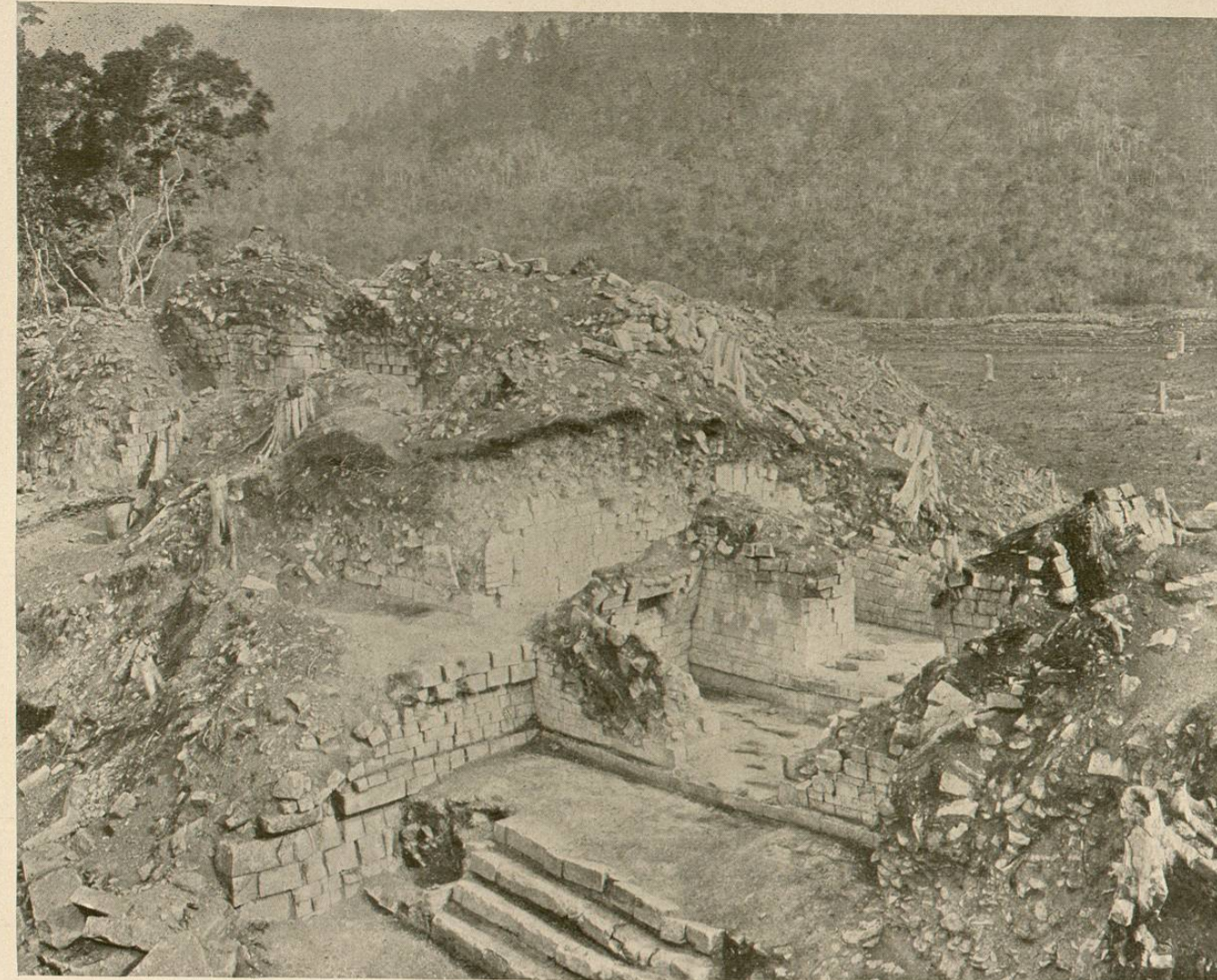


FIG. 2.

PLATE IV.

FIG. 1. From summit of Mound 20, looking northwest. Remains of building (21a) between Mounds 21 and 22. Mound 22 with ruined temple is at the left, and a part of the western side of Mound 21 at the right. A portion of the great Plaza appears on the right in the middle distance. (Page 18. See also Plate II. 2, and Plate III. 2.)

FIG. 2. From northern base of Mound 20, looking northeast. Small chamber with square doorways built against southern terrace of Mound 21. Parts of the walls and doorways of a similar chamber are upon the terrace above. The steps at the right lead to a ruined Temple, the greater portion of which has fallen into the river. (Page 19.)



22

FIG. 1.

21a

21

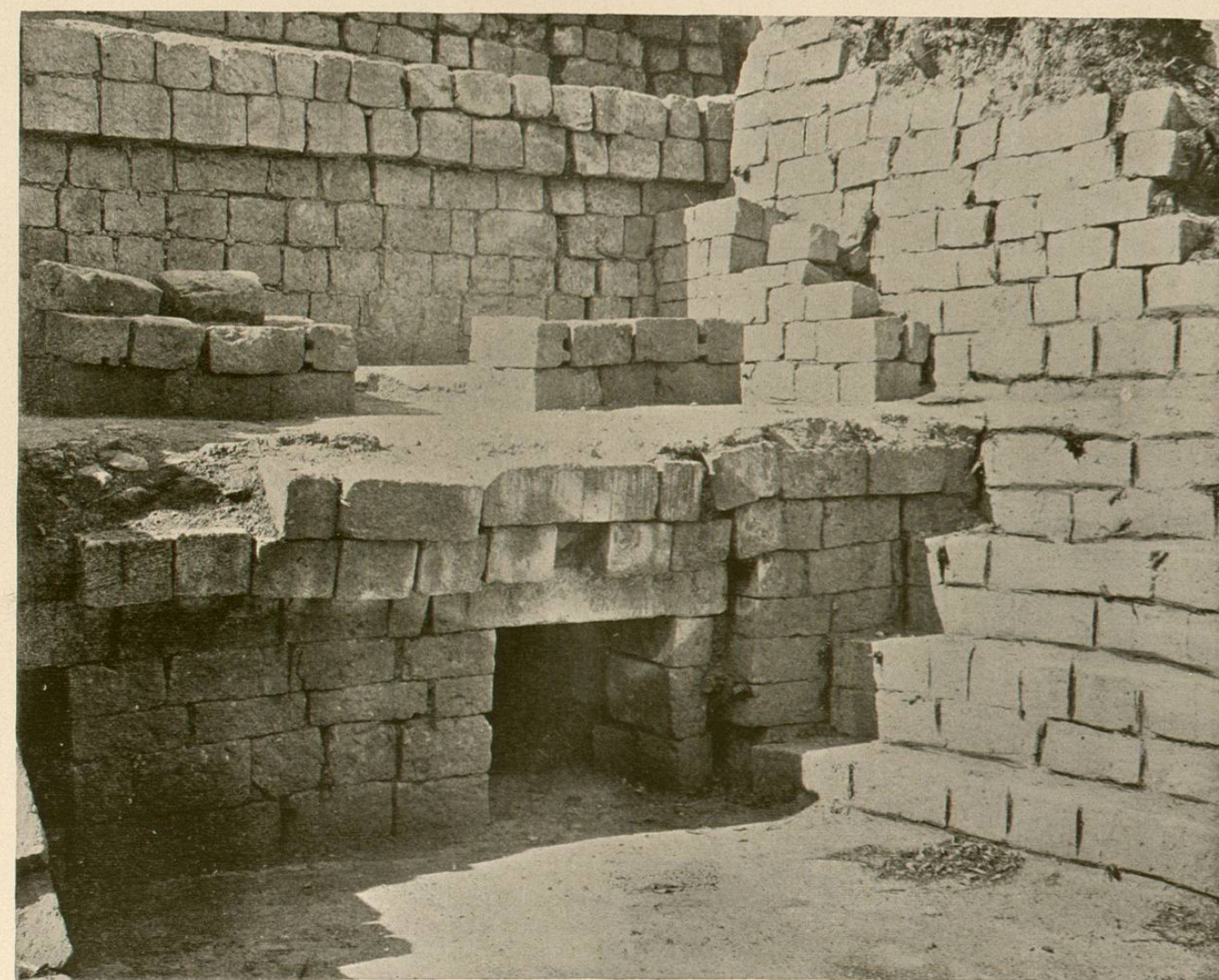


FIG. 2.

PLATE V.

FIG. 1. A portion of the Hieroglyphic Stairway with a pedestal at base. Western side of Mound 26. (Page 21.)

FIG. 2. Blocks from two steps of the Hieroglyphic Stairway, showing a broken sculpture representing a reclining human figure in central part of stairway. (Page 22.)



FIG. 1.



FIG. 2.