

PLATE VII.

- FIG. 1. Terra-cotta Objects found in the Excavations made in the Cave.
- a. Stamp, with short handle upon side not shown in illustration.
 - b. Balls, such as are frequently found within hollow legs of vessels.
 - c. Globular Beads.
 - d. Cylindrical Beads.
 - e. Ornamented Bead-like Object.
 - f. Potsherd Dishes.
 - g. Potsherd Dishes, perforated.
 - h. Legs of Vessels.
 - i. Potsherds with painted decorations.
 - j. Potsherds with incised decorations.

FIG. 2. Implements of Stone found in Excavations.

- a. Obsidian Knives.
- b. Knife Chipped Implement of Flint.
- c. Flat Knives or Scrapers.
- d. Flint Scrapers.
- e. Leaf-shaped Knife of Flint.
- f. Leaf-shaped Knife of Flint, broken.
- g. Flint Knife.
- h. Flint Scrapers.
- i. Fragment of Stone Implement.
- j. Perforated Stone.
- k. Roughly-shaped Stone Balls.
- l. Stone or Grinding Stone.

PLATE VIII.

FIG. 1. Stone-ware fragments found in the Excavations. These are probably fragments of vessels, and many of them are decorated in unburnt colors, including white, black, red, green, and yellow.

FIG. 2. Fragments of Stone, including Handles and Portions of Rims.

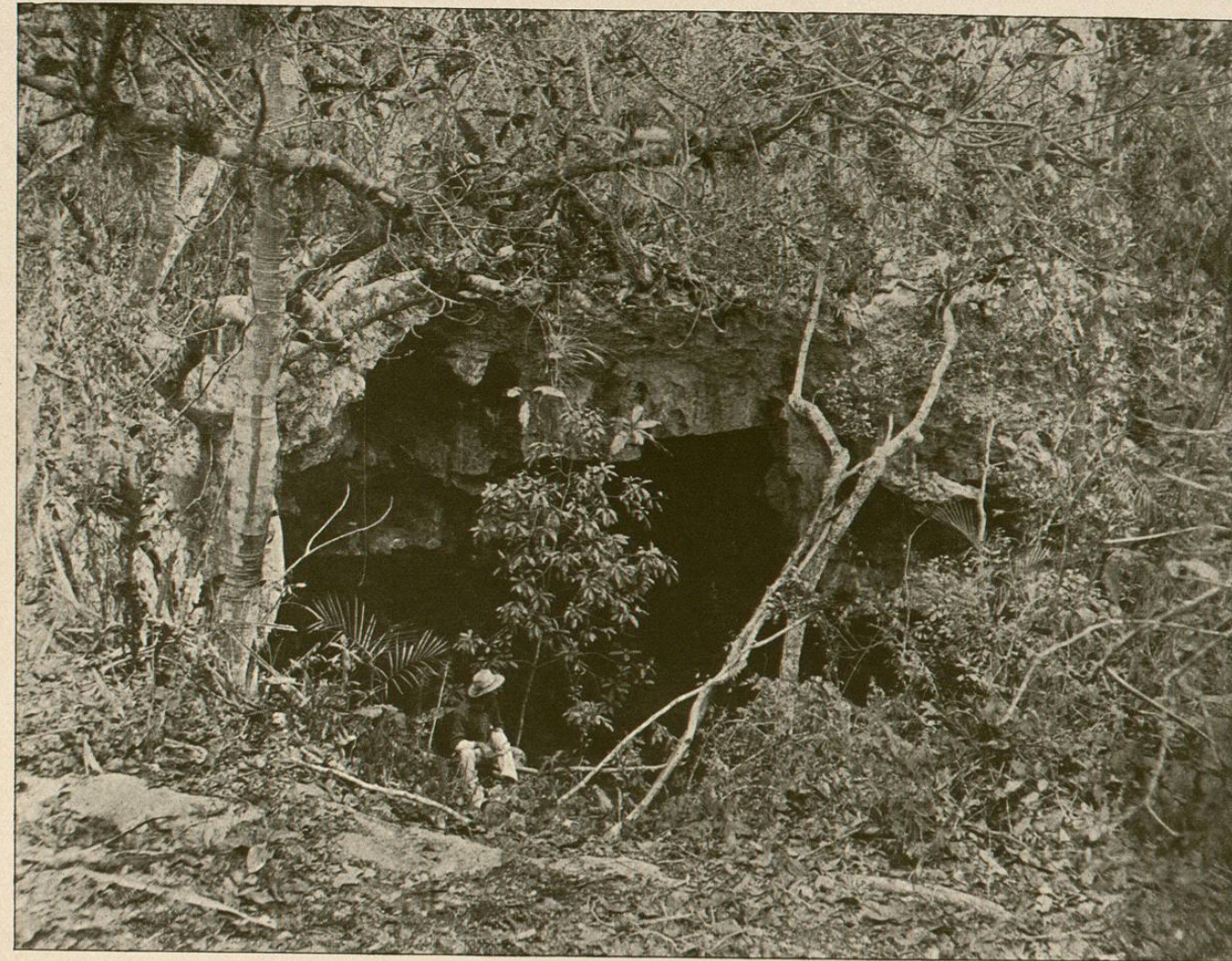


FIG. 1.—PRINCIPAL ENTRANCE TO CAVE OF LOLTUN.

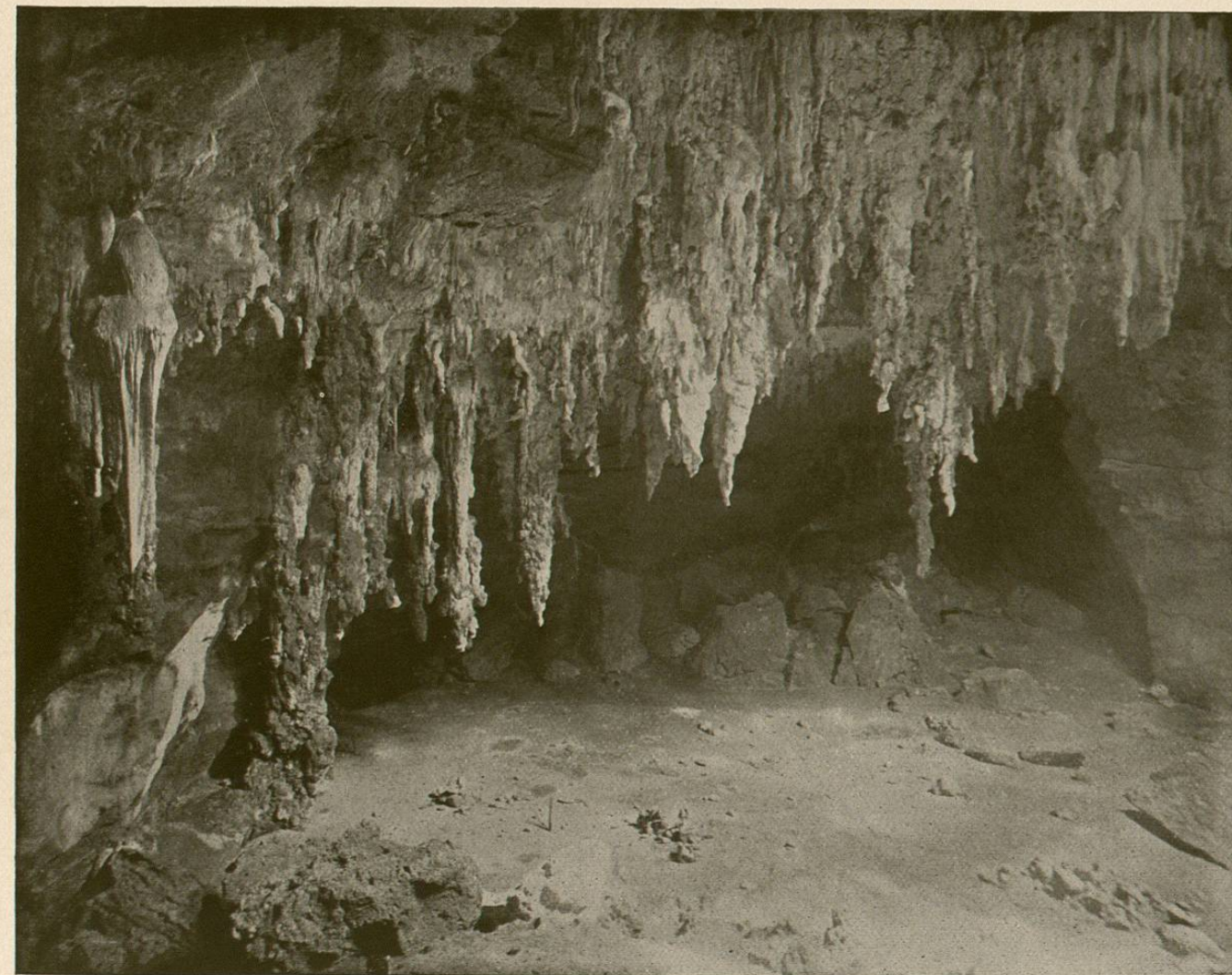


FIG. 2.—STALACTITES, INSCRIPTION CHAMBER (No. 3), CAVE OF LOLTUN.



FIG. 1.—INSCRIPTION 1, CHAMBER 3, CAVE OF LOLTUN.

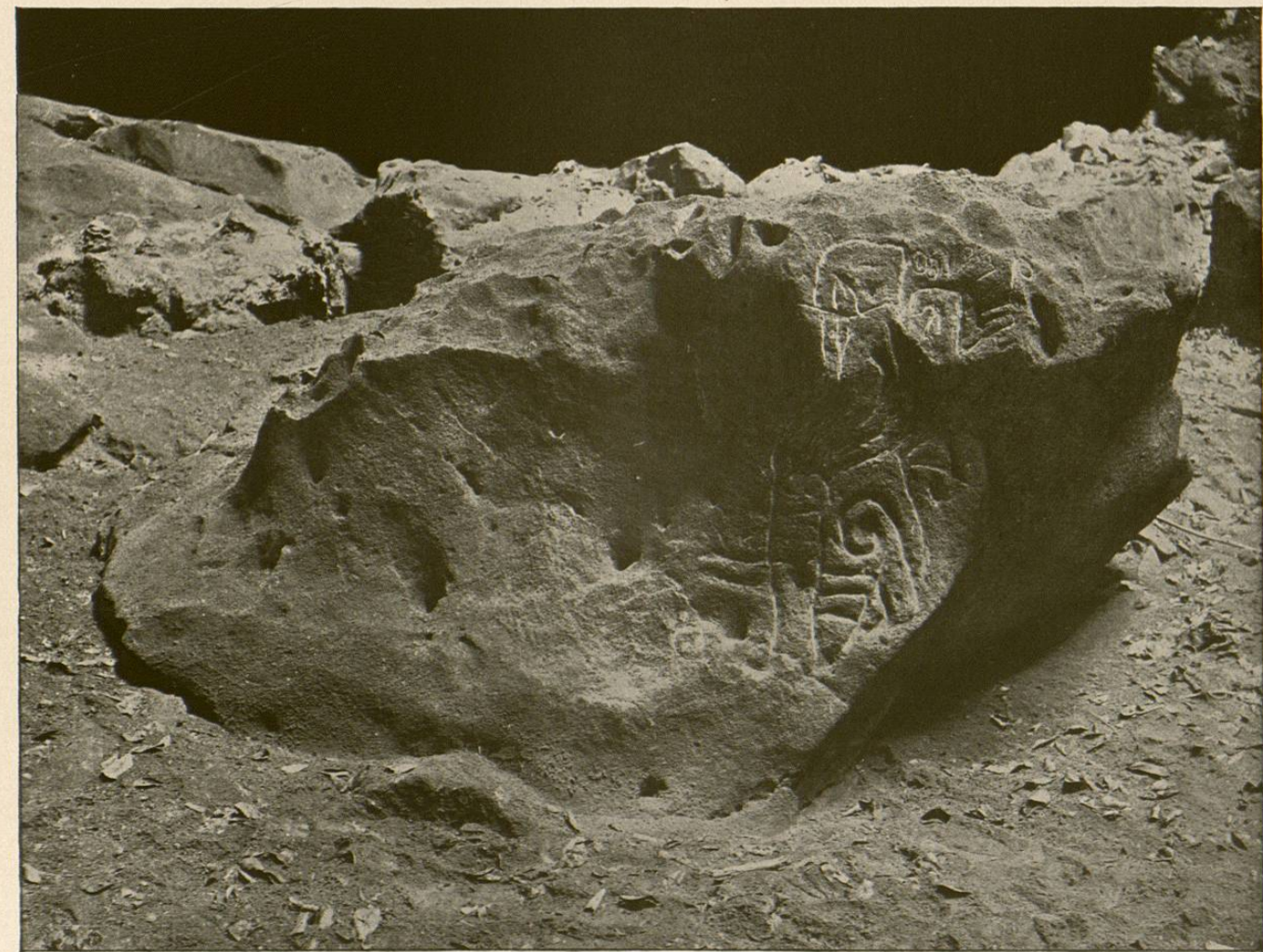


FIG. 2.—INSCRIPTION 6, CHAMBER 3, CAVE OF LOLTUN.

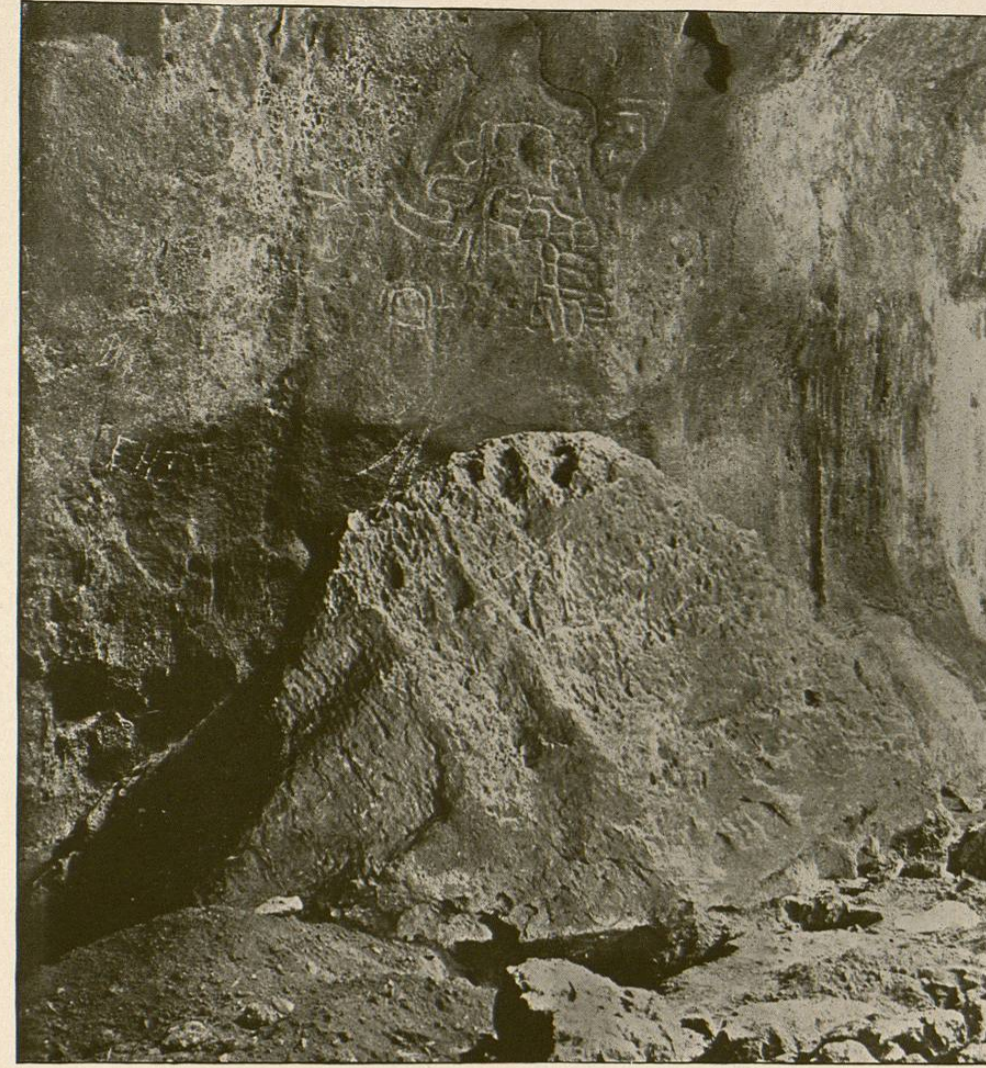


FIG. 1.—INSCRIPTION 2, CHAMBER 3, CAVE OF LOLTUN.

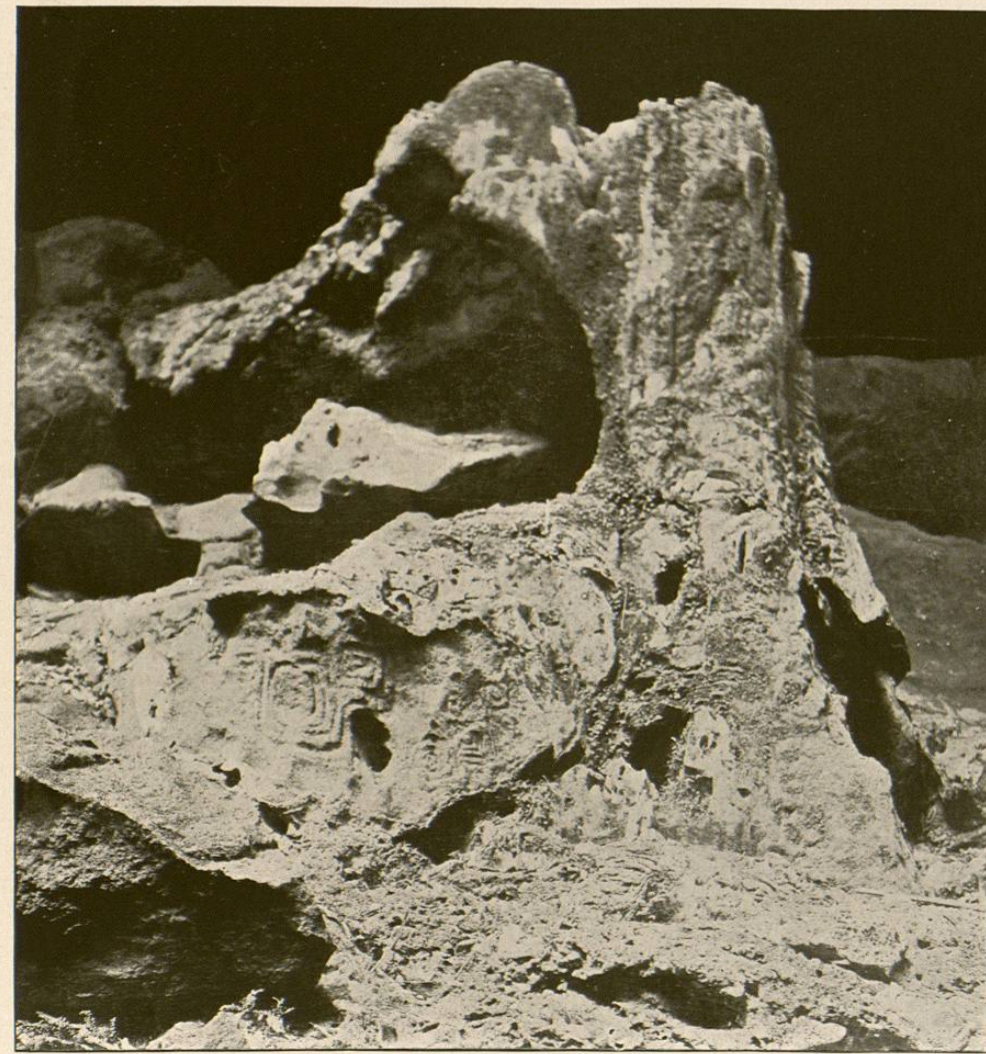


FIG. 2.—INSCRIPTION 7, CHAMBER 3, CAVE OF LOLTUN.