

INDEX.

Periods, hieroglyphic inscription, Copan, 168-186  
 Perry, E. W., 5  
 Phallic emblem, Labna, 87  
 Photographs, drawings and moulds, Peabody Museum expeditions, 151, 157  
 Pickering, Henry, iv, 96; Mr. and Mrs., 152  
 Piedras Negras, 175  
 Pigment, red, Copan, 62; Uloa, 117  
 Pigments, pocket of, Copan, 36  
 Pipe, stone, from Salvador, 117 (note)  
 Pipe, terra cotta, from Uloa, 117, 133  
 Pits, under mound 41, Copan, 28  
 Plan of operations in exploration of Copan, 8  
 Plan of mound 26, Copan, 153  
 Plan of Ruins at Copan, following page 48  
 Plan of Ruins at Uloa, 103  
 Plans, Cave of Loltun, 56-60  
 Plantain as food, 100  
 Plaster work, Copan, 9, 12, 17, 21, 23  
 Platforms, Copan, 15, 19  
 Playa de los Muertos (Shore of the Dead), 97, 101, 108  
 Plumed serpent, Copan, 25, 39; Uloa, 121  
 Polochic River, 127 (note)  
 Pop, month sign, 170, 174, 179-181  
 Portrait-like heads, 28, 34, 165  
 Potsherds, Copan, 13, 26; caverns of Copan, 141, 142; Loltun, 55; Labna, 82; Uloa, 108  
 Pottery, in Copan, 26, 27, 30, 34, 35-37; in Loltun, 60-68; in Uxmal, 75; in Labna, 82-91; in Uloa, 100, 104, 107-125, 134-136  
 Pottery in caverns of Copan, 143; different from that of Copan, 145; contents of, 147  
 Pottery image, mother and child, Uloa, 115, 116  
 Pottery-making, high development in Uloa valley, 130 (see also list, 134-136)  
 Pottery vessel with perforated bottom, Labna, 83  
 Pottery vessels with designs in relief and hieroglyphs, from Guatemala, Uloa, and Copan, compared, 111, 112, 113, 131  
 Pottery whistles (see Whistles)  
 Potts, Mr. and Mrs. T. J., 7  
 Puerto Caballos, 127 (note)  
 Puerto Cortez, 97, 127  
 Putnam, F. W., iii, 6, 51, 75, 95, 151  
 Pyramidal foundations, Copan, 9  
 Pyramidal mound, Uloa, 103  
 Pyramidal mounds, Copan, 1, 25; 4, 23; 9, 20; 16, 10, 13-16, 38; 26, 20, 21, 153-157; 54, 55, 56, 25  
 Quetzal, feathers of, sculptured, Copan, 165  
 Quicksilver, Copan, 24  
 Quinistan, 127 (note)  
 Quirigua, moulds of monoliths, 6, 7  
 Rabbit bones, Labna, 88  
 Rain, how predicted, Uloa, 105, 106  
 Rattlesnake, sculptured, Copan, 156, 165, 166  
 Reclining human figure in stone, Copan, 162  
 Red clay, core of, 104  
 Red pigment, used in Yucatan, Quirigua, and Copan, 62; Uloa, 117

Red pottery, Copan, 11  
 Reeds used in Copan for various purposes, 141  
 Refuse heap in mound 36, Copan, 26  
 Reservoirs, natural and artificial, Yucatan, 78-80  
 Ring of bone, Labna, 83  
 Rio Blanco, 108, 109  
 Rio Dulce, 126 (note), 127 (note)  
 Robertson, 4  
 Rock carvings, Cave of Loltun, 64, 69  
 Roof of stone and cement, Copan, 19  
 Roof-stones, Copan, 16  
 Route of Peabody Museum Honduras expeditions, 7  
 Ruins of Copan, 1-48  
 Ruins at San Pedro Sula, 127 (note)  
 Ruins of Labna, Yucatan, 51

Salisbury, Stephen, iv, 52, 76, 96, 152  
 Sandoval, 127 (note), 128  
 San Gil de Buena Vista, 126 (note), 127 (note)  
 Santa Barbara, 108, 109  
 Salvador, stone pipe from, 117 (note)  
 Santana, village of, 100, 108  
 San Pedro Sula, 97, 99, 117, 127 (note)  
 Santa Rita, modern village at Copan, 29  
 Santa Rosa, 155  
 Saville, M. H., iii, 6, 13, 15, 17, 29, 31, 38, 51, 52, 65, 69

Scherzer, Carl, 155  
 Scroll work, Copan, 17, 34, 39  
 Sculpture, in bas-relief, on wall of cave of Loltun, 52; in mezzorelievo, on walls of reservoir, Labna, 86, 87; rude stone idol, Uloa, 95, 103, 104  
 Sculptures, Copan, Sculpture O, 25; X, 42; Y, 42; Z, 13, 41, 42; oldest in bas-relief, 42, 43 (see Altars, Animal, Carving, Grotesque, Hieroglyphs, Human, Serpent, Stela, Turtle)

Sealing of Chultunes, Labna, 77, 81, 82, 85  
 Sea-shell pendant, Labna, 82  
 Sea-shell, worked, Labna, 86, 89  
 Seals (see Stamps)  
 Sears, Mrs. Philip H., 52, 76  
 Sears, Philip H., iv  
 Seated human figure, carved in stone, Copan, 22, 158-160  
 Seler, Eduard, 170, 174  
 Serpent, feathered, Copan, 34, 39; Uloa, 121  
 Serpent, represented by Hieroglyphic Stairway and Altar, Copan, 158  
 Serpent head, sculptured, Copan, 7, 22, 23, 158, 166; on incense-burner, Copan, 32; painted on pottery vessel, Uloa, 107  
 Serpent symbols, Copan, 159, 160  
 Serpents, Caducean, compared with sculptured serpents, Copan, 166  
 Serpents, sculptured, Copan, 34, 39, 156, 165, 166; Labna, 87

Sesemil River, Copan, 139  
 Shell beads, Copan, 27; Labna, 83-85, 88, 89  
 Shell disks, Copan, 27; Labna, 82, 89  
 Shell lip ornament, Labna, 82  
 Shell objects, in tomb, Copan, 82

INDEX.

Shell ornaments, Copan, 13, 30, 31; Loltun, 65, 66, 68; Labna, 85-91  
 Shells, *Spondylus calcifer* found at Copan, 21, 36, 37  
 Shields, in painted decoration of pottery, Uloa, 120-122; in sculpture, Copan, 158  
 Shorkley, George, 6  
 Short-nosed god, 165  
 Skeletons, animal, of a jaguar, Copan, 24; of native dog, Labna, 87 (see Animal bones)  
 Skeletons, human, Copan, 26-28, 30-32; caverns of Copan, 143, 145; Labna, 88; Uloa, 102 (see Human bones)  
 Skulls, carved in stone, Copan, 17  
 Skulls of monkey, sculptured, Copan, 15 (see also Death's heads)  
 Skulls of the peccary, beautifully carved, Copan, 30  
 Snake in mezzorelievo on wall of reservoir, Labna, 87  
 Société des Américanistes de Paris, 117  
 South Kensington Museum, 5  
 Spaniard, as one antecedent of peoples of Uloa valley, 100  
 Spear-points, Copan, 19; Loltun, 66 (see also Implements)  
 Specimens collected in the Uloa valley, 110; compared with those from Oaxaca, 115; origin of and historical relation of, 126-133 (see list 134-136)  
 Square Altar, Copan, 20  
 Square Mound, Uloa, 104  
 Square Pyramid (1), Copan, 25  
 Squared stone, as building material, Copan, 35  
 Squier collection, 117  
 Stairways, Copan, 13-21, 25, 26, 39; Hieroglyphic, 153  
 Stalactites, Copan, 36, 37; caverns of Copan, 141, 145; Loltun, 59, 64  
 Stalagmite, Cave of Loltun, 58-60, 63, 67; cavern of Copan, 143, 145, 147, 148  
 Star, North, in glyphs, 174  
 Statuettes in terra cotta, Uloa, 116  
 Stela at Copan, 33-43; 1, 36, 39, 174, 176; 3, 36; 4, 42; 5, 38, 42; 6, 37; 7, 38; 8, 38; 10, 29; 11, 38; 12, 29; A, 171; B, 167; C, 36-40, 169-171, 185; D, 24, 171, 174; E, 24; J, 24, 34; M, 35, 164, 185; N, 171, 182, 183, 185; P, 15, 174 (see plan of Ruins, following page 48)  
 Stela, double-faced, 35  
 Stamps or seals, in terra cotta, in Loltun, 62; in Labna, 83; in Uloa, 116, 117, 132, 136  
 Stephens, J. L., 1, 4, 5, 7, 15, 23, 25, 75, 154, 155, 165  
 Steps, carved in conventional pattern, Copan, 31 (see Stairways)  
 Stokes, Miss Caroline P., iv, 152  
 Stokes, the Misses, 52, 76  
 Stone ball, Labna, 82, 86  
 Stone beads, Copan, 24, 38; Labna, 88, 89 (see also Beads)  
 Stone collars, Labna, 81, 86, 87  
 Stone columns as support to roof, Copan, 19  
 Stone-covered mounds, Uloa, 95, 102-104  
 Stone-cutting, art of, Uloa, 130  
 Stone foundations, Copan, 29  
 Stone idol, Uloa valley, 103, 104

Stone implements, Copan, 19, 24, 32 (see Implements)  
 Stone metate, Copan, 32; Labna, 91  
 Stone neck-pendant, Loltun, 68  
 Stone pipe from Salvador, 117 (note)  
 Stone quarries, Copan, 29  
 Stone steps, Chultunes, Labna, 79  
 Stone (calcite) vases, Uloa, 117, 118  
 Stone water-trough, Cave of Loltun, 63, 64  
 Stone work, Copan, 9, 11, 12, 17, 18, 23, 25, 35, 153, 163, 168; Loltun, 55; Labna, 77, 91  
 Stones, with sculptured human figure, 2, 24  
 Stucco work, Copan, 19, 159; Labna, 75, 77, 82, 84, 89, 90  
 Subscribers to Fund for the encouragement of research in Central America, List of, iv, 52, 76, 96, 152  
 Subterranean Chambers, Copan, 10, 16, 19, 21, 26, cruciform, 35-38 (see also Tombs)  
 Sulaco River, 108, 109  
 Sun shield, in decoration of painted pottery, Uloa, 122  
 Sweet, H. N., 51, 53, 65  
 Symbolism, in decoration of pottery, 30, 111-125; in Copan sculpture, 33-43  
 Symbols, unknown, Yucatan, 59; Loltun, 62, 69 (see Bird, Cord, Feathered Serpent, Serpent, etc.)

Tabi, hacienda of, Yucatan, 53, 54  
 Table or bench of mortar cement, Copan, 18  
 Tables, stone (see Altars)  
 Tablet of crystalline limestone, Uloa, 105  
 Teeth of clay image, filed, Uloa, 116  
 Teeth of dog, Copan, 24; Labna, 89  
 Teeth of horse, Copan, 31  
 Teeth of jaguar, painted red, 24  
 Teeth, human, Labna, 82, 83, 85, 88, 89  
 Teeth, human, filed and ornamented with jadeite, Copan, 26-32; Yucatan, 52; Loltun, 67, 68; Uloa, 102  
 Tegucigalpa, 97  
 Temples, Copan, 11, 22; 20, 10, 16; 21, Copan, 17, 19; 22, 10, 17; 50, 10  
 Temple of the Sun, Palenque, 173, 174  
 Terraces of stone seats, at Copan, 11  
 Terraces, Copan, 16-20, 22, 24, 25, 28, 153, 159, 163; Uloa, 99, 126  
 Terra cotta, perforated cylindrical pieces of, Labna, 83; fragments of, 90  
 Terra-cotta balls, Labna, 89  
 Terra-cotta beads, Labna, 83, 88 (see Beads)  
 Terra-cotta beetle, Labna, 89  
 Terra-cotta crucibles (?), Uloa, 117  
 Terra-cotta ear-ornament, Uloa, 117  
 Terra-cotta figures, Labna, 87; Uloa, 116, 135, 136  
 Terra-cotta heads, human and animal, Labna, 82-91; Uloa, 115, 116  
 Terra-cotta implement, Uloa, 117  
 Terra-cotta masks, Uloa, 115, 116, 136  
 Terra-cotta casts and moulds, Labna, 85, 89, 90; Uloa, 116, 117

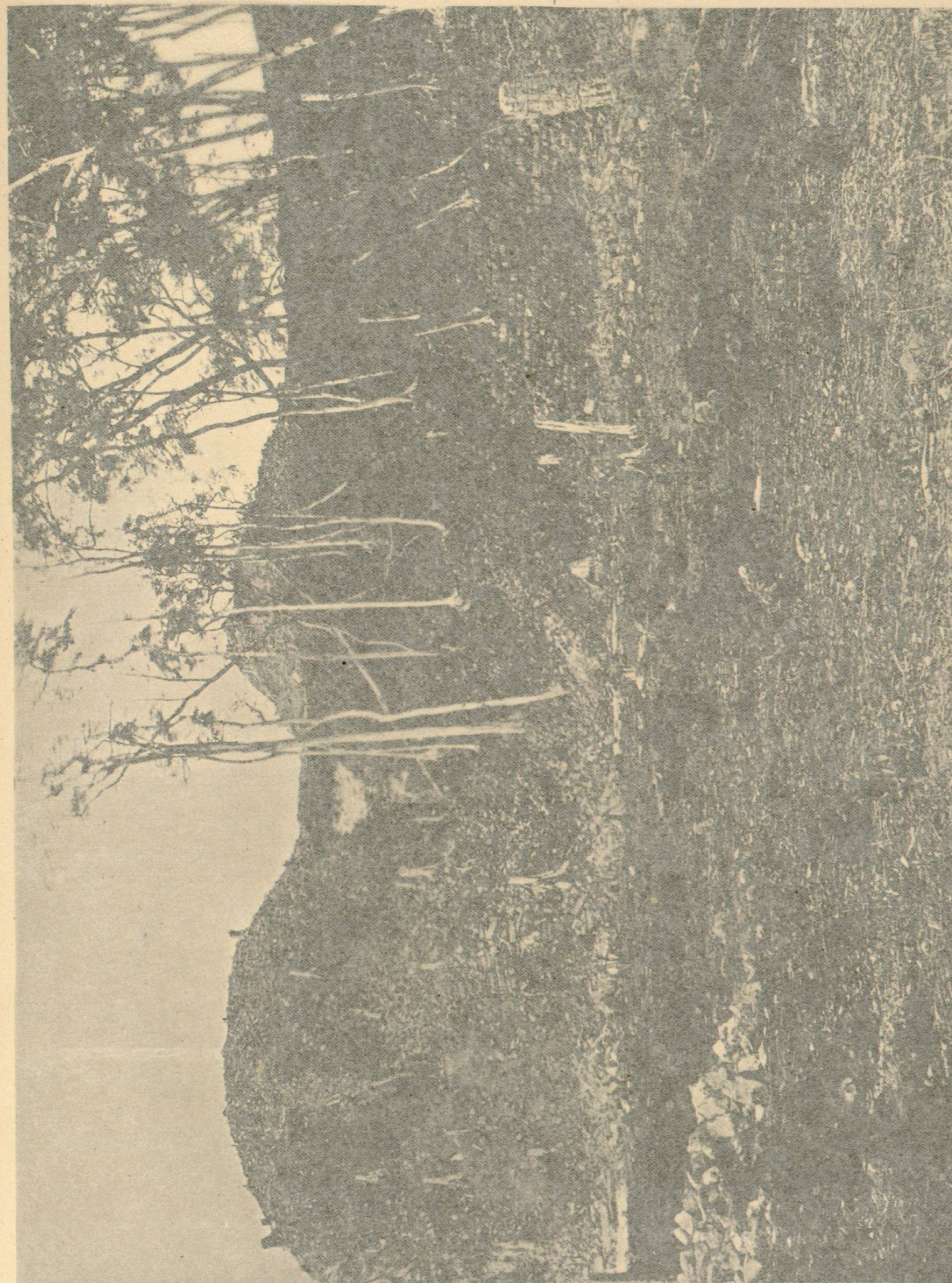
INDEX.

- Terra-cotta musical instruments (see Musical instruments)
- Terra-cotta objects, Labna, 86-91; Loltun, list of, 72
- Terra-cotta paint-holder, Uloa, 117
- Terra-cotta pipe, Uloa, 117, 133
- Terra-cotta stamps, Loltun, 62; Labna, 83; Uloa, 116, 117; Mexico and Venezuela, 132 (see also 136)
- Terra-cotta vase in form of wolf's head, Copan, 48
- Terra-cotta vessel resembling Greek lamp, Labna, 90 (see also Pottery)
- Terra-cotta whistles, Copan, 30; Labna, 82-91; Uloa, 113-116, 126; Uloa and Chiriqui, 132, 135, 136
- Textile fabrics, Copan, 35
- Thayer, Nathaniel, iv, 52, 76, 152
- Thompson, Edward H., 51, 53, 65, 75, 76, 116
- Ticul, Yucatan, 53, 54
- Tigers' heads, carved in rock, Loltun, 69; sculptured, Copan, 167
- Tikal, wooden lintel from, 34
- Toad, in mezzo-relievo, on wall of reservoir, Labna, 87
- Tobacco pipe of clay, Uloa, 133
- Tombs, nos. 1, 4, 7, and 10, Copan, 29-32
- Trachyte rock, used for Copan sculptures and building material, 34, 131, 139, 163
- Tripod vases, Copan, 21; Loltun, 67; Uxmal, 75
- Triunfo de la Cruz, 126 (note)
- Truxillo, 127 (note)
- Tun, period, 168-186
- Tunnel from Eastern Court to face of cliff, Copan, Galindo's account of, 11; Owen's description of, 12, 13
- Turtle, sculptured, in Copan, 39, 167; in Labna, 86, 87; in Chichen Itza, 167; in Quirigua, 167; in picture writing, Codex Peres., 167; in stucco, Labna, 89
- Twin monkeys, whistle, Uloa, 113
- Tzec, month sign, 170, 181, 183, 184
- Uayeb, day sign, 176
- Uinal, period, 168-186
- Uloa River, 98, 99, 108, 109, 127
- Uloa Valley, researches in, 95-136
- Uo, month sign, 180
- Uxmal, 75, 79
- Vandalism, 8
- Vase representing head of wolf, Copan, 30
- Vases of calcite, Uloa, 117
- Vaults, cruciform, under stelæ, Copan, 35-38 (see also Subterranean Chambers)
- Vegetable form in decoration of vase, 125
- Venezuela, 132
- Venus sign, 174, 184
- Vera Cruz, 126 (note)
- Vera Paz, 162
- Villages of native peoples of the Uloa valley, 100
- Ware, Mrs. Charles E., iv, 52, 76, 96
- Ware, Miss Mary L., iv, 52, 76, 96, 152
- Warren, Mrs. Samuel D., 52, 76
- Water, scarcity of, natural and artificial reservoirs for, 78, 79
- Water-god, face of, 174 (note)
- Water-plant, representation of, 162
- Water-sheds, Cave of Loltun, 62
- Water-troughs (Haltunes) Cave of Loltun, 54, 63, 64
- Weld, William F., iv
- Western Court, Copan, 13, 15, 16
- Whistles, Copan, 30; Loltun, 68-70; Labna, 82-91; Uloa, 113-116, 126, 132, 135, 136
- White enamel, use of, Uloa, 116
- Willoughby, C. C., iv, 52
- Wing-stones, Copan, 17
- Wolcott, Mrs. J. Huntington, iv
- Wolf, head of, represented in vase, Copan, 30, 48
- Wooden axe handle (?) Cavern of Copan, 142
- Wooden lintel from Tikal, described by Maudslay, 34
- World's Columbian Exposition, 6
- Xicaque Indians as antecedents of native peoples of Uloa valley, 100
- Xicaques, pure-blooded Indians of mountains of Yoro, 128
- Xkichnook, ruins, 79
- Xul, month sign, 170
- Yax, month sign, 170
- Yaxkin, month sign, 170, 183
- Yellow stone pebbles, Loltun, 66
- Yojoa Lake, 108
- Yoro, mountains, 128 (note)
- Yucatan, Map of, 51, 53; explorations in, 75
- Yzabal, 1, 7
- Yzabal Lake, 127 (note)
- Zac, month sign, 170
- Zahcab, native name for kind of earth used for stucco, Labna, 75, 81, 84, 88-91
- Zeitschrift für Ethnologie, 174
- Zip, month sign, 170
- Zotz, month sign, 169, 177

ERRATA.

- Comatan, read Camotan (see Index)
- Chemilicon, read Chamelicon (see Index)
- Yohoa, read Yojoa (see Index)
- Page 184, 4th line from bottom of page, for 18, read 8
- Page 184, 2d line from bottom of page, second word, for third, read fourth

PLATE I.



MOUND 26 AND ADJOINING PART OF MAIN STRUCTURE SHOWING SITE OF HIEROGLYPHIC STAIRWAY BEFORE EXCAVATION.

MEMOIRS PEABODY MUSEUM, VOL. I. No. 6.

HIEROGLYPHIC  
STAIRWAY.

REPRODUCED BY G. L. BOSTON.