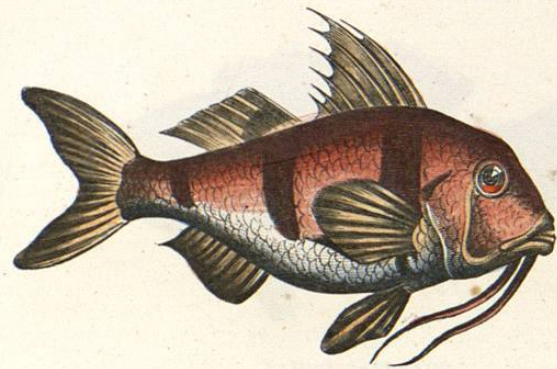
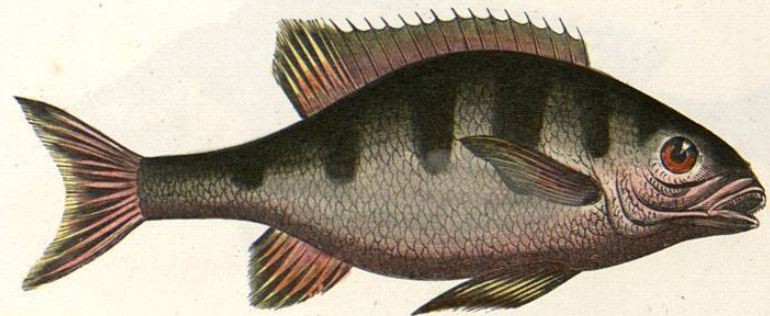


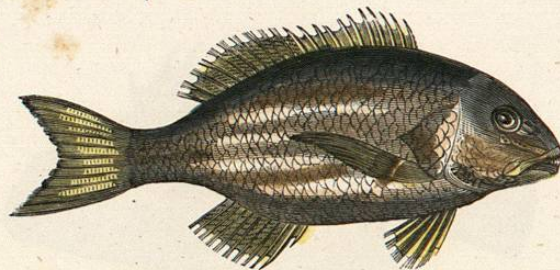
MULO DE DOS FAJAS.



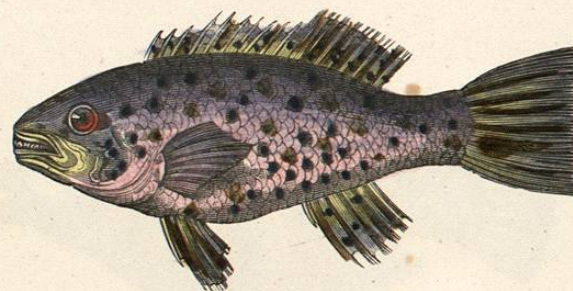
MULO DE TRES FAJAS.



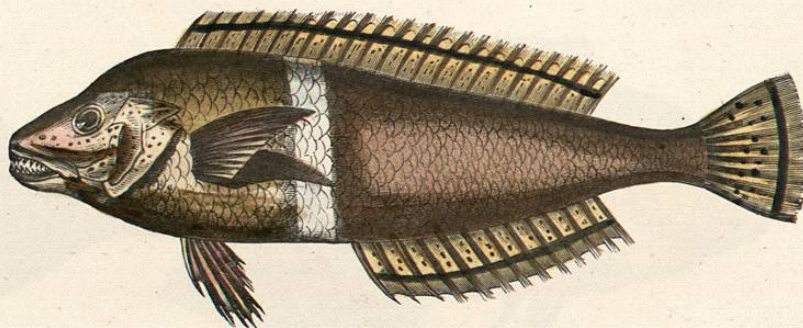
LABRO DE QUINCE ESPINAS.



LABRO FULIGINOSO.



LABRO JASPEADO.



LABRO CON CINTURON.



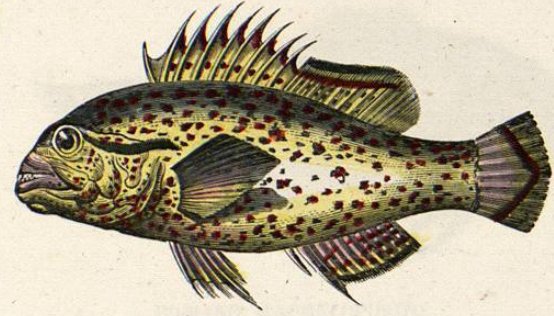
Faint text, likely bleed-through from the reverse side.



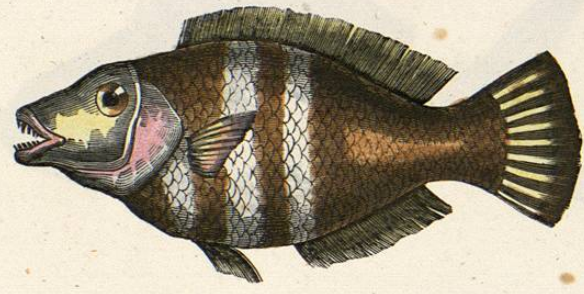
Faint text, likely bleed-through from the reverse side.



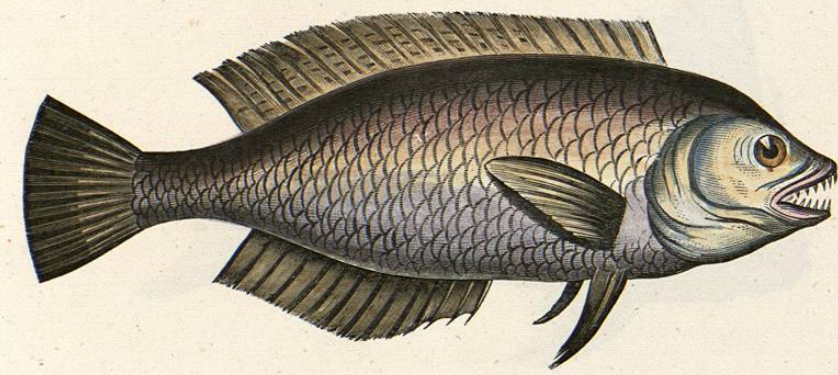
Faint text, likely bleed-through from the reverse side.



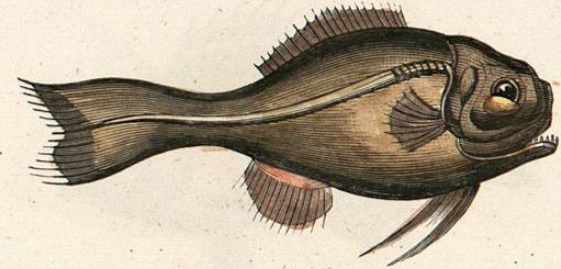
LABRO LEOPARDO.



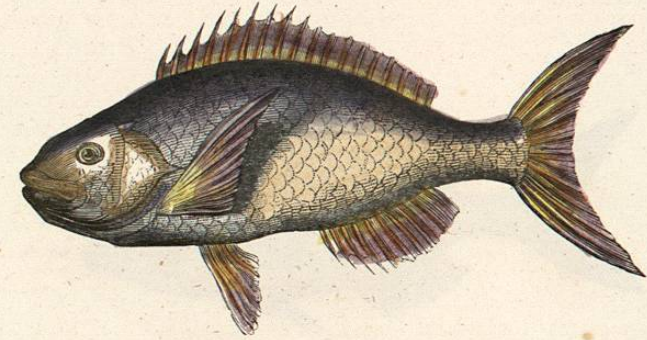
LABRO MALEPTERONOMO.



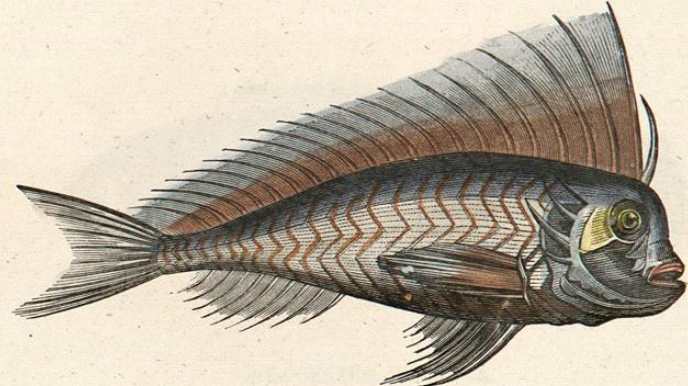
LABRO TENIURO.



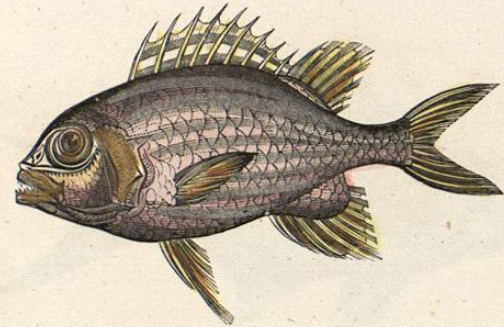
BODIANO MACRELOPIDOTO.



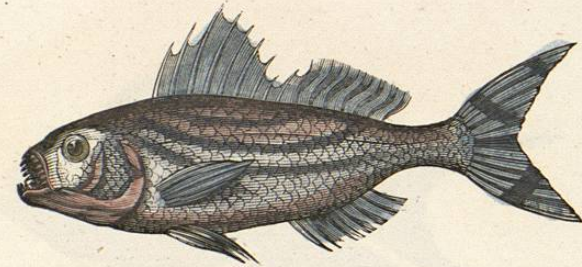
BODIANO MANCHADO.



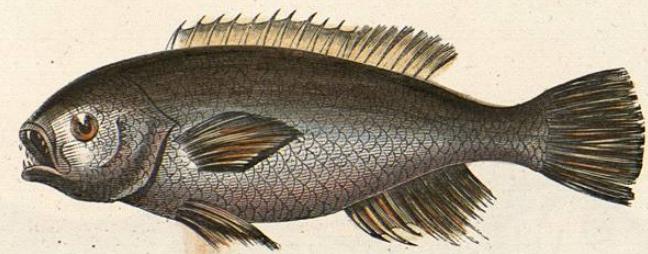
TENIANOTO DE ANCHAS RAYAS.



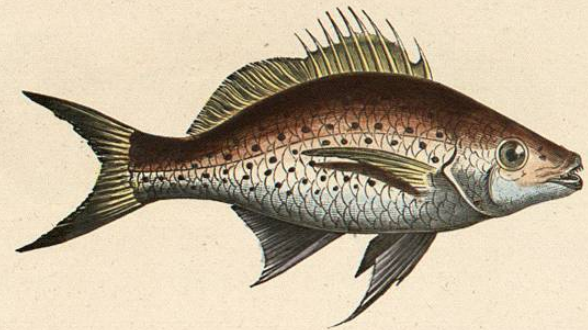
HOLOCENTRO DIADEMA.



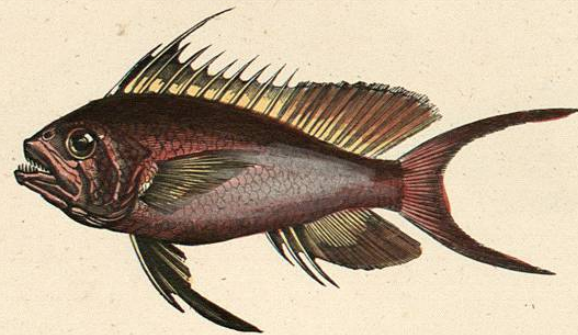
HOLOCENTRO JARBOA.



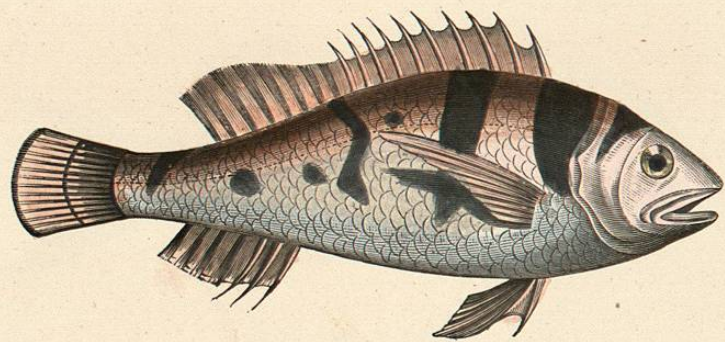
HOLOCENTRO ROSMARA.



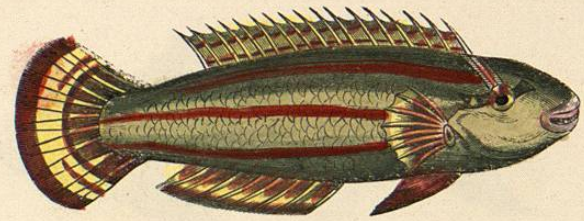
LUTJAN MICROSTOMO.



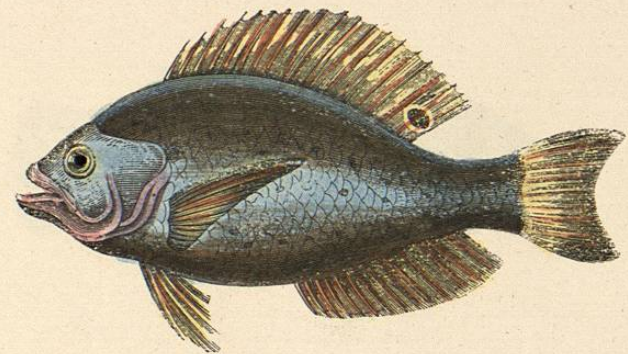
LUTJAN ANTIAS.



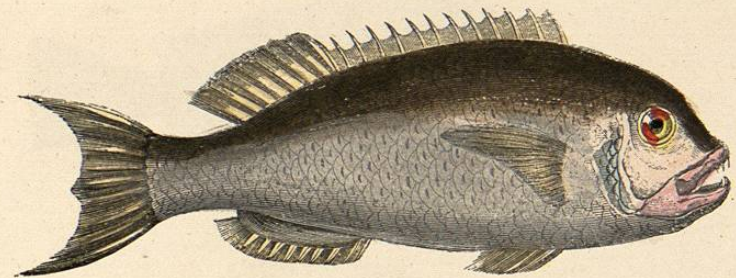
LUTJAN MANCHADO.



LABRO CON PELUCA.



LABRO IRIS.



LABRO TRILOBULADO.