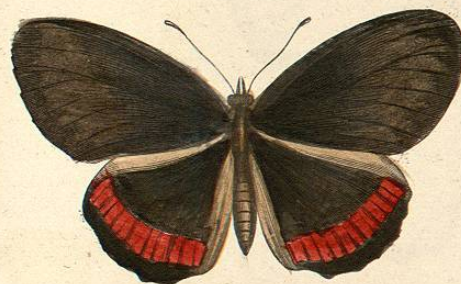
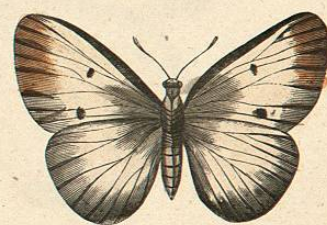


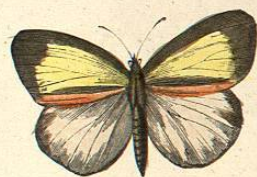
HELICONIO FILIS.
(*Heliconius phyllis*.)



BIBLIDE TADANA.
(*Biblis Thadana*.)



ANTOCARIDE EUPOMPO.
(*Anthocharis eupompe*.)



TERIADE ELATEA.
(*Terias clothæa*.)



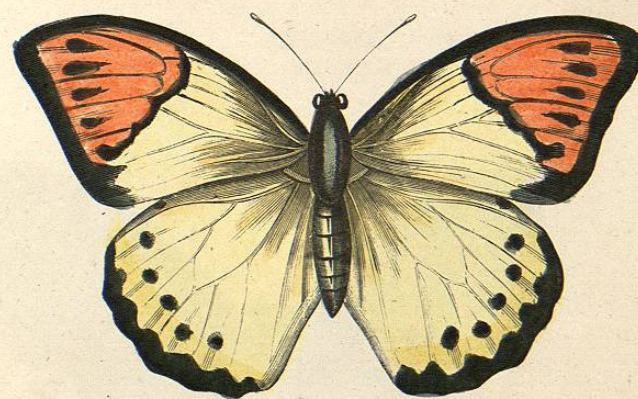
EUMENIA MINIJAS.
(*Eumenia Minijas*.)



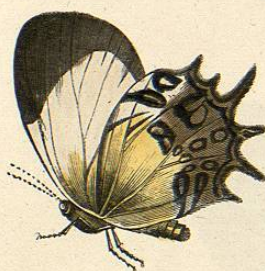
LICENA TEOFRASTA.
(*Lycena Teoфраstes.*)



BARBICORNIO BASILAR.
(*Barbicornis basilar.*)



IFIAS GLAUCIPO.
(*Iphias glaucippe.*)



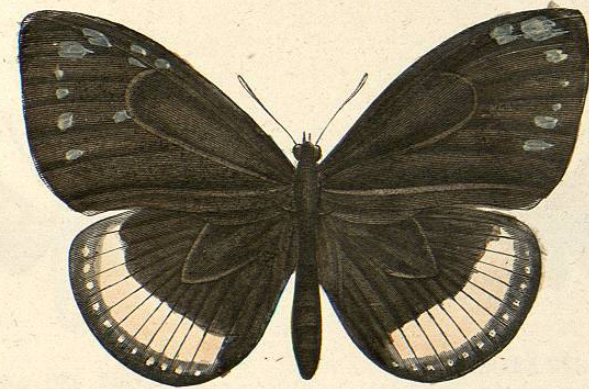
HELICOPIS GNIDUS VISTA POR DEBAJO.



HELICOPIDE GNIDO O ENDIMION.
(*Helicopis gnidus.*)



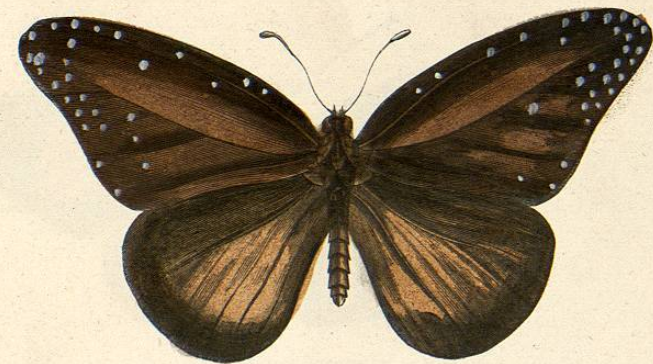
PERIDROMIA FERONIA.
(*Peridromia feronia*.)



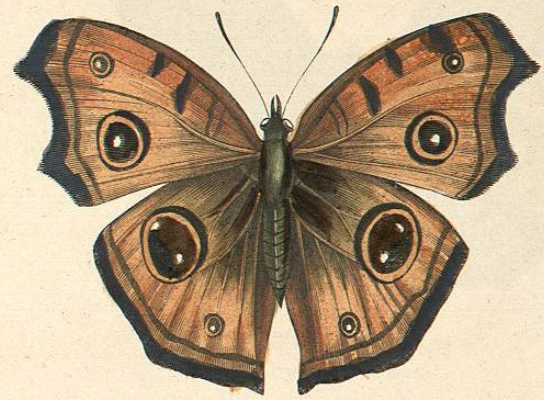
EUPLEA EUFONA.
(*Euplea euphona*.)



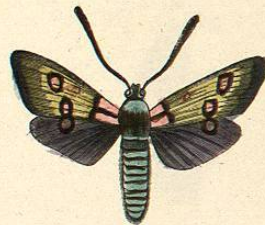
CRISALIDA
DEL (DANAIS CHRYSIPPUS.)



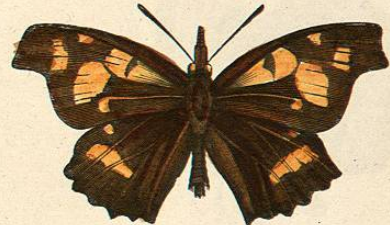
DANAIDE BERENICE.
(*Danais berenice*.)



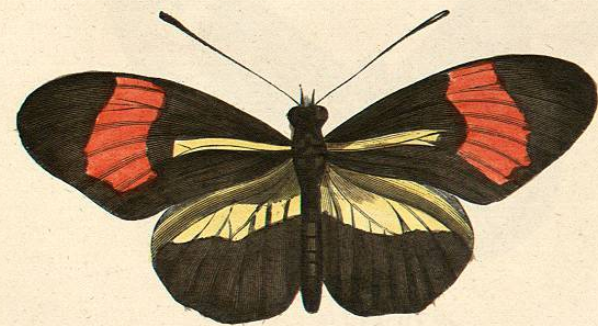
VANESA ALMANA.
(*Vanessa Almana*.)



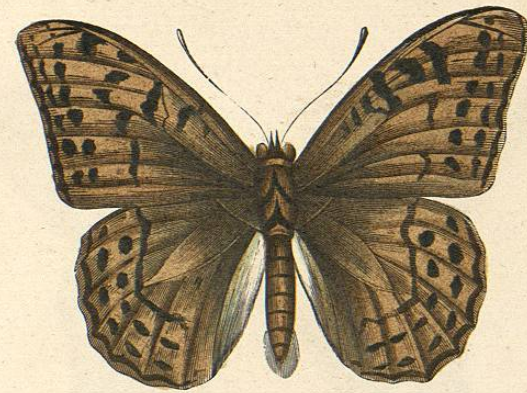
ZIGENA DEL ESPLIEGO.
(*Zygæna lava dulca.*)



LIBITEA DEL CELTIS
(*Lybythea Celtis.*)



HELICONIO MELPOMENE.
(*Heliconius Melpomene.*)



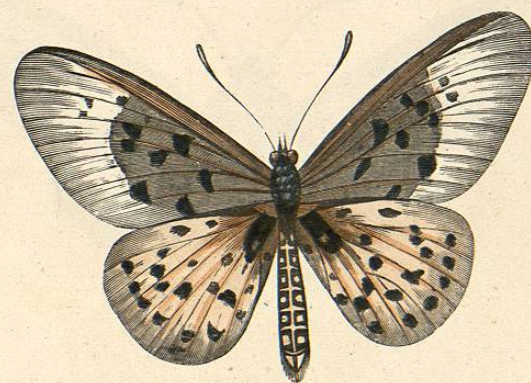
ARGINIDE PANDORA.
(*Argynnis Tardora*).



ARGINIDE PANDORA VISTA POR DEBAJO.

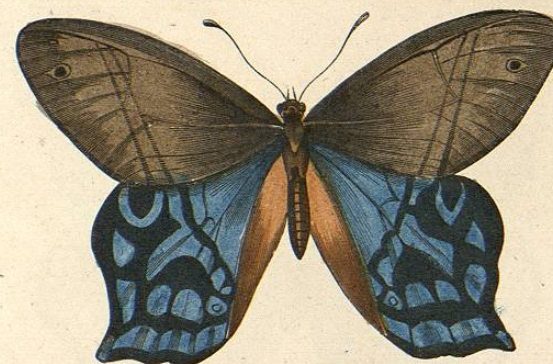


CRISALIDA DEL ARGINIDE PANDORA.



ACREA OVAS.
(*Acrea ovas*).





SATIRO LENA.
(*Hetera Lena.*)



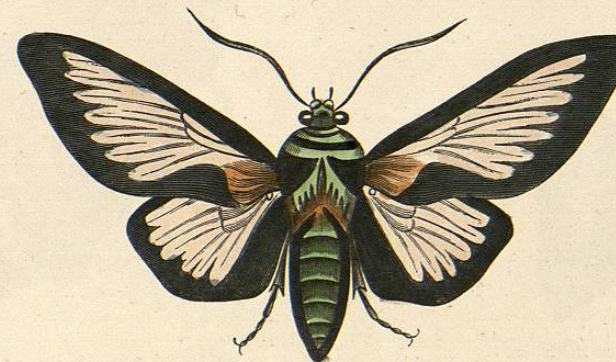
ARGOS DAMON.
(*Argus Damon.*)



PROCRIDE DE LOS PRADOS.
(*Procris statices.*)



ZERITIDE TISBE.
(*Zerithis Thysbe.*)



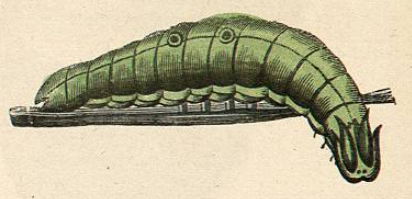
COCTIA DE URVILLE.
(*Cocytia Urvillei.*)



NINFALIDE JASIO.
(*Charaxes Jasius.*)



EL MISMO VISTO POR DEBAJO.



SU LARVA.



SU CRISALIDA.