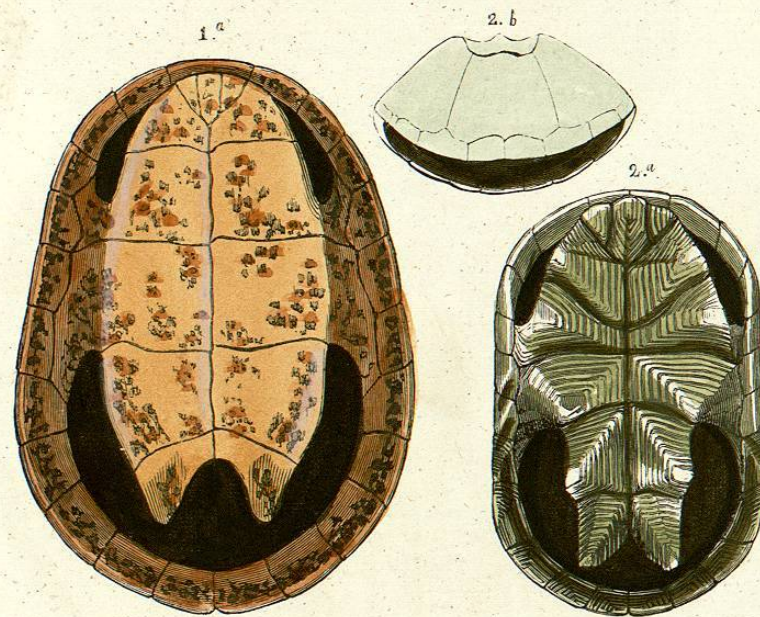


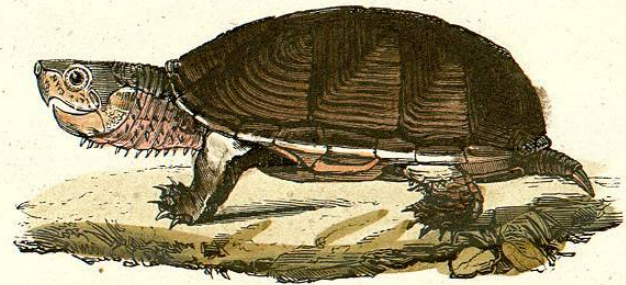
ESTERNON DEL CINOSTERNON PENNSYLVANICA;—2 ID. DEL PELCOCEPHALUS TRACAXA.



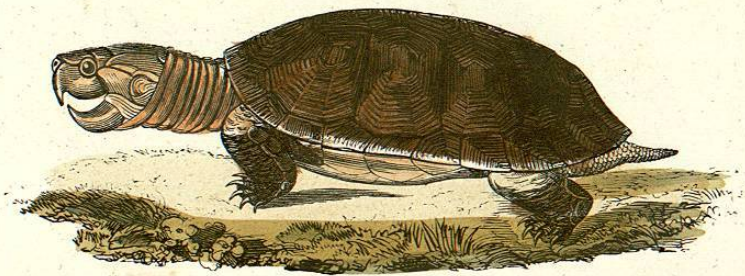
1 a ESTERNON DEL PODOCNEMIS EXPANSA;—2 a ID. DEL PENTONYX CAPENSIS;—2 b CARAPACHO DEL MISMO VISTO POR DELANTE.



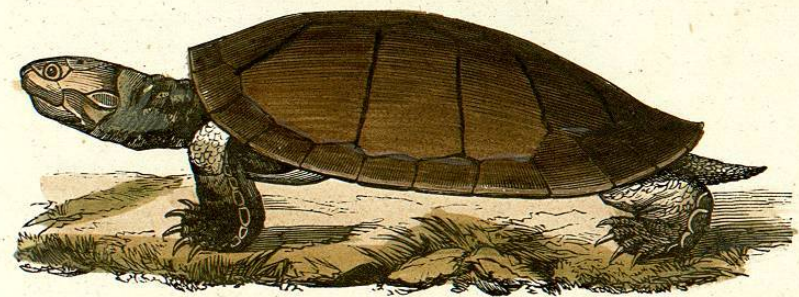
DRAGON.



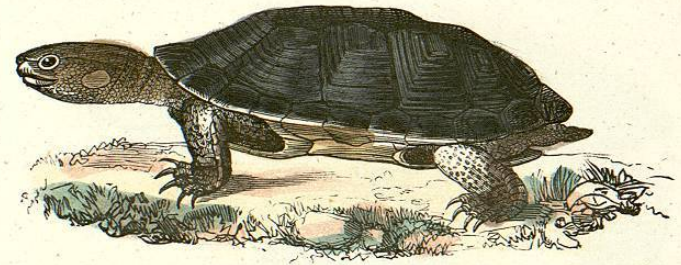
CINOSTERNON PENNSYLVANICUM.



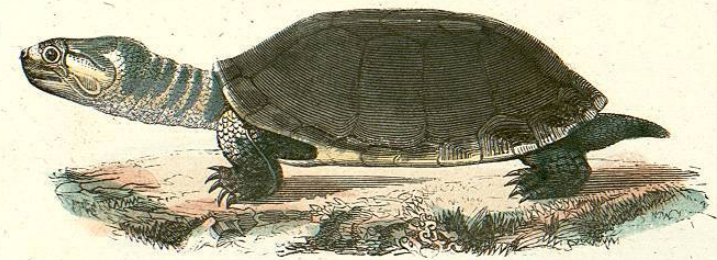
PELTOCEPHALUS TRACAXA.



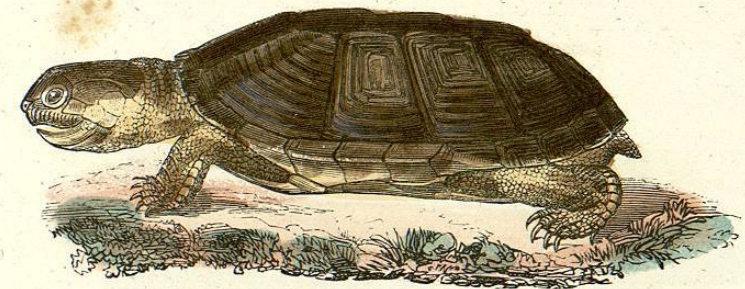
PODOCNEMIS EXPANSA



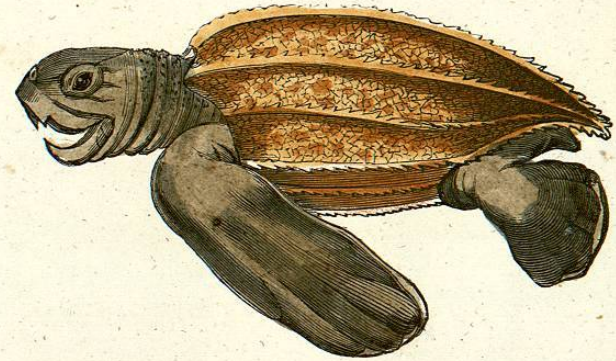
PLATEMYS GIBBA.



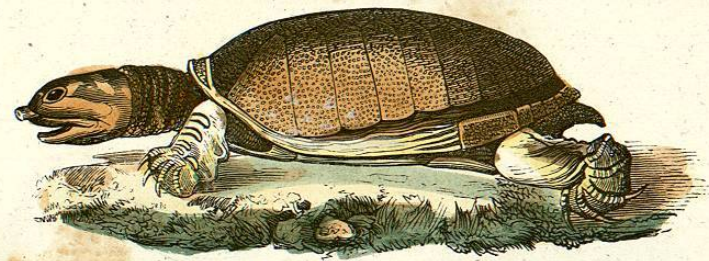
PENTONYX CAPENSIS.



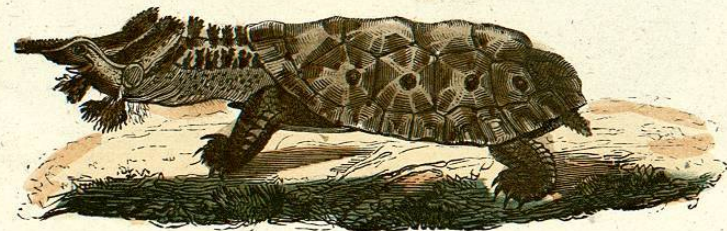
STERNOTHERUS CASTANEUS.



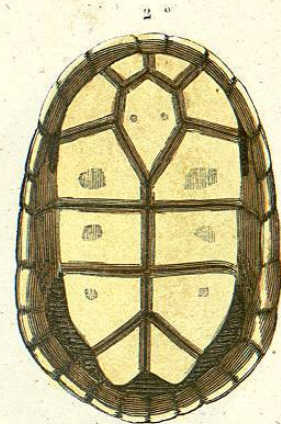
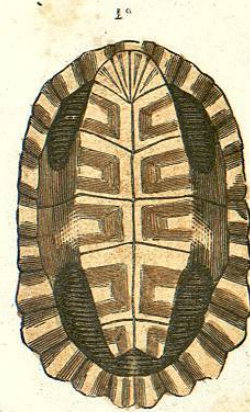
SPHARGIS CORIACEA.



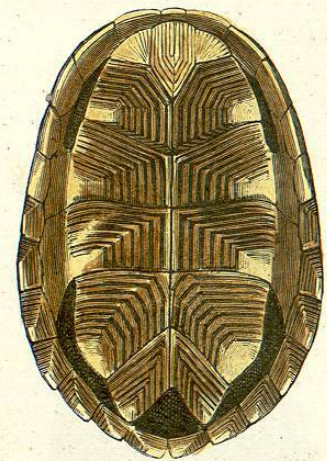
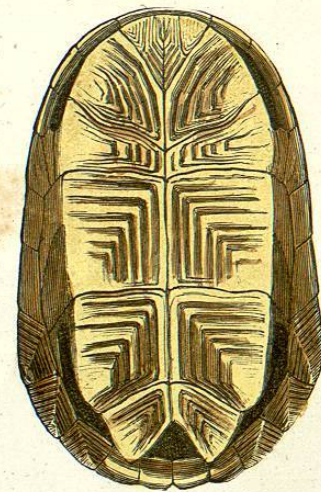
CRYPTOPUS GRANOSUS.



CHELYS MATAMATA JOVEN).

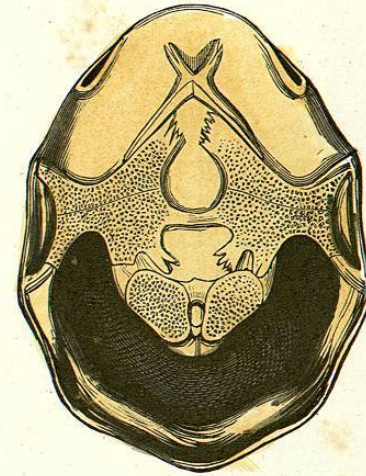


ESTERNON DEL CHELYS MATAMATA JOVEN.—2.^a ID. DEL CHELODINA NOVÆ HOLLANDÆ.

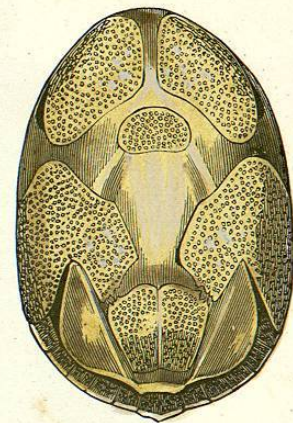


ESTERNON DEL STERNOTHERUS CASTANEUS.—ID. DEL PLATEMYS GIBBA.

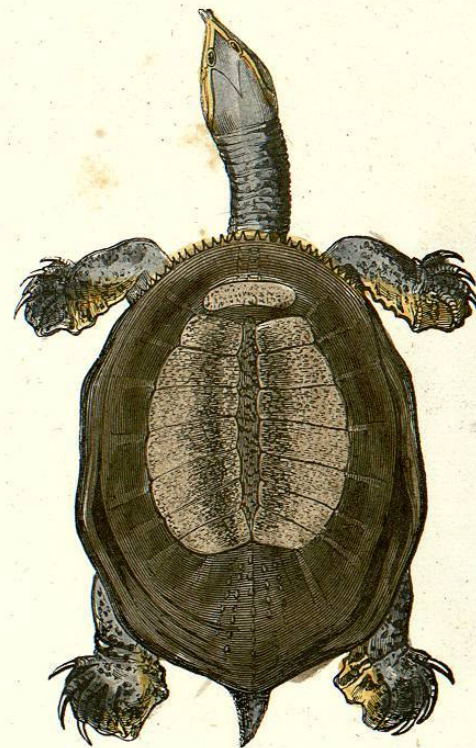
1 .a



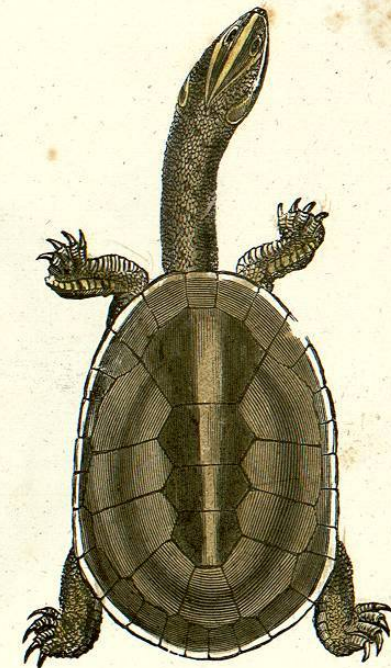
2 .a



1.º ESTERNOX DEL GYMNOPIUS SPINIFERUS.—2.º ID. DEL CRYPTOPIUS GRANOSUS.



CHELODINA NOVÆ HOLLANDÆ.



GYMNOPIUS SPINIFERUS.