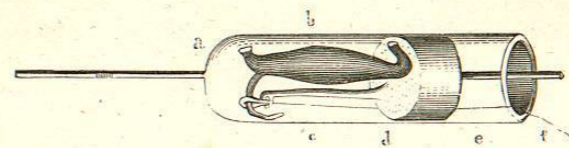


RANA DE MALABAR.

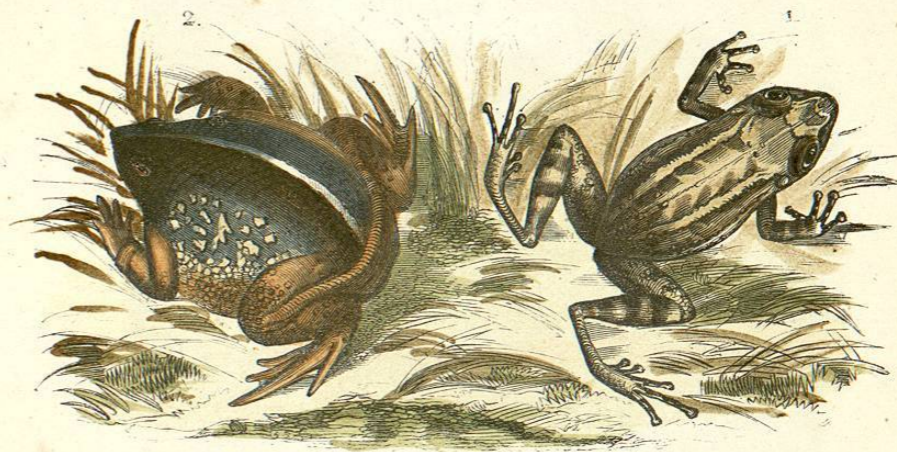


APARATO DEL ESXERIMENTO SVAMMERDAM EXPLICADO EN LA PAGINA 316.



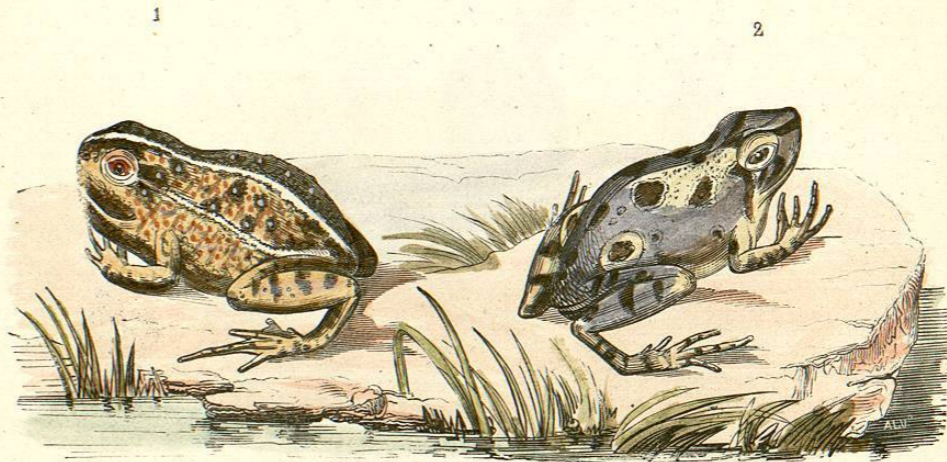
RANHYLLA RUBRA.





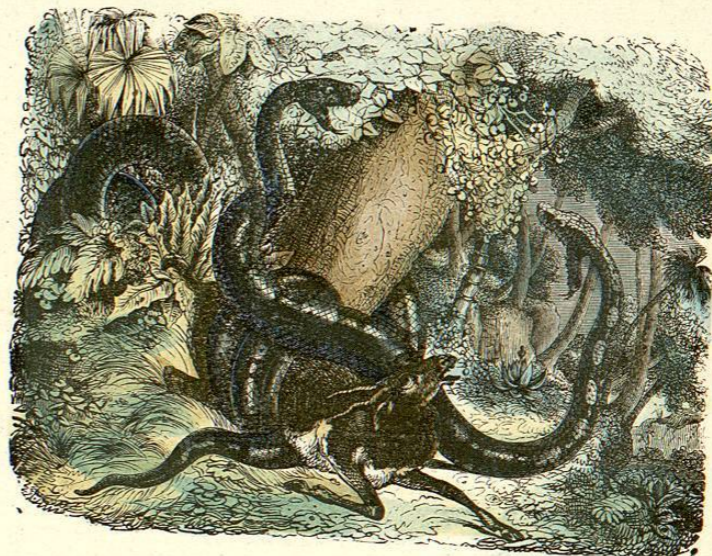
2. RHINOPHYRUS DORSALIS.

1. HILODES DE SANTO DOMINGO.



1. PYXICEPHALUS DELALANDII.

2. PLEURODEMA BIBRONI.



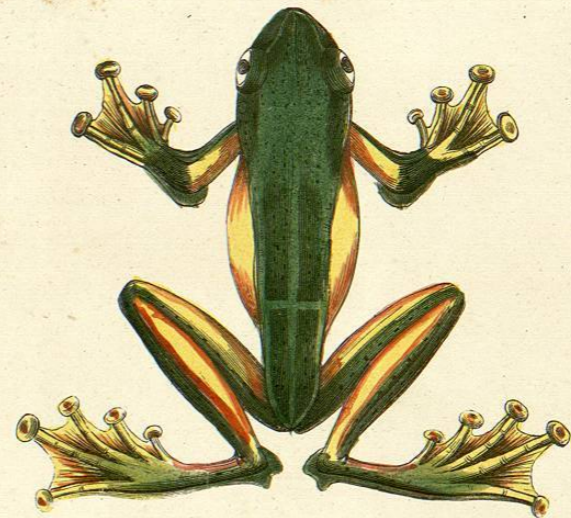
CAZA DE UN VENADO POR LAS SERPIENTES AFRICANAS.



SERPIENTE DE ANTEOJOS



LITORIA FREYCINETI.



RHINACOPHORUS REINWARDT.

