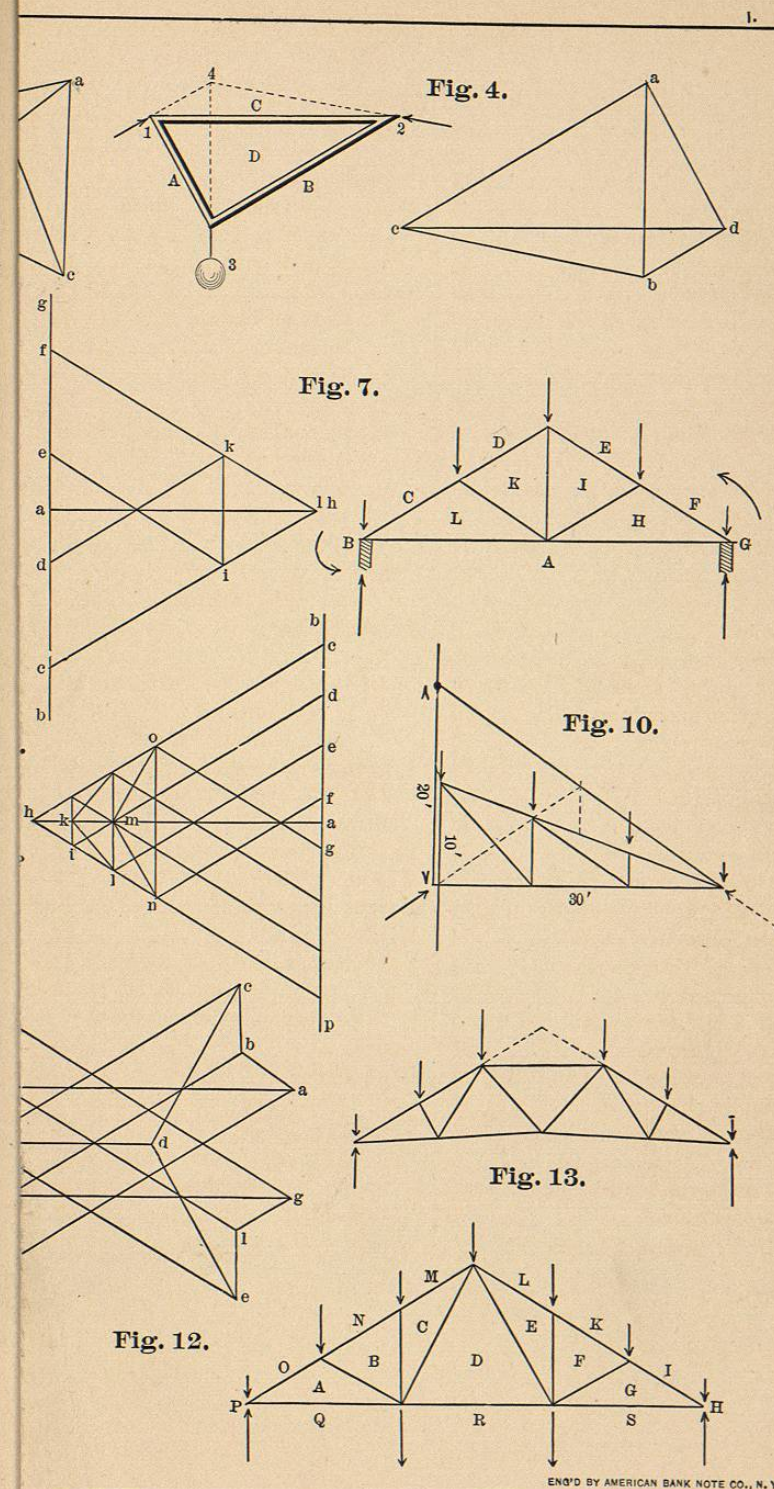


INDEX.

	PAGE		PAGE
ACTION of wind	22	Horizontal thrust indeterminate..	48
Allowable stresses.....	74	" " trusses with....	44
Analysis, order of.....	5	Howe truss.....	20
BEAMS, designing.....	76	IMAGINARY forces, use of.....	50, 58
Bending moment.....	61	Inclined forces, trusses under..	22, 33
" " formula.....	63	" reactions.....	7, 8
" " from equilibri-		Irregular section, moment of re-	
um polygon.....	66	sistance of.....	69
Bending moment on rafter.....	59	I section, moment of resistance,	70
Bracket truss.....	12	JOINTS, loads between.....	50, 59
CAMBERING lower tie, effect of... 14		" loads on all.....	14, 19
Change of diagonal.....	18, 42	KING-POST truss.....	9
Compression and tension, to dis-		LATERAL bracing.....	72
tinguish between.....	6, 32	Load and details.....	72
Compression members, designing	75	" between joints.....	50, 59
Curb roof, truss for.....	33	" on all joints.....	14, 19
" " without roller	34	Lower tie, effect of cambering... 14	
" " with roller.....	36	MATERIALS under stress, action of,	73
Curved members.....	46	" weight of.....	72
Curved roof-truss.....	37	Method of trial and error.....	55
DETAILS.....	77	Moment, bending.....	61
Diagonal, change of.....	18, 42	Moment, formula for bending.... 63	
" reversal of.....	53	" from equilibrium poly-	
Diagonals in same quadrilateral,		gon.....	66
two.....	18	Moment of resistance.....	62
Distribution of load.....	15	" " " irregular sec-	
EQUILIBRIUM polygon.....	64 to 67	tion.....	69
Eyebars.....	76	Moment of resistance, I section... 70	
Example, general.....	56	" " " rectangular	
FLAT roofs, trusses for.....	16	section.....	67
Fink truss.....	13, 54	Moment of resistance, T section... 68	
Forces not applied to joints.... 50, 59		Moments, reactions found by.. 17, 21	
HAMMER-BEAM truss.....	46, 55	Moving load.....	21
" " " amount of		NOTATION.....	2
horizontal thrust	47	ORDER of analysis.....	5

	PAGE		PAGE
PINS.....	77	Triangular truss....	7
Polonceau truss.....	13, 54	Truss conforming to shape of	
Polygon, equilibrium.....	64, 65	equilibrium polygon.....	16, 39
Pratt truss.....	20	Truss for curb or mansard roof...	33
Pressure, wind.....	23	Truss, Fink.....	13, 54
Principle of reciprocity.....	6	" Hammer-beam.....	46, 55
QUEEN-POST truss.....	16	" Howe.....	20
Rafter, bending moment on.....	59	" King-post.....	9
Railroad-station roof.....	53, 56	" Pratt.....	20
Reactions found by moments,		" Polonceau.....	13, 54
.....	17, 21, 24	" Queen-post.....	16
Reactions from wind.....	24, 28, 35	" Scissor.....	44
Reciprocity, principle of.....	6	" Trapezoidal.....	16
Rectangle, moment of resistance,	67	" Warren.....	19
Resistance, moment of.....	62	Truss to conform to roof.....	19
" " " for various		" with roller bearing.....	27, 36
sections.....	67 to 70	Trusses for flat roofs.....	16
Reversal of diagonal.....	53	" " halls.....	18
Roller bearing, effect of.....	27, 36	" under vertical forces.....	7, 16
Roof, truss to conform to.....	19	" " inclined ".....	22, 33
Roof-truss, wooden.....	10	" with horizontal thrust....	44
Scissor truss.....	44	T section, moment of resistance,	68
Snow diagram.....	33	USE of two diagonals in quadri-	
Snow, weight of.....	73	lateral.....	18, 40
Special solutions.....	53	VERTICAL forces, trusses under..	7, 16
Stress, action of materials under..	73	WARREN girder.....	19
" determining kind of.....	6, 32	Weight of materials.....	72
Stresses, allowable.....	74	Wind, action of.....	22
" in triangular frame.....	3, 4	" diagram, reactions, 24, 28, 29, 41	
Superfluous pieces.....	11	" " stresses, 25, 30, 34, 43	
TENSION and compression, to dis-		" on alternate sides, change of	
tinguish between.....	6, 32	stress.....	26, 31, 43
Tension members, designing.....	75	Wind-pressure.....	23
Three forces unknown.....	13, 53	" " on curb or man-	
Trapezoidal truss, equal loads....	16	sard roofs.....	23
" " unequal loads, 16		Wind-pressure on curved roofs..	37
Trial and error, method of.....	55	" " " pitched or ga-	
Triangle of forces.....	1	ble roofs.....	23
" " external forces.....	2, 4	Wooden roof-truss.....	10



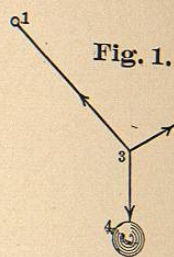


Fig. 1.

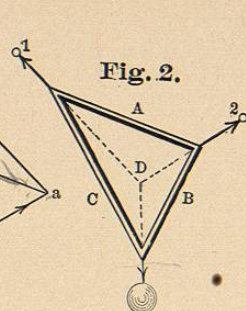


Fig. 2.

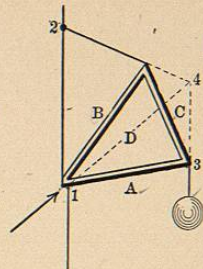


Fig. 3.

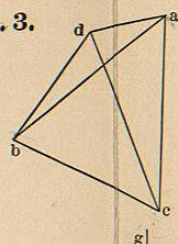


Fig. 4.

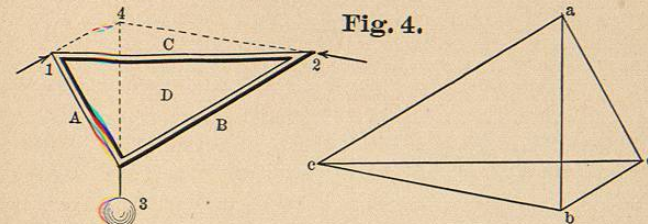


Fig. 5.

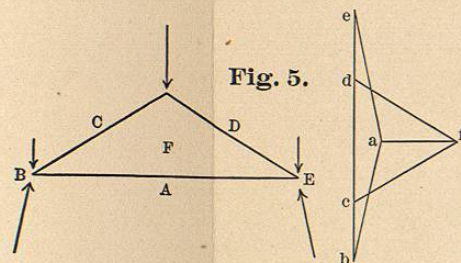


Fig. 6.

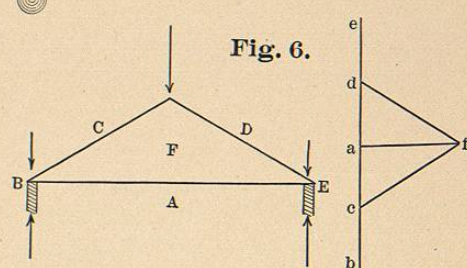


Fig. 7.

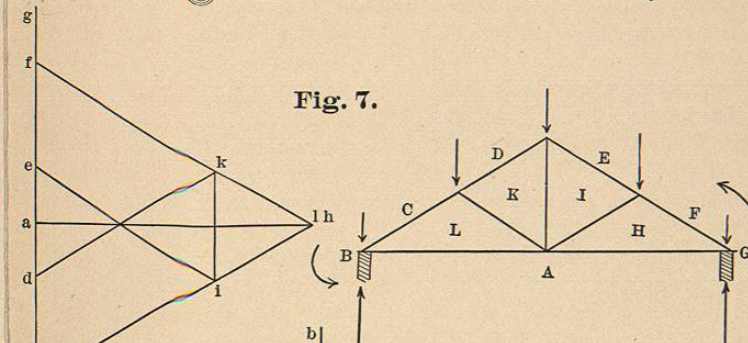


Fig. 8.

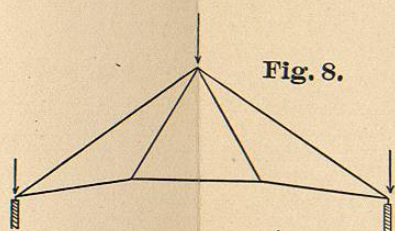


Fig. 9.

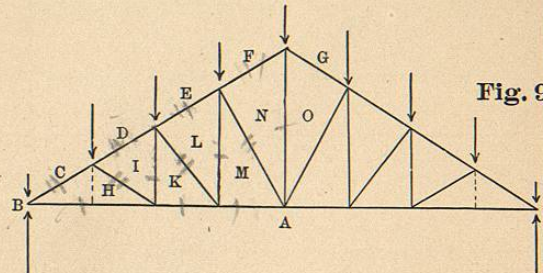


Fig. 10.

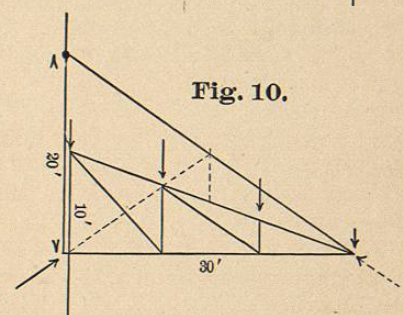


Fig. 11.

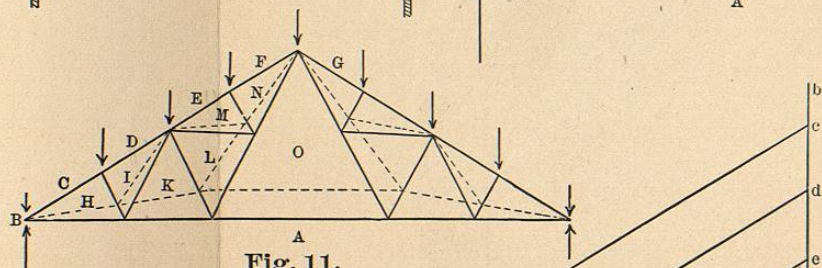


Fig. 12.

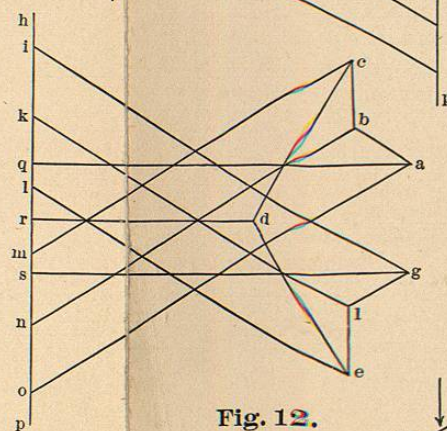
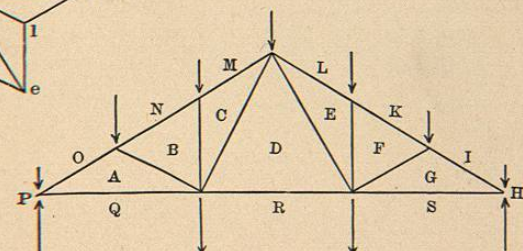
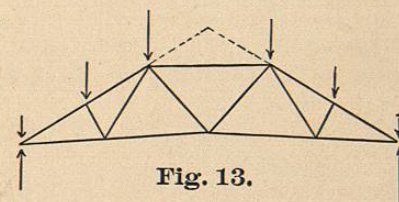


Fig. 13.



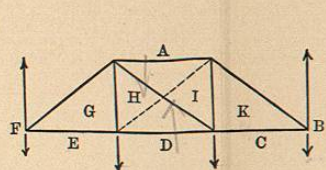


Fig. 14.

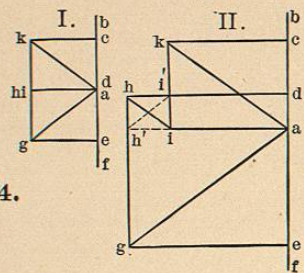


Fig. 15.

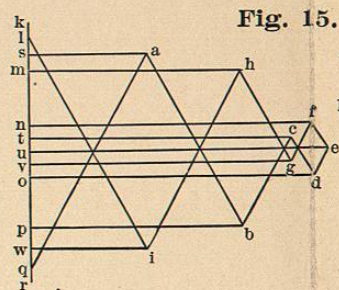


Fig. 16.

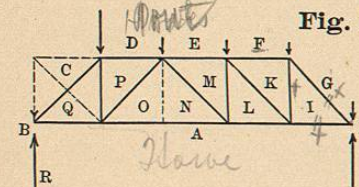


Fig. 17.

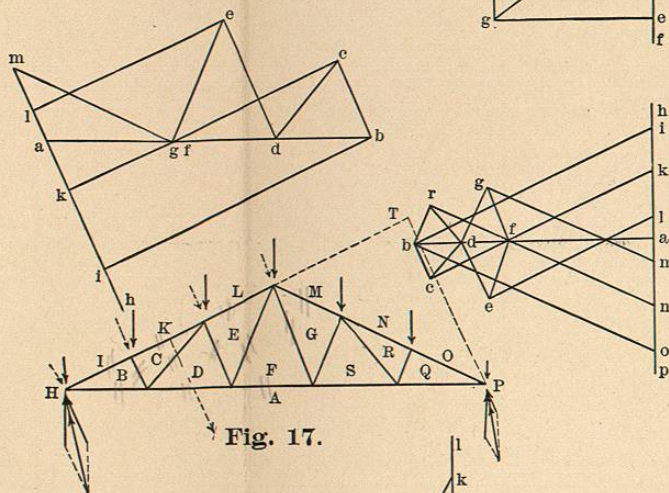
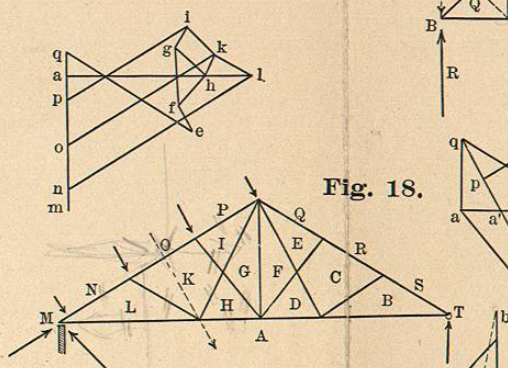


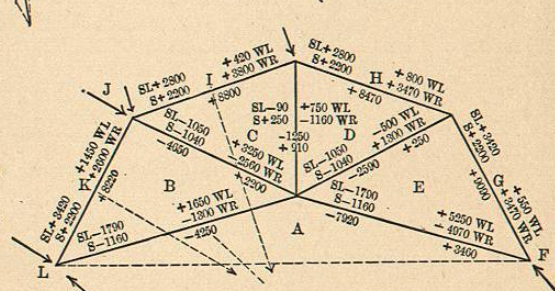
Fig. 18.



W.L.

W.R.

Fig. 19.



W.R.

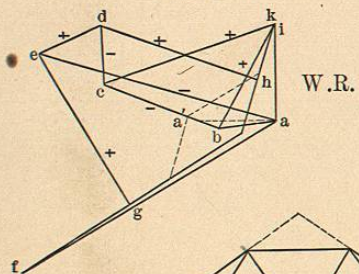
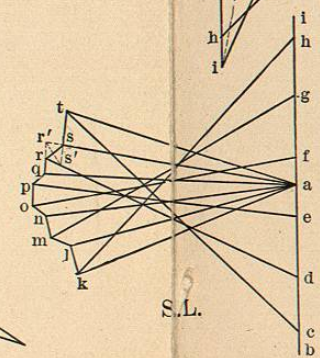


Fig. 21.



S.L.

W.R.

W.L.

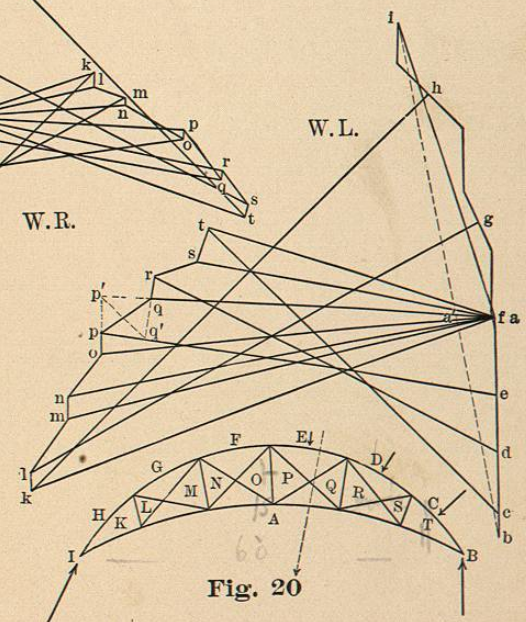


Fig. 20.

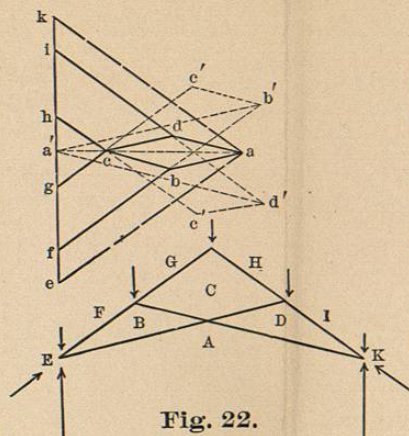


Fig. 23.

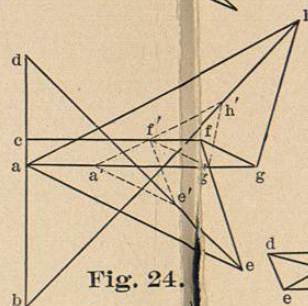
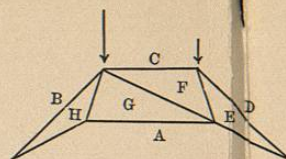
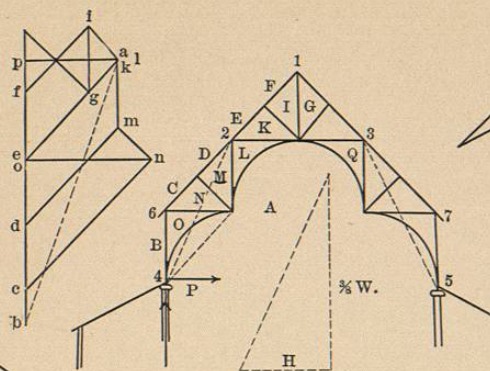


Fig. 24.

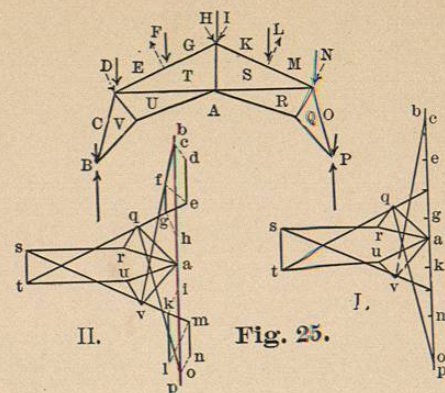


Fig. 25.

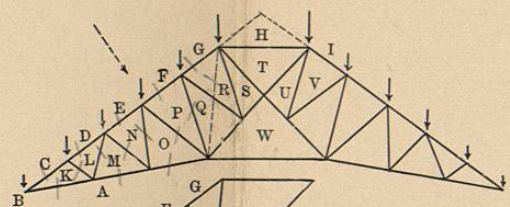


Fig. 26.

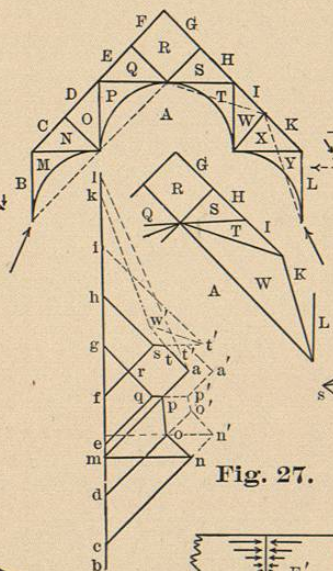


Fig. 27.

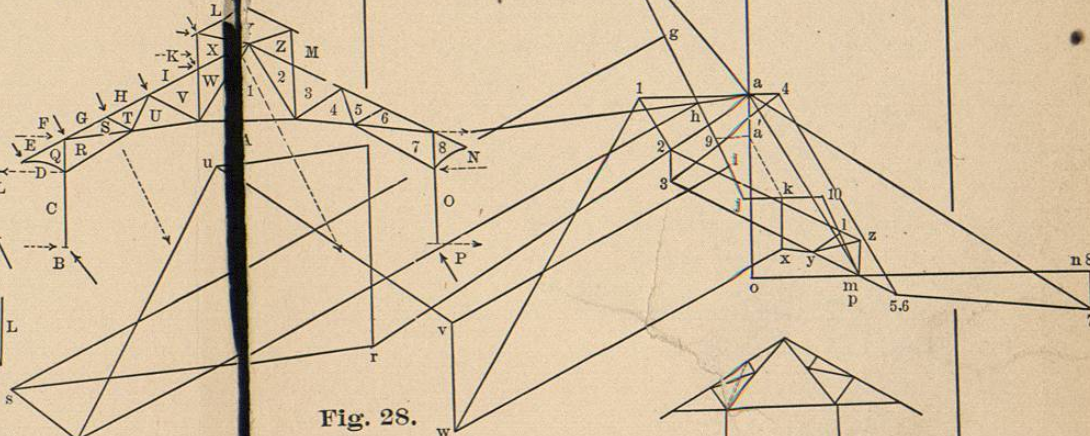


Fig. 28.

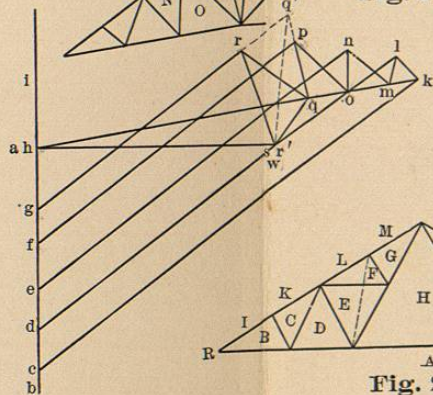


Fig. 29.

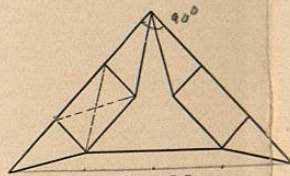
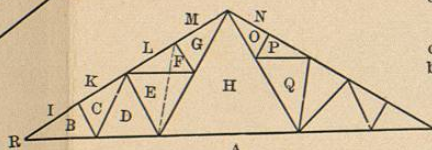


Fig. 30.

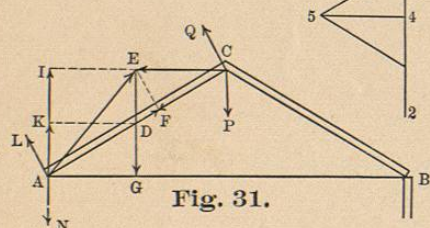


Fig. 31.

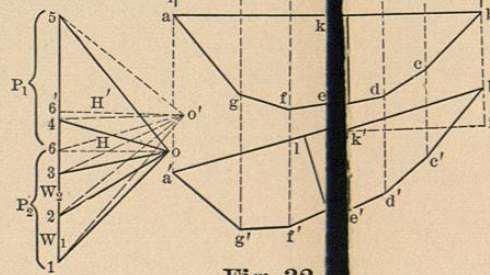
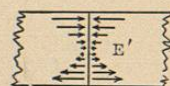
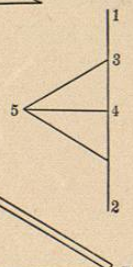


Fig. 32.

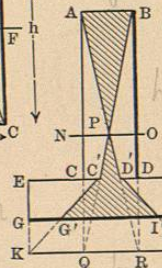
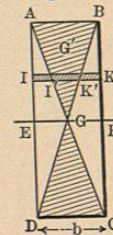
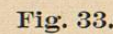


Fig. 34.

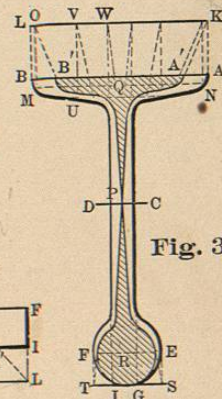


Fig. 35.