

A N E X O S

A N E X O A

**DATOS DE PROFUNDIDAD AL NIVEL ESTÁTICO DE
AGUA SUBTERRÁNEA PROCESADOS CON
EL SISTEMA "GEOUS"**

PROFUNDIDADES AL NIVEL ESTADISTICO DE AGUA SUBTERRANEA EN POZOS DEL ACUIFERO DEL VALLE DE CABORCA, SONORA

No.	C. ANT.	MUM. MACL.	COTA (MSNM)	1966	1970	1971	1972	1973	1974	1975	1976	1977	1978	1979	1980	1981	1982	1983	1984	1985	1986	1987	1988	1989	1990
1	5702	H12A571101	0.000	0.00	0.00	12.74	0.00	13.84	12.57	13.10	14.66	13.27	12.69	0.00	0.00	0.00	0.00	0.00	0.00	0.00	0.00	0.00	0.00	0.00	0.00
2	5803	H12A571104	456.336	0.00	5.40	5.43	5.59	6.60	5.73	5.49	6.71	6.34	6.25	0.00	0.00	6.30	6.73	5.80	4.60	0.00	0.00	0.00	0.00	0.00	0.00
3	5804	H12A570504	436.221	0.00	10.56	10.50	12.70	11.08	11.68	11.74	13.30	13.60	12.51	0.00	0.00	0.00	0.00	0.00	0.00	0.00	0.00	0.00	0.00	0.00	0.00
4	4203	H12A570504	0.000	0.00	0.00	0.00	0.00	0.00	13.12	13.26	13.69	13.80	12.51	0.00	0.00	0.00	0.00	0.00	0.00	0.00	0.00	0.00	0.00	0.00	0.00
5	8804	H12A660412	0.000	0.00	0.00	0.00	0.00	0.00	14.90	15.03	15.36	15.23	15.03	0.00	0.00	0.00	0.00	0.00	0.00	0.00	0.00	0.00	0.00	0.00	0.00
6	7103	H12A660412	335.012	36.72	0.00	31.55	39.59	44.00	63.73	64.33	0.00	0.00	0.00	0.00	0.00	0.00	0.00	0.00	0.00	0.00	0.00	0.00	0.00	0.00	0.00
7	7104	H12A670101	334.176	0.00	44.07	44.39	45.99	46.26	47.56	47.62	48.43	49.42	49.97	47.27	49.35	50.50	48.95	49.72	48.16	48.20	0.00	0.00	0.00	0.00	0.00
8	7108	H12A670102	334.515	0.00	40.35	40.11	39.59	41.50	44.10	44.10	44.83	46.77	45.77	42.71	45.99	48.05	44.51	45.85	42.62	43.80	47.00	81.53	49.70	49.03	49.60
9	7109	H12A670103	347.740	0.00	43.82	44.02	44.85	46.62	48.00	48.37	48.50	50.04	50.39	0.00	0.00	0.00	0.00	0.00	0.00	0.00	0.00	0.00	0.00	0.00	0.00
10	7111	H12A670105	0.000	0.00	0.00	0.00	0.00	0.00	51.85	52.20	52.68	0.00	0.00	0.00	0.00	0.00	0.00	0.00	0.00	0.00	0.00	0.00	0.00	0.00	0.00
11	7117	H12A670105	344.153	0.00	46.71	44.05	44.49	47.00	49.06	48.84	48.75	51.11	51.41	48.63	50.82	52.27	53.45	50.43	47.38	47.00	51.40	52.40	54.00	53.24	53.36
12	7126	H12A670105	322.711	21.27	25.72	26.37	26.49	28.52	29.76	29.55	29.98	31.87	32.46	27.50	31.28	32.10	34.80	29.92	82.23	28.50	32.97	35.00	36.40	35.47	35.40
13	7128	H12A670110	343.971	0.00	29.64	29.71	30.53	32.43	33.57	33.54	34.10	35.90	36.60	31.78	36.06	36.89	39.43	33.80	31.53	32.15	36.75	39.20	40.50	39.36	39.78
14	7130	H12A670110	326.303	0.00	37.85	38.12	40.38	40.98	42.43	42.84	43.05	44.78	45.33	41.83	45.58	46.50	48.79	43.60	41.39	41.15	45.80	48.30	49.50	48.65	48.90
15	7131	H12A670110	341.411	0.00	24.76	25.59	24.58	27.89	28.76	28.57	29.27	31.48	31.90	26.50	31.03	31.92	34.87	38.35	28.10	27.40	32.40	38.20	40.00	34.55	36.00
16	7135	H12A670115	322.711	13.53	0.00	0.00	0.00	0.00	23.79	24.11	23.62	24.86	0.00	0.00	0.00	0.00	0.00	0.00	0.00	0.00	0.00	0.00	0.00	0.00	0.00
17	7137	H12A670115	322.296	0.00	18.53	17.94	19.78	21.24	21.76	21.62	22.77	25.07	25.63	24.74	23.85	24.85	29.87	25.02	21.32	23.10	28.50	30.70	32.40	30.57	31.10
18	7137	H12A670115	347.158	0.00	38.76	39.27	0.00	42.01	43.18	43.47	44.15	45.67	46.18	43.30	46.30	48.46	49.76	46.50	43.93	43.77	46.84	81.61	49.60	49.24	0.00
19	7140	H12A670502	353.900	0.00	26.94	27.12	28.71	30.07	31.30	31.53	32.33	34.40	34.85	29.16	34.00	35.09	38.29	82.43	28.82	29.37	34.00	36.40	36.95	36.21	37.10
20	7148	H12A670502	343.971	27.59	31.47	31.78	32.78	34.90	35.84	35.89	37.33	38.66	39.37	36.58	39.37	36.58	39.63	37.13	40.28	41.30	0.00	0.00	0.00	0.00	0.00
21	7150	H12A670505	345.915	0.00	31.15	31.60	32.56	34.76	0.00	35.00	36.74	38.17	39.63	37.13	40.28	41.30	42.70	39.85	37.32	35.00	38.20	40.50	40.00	0.00	0.00
22	7152	H12A670505	350.362	30.10	33.92	34.47	35.49	37.69	38.41	38.49	39.67	41.46	42.51	40.47	43.56	44.42	45.97	43.25	40.06	38.10	39.87	40.30	41.60	41.84	42.65
23	7156	H12A660801	349.560	66.88	44.82	45.18	46.88	47.07	49.49	49.65	50.10	51.21	52.06	48.71	51.63	53.39	54.55	51.27	48.79	42.60	46.65	49.00	50.10	54.88	55.36
24	7160	H12A670203	390.580	0.00	0.00	0.00	0.00	0.00	43.84	45.82	0.00	0.00	0.00	0.00	0.00	0.00	0.00	0.00	0.00	0.00	0.00	0.00	0.00	0.00	0.00
25	7201	H12A670503	359.289	0.00	57.61	58.00	59.03	60.20	59.32	61.06	60.73	61.16	61.25	64.36	62.11	61.62	62.26	82.35	57.51	53.60	53.90	54.30	54.65	51.87	57.47
26	7204	H12A670503	359.117	0.00	53.24	52.76	53.65	53.15	53.76	53.92	0.00	0.00	0.00	0.00	0.00	0.00	0.00	0.00	0.00	0.00	0.00	0.00	0.00	0.00	0.00
27	7206	H12A670604	375.268	0.00	40.00	41.40	41.55	44.06	44.38	44.54	46.07	47.57	0.00	0.00	0.00	0.00	0.00	0.00	0.00	0.00	0.00	0.00	0.00	0.00	0.00
28	7211	H12A670204	367.426	0.00	54.97	54.76	54.72	55.36	56.03	56.49	56.89	56.80	52.03	51.58	52.27	52.33	53.05	51.95	49.35	46.60	81.93	48.10	47.90	50.01	50.55
29	73012	H12A670204	0.000	66.85	47.95	49.87	49.47	52.00	52.57	52.85	55.30	55.49	56.35	55.43	57.76	58.67	59.44	58.09	54.57	54.57	55.54	56.50	56.80	54.85	56.20
30	8601	H12A670609	334.134	0.00	6.00	6.05	5.64	3.49	4.13	4.15	4.15	0.00	0.00	0.00	0.00	0.00	0.00	0.00	0.00	0.00	0.00	0.00	0.00	0.00	0.00
31	8601	H12A670609	364.330	16.18	19.10	18.55	20.36	20.94	21.02	21.23	22.99	23.64	24.25	30.46	23.90	25.84	0.00	0.00	0.00	0.00	0.00	0.00	0.00	0.00	0.00
32	8706	H12A670614	363.911	36.68	40.28	41.31	42.41	43.02	44.41	44.61	0.00	0.00	0.00	0.00	0.00	0.00	0.00	0.00	0.00	0.00	0.00	0.00	0.00	0.00	0.00
33	8711	H12A670511	376.117	41.22	42.38	42.74	42.74	43.28	43.63	43.90	44.15	46.00	46.57	46.49	47.15	47.29	47.54	46.46	49.73	45.33	44.10	45.00	45.13	0.00	0.00
34	8713	H12A670511	354.560	0.00	32.80	33.37	33.44	35.96	36.51	37.78	38.47	38.93	41.50	43.31	44.57	43.05	40.37	38.54	37.90	38.54	37.90	39.30	40.00	40.95	43.45
35	8716	H12A660404	379.720	0.00	36.48	37.16	37.91	38.38	39.99	40.57	0.00	0.00	0.00	0.00	0.00	0.00	0.00	0.00	0.00	0.00	0.00	0.00	0.00	0.00	0.00
36	5502	H12A660204	271.100	0.00	37.70	0.00	41.00	42.07	46.15	46.63	44.50	46.97	47.18	0.00	0.00	0.00	0.00	0.00	0.00	0.00	0.00	0.00	0.00	0.00	0.00
37	6904	H12A660204	259.576	0.00	51.80	53.37	54.90	57.05	60.02	62.38	65.12	67.57	69.76	70.40	70.35	71.79	75.20	76.43	73.80	72.52	71.23	81.39	77.30	79.05	82.40
38	6906	H12A660206	0.000	0.00	0.00	0.00	0.00	0.00	56.96	58.68	61.03	62.52	64.45	64.48	68.00	67.86	70.13	73.17	70.67	73.50	76.50	79.43	79.70	83.50	82.40
39	6909	H12A660214	0.000	0.00	28.47	29.59	31.71	32.49	35.70	38.26	0.00	0.00	0.00	0.00	0.00	0.00	0.00	0.00	0.00	0.00	0.00	0.00	0.00	0.00	0.00
40	6911	H12A660212	230.655	0.00	0.00	0.00	0.00	0.00	42.38	44.52	47.98	0.00	0.00	0.00	0.00	0.00	0.00	0.00	0.00	0.00	0.00	0.00	0.00	0.00	0.00
41	6918	H12A660212	258.480	0.00	0.00	14.27	17.68	0.00	0.00	0.00	0.00	0.00	0.00	0.00	0.00	0.00	0.00	0.00	0.00	0.00	0.00	0.00	0.00	0.00	0.00
42	6921	H12A660212	258.480	0.00	44.59	47.73	48.66	51.84	54.05	58.17	61.05	63.88	66.32	65.50	67.15	71.94	72.07	71.91	70.22	70.32	69.50	73.05	74.30	75.96	78.80
43	6923	H12A660214	252.356	0.00	40.75	43.71	44.98	49.80	49.80	52.61	55.64	59.28	61.10	59.73	64.90	65.10	68.00	67.39	65.87	85.05	67.60	69.46	72.75	73.05	76.50
44	6925	H12A660214	258.400	40.29	46.56	49.02	50.20	54.08	0.00	59.62	62.69	66.56	68.43	66.58	69.90	72.61	72.47	69.42	68.78	68.34	72.39	86.80	80.78	80.50	80.50

PROFUNDIDADES AL NIVEL ESTADISTICO DE AGUA SUBTERRANEA EN POZOS DEL ACUIFERO DEL VALLE DE CABORCA, SONORA

No.	C. ANT.	MUM.	MACL.	COTA (MSNM)	1966	1970	1971	1972	1973	1974	1975	1976	1977	1978	1979	1980	1981	1982	1983	1984	1985	1986	1987	1988	1989	1990	
185	1727			18.574	0.00	21.73	20.95	21.58	23.17	23.19	0.00	24.13	26.43	26.57	23.11	22.42	22.91	22.34	21.87	18.77	22.25	0.00	0.00	0.00	0.00	0.00	0.00
190	1728			23.705	0.00	0.00	23.67	23.07	23.60	24.23	24.86	23.87	22.88	24.28	23.80	23.37	0.00	26.22	23.76	23.84	26.28	25.93	26.60	26.85	26.20	26.60	0.00
191	1730			21.216	0.00	22.25	21.09	24.18	24.76	24.97	22.30	22.17	22.61	23.90	24.16	24.17	24.38	25.98	25.59	25.20	24.67	24.50	25.00	25.00	24.70	26.00	0.00
192	1732			35.050	0.00	20.36	21.09	21.28	21.58	22.03	22.37	0.00	22.75	23.32	23.87	24.83	24.19	24.72	28.00	26.70	25.62	26.20	26.20	26.26	26.00	26.15	0.00
193	1736			0.000	0.00	0.00	15.23	16.00	14.00	16.00	16.65	16.69	16.90	17.83	0.00	0.00	0.00	0.00	0.00	0.00	0.00	0.00	0.00	0.00	0.00	0.00	0.00
194	1802			44.407	0.00	26.37	27.55	0.00	24.32	0.00	26.30	26.36	24.54	27.25	27.25	29.30	0.00	0.00	0.00	0.00	0.00	0.00	0.00	0.00	0.00	0.00	0.00
195	1804			46.466	0.00	28.36	29.57	30.00	25.46	31.67	32.32	28.00	26.10	28.75	28.29	32.00	32.32	32.53	31.02	34.63	39.36	38.71	39.10	38.68	38.60	39.02	
196	1806			50.258	0.00	25.23	24.20	24.46	24.16	25.15	25.36	25.45	0.00	27.13	26.95	27.64	0.00	0.00	0.00	0.00	0.00	0.00	0.00	0.00	0.00	0.00	
197	1807			0.000	0.00	0.00	11.31	12.14	11.69	12.38	12.51	12.89	12.61	12.80	12.95	0.00	0.00	0.00	0.00	0.00	0.00	0.00	0.00	0.00	0.00	0.00	
198	3104			10.360	0.00	6.67	7.51	7.79	8.14	9.24	8.33	8.46	8.38	8.52	8.60	8.62	8.85	8.70	8.83	8.78	8.92	9.10	9.34	9.20	9.50	9.50	
199	3107			26.023	0.00	19.77	20.59	20.88	22.14	22.25	22.00	22.56	22.46	23.18	22.94	24.90	27.20	26.52	26.93	26.56	27.40	26.64	25.14	24.93	26.08	27.60	
200	3201			32.086	0.00	22.83	23.72	24.27	23.95	27.10	26.96	0.00	0.00	0.00	0.00	0.00	0.00	0.00	0.00	0.00	0.00	0.00	0.00	0.00	0.00	0.00	
201	3205			28.051	0.00	21.43	22.85	23.03	22.62	24.80	23.63	0.00	0.00	0.00	0.00	0.00	0.00	0.00	0.00	0.00	0.00	0.00	0.00	0.00	0.00	0.00	
202	3206			26.903	0.00	21.20	22.75	23.98	23.56	23.75	26.88	24.42	25.20	26.50	27.20	28.11	30.10	30.10	30.10	30.10	30.10	30.10	30.10	30.10	30.10	30.10	0.00
203	3212			17.984	0.00	0.00	17.47	17.39	15.59	15.92	18.53	19.30	19.53	19.36	19.31	20.07	20.12	20.76	19.80	20.23	20.62	20.66	20.76	20.48	20.95	21.06	
204	3215			38.361	0.00	22.88	24.42	24.50	26.09	29.05	28.74	28.20	30.36	30.08	31.25	36.04	31.23	32.06	32.50	33.76	35.78	36.21	36.64	37.08	37.10	38.65	
205	3222			42.749	0.00	26.29	27.33	27.66	29.04	30.59	32.85	32.82	34.61	35.36	0.00	0.00	0.00	0.00	0.00	0.00	0.00	0.00	0.00	0.00	0.00	0.00	
206	3219			48.697	0.00	0.00	0.00	30.90	32.97	34.43	36.29	33.90	37.42	37.94	38.98	39.90	40.83	0.00	0.00	0.00	0.00	0.00	0.00	0.00	0.00	0.00	
207	3227			0.000	0.00	23.14	24.41	24.77	25.66	26.64	27.19	28.11	28.54	29.61	32.80	31.80	32.44	32.74	33.36	34.00	34.50	35.79	36.66	37.50	39.20	35.70	
208	3206			63.597	0.00	29.92	30.69	31.79	32.63	34.33	35.60	36.28	38.40	39.57	40.53	43.35	44.60	47.39	47.80	49.00	50.75	51.55	53.92	56.04	57.05	58.80	
209	3306			56.319	0.00	29.66	31.20	31.74	32.96	34.18	36.10	36.54	39.13	40.24	40.98	45.40	44.90	48.03	0.00	45.93	45.60	46.18	47.24	50.90	50.70	50.40	
210	3307			68.096	0.00	29.66	31.20	31.74	32.73	34.18	36.10	36.54	39.13	40.24	40.98	45.40	44.90	48.03	0.00	45.93	45.60	46.18	47.24	50.90	50.70	50.40	
211	3308			64.505	0.00	29.66	31.20	31.74	32.73	34.18	36.10	36.54	39.13	40.24	40.98	45.40	44.90	48.03	0.00	45.93	45.60	46.18	47.24	50.90	50.70	50.40	
212	3309			57.780	0.00	28.53	30.08	30.88	32.85	33.83	35.98	36.41	38.02	39.48	41.48	43.76	45.35	47.32	47.95	47.65	50.80	51.50	53.85	55.88	52.45	52.20	
213	3312			49.945	0.00	27.72	29.01	29.60	31.16	32.72	34.76	36.08	39.22	40.00	40.80	43.10	43.50	43.70	44.00	44.90	49.97	48.70	50.48	51.97	52.48	53.90	
214	3313			60.213	0.00	26.35	29.01	29.60	31.16	32.72	34.76	36.08	39.22	40.00	40.80	43.10	43.50	43.70	44.00	44.90	49.97	48.70	50.48	51.97	52.48	53.90	
215	3314			60.678	0.00	0.00	0.00	0.00	0.00	0.00	0.00	0.00	0.00	0.00	0.00	0.00	0.00	0.00	0.00	0.00	0.00	0.00	0.00	0.00	0.00		
216	3315			64.587	0.00	32.43	33.64	37.60	36.38	38.02	75.65	39.10	42.89	45.20	46.13	49.70	51.50	53.92	53.98	54.62	57.45	58.13	61.39	63.00	63.85	65.30	
217	3316			0.000	0.00	30.23	32.26	33.00	34.70	37.86	39.36	40.24	42.43	44.62	45.53	47.90	50.20	52.75	54.22	52.74	57.28	57.83	61.06	63.30	64.82	66.08	
218	3319			46.594	0.00	29.96	29.80	32.49	32.31	35.94	38.81	38.70	41.02	43.90	0.00	0.00	0.00	0.00	0.00	0.00	0.00	0.00	0.00	0.00	0.00	0.00	
219	3323			57.621	0.00	21.96	22.79	23.20	23.44	24.46	27.75	26.98	27.72	27.75	29.23	28.39	28.60	29.34	30.02	30.22	33.32	33.64	34.16	35.90	36.00	37.50	
220	3325			70.940	0.00	36.99	36.26	38.68	38.33	39.86	42.85	43.21	45.10	46.55	47.85	50.59	51.65	0.00	0.00	0.00	0.00	0.00	0.00	0.00	0.00	0.00	
221	3327			53.169	0.00	0.00	28.90	29.94	28.85	30.03	31.33	32.26	33.90	34.64	35.46	37.14	38.90	39.81	40.22	40.46	43.10	43.63	45.16	46.20	80.86	48.70	
222	3402			69.705	0.00	31.48	32.25	32.83	33.52	34.62	36.77	0.00	36.84	35.73	0.00	0.00	0.00	0.00	0.00	0.00	0.00	0.00	0.00	0.00	0.00	0.00	
223	3402			0.000	0.00	0.00	0.00	0.00	0.00	0.00	0.00	0.00	0.00	0.00	0.00	0.00	0.00	0.00	0.00	0.00	0.00	0.00	0.00	0.00	0.00		
224	3404			69.219	0.00	29.95	30.42	31.60	32.54	33.95	35.35	35.50	36.62	38.83	39.36	42.35	43.10	0.00	0.00	0.00	0.00	0.00	0.00	0.00	0.00	0.00	
225	3406			79.240	0.00	31.66	32.55	33.65	35.20	35.86	36.76	38.00	40.70	41.52	43.61	45.90	47.20	49.60	50.05	51.00	54.25	54.95	56.20	57.00	58.25	57.30	
226	3407			70.150	0.00	33.63	35.49	37.40	36.46	38.42	41.40	0.00	0.00	0.00	0.00	0.00	0.00	0.00	0.00	0.00	0.00	0.00	0.00	0.00	0.00	0.00	
227	3407			86.296	0.00	35.43	37.13	39.60	39.02	74.50	41.83	42.00	43.45	45.94	46.59	47.75	49.30	52.60	53.34	53.90	56.18	57.48	59.14	61.23	80.94	63.00	
228	3410			82.364	0.00	40.06	42.54	45.40	45.93	44.07	47.37	48.05	50.30	52.70	54.80	57.05	60.30	62.55	63.90	62.54	67.01	67.16	69.10	70.50	71.90	71.60	
229	3424			77.141	0.00	41.21	40.96	44.20	42.58	43.70	46.00	49.78	50.39	51.27	0.00	0.00	0.00	0.00	0.00	0.00	64.00	67.23	68.10	70.90	73.56	76.70	

PROFUNDIDADES AL NIVEL ESTADICO DE AGUA SUBTERRANEA EN POZOS DEL ACUIFERO DEL VALLE DE CABORCA, SONORA

Table with columns: No., C. ANT., NUM. MAQ., DOTA (MS/M), 1966-1990. It contains depth data for 326 wells from 1966 to 1990. Values range from 0.00 to 119.00 meters.

PROFUNDIDADES AL NIVEL ESTÁTICO DE AGUA SUBTERRANEA EN POZOS DEL ACUIFERO DEL VALLE DE CABOCCA, SONORA

Table with columns: No., C. ANT., NUM. NACL., COTA (MSNM), and years from 1966 to 1990. The table contains depth measurements for various wells over a 25-year period.

A N E X O B

**REPRESENTACION GRAFICA DE LOS NIVELES
ESTATICOS DE ALGUNOS POZOS PROCESADOS CON
EL SISTEMA "GEOUS"**

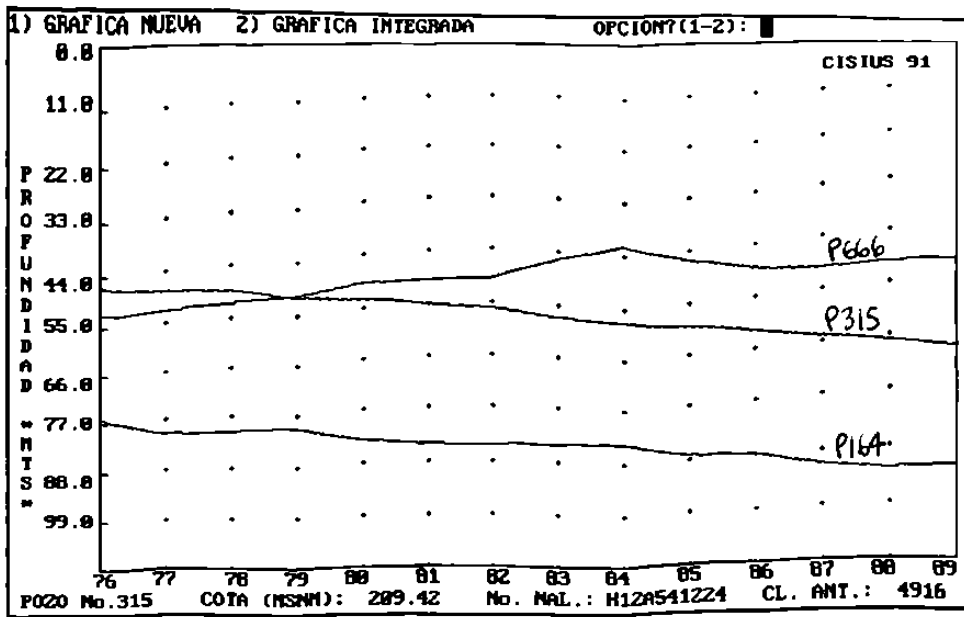


Fig. B.1.- Se muestran los niveles estáticos para los pozos denominados en el estudio, como No.666, 164 y 315 de las zonas Oriente, Central y Poniente, respectivamente. Según se pueden ver en el Plano No.3, se encuentran cercanos al cauce del Río Asunción, los cuales resultan beneficiados con la presencia de buenos escurrimientos en dicho cauce.

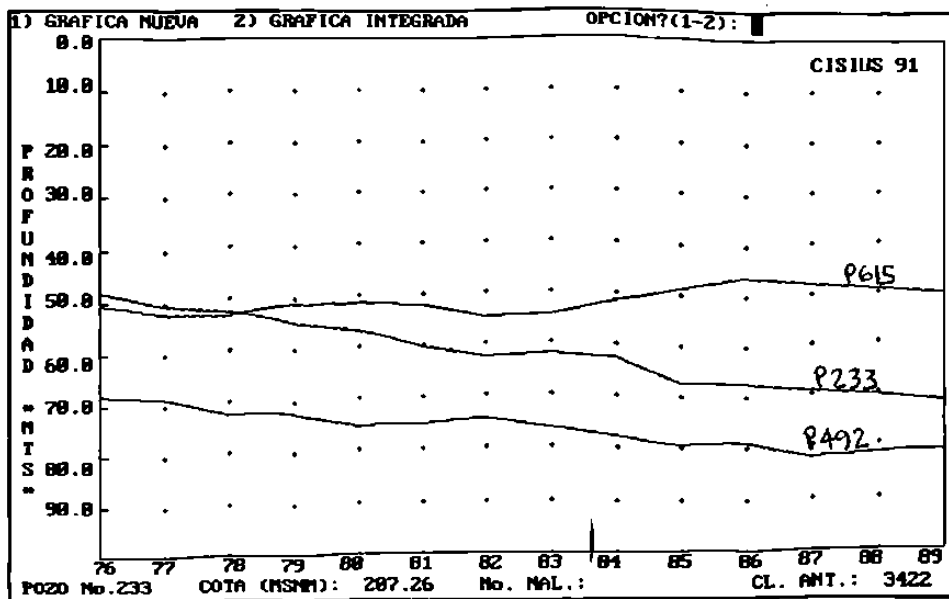


Fig.B.2. Los niveles estáticos que se muestran en este caso, pertenecen a los pozos denominados como, No. 615, 492 y 233, correspondientes a las zonas Oriente, Central y Poniente, respectivamente. Estos pozos, a diferencia de la grafica anterior, se encuentran distantes del cauce del Río Asunción según el Plano No.3.

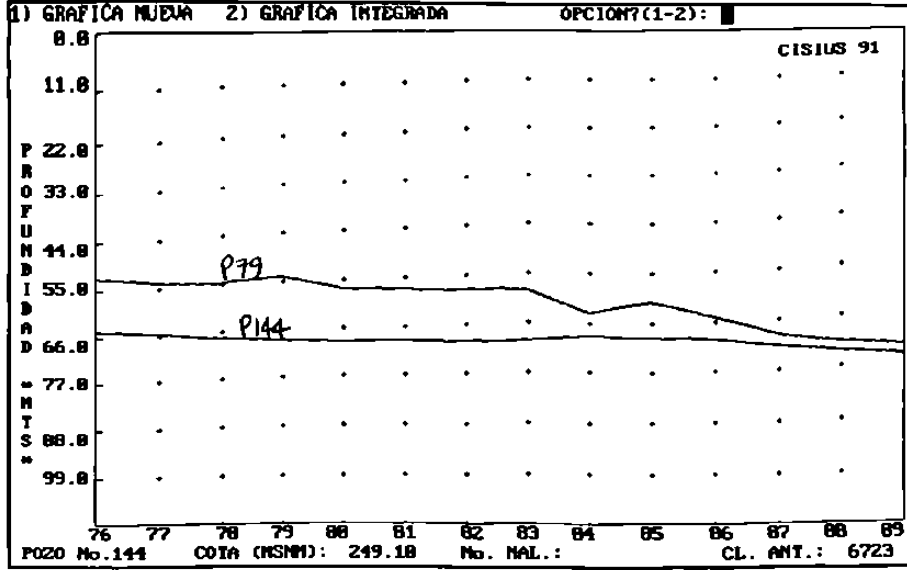


Fig.B.3. Se muestran los niveles estáticos para los pozos denominados, No.79 y 144, para las zonas Oriente y Central. Estos pozos se encuentran cerca de las áreas de abatimiento detectadas en el estudio dentro del color rojo y azul fuerte para las zonas mencionadas.

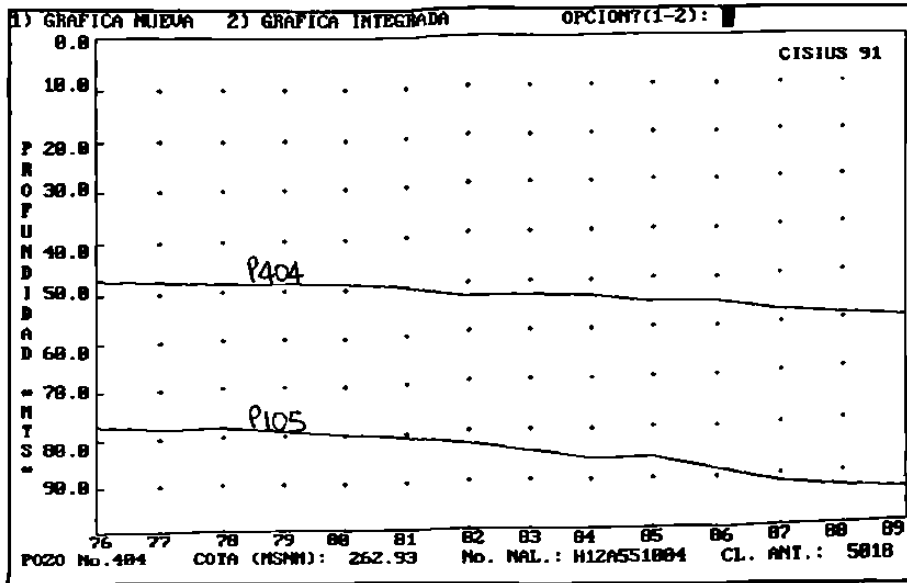


Fig. B.4. Niveles estáticos para los pozos denominados, No.105 y 404, ambos para la zona Central. Estos pozos, se encuentran distantes del cauce del Río, y dentro de las áreas de abatimiento detectadas con color morado y verde fuerte, respectivamente.

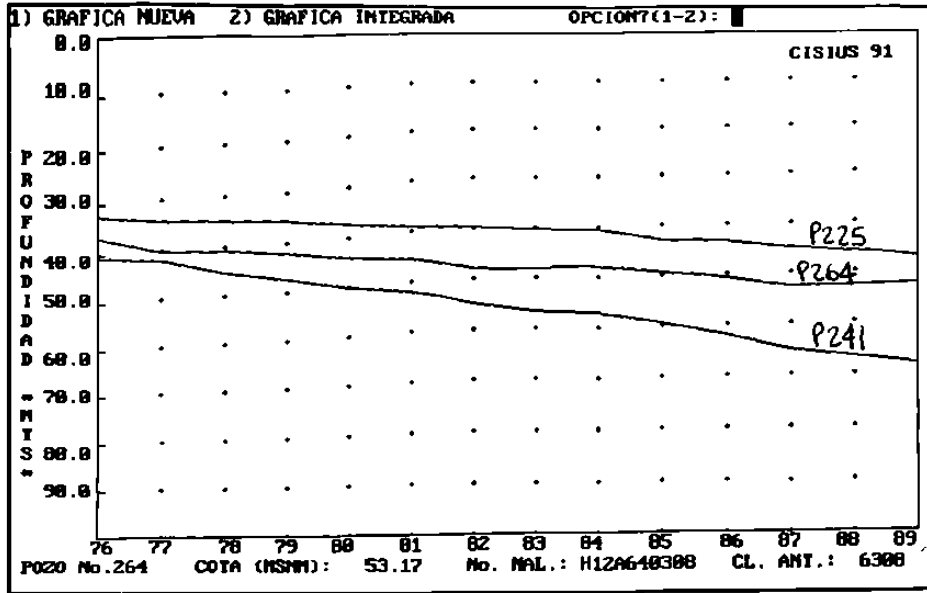


Fig. B.5. Niveles estáticos para los pozos denominados, No. 241, 225 y 264, todos para la zona Poniente del acuífero, de los cuales solamente el No.264 se encuentra cercano al cauce del Rfo Asunción y los otros dos se encuentran distantes de éste.

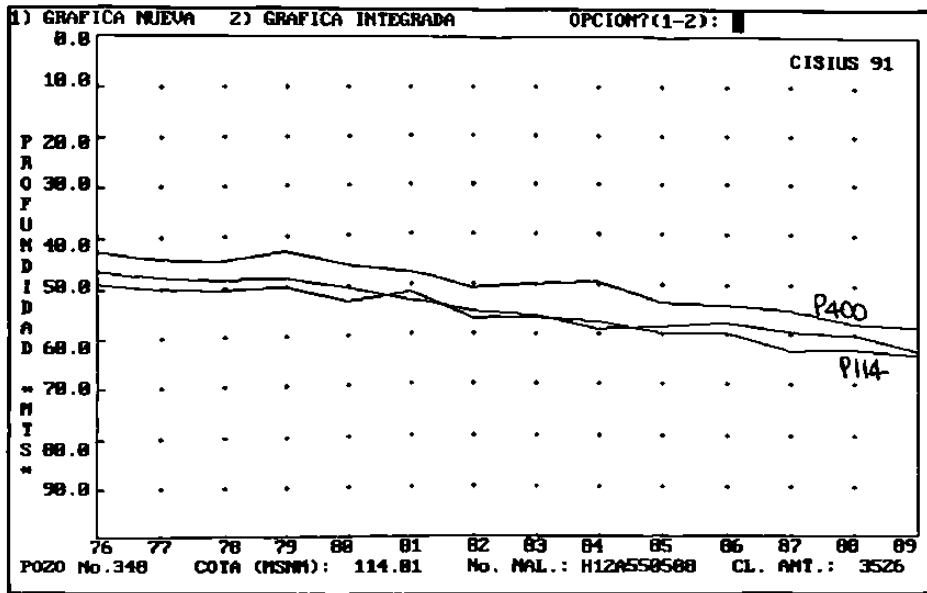
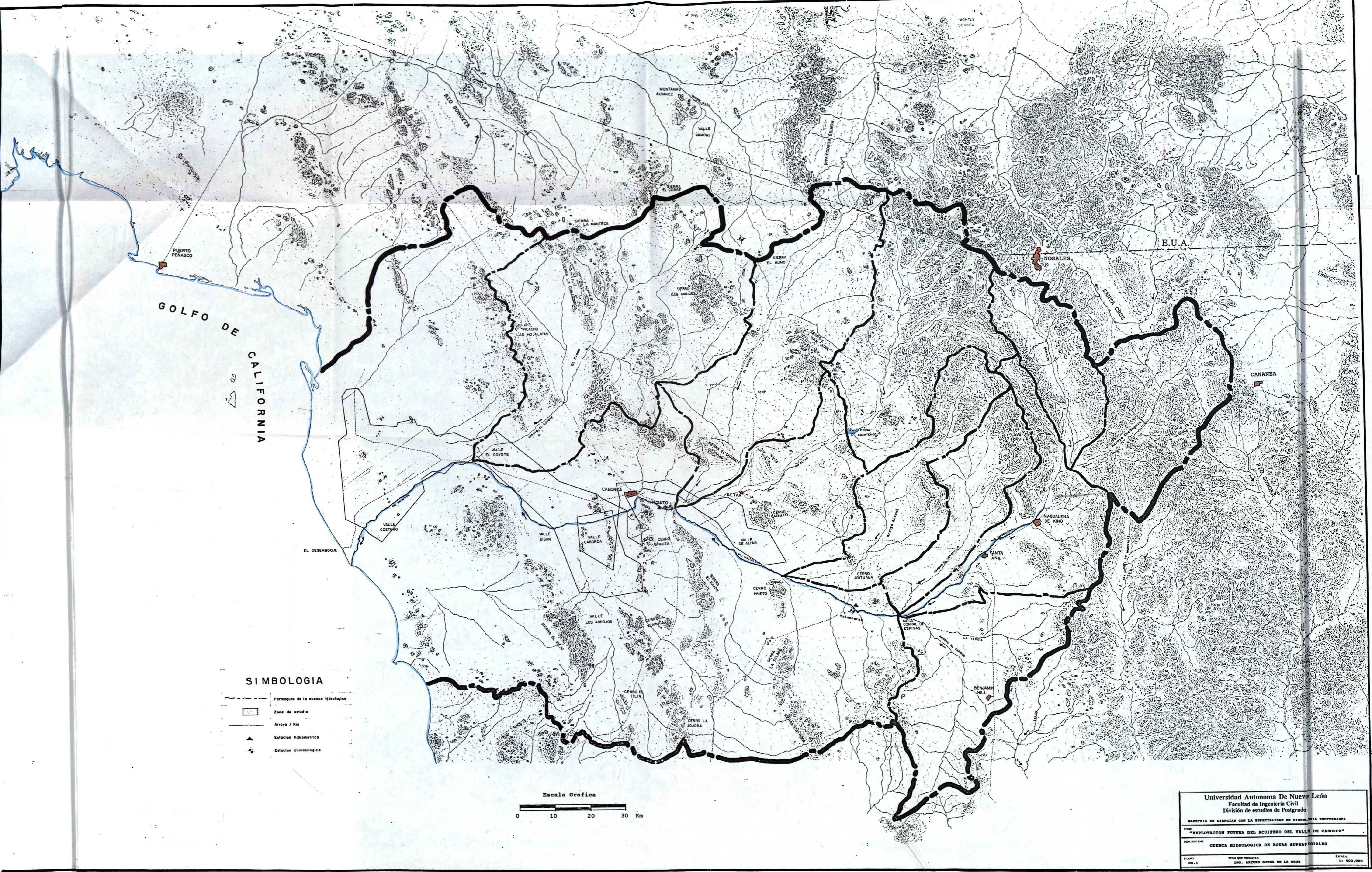


Fig. B.6. Se muestran los niveles estáticos para los pozos denominados, No. 114, 400 y 348, para las zona Poniente casi conectados con el inicio de la zona central, excepto el No. 400 que se encuentra casi al centro de la primer zona.

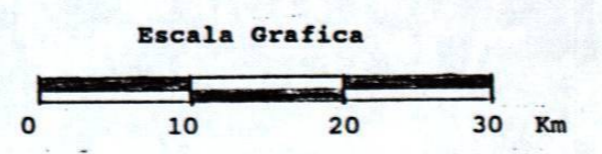
ANEXO DE PLANOS



GOLFO DE CALIFORNIA

SIMBOLOGIA

-  Partagués de la cuenca hidrologica
-  Zona de estudio
-  Arroyo / Rio
-  Estacion hidrometrica
-  Estacion climatologica



Universidad Autonoma De Nuevo León
 Facultad de Ingeniería Civil
 División de estudios de Postgrado

TESIS
 "EXPLORACION FUTURA DEL ACUIFERO DEL VALLE DE CABORCA"

DESCRIPCION:
 CUENCA HIDROLOGICA DE AGUAS SUPERFICIALES

PLANO
 NO. 1 TESIS QUE PRESENTA: ING. ARTURO QUESA DE LA CRUZ ESCALA: 1: 500,000