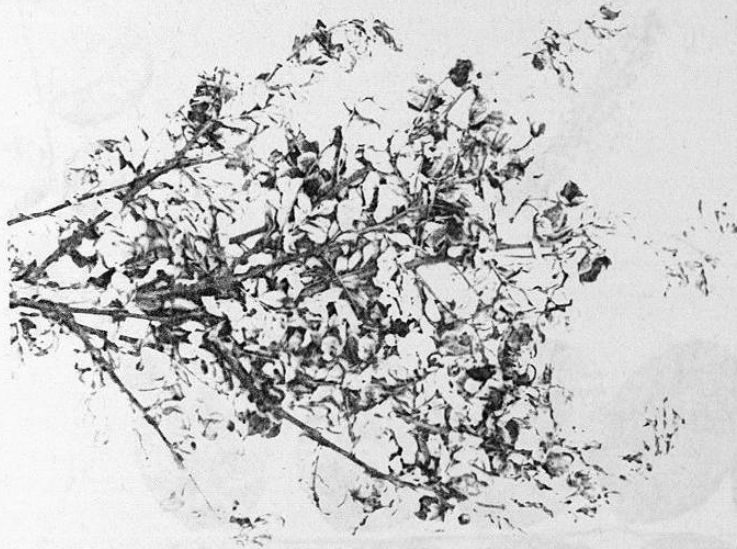
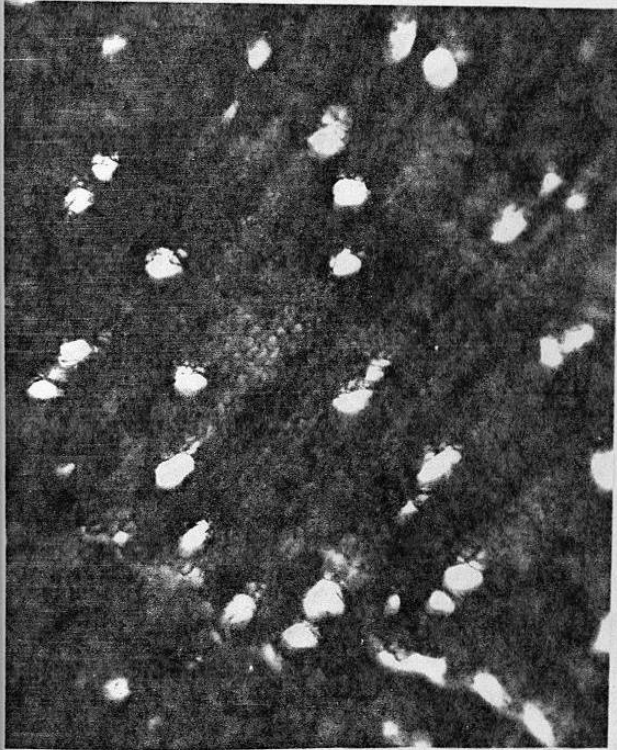


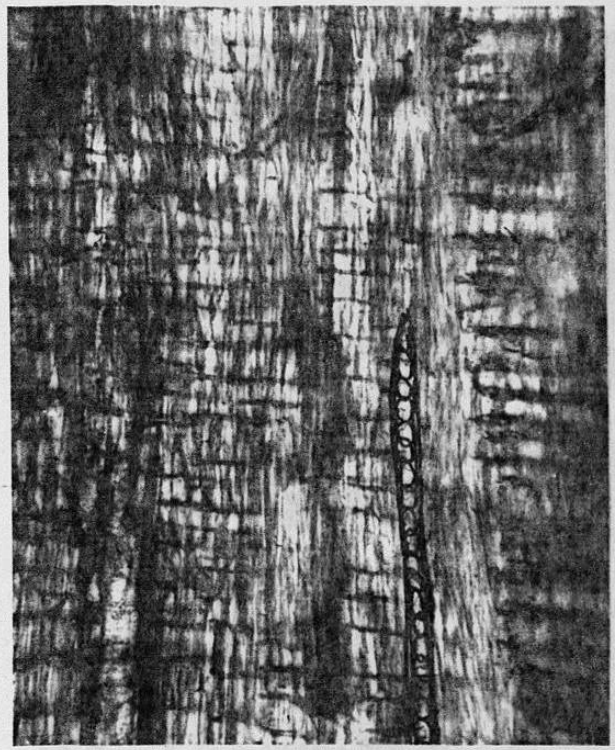
FIG. 14



14a. Senna wislizenii Gray.



14b. Poros difusos y parénquima
paratraqueal vasicéntrico.
(40 X)



14c. Radios homogéneos
uniseriados.
(40 X)

FIG. 15



15a. Ceratonia siliqua L.

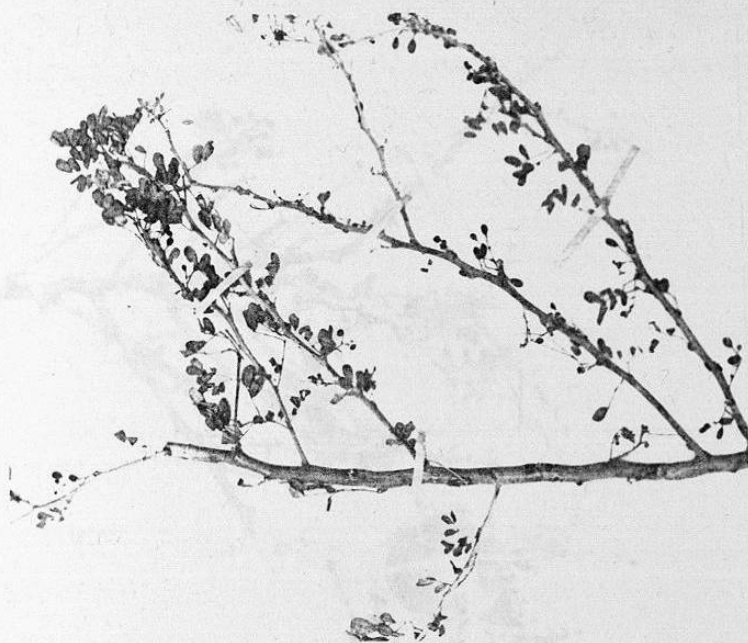


15b. Poros difusos y en pares,
parénquima paratraqueal
vasicéntrico. (40 X)

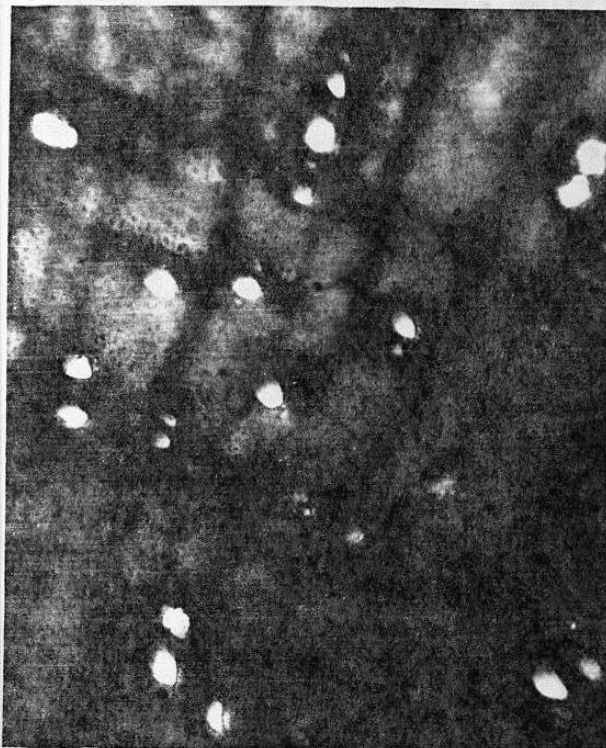


15c. Radios heterogéneos
uniseriados.
(40 X)

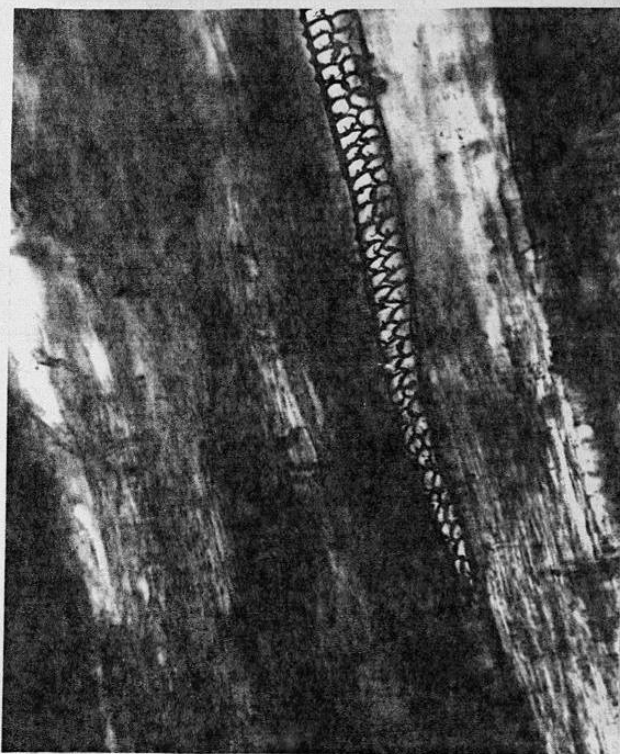
FIG. 16



16a. Cercidium macrum Johnston



16b. Poros difusos y en pares,
parénquima paratraqueal
vasicéntrico. (40 X)



16c. Radios homogéneos
biseriados.
(40 X)

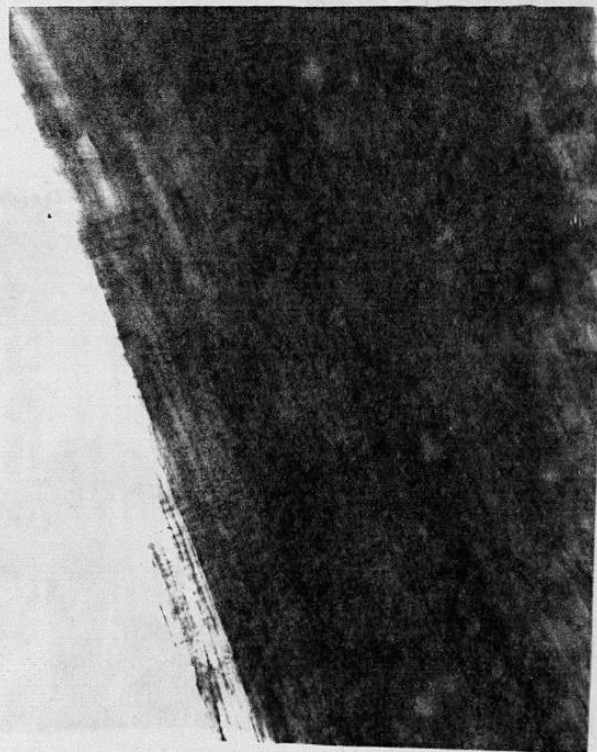
FIG. 17



17a. Cercidium texanum Gray.



17b. Poros escasos y difusos,
parénquima paratraqueal
vasicéntrico. (40X)

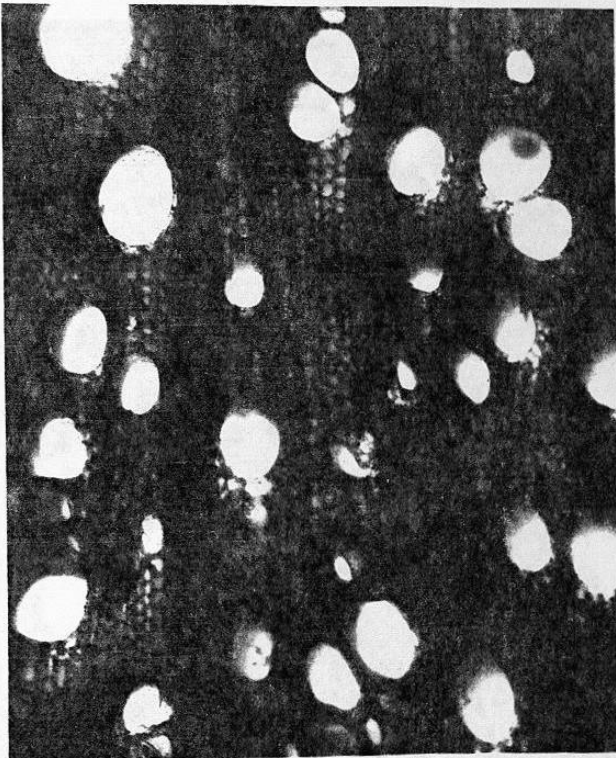


17c. Radios heterogéneos
biseriados.
(40 X)

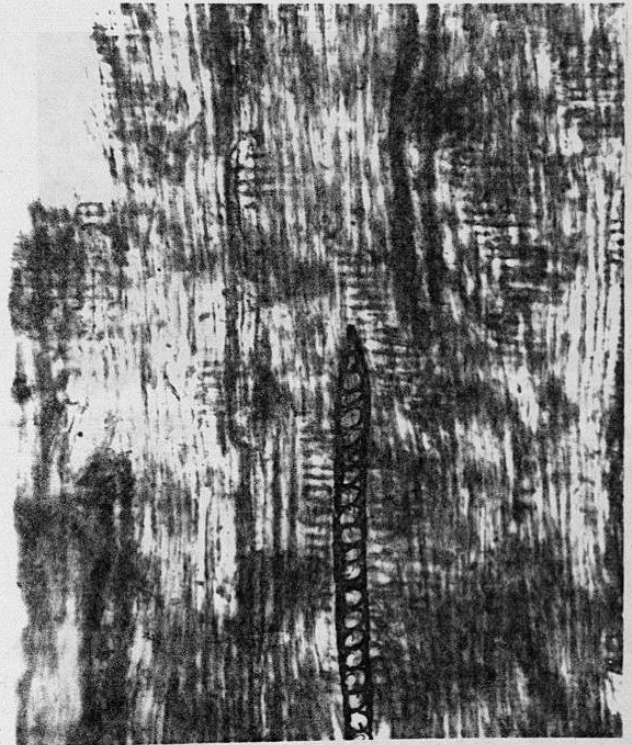
FIG. 18



18a. Dalea frutescens Gray.

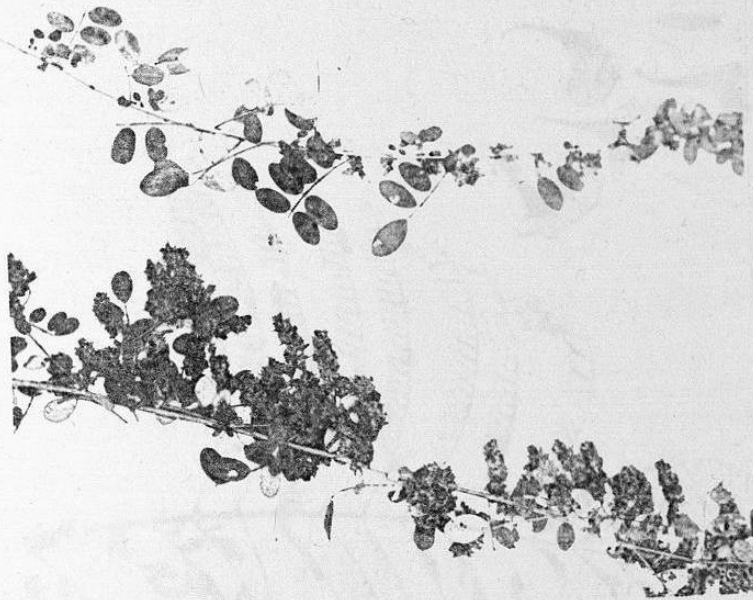


18b. Poros difusos y en pares,
parénquima paratraqueal
vasicéntrico. (40 X)

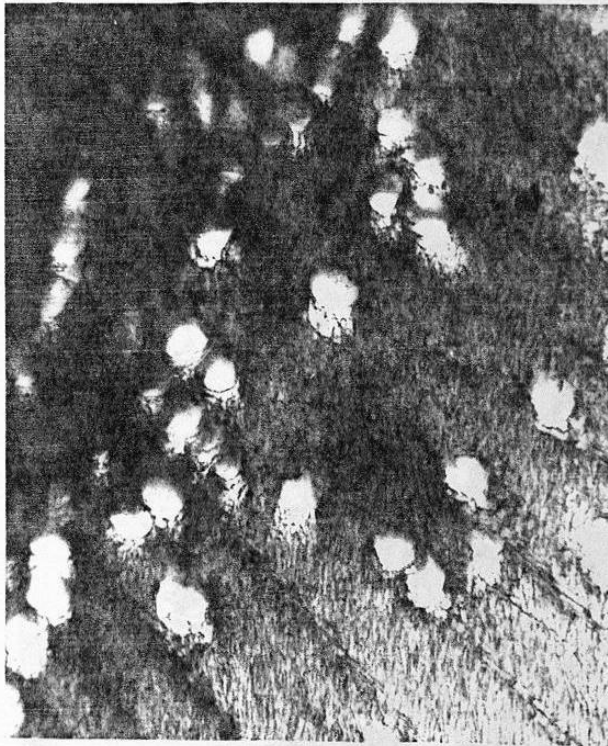


18c. Radios homogéneos
uniseriados.
(40 X)

FIG. 19



19a. Dalea thyrsoiflora Gray.

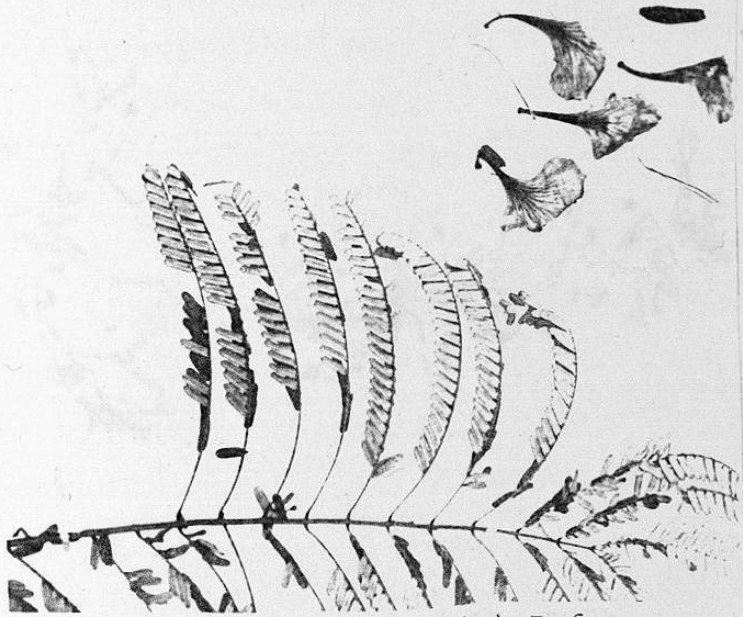


19b. Poros difusos y en pares,
parénquima paratraqueal vasi-
céntricos. (40 X)

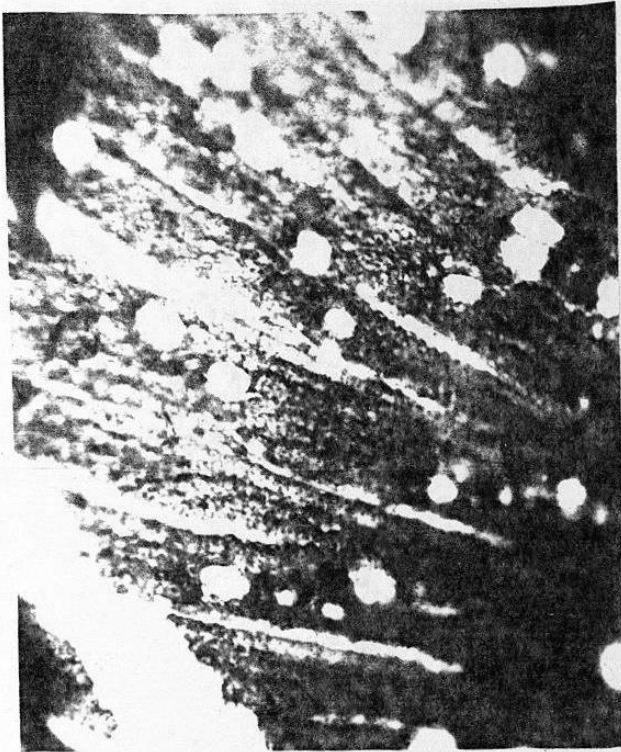


19c. Radios heterogéneos
biseriados.
(40 X)

FIG. 20



20a. *Delonix regia* (BOJ.) Raf.



20b. Poros difusos y parénquima paratraqueal vasicéntrico.
(40 X)



20c. Radios homogéneos uniseriados.
(40 X)

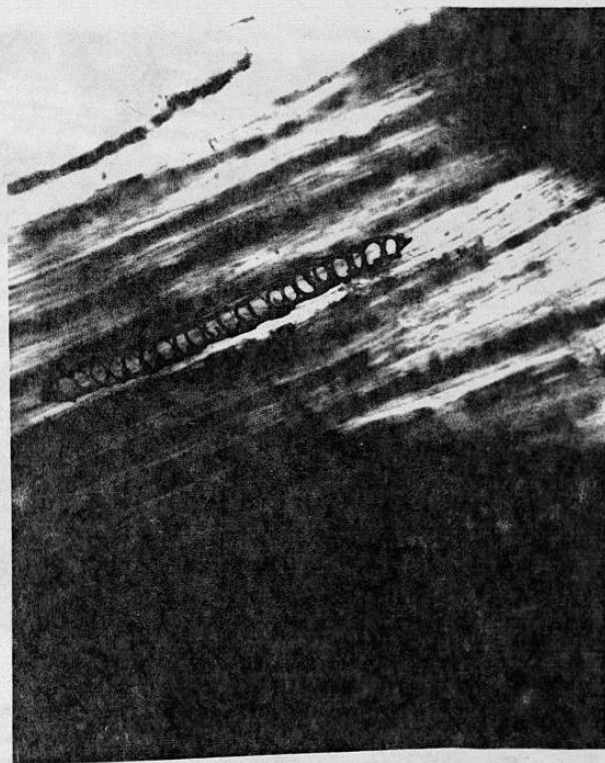
FIG. 21



21a. Diphysa microphylla Rydb.

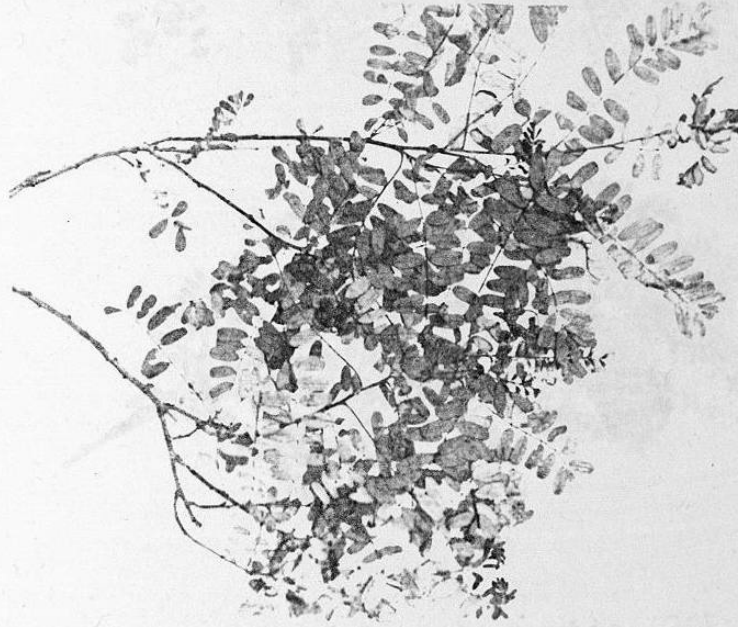


21b. Poros difusos y parênquima
paratraqueal aliforme.
(40 X)

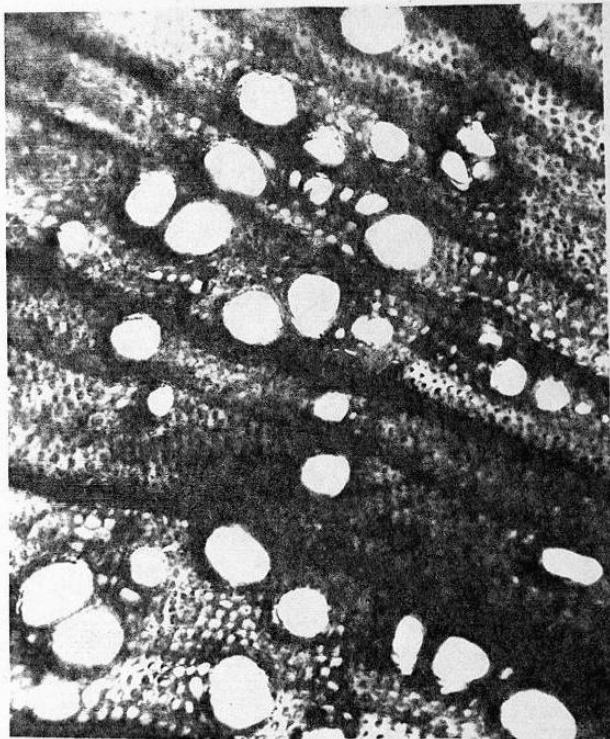


21c. Radios homogéneos
uniseriados.
(40 X)

FIG. 22



22a. Eysenhardtia texana Scheele.



22b. Poros difusos y agrupados
parénquima paratraqueal
vasicéntrico. (40 X)

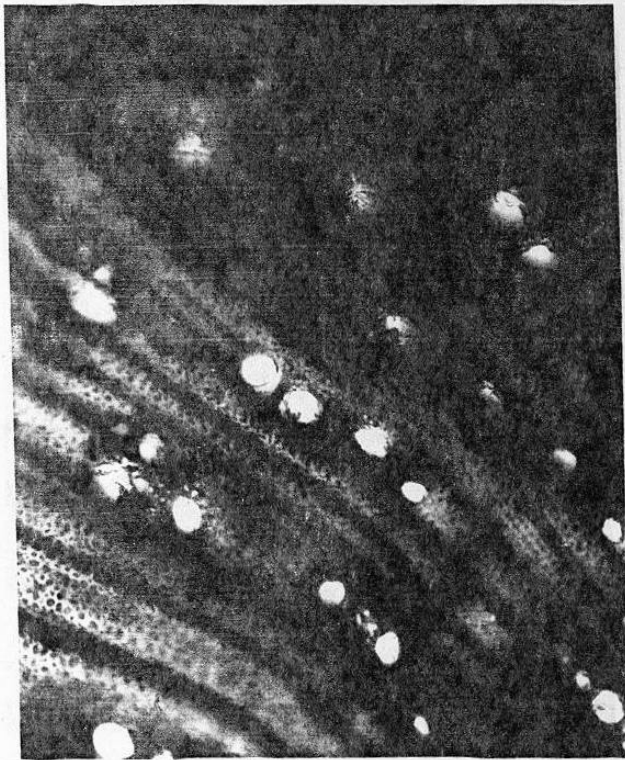


22c. Radios heterogéneos
biseriados.
(40 X)

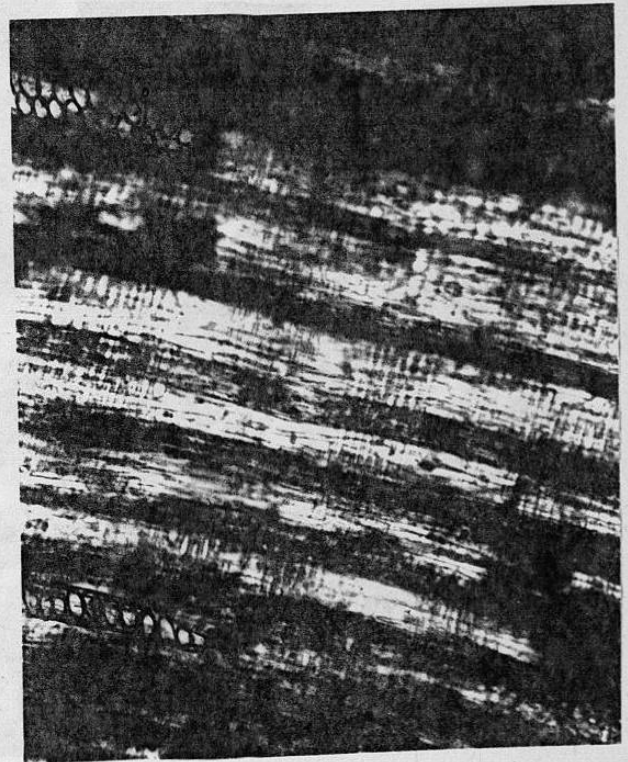
FIG. 23



23a. Eysenhardtia polystachia (Ort.) Sarg.

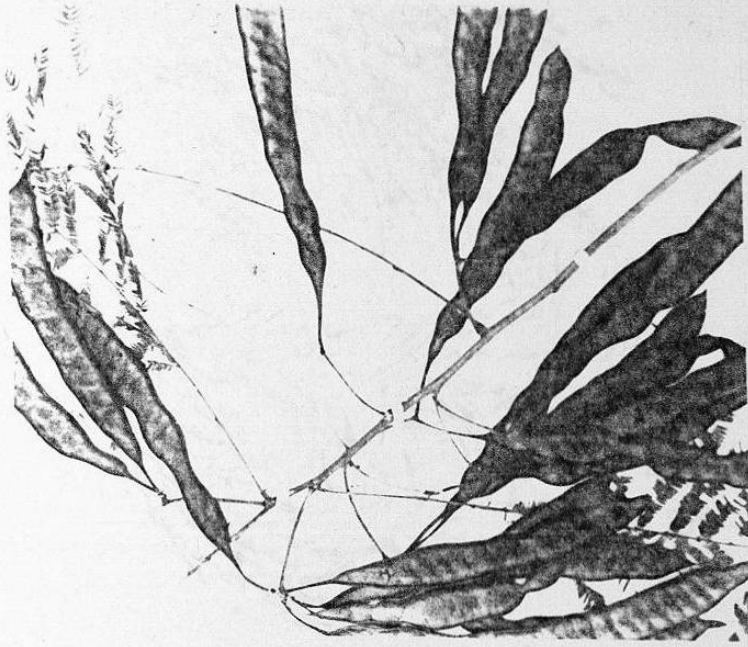


23b. Poros lineales y parénquima
paratraqueal vasicéntrico.
(40 X)

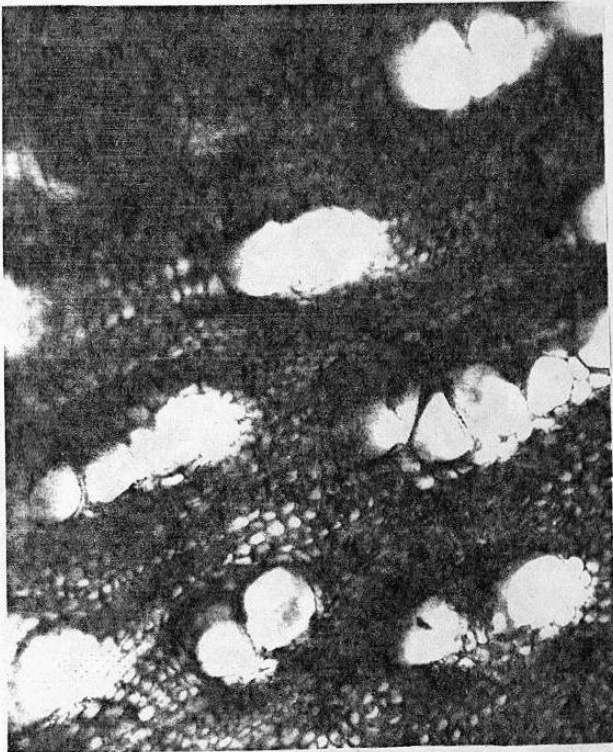


23c. Radios homogéneos
uni y biseriados.
(40 X)

FIG. 24



24a. Leucaena leucocephala (Lam.) de Wit.



24b. Poros difusos y en pares,
parénquima paratraqueal
vasicéntrico. (40 X)



24c. Radios heterogéneos
uniseriados.
(40 X)