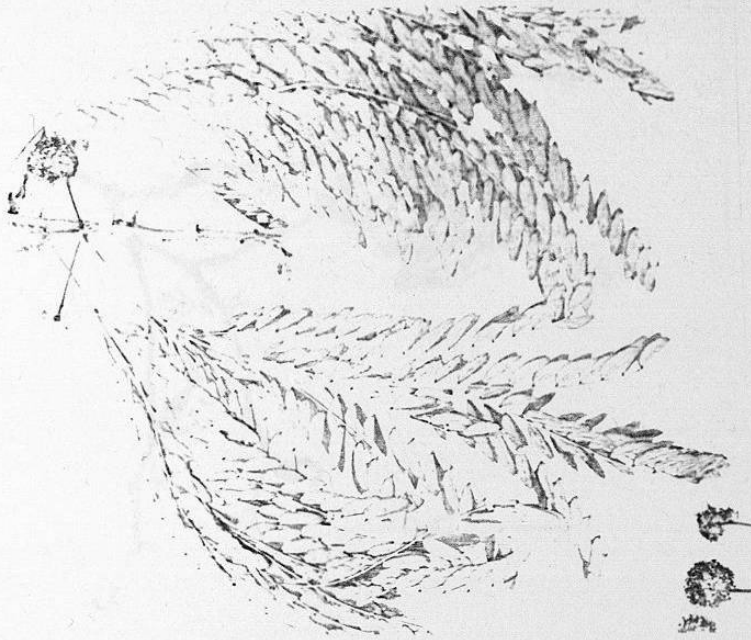
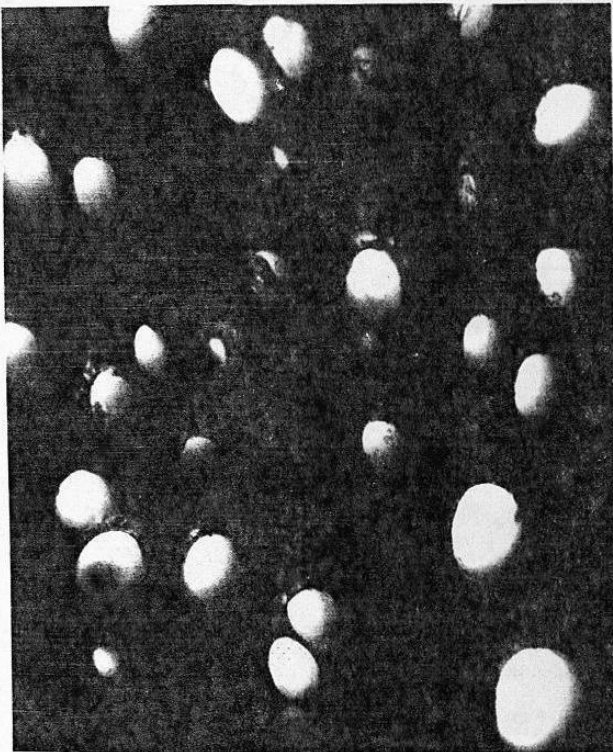


FIG. 25



25a. Leucaena pulverulenta Benth.



25b. Poros en línea y parénquima
paratraqueal vasicéntrico.
(40 X)

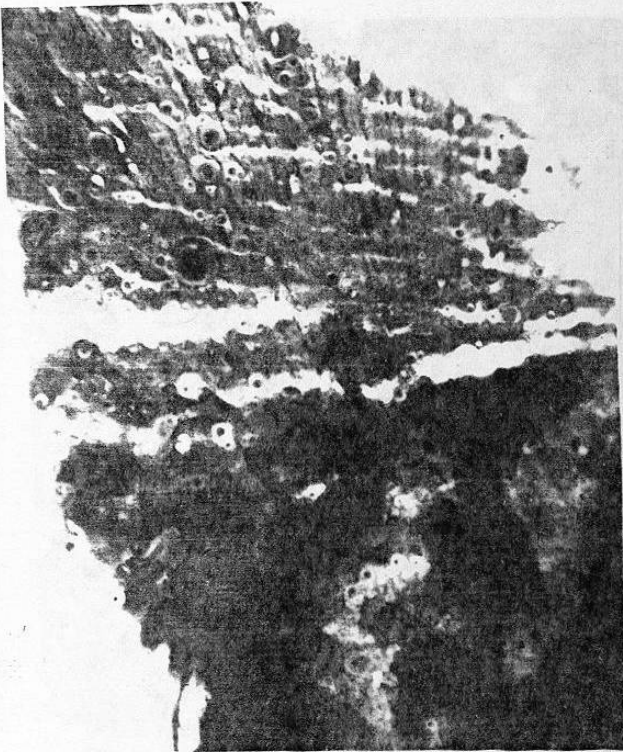


25c. Radios heterogéneos
uniseriados.
(40 X)

FIG. 26



26a. Mimosa biuncifera Benth.



26b, Poros difusos, parénquima
paratraqueal vasicéntrico.
(40X)

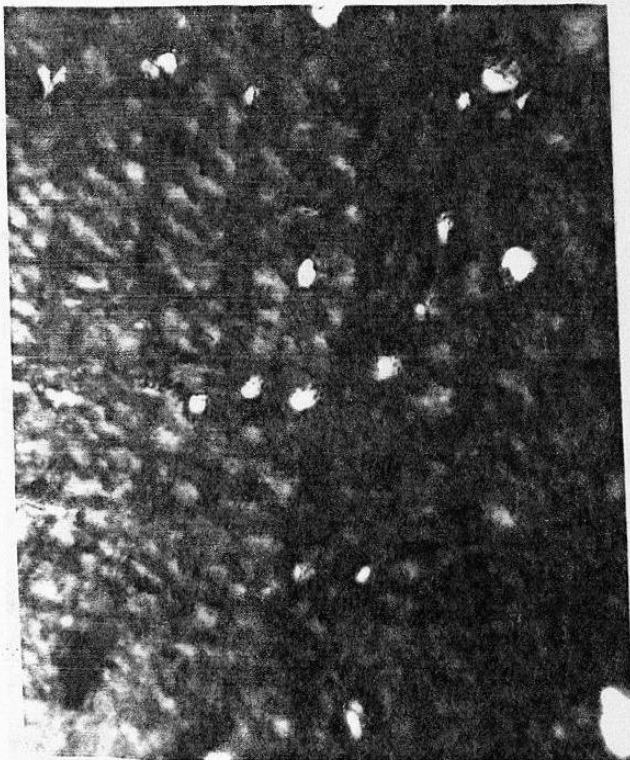


26c, Radios homogéneos
uniseriados.
(40 X)

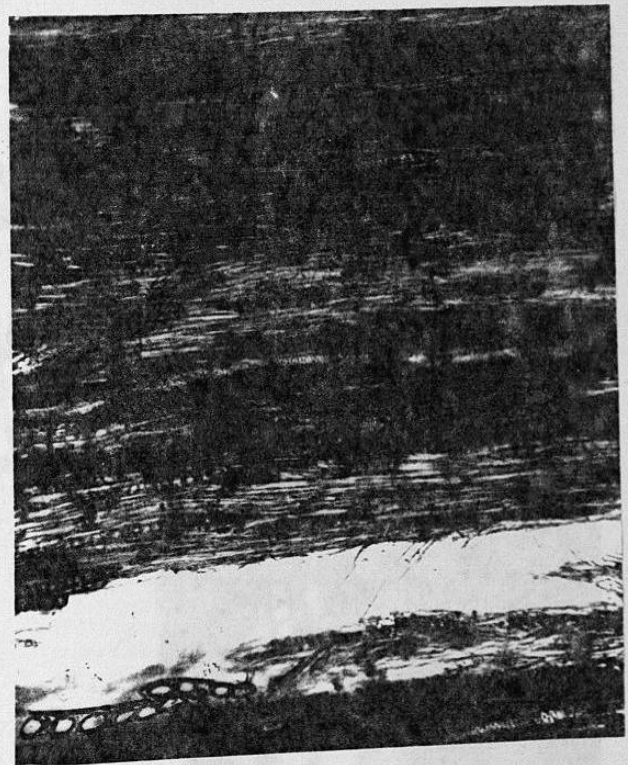
FIG. 27



27a. Mimosa malacophylla Gray.

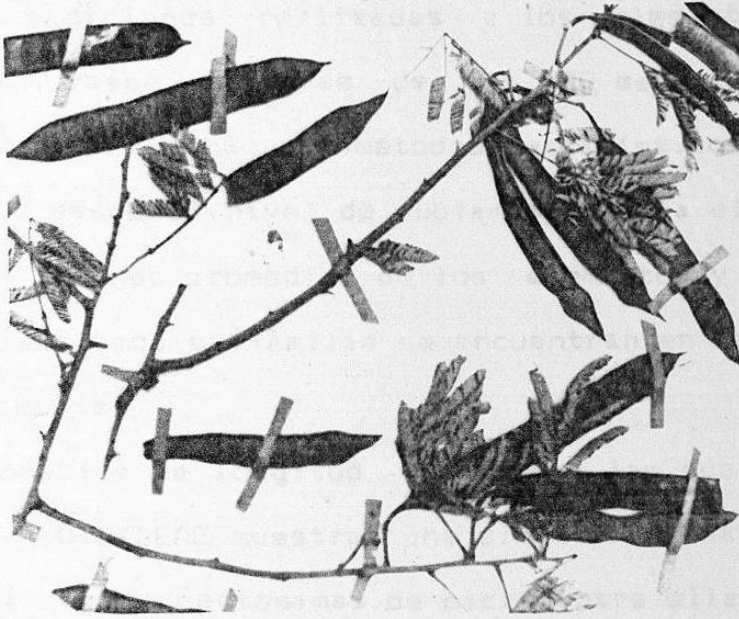


27b. Poros difusos, parénquima
paratraqueal vasicéntrico.
(40 X)

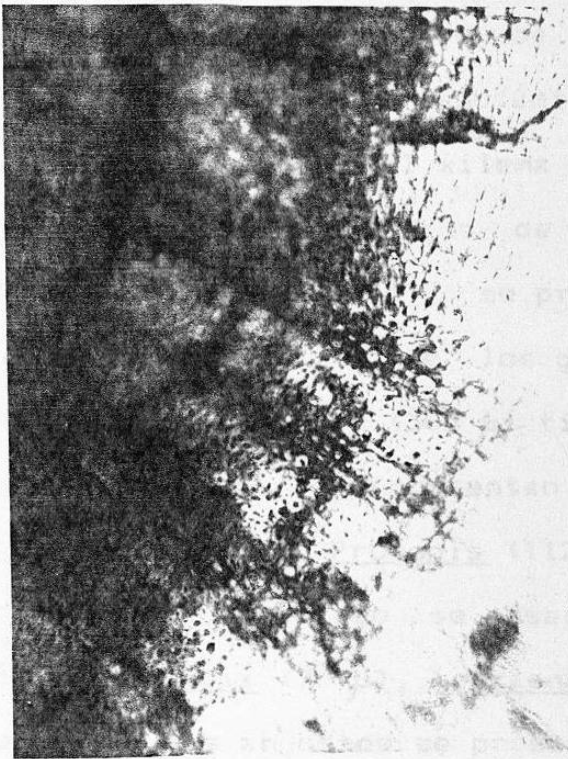


27c. Radios homogéneos
uniseriados.
(40 X)

FIG. 28

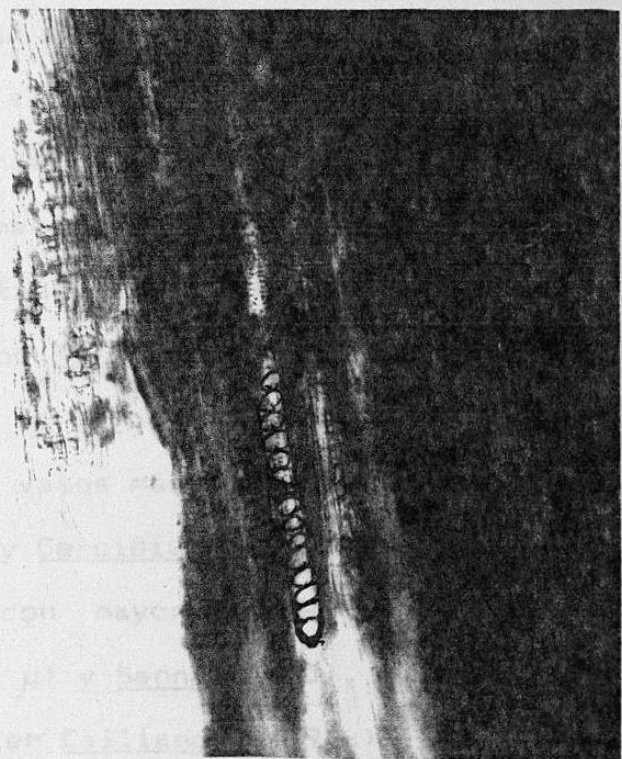


28a. Pithecellobium ebano (Berl.) Muller.



28b. Poros en línea, parénquima paratraqueal aliforme.

(40 X)



28c. Radios heterogéneos uniseriados.

(40 X)