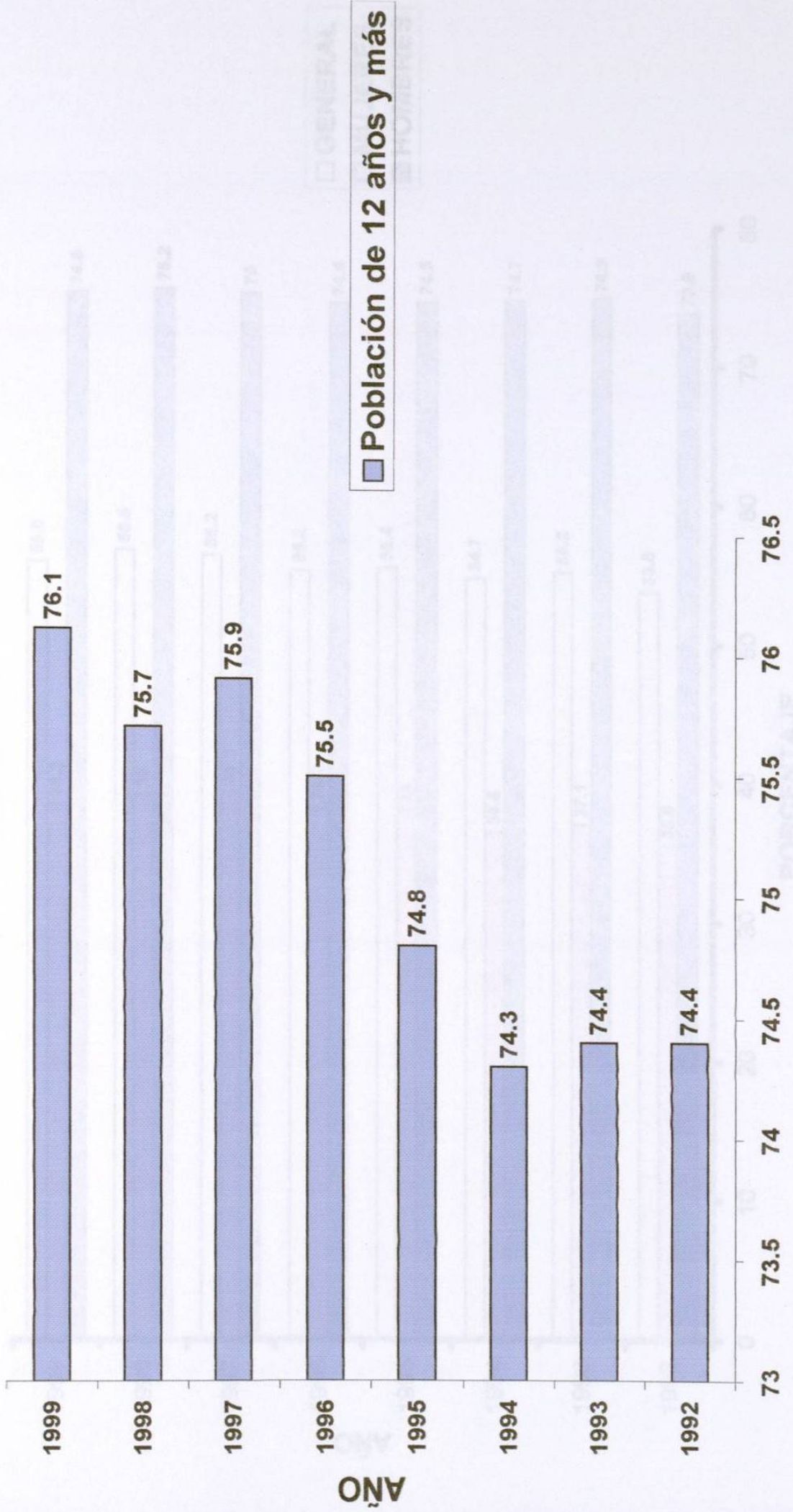
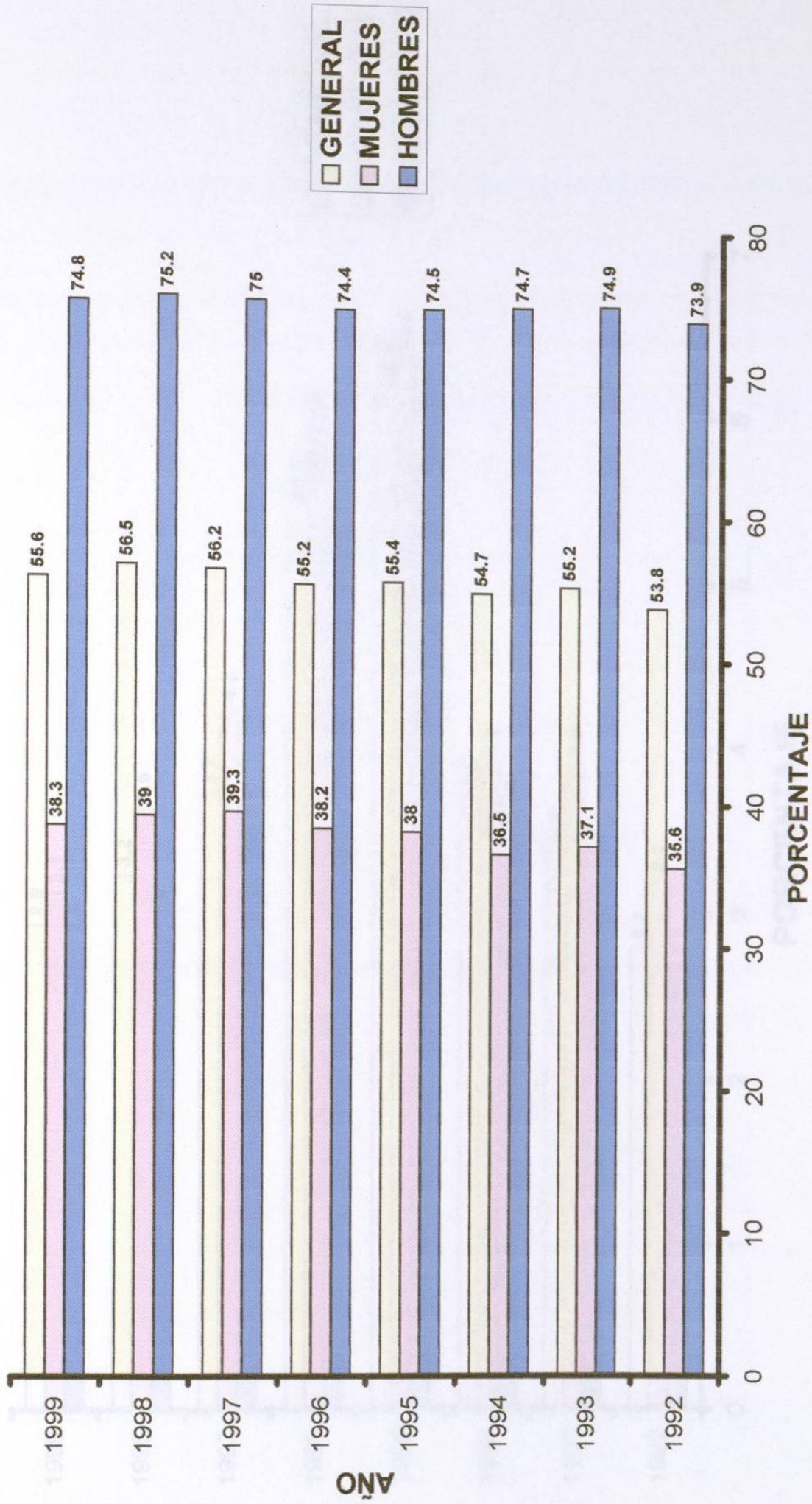


Anexos

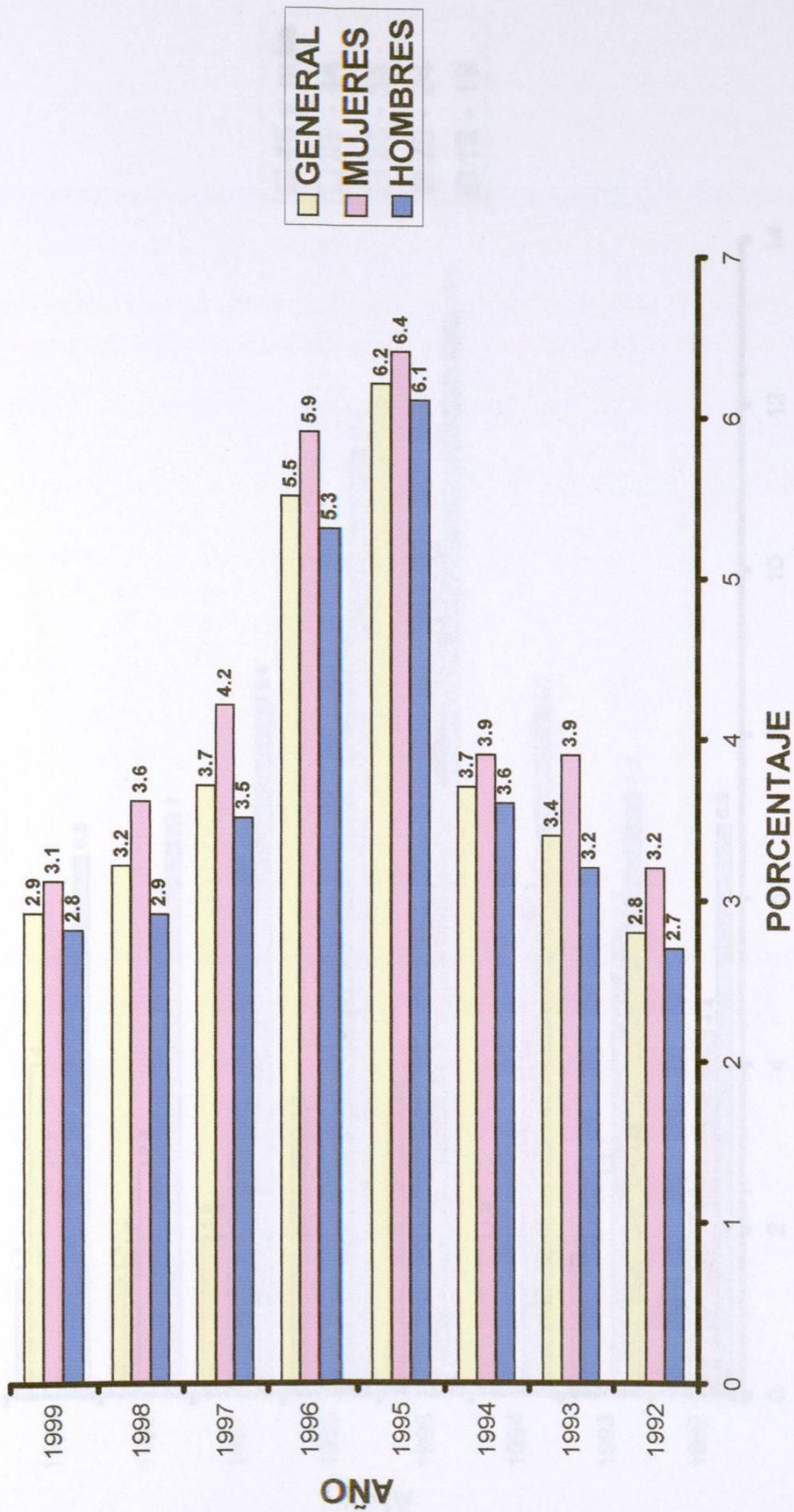
POBLACIÓN DE 12 AÑOS Y MÁS



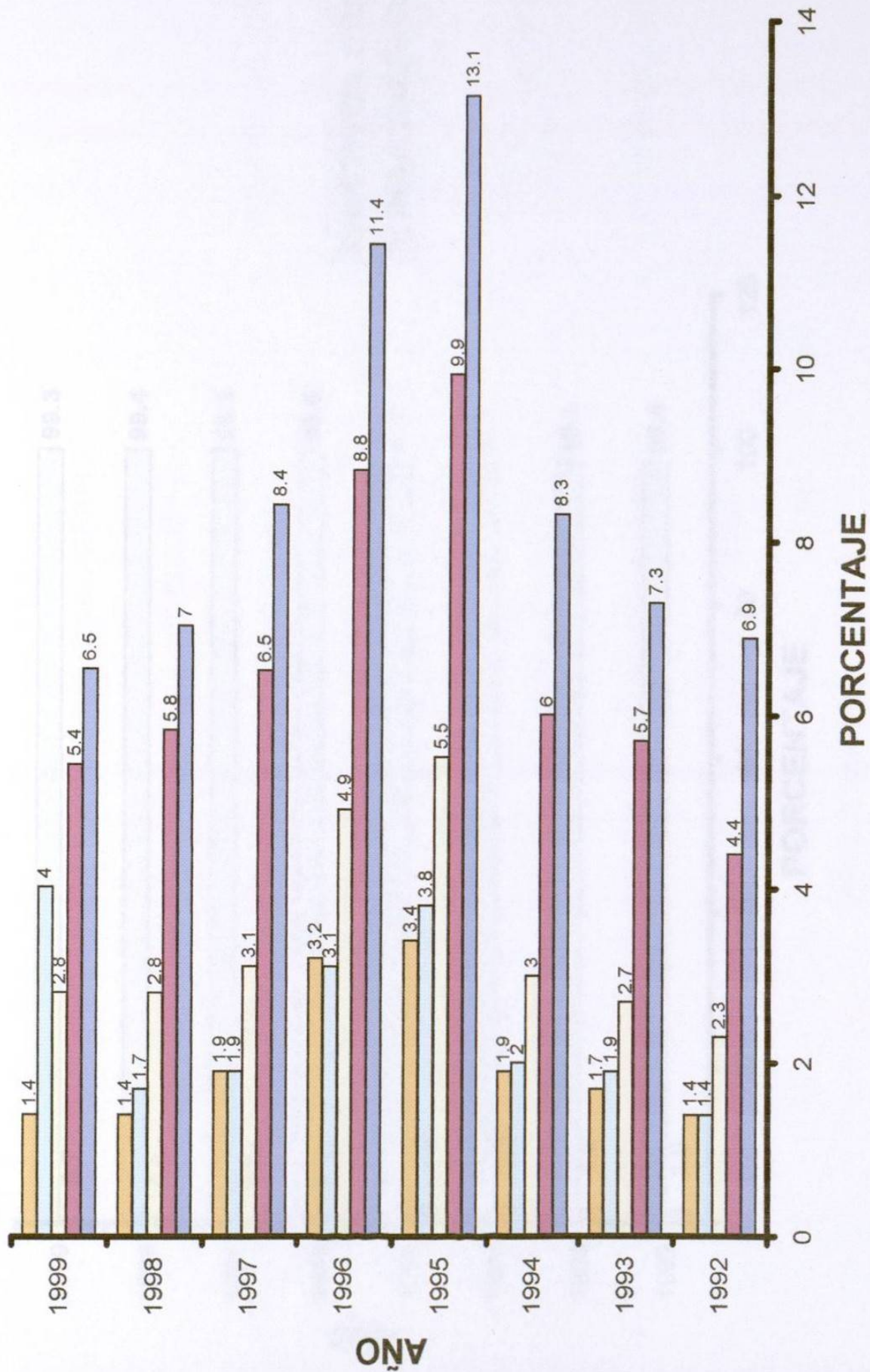
POBLACIÓN ECONÓMICAMENTE ACTIVA



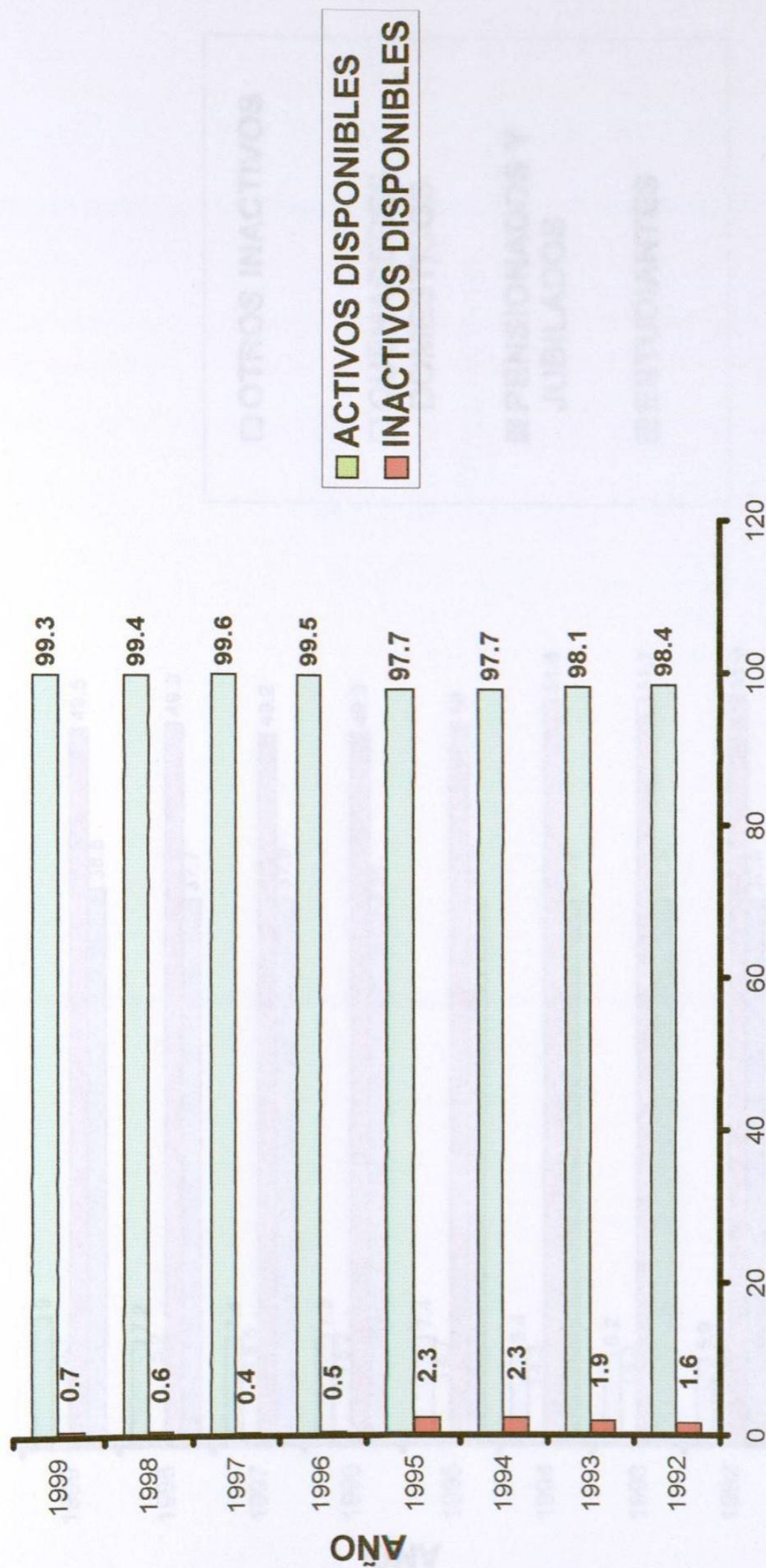
TASA DE DESEMPLEO ABIERTO



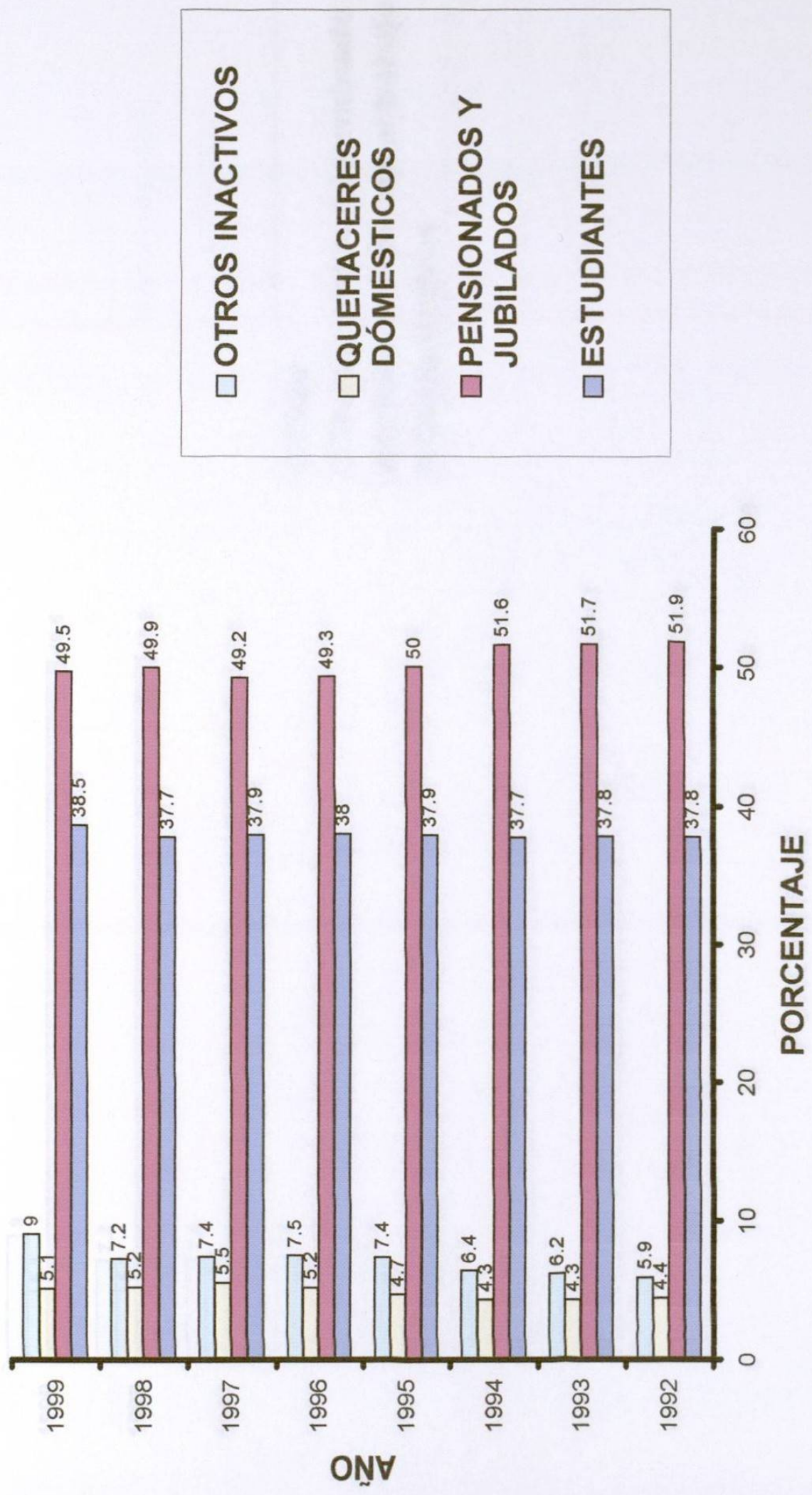
POBLACION GRUPOS DE EDAD INACTIVA



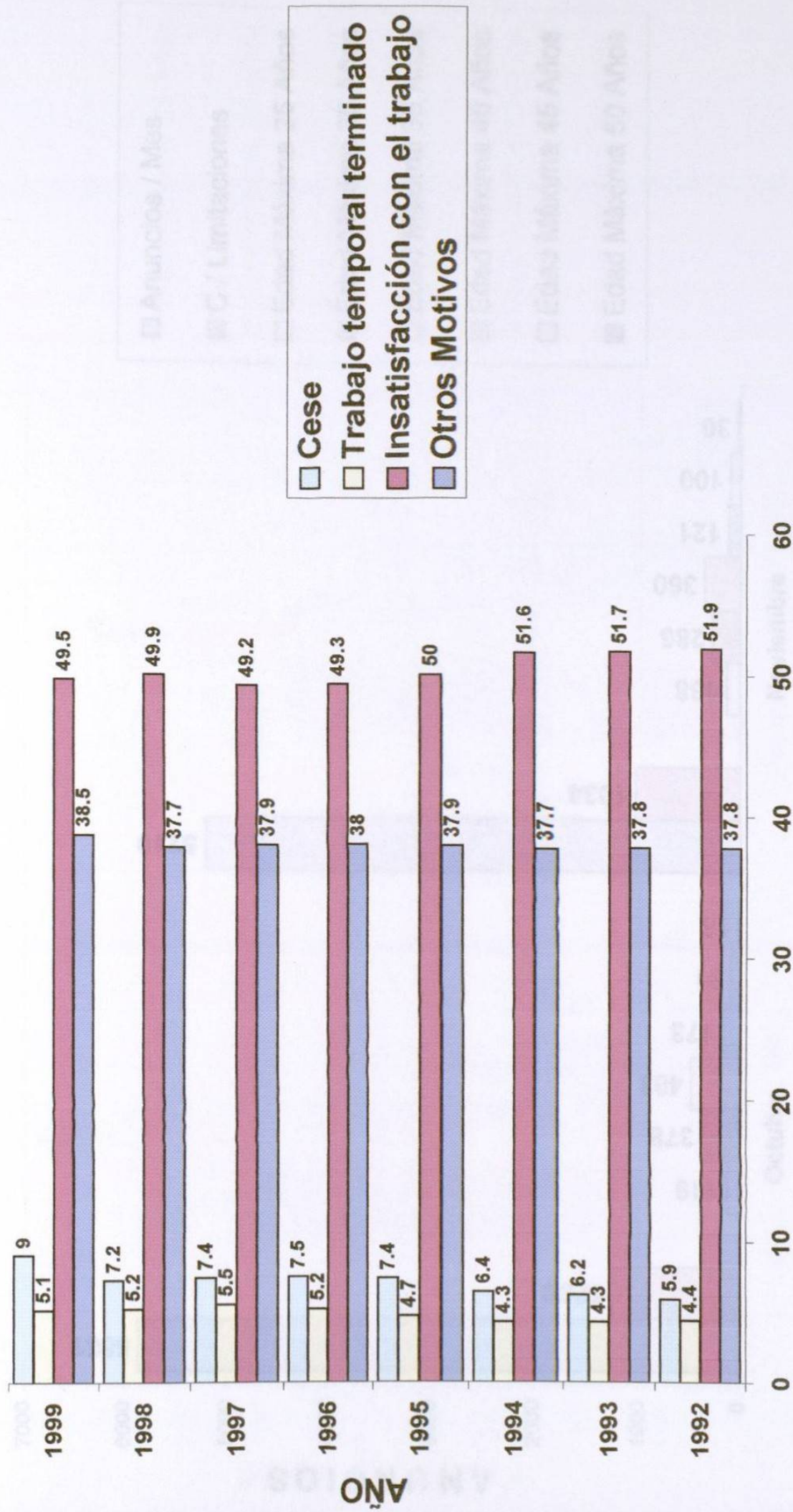
POBLACIÓN ECONÓMICAMENTE INACTIVA



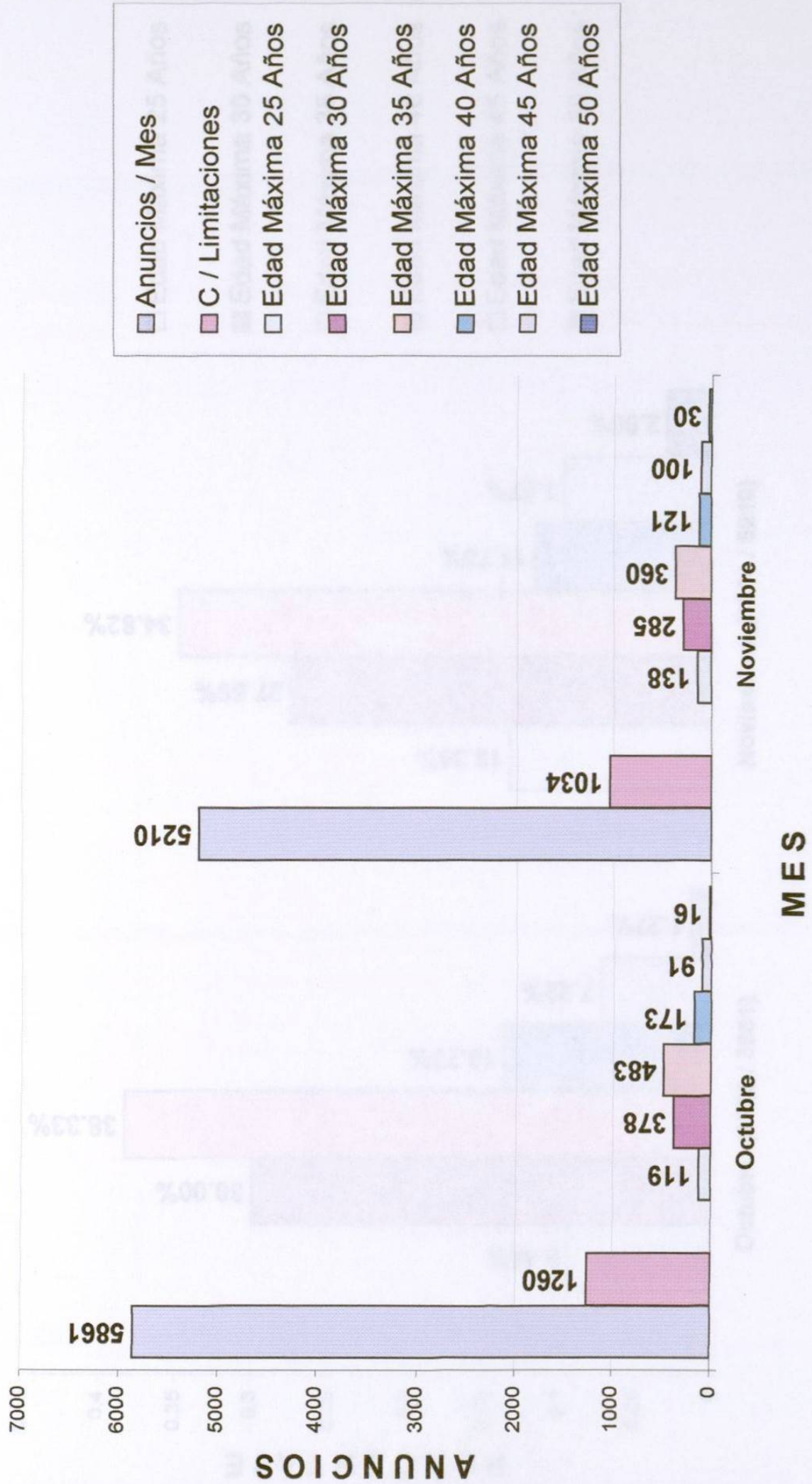
CONDICIÓN DE INACTIVIDAD



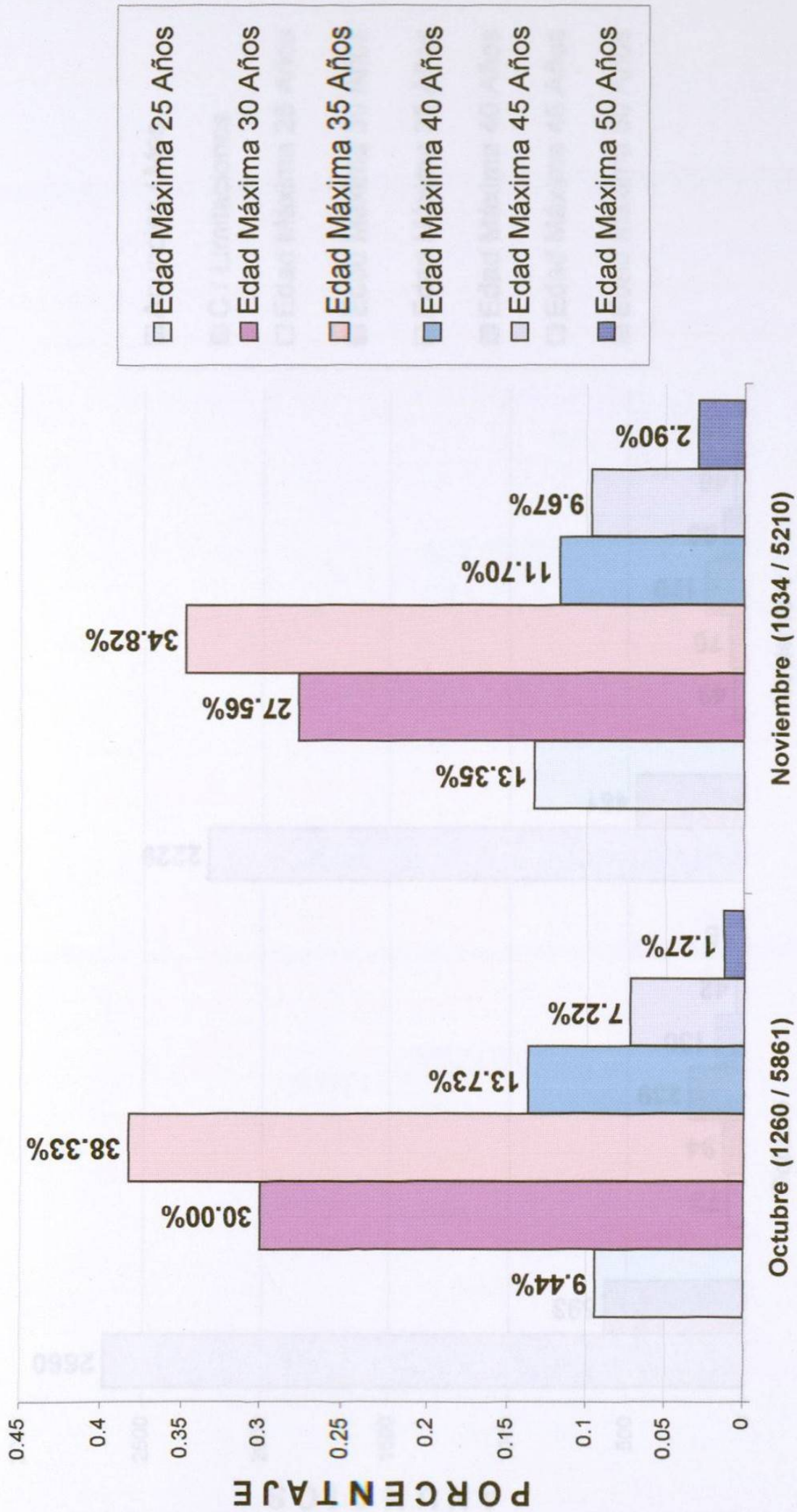
MOTIVOS PARA DEJAR EL TRABAJO



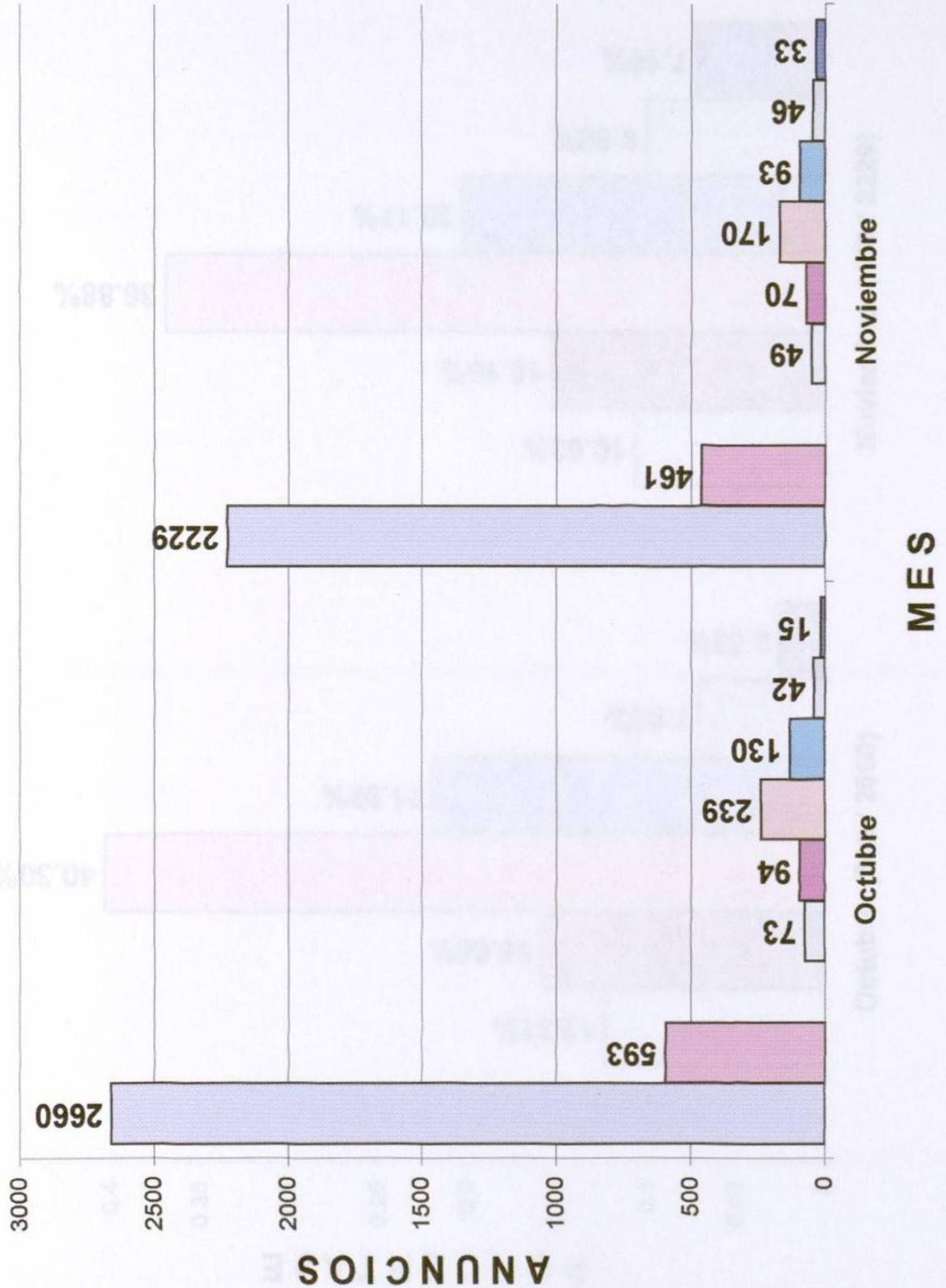
PROFESIONISTAS



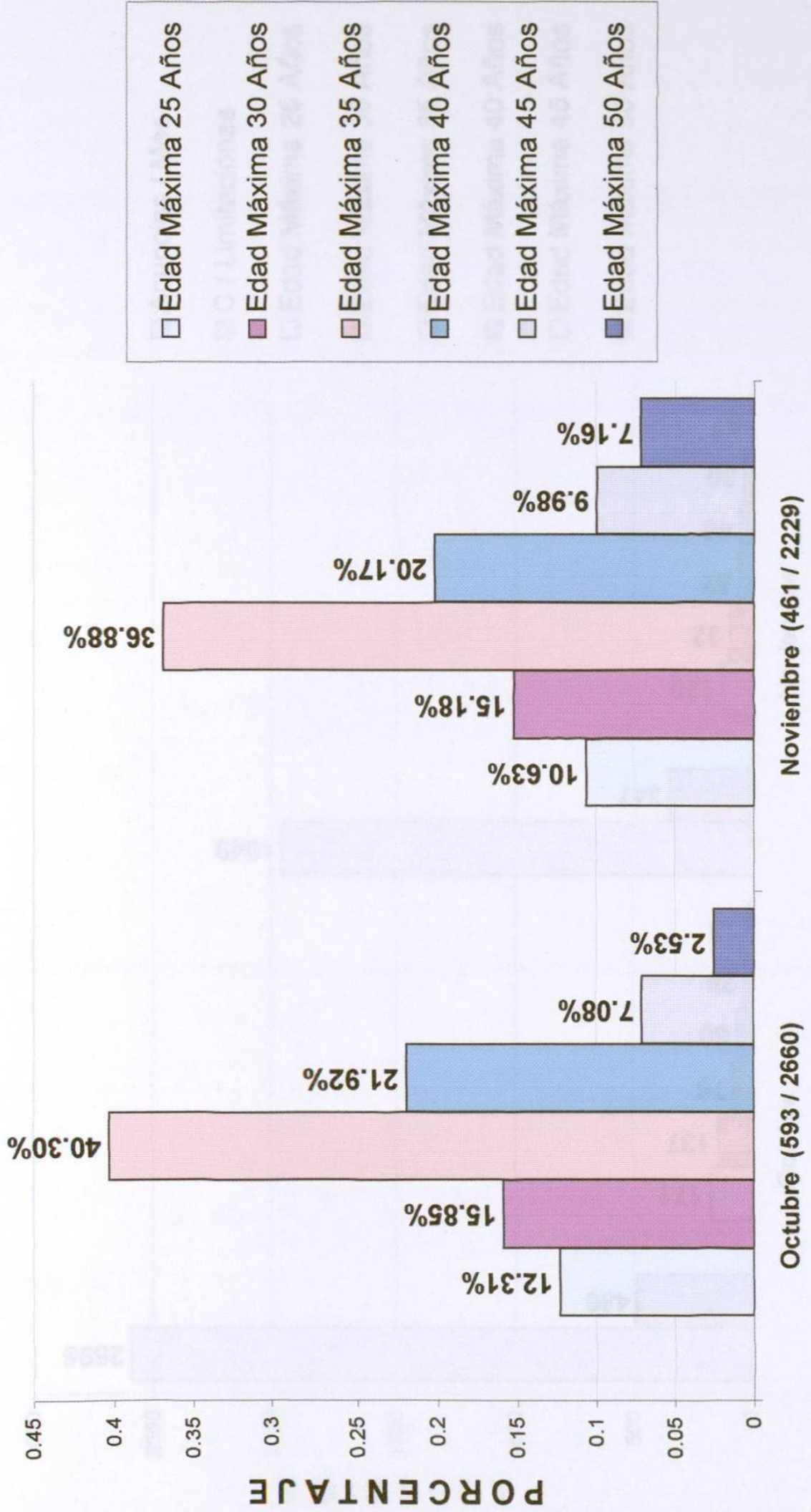
AGGREGADOS PROFESIONISTAS



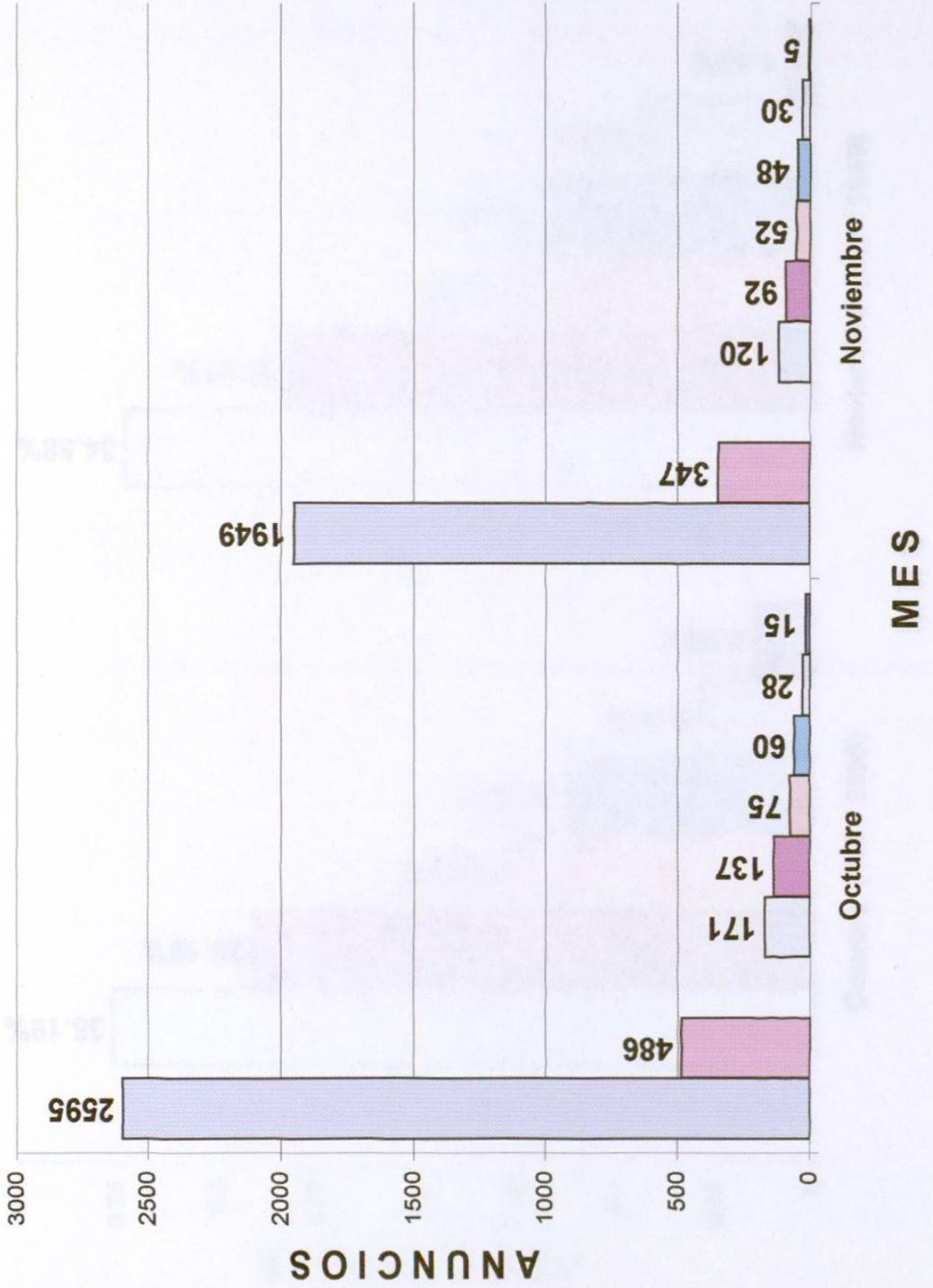
AGENTES DE VENTAS



AGENTES DE VENTAS

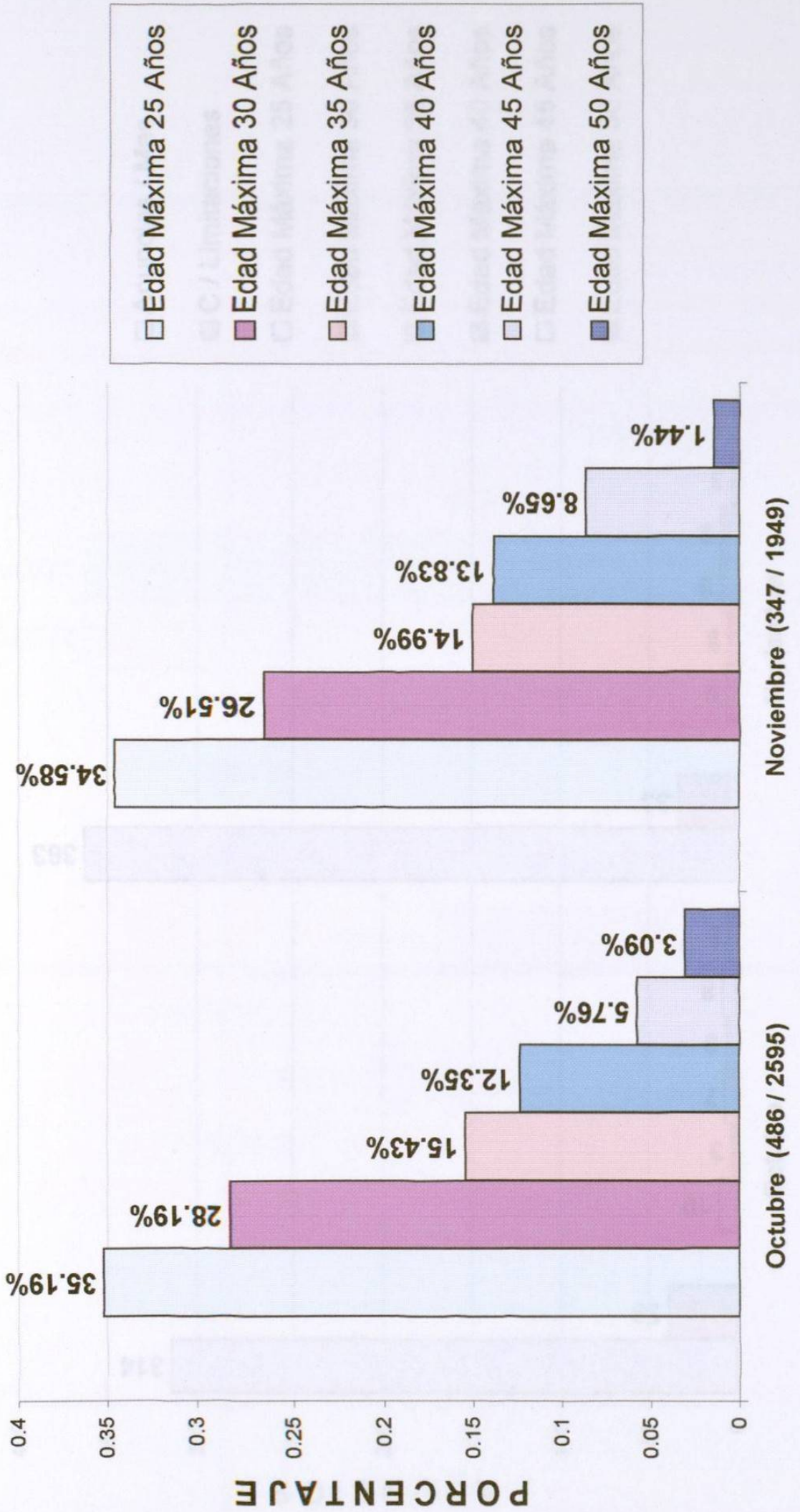


VENTAS DE MOSTRADOR

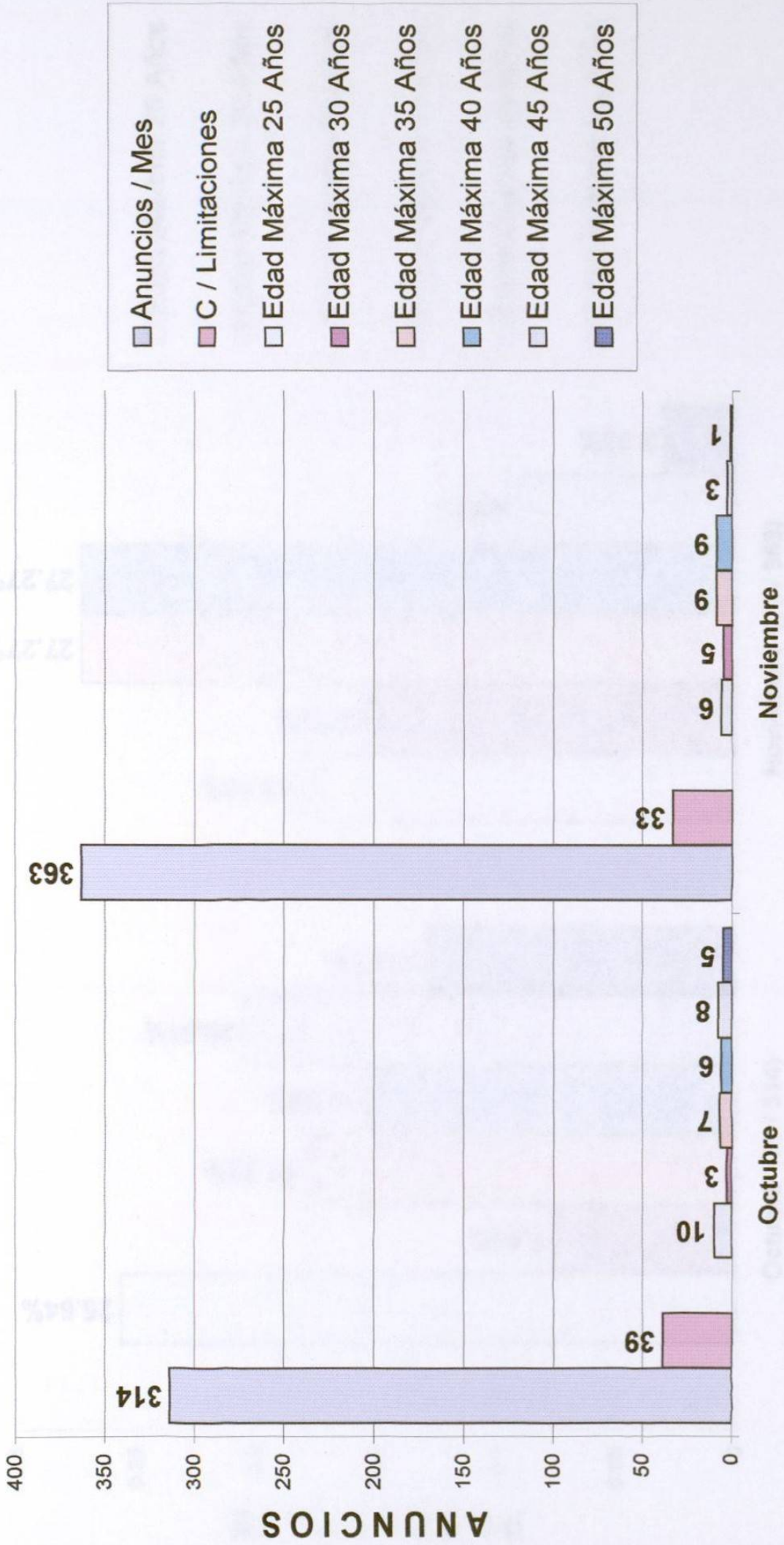


- Anuncios / Mes
- C / Limitaciones
- Edad Máxima 25 Años
- Edad Máxima 30 Años
- Edad Máxima 35 Años
- Edad Máxima 40 Años
- Edad Máxima 45 Años
- Edad Máxima 50 Años

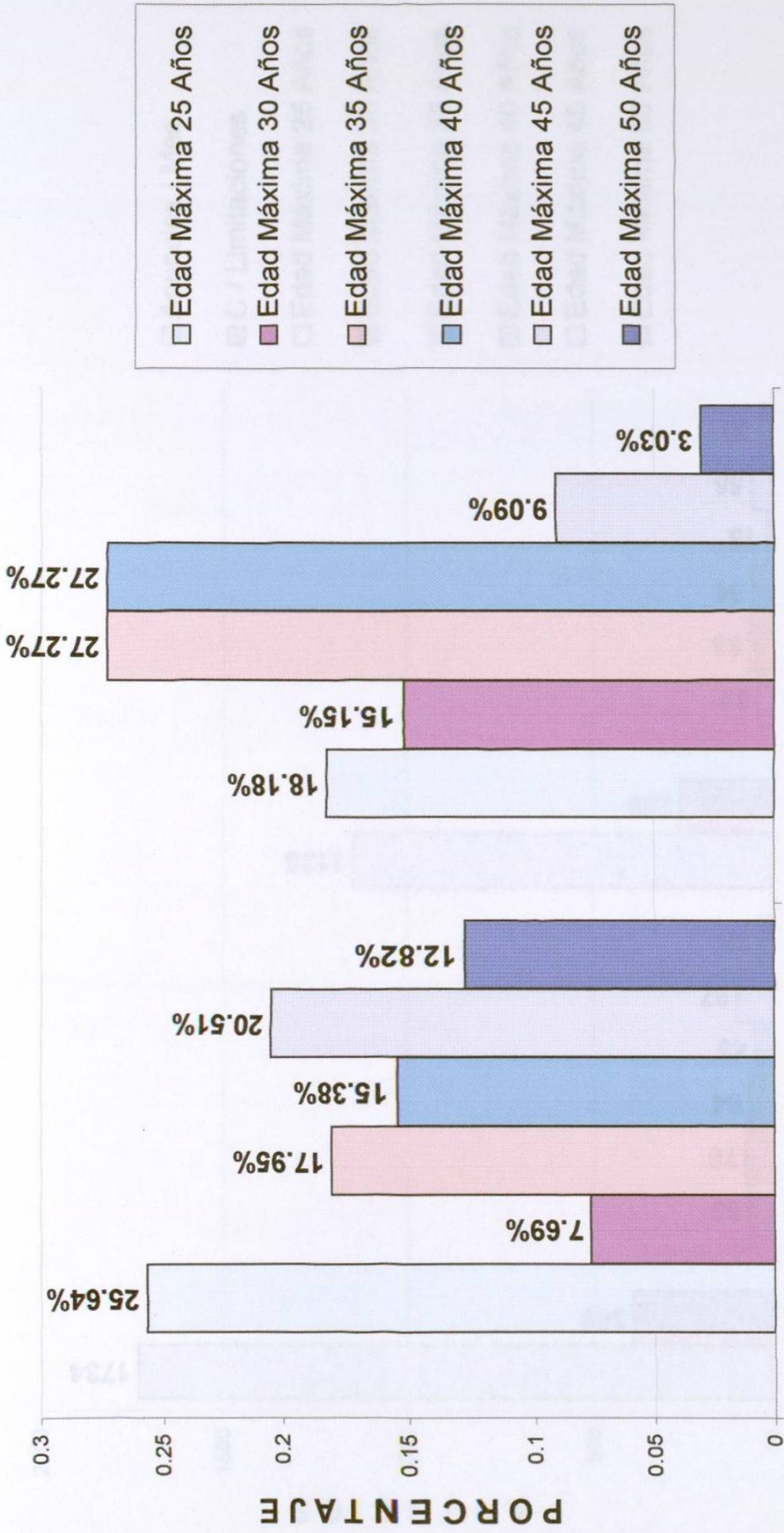
VENTAS DE MOSTRADOR



CASA POR CASA

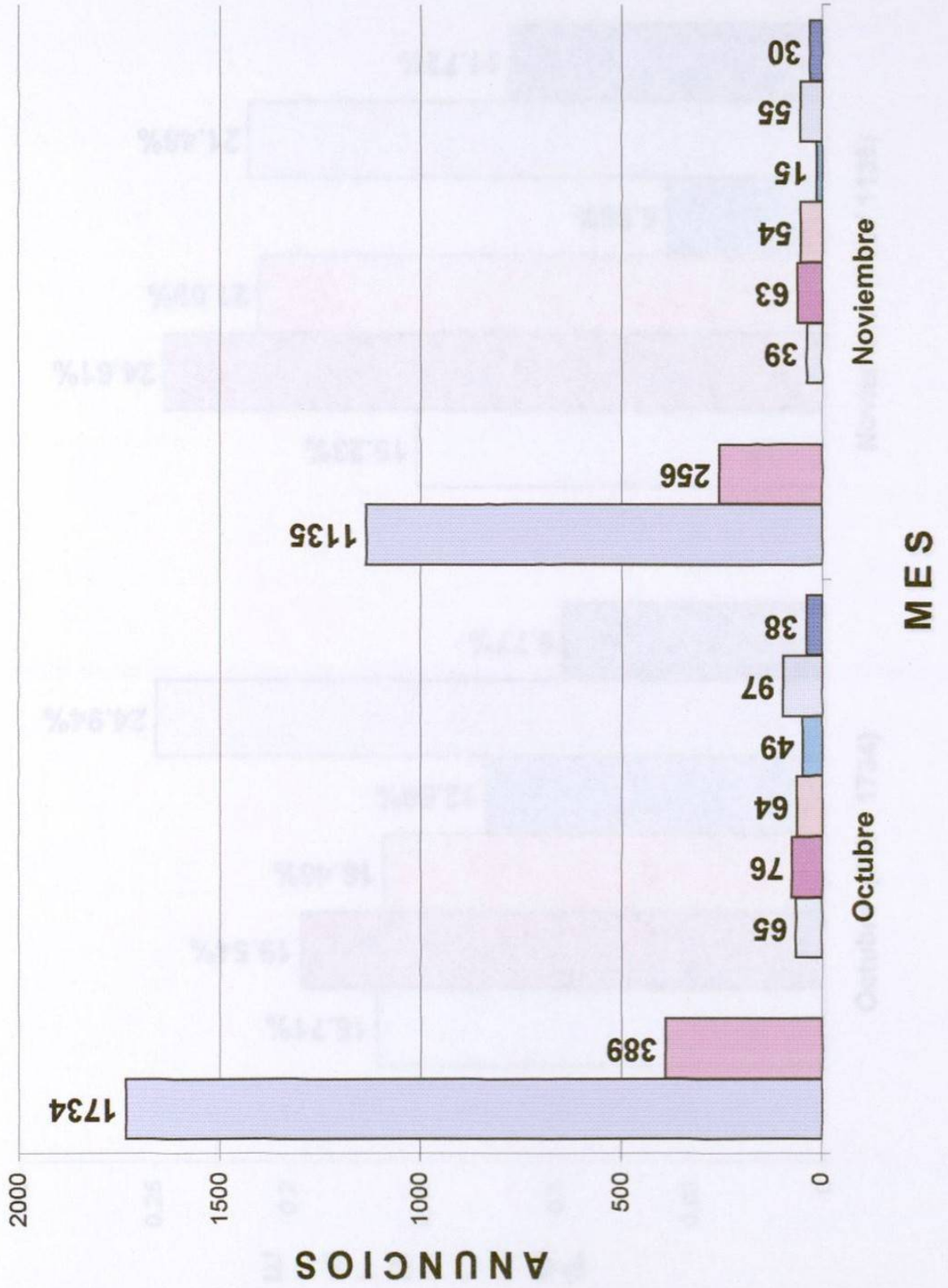


EMPRESA CASA POR CASA

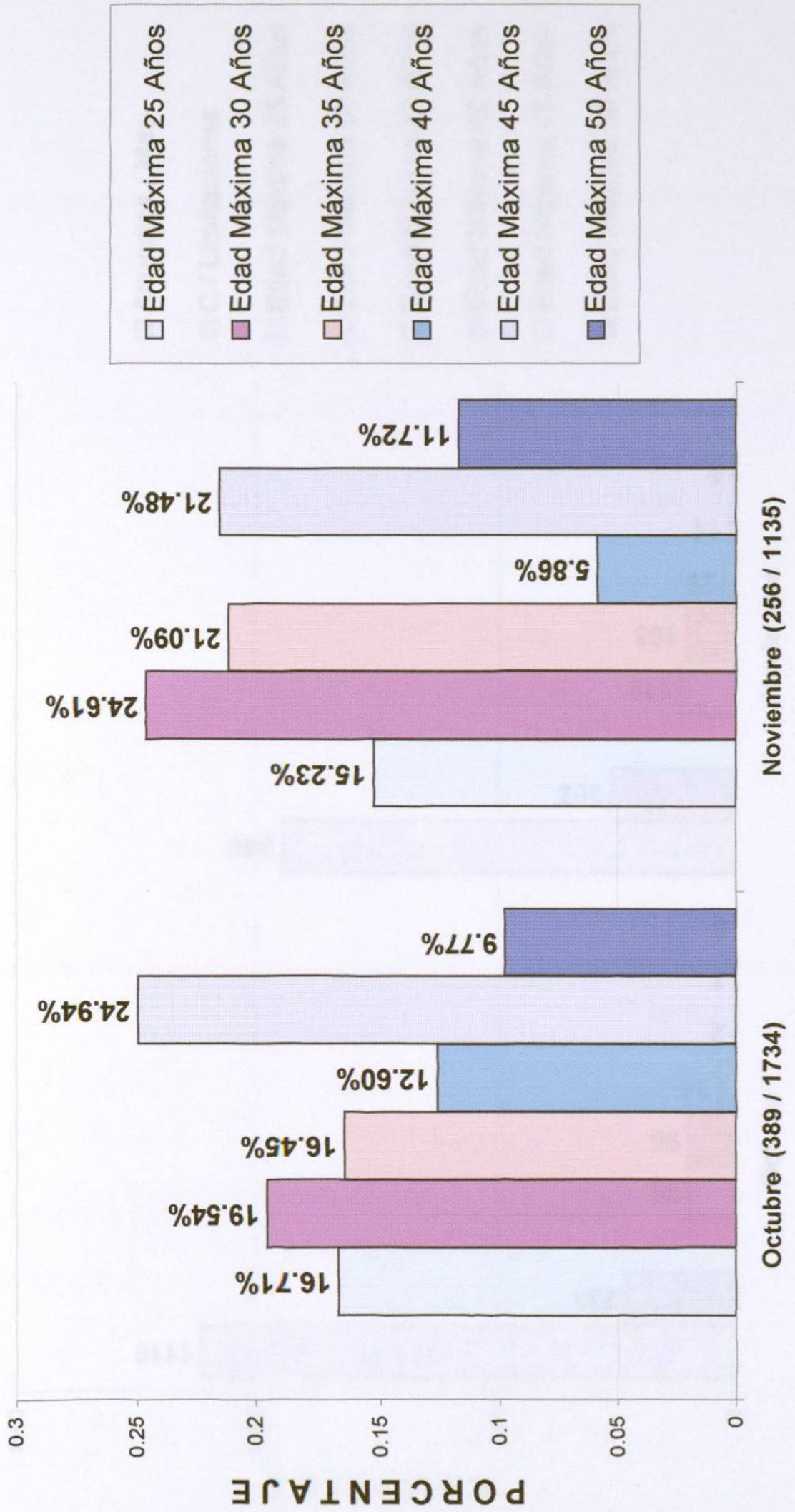


MES

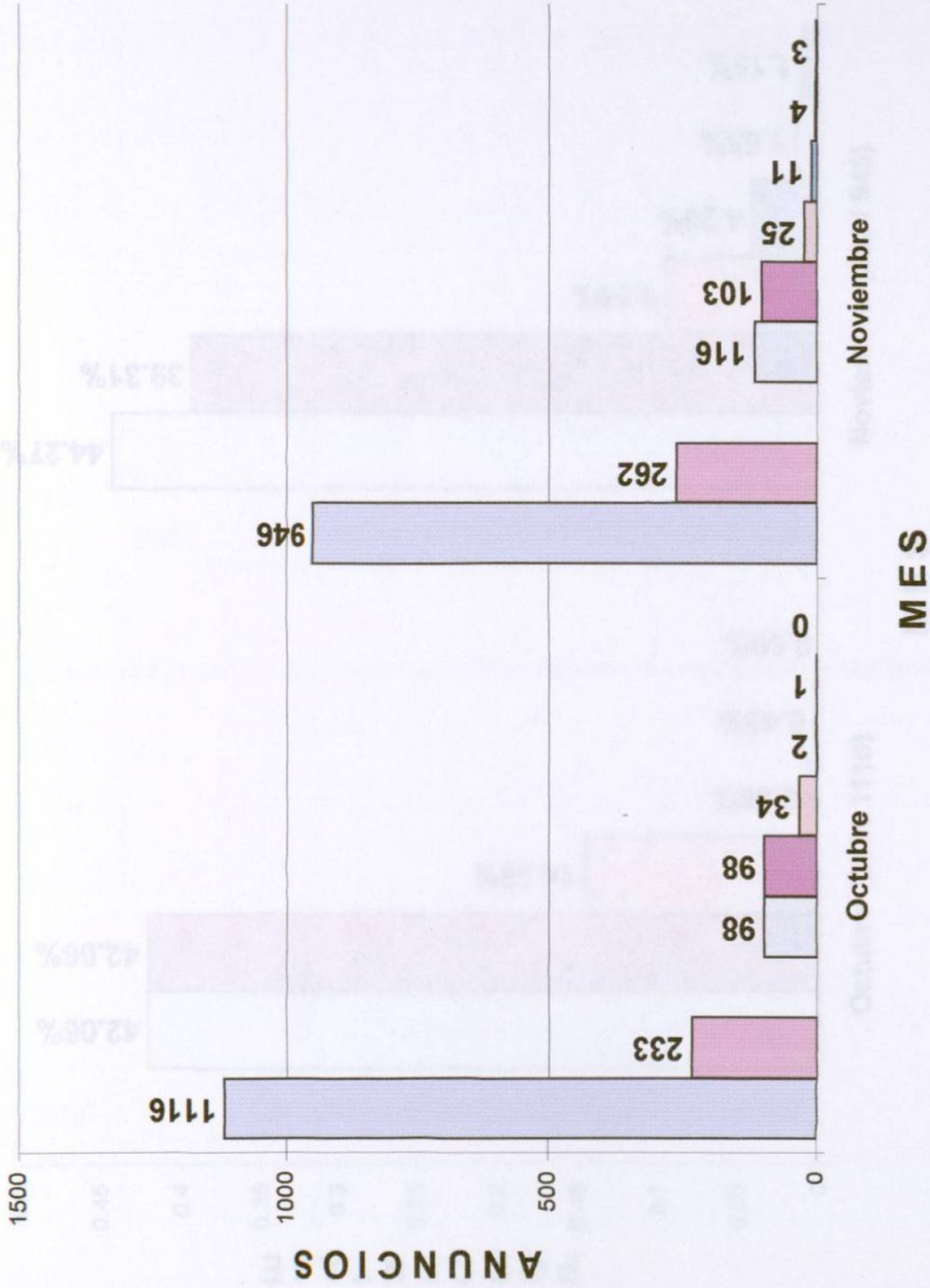
EMPLEADOS DE OFICINA



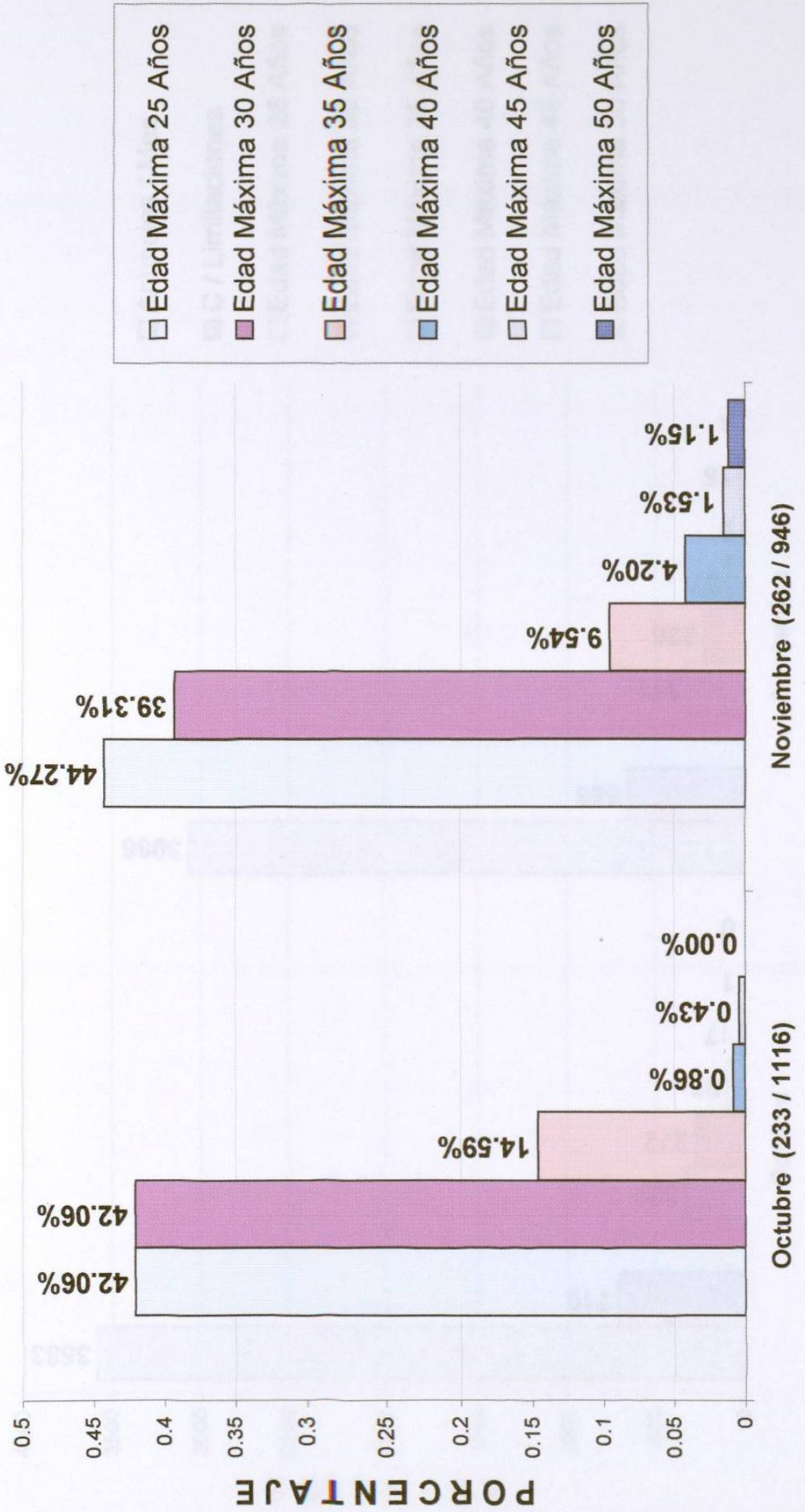
EMPLEADOS DE OFICINA



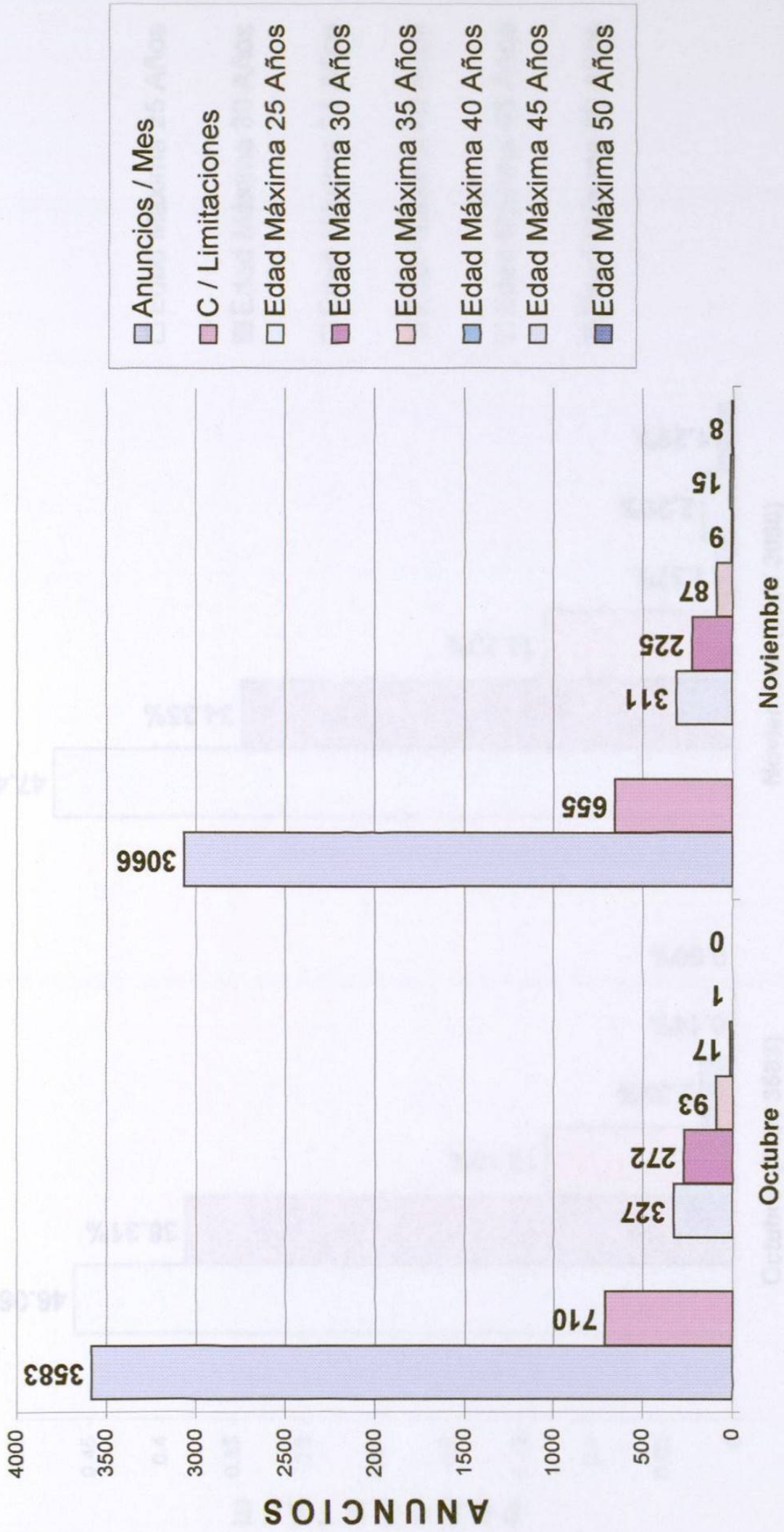
AUXILIARES



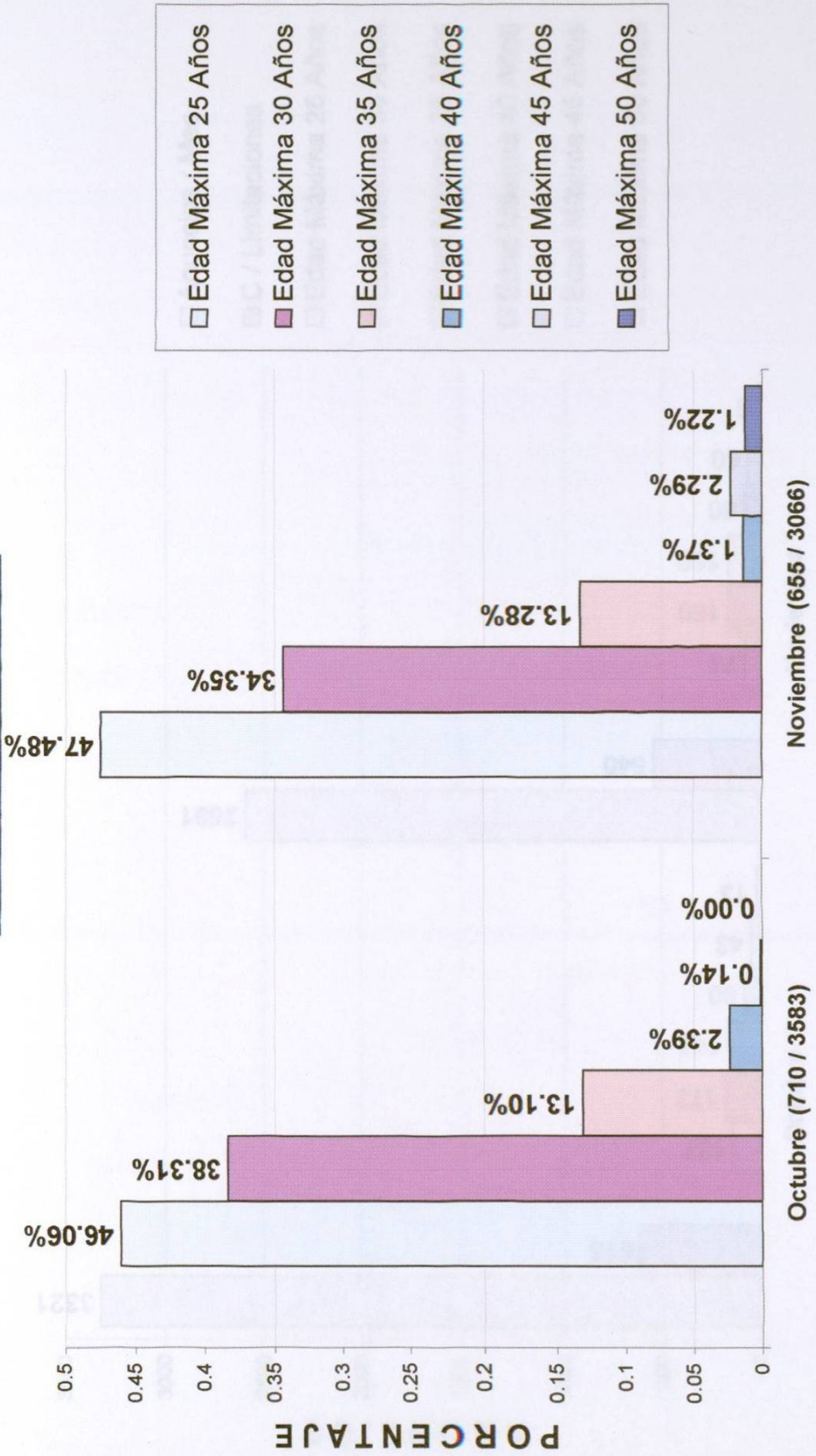
AUXILIARES



SECRETARIAS

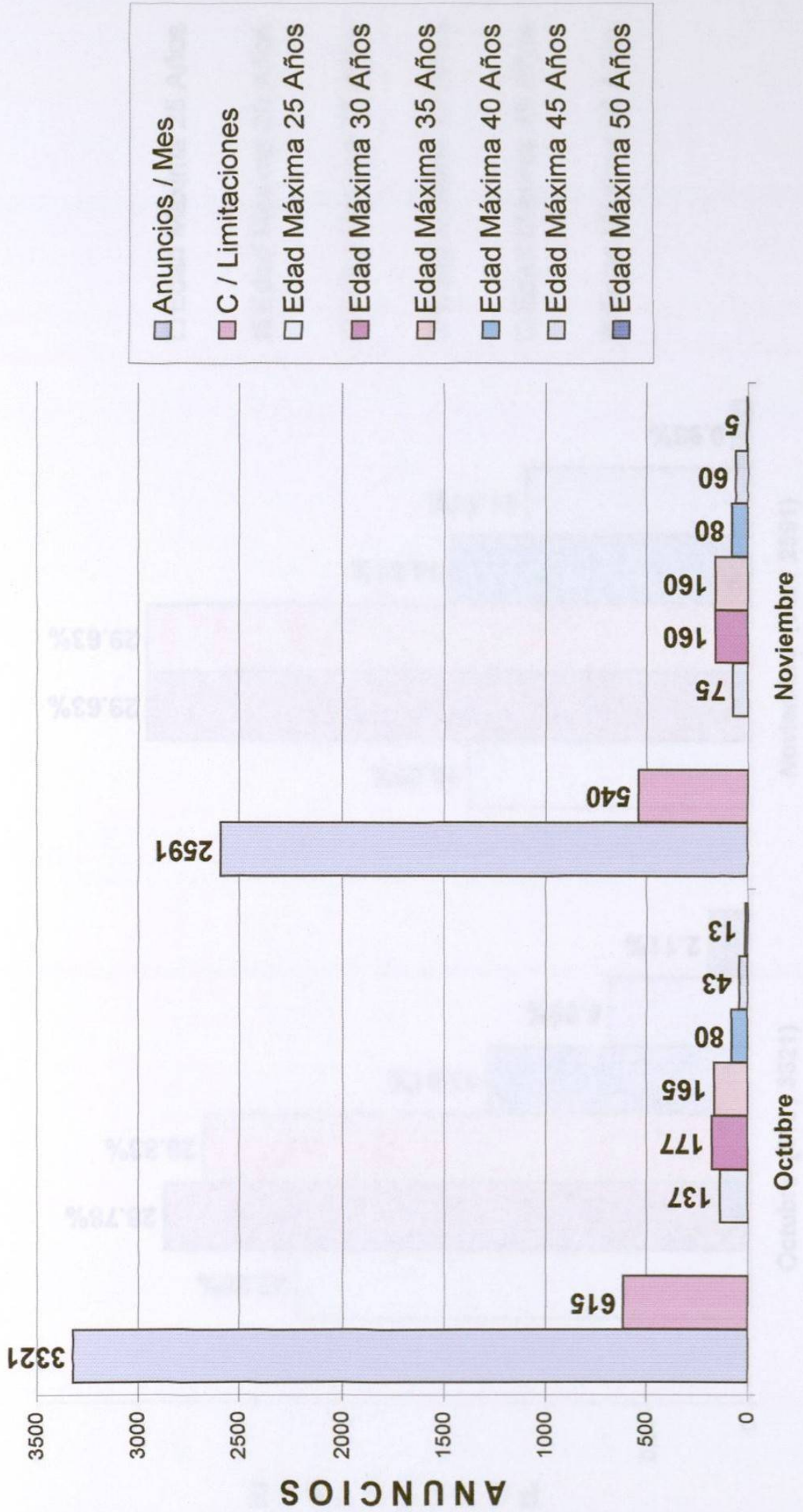


SECRETARIAS

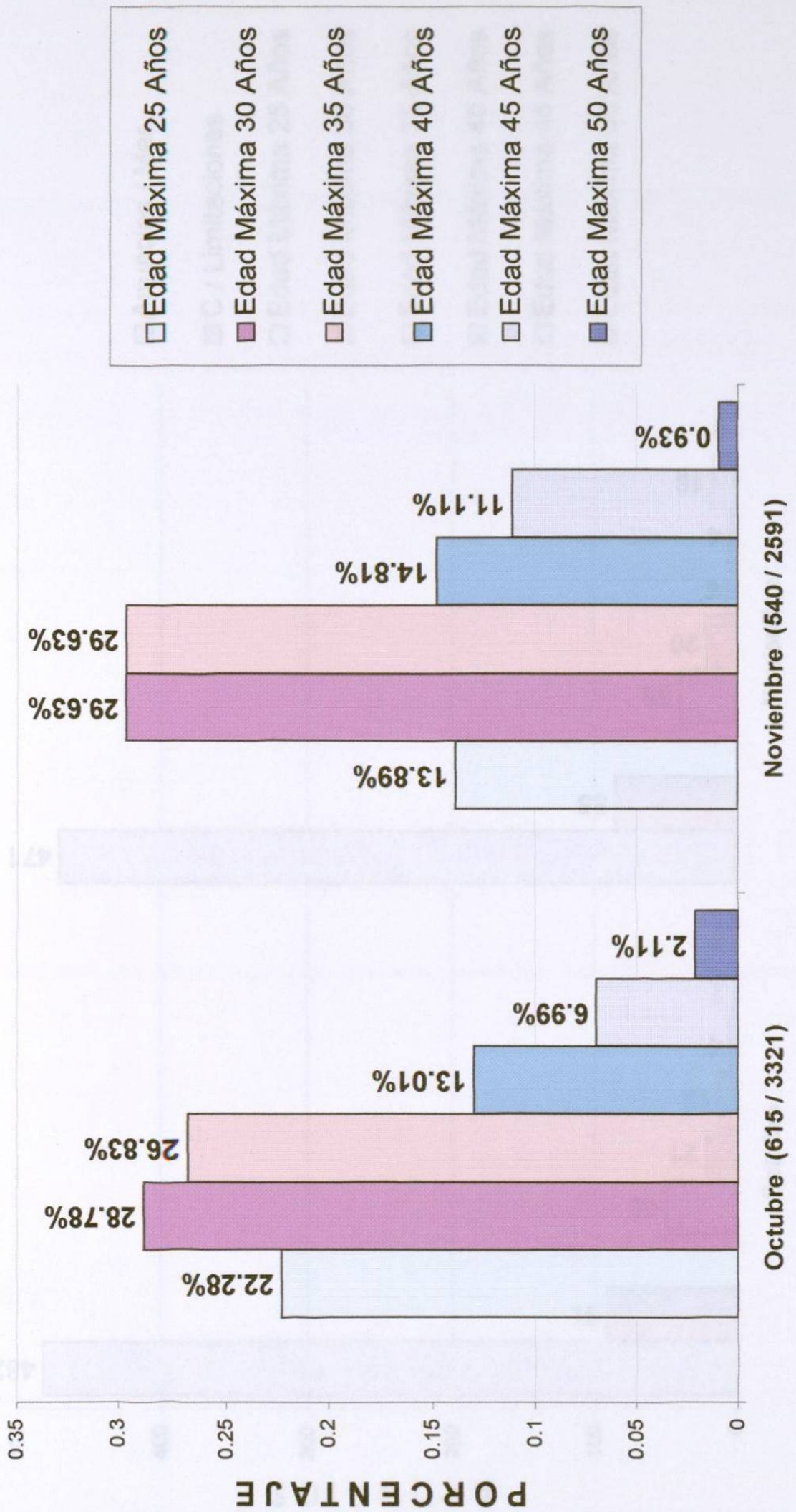


MES

CHOFERES

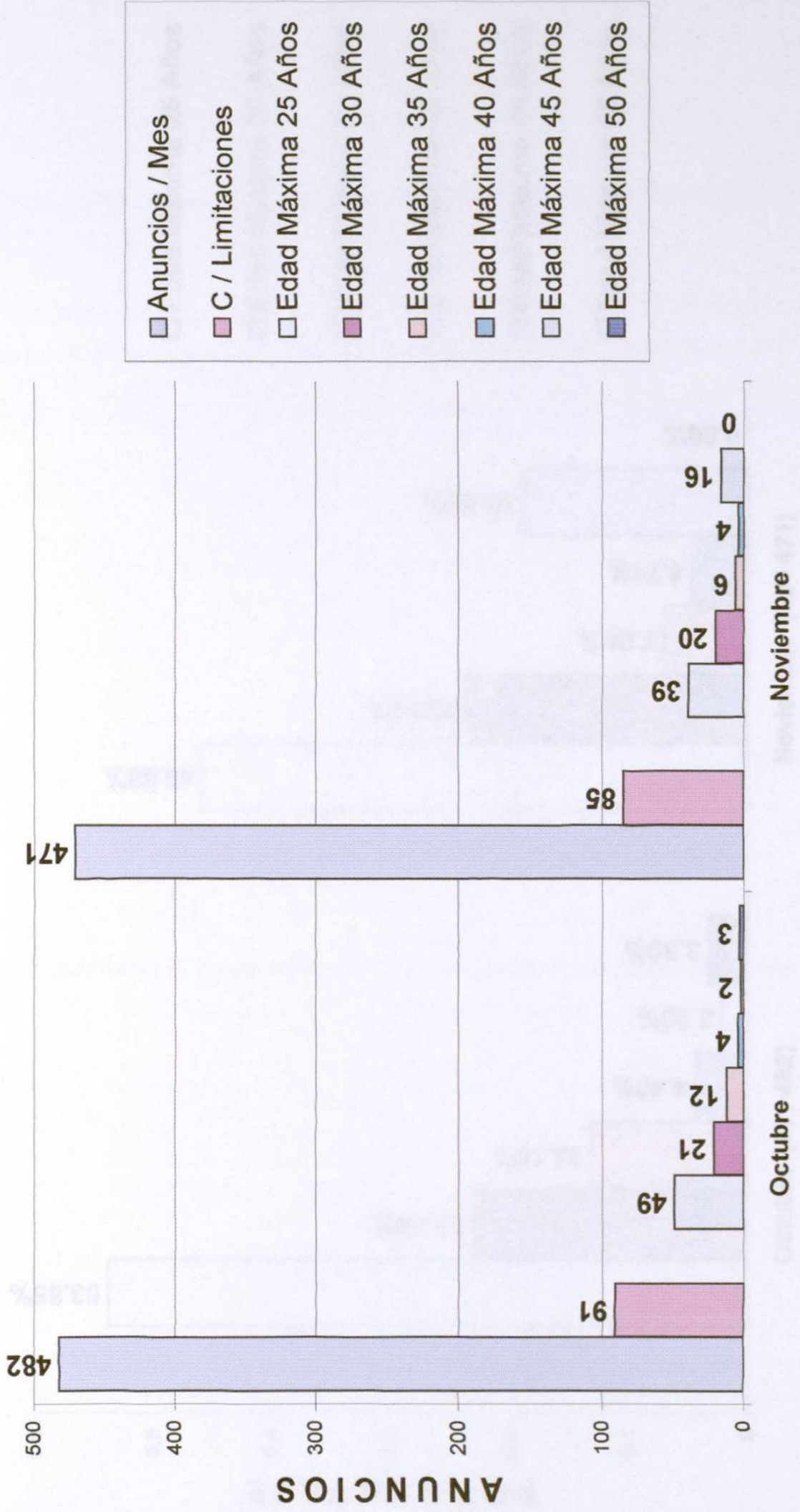


CHOFERES

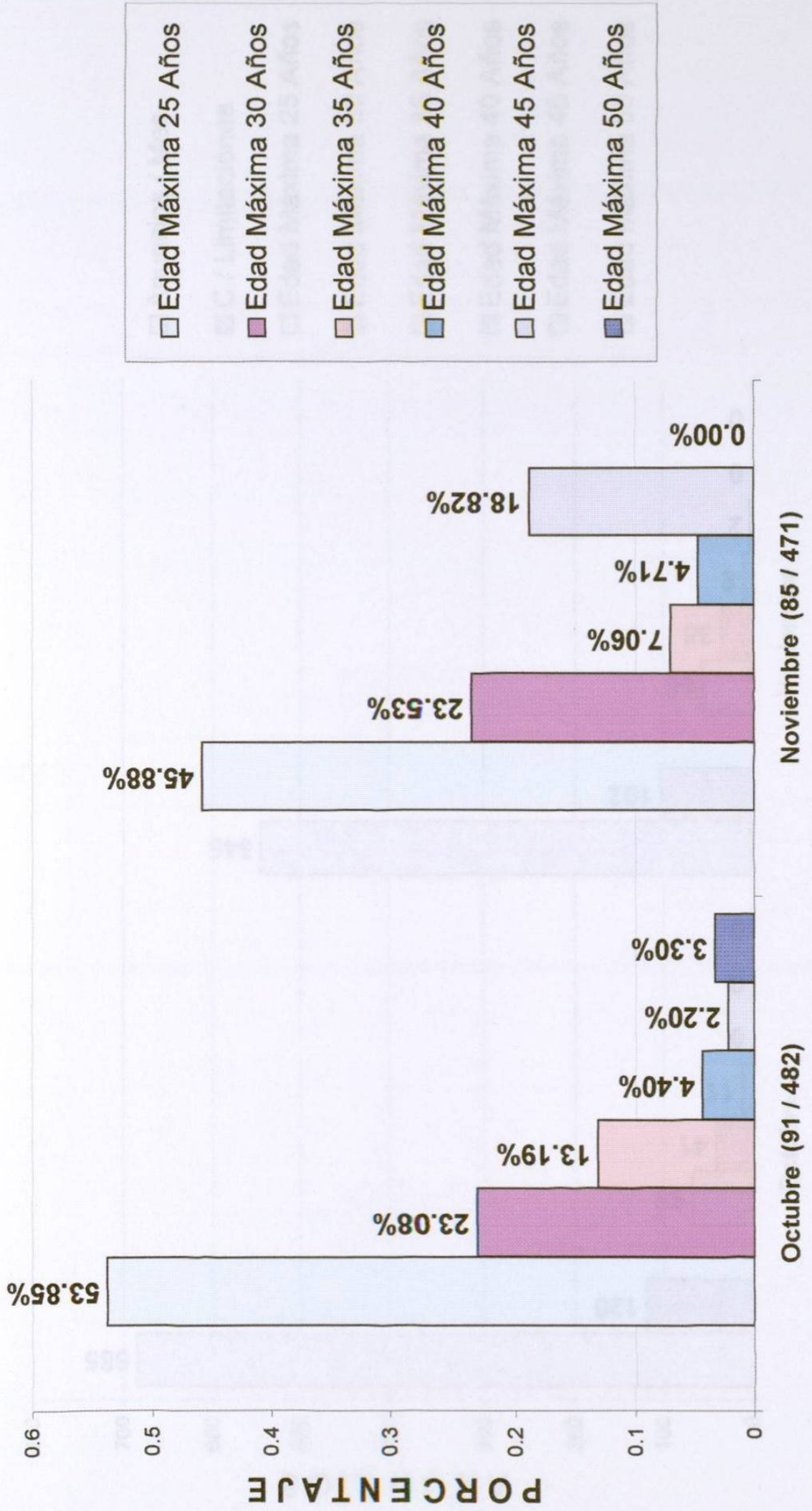


MES

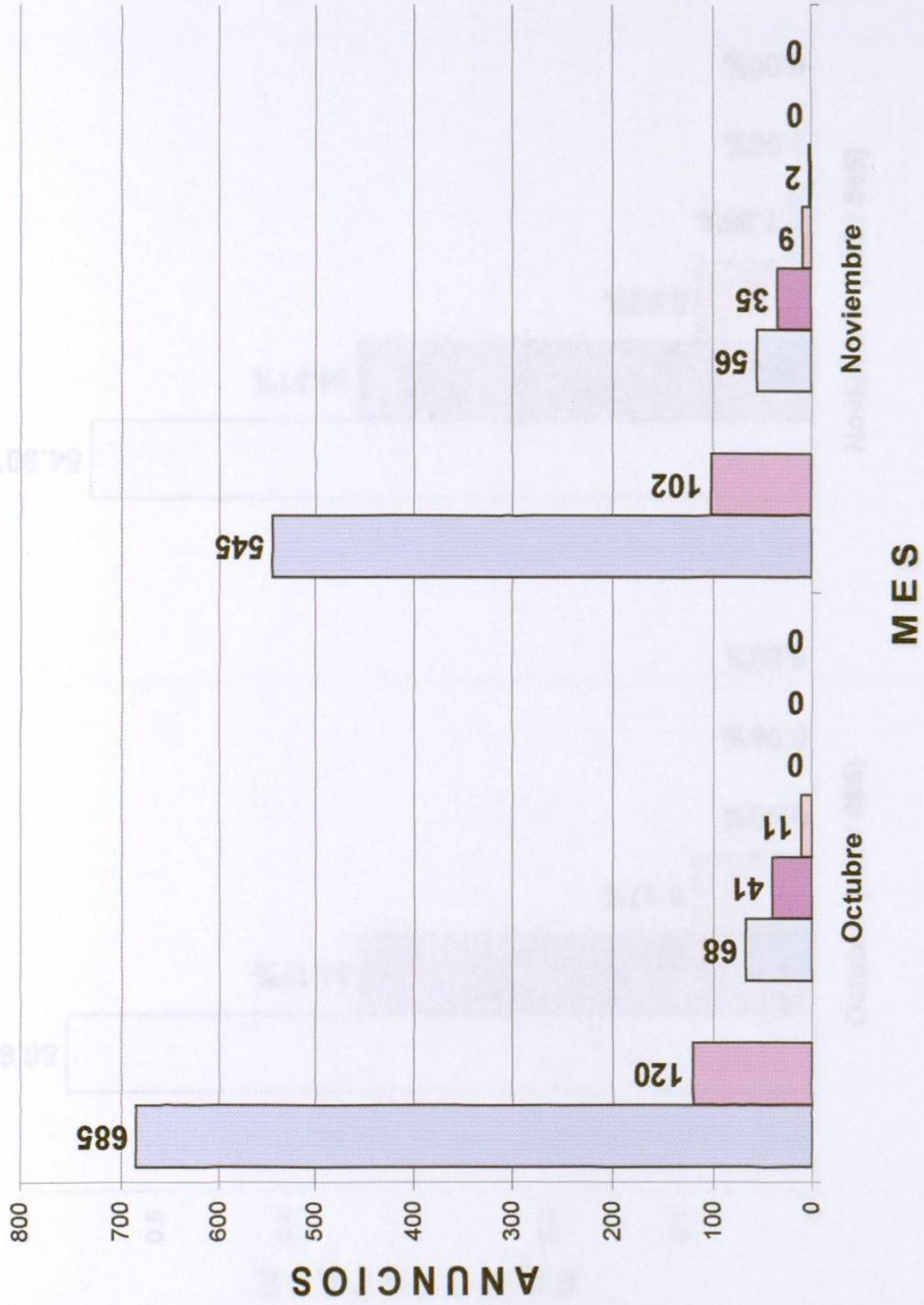
MENSAJEROS



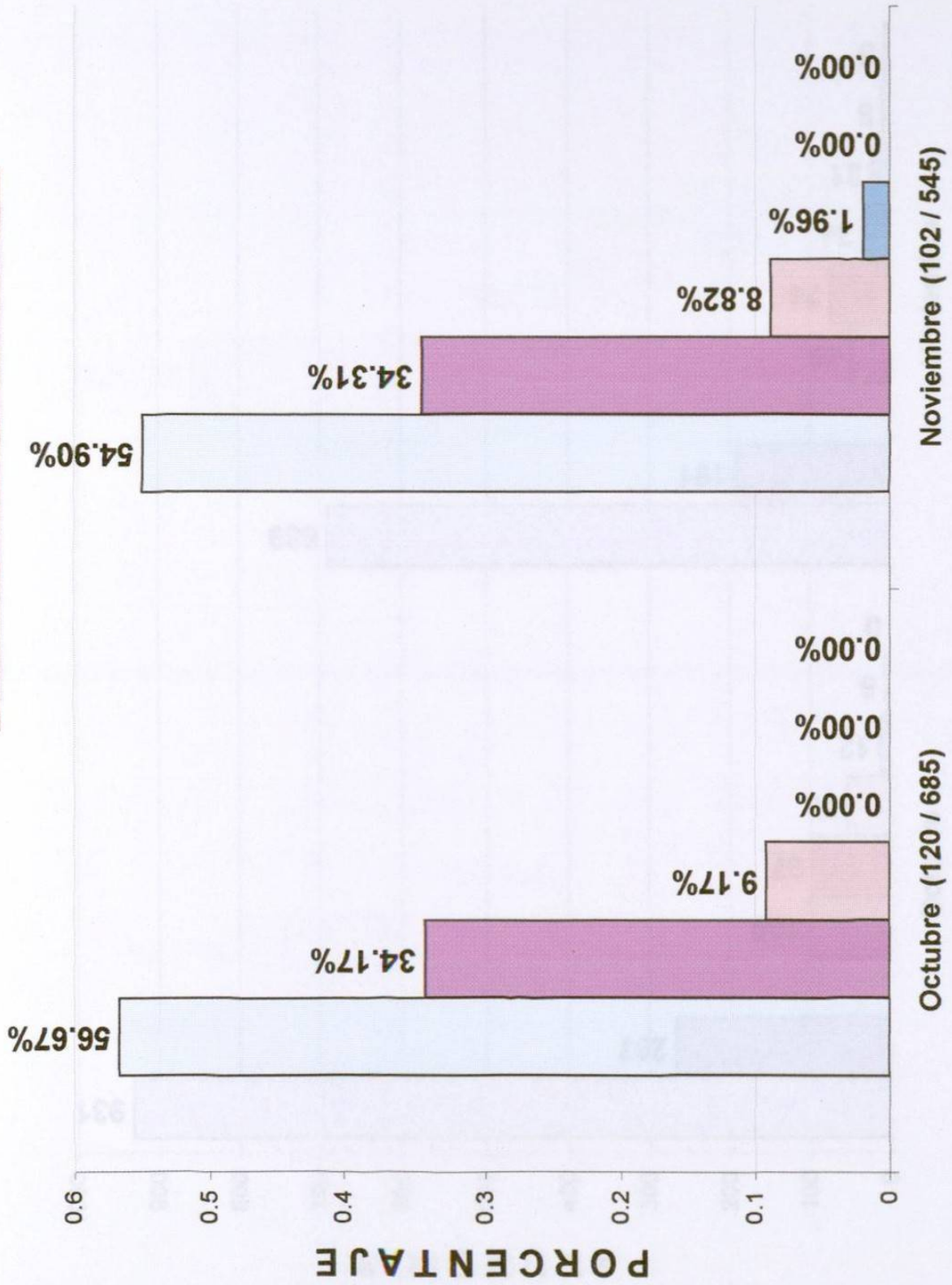
REMENSAJEROS



RECEPCIONISTAS



RECEPCIONISTAS



MES

ALMACENISTAS

